

02-28-14 LETTING ITEM 111

STATE OF ILLINOIS
DEPARTMENT OF TRANSPORTATION
DIVISION OF HIGHWAYS

F.A.U. RTE.	SECTION	COUNTY	TOTAL SHEETS	SHEET NO.
8902	12-00101-SW	MADISON	13	1
FEDERAL AID PROJECT		ILLINOIS	CONTRACT NO. 97547	

INDEX OF SHEETS

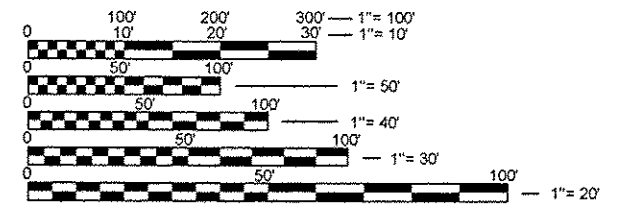
SHEET NO.	ITEM
1	COVER SHEET
2	GENERAL NOTES, UTILITIES, COMMITMENTS
3	SUMMARY OF QUANTITIES & SCHEDULES
4	TYPICAL SECTIONS
5-9	PLAN & PROFILE SHEETS
10-12	TRAFFIC SIGNAL PLANS
13	DETAILS

PLANS FOR PROPOSED DISTRICT DRIVE SIDEWALK

CITY OF EDWARDSVILLE
DISTRICT DRIVE SIDEWALKS AND CROSSWALKS
SECTION 12-00101-00-SW
PROJECT NO. SRTS - 4009 (136)
JOB NO. C-98-336-12

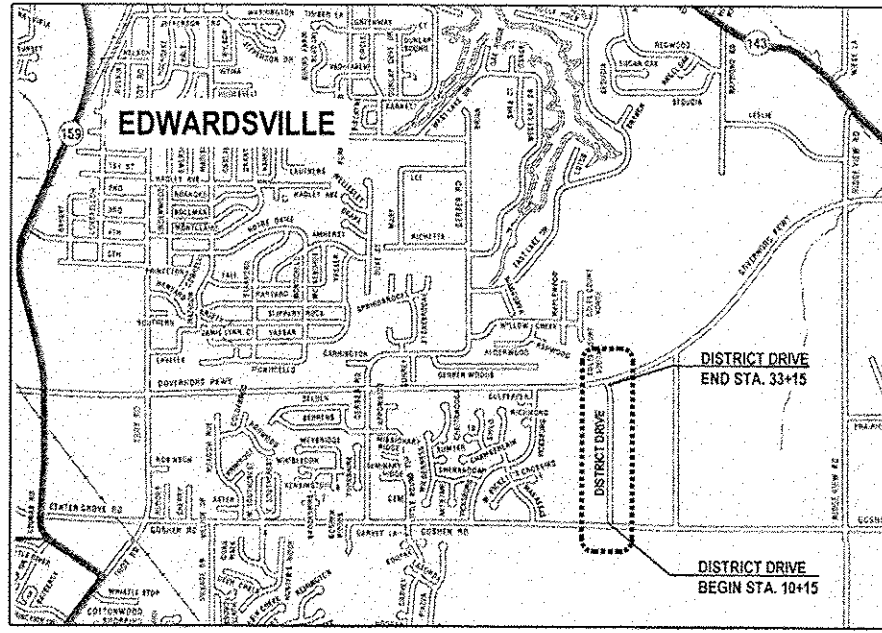
HIGHWAY STANDARDS

SHEET NO.	ITEM
000001-06	STANDARD SYMBOLS, ABBREVIATIONS AND PATTERNS
280001-07	TEMPORARY EROSION CONTROL SYSTEMS
424001-07	PERPENDICULAR CURB RAMPS FOR SIDEWALKS
424011-01	CORNER PARALLEL CURB RAMPS FOR SIDEWALKS
606001-05	CONCRETE CURB TYPE B AND COMBINATION CONCRETE CURB AND GUTTER
701502-06	URBAN LANE CLOSURE, 2L, 2W, WITH BIDIRECTIONAL LEFT TURN LANE
701801-05	LANE CLOSURE MULTILANE 1W OR 2W CROSSWALK OR SIDEWALK CLOSURE
701901-03	TRAFFIC CONTROL DEVICES
720001-01	SIGN PANEL MOUNTING DETAILS
780001-04	TYPICAL PAVEMENT MARKINGS
873001-02	TRAFFIC SIGNAL GROUNDING & BONDING
880006-01	TRAFFIC SIGNAL MOUNTING DETAILS



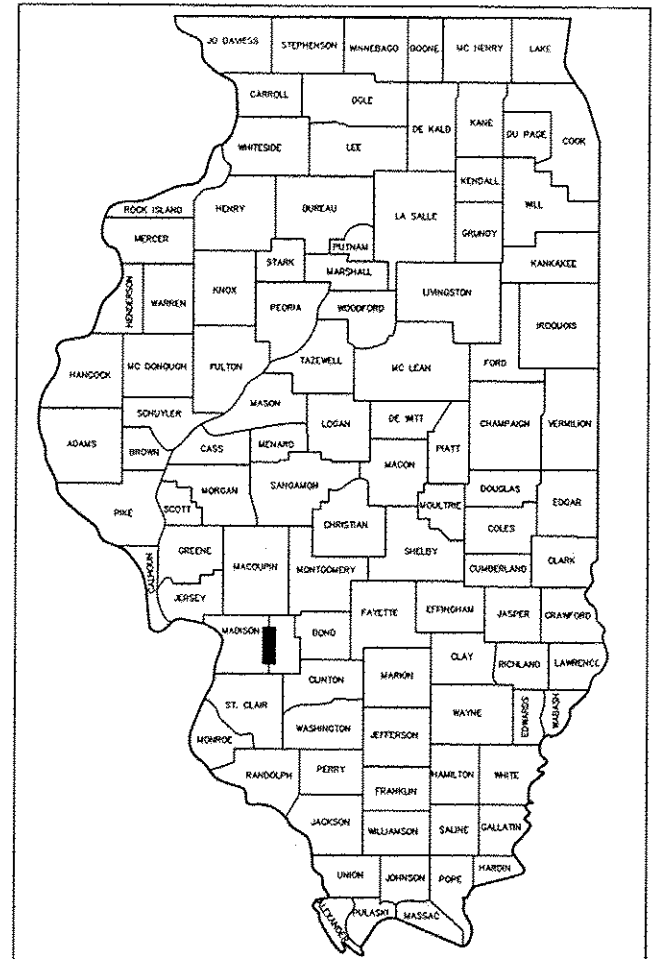
FULL SIZE PLANS HAVE BEEN PREPARED USING STANDARD ENGINEERING SCALES. REDUCED SIZED PLANS WILL NOT CONFORM TO STANDARD SCALES. IN MAKING MEASUREMENTS ON REDUCED PLANS, THE ABOVE SCALES MAY BE USED.

J.U.L.I.E.
JOINT UTILITY LOCATION INFORMATION FOR EXCAVATION
1-800-892-0123
OR 811



LOCATION MAP
NOT TO SCALE

LENGTH OF PROJECT = 2,300 FEET (0.436 MILES)



LOCATION OF SECTION INDICATED THUS: - [black rectangle] -

STATE OF ILLINOIS
DEPARTMENT OF TRANSPORTATION

APPROVED 12/10/2013
[Signature]
Mark Pflanz, Mfgyor

PASSED 12/20/13
[Signature]
District 8 Project Development/Implementation Engineer

RELEASING FOR BID
BASED ON LIMITED
REVIEW 02/20/13
[Signature]
Deputy Director of Highways, Region # 5 Engineer

PRINTED BY THE AUTHORITY
OF THE STATE OF ILLINOIS

DESIGN DESIGNATION

ROADWAY CLASSIFICATION =	LOCAL ROAD
DESIGN SPEED =	30 MPH
CONSTRUCTION YEAR ADT (2013) =	3,000
DESIGN YEAR ADT (2033) =	3,700



[Signature] DATE: 12/9/13

ALAN J. GOEPFERT
IL P.E. NO. 062-052899
EXPIRES 11/30/2015



GENERAL NOTES

1. UNDERGROUND FACILITIES, STRUCTURES AND UTILITIES HAVE BEEN PLOTTED FROM AVAILABLE SURVEYS AND RECORDS. THEIR LOCATIONS MUST BE CONSIDERED TO BE APPROXIMATE ONLY. IT IS POSSIBLE THERE MAY BE OTHERS, THE EXISTENCE OF WHICH IS NOT PRESENTLY KNOWN OR SHOWN. IT IS THE CONTRACTOR'S RESPONSIBILITY TO DETERMINE THEIR EXISTENCE AND EXACT LOCATION AND TO AVOID DAMAGE THERETO. ILLINOIS LAW REQUIRES A MINIMUM OF 48-HOUR NOTICE TO ALL UTILITY COMPANIES BEFORE DIGGING. FIELD LOCATIONS OF UNDERGROUND FACILITIES MAY BE OBTAINED BY CALLING THE J.U.L.I.E. SYSTEM AT 800-892-0123 AND PROVIDING 48 HOURS ADVANCE NOTICE. NON-J.U.L.I.E. MEMBERS MUST BE NOTIFIED INDIVIDUALLY. AGENCIES KNOWN TO HAVE FACILITIES WITHIN THE PROJECT LIMITS ARE LISTED BELOW.
2. ANY FACILITIES OR APPURTENANCES WHICH ARE THE PROPERTY OF ANY PUBLIC UTILITY LOCATED WITHIN THE LIMITS OF CONSTRUCTION SHALL BE RELOCATED OR ADJUSTED BY THEIR RESPECTIVE OWNERS. THE CONTRACTOR SHALL NOTIFY AND COOPERATE WITH THE OWNERS OF ANY SUCH FACILITY IN THEIR REMOVAL AND REARRANGEMENT OPERATIONS IN ORDER THAT THESE OPERATIONS AND THE CONSTRUCTION OF THIS PROJECT MAY PROGRESS IN A REASONABLE MANNER. ALL ROADSIDE OBJECTS (UTILITY POLES, FIRE HYDRANTS, SIGNS, ETC.) SHALL BE RELOCATED TO PROVIDE A MINIMUM OF 1.5 FEET CLEARANCE, MEASURED FROM THE FACE OF CURB TO THE NEAR EDGE OF THE OBJECT.
3. THE FOLLOWING UTILITY COMPANIES MAY HAVE FACILITIES LOCATED WITHIN THE LIMITS OF CONSTRUCTION WHICH MAY REQUIRE ADJUSTMENT, RELOCATION OR REMOVAL. ALL ARE MEMBERS OF J.U.L.I.E., UNLESS NOTED OTHERWISE.

AMEREN (GAS & ELECTRIC)
2600 NORTH CENTER
MARYVILLE, IL 62062
(618) 346-1287

AT&T (TELEPHONE)
203 GOETHE STREET
COLLINSVILLE, IL 62234
(618) 346-6400

CHARTER COMMUNICATIONS (COMMUNICATIONS)
210 WEST DIVISION STREET
MARYVILLE, IL 62062
(618) 345-8121

CITY OF EDWARDSVILLE (WATER & SEWER)
200 EAST PARK STREET
EDWARDSVILLE, IL 62025
(618) 692-7535

SOUTHWESTERN ELECTRIC COOPERATIVE (ELECTRIC)
525 US ROUTE 40
GREENVILLE, IL 62246
(800) 637-8667
4. THE ABOVE INFORMATION REPRESENTS THE BEST INFORMATION AVAILABLE TO THE LOCAL AGENCY AND IS ONLY INCLUDED FOR THE CONVENIENCE OF THE BIDDER. IT IS UNDERSTOOD AND AGREED THAT THE CONTRACTOR HAS TAKEN THE FOREGOING INTO CONSIDERATION IN PREPARING HIS/HER BID, AND NO ADDITIONAL COMPENSATION WILL BE ALLOWED FOR ANY DELAYS OR INCONVENIENCE CAUSED BY SAME.
5. THE CONTRACTOR SHALL VERIFY ALL DIMENSIONS AND CONDITIONS IN THE FIELD PRIOR TO ORDERING MATERIALS AND COMMENCING CONSTRUCTION.
6. THE CONTRACTOR SHALL STAGE ALL WORK IN SUCH A WAY AS TO MAINTAIN INGRESS AND EGRESS TO ALL ABUTTING PROPERTIES AT ALL TIMES DURING CONSTRUCTION. ENTRANCES REQUIRING RECONSTRUCTION MAY BE CLOSED ENTIRELY AT THOSE LOCATIONS TO FACILITATE REMOVAL AND RECONSTRUCTION OPERATIONS. THE COST OF ALL MATERIALS AND LABOR NECESSARY TO COMPLY WITH THIS PROVISION WILL NOT BE PAID FOR SEPARATELY, BUT SHALL BE CONSIDERED AS INCLUDED IN THE UNIT BID PRICES OF THE CONTRACT.
7. THE CONTRACTOR SHALL CONFINE ALL OPERATIONS TO THE CONSTRUCTION LIMITS LINE SHOWN ON THE PLANS. ANY AREA DISTURBED BEYOND THESE LIMITS SHALL BE RESTORED TO ITS ORIGINAL CONDITION AT THE CONTRACTOR'S EXPENSE.
8. THE CONTRACTOR SHALL FERTILIZE, SEED AND MULCH ALL EARTH SURFACES DISTURBED BY CONSTRUCTION. FERTILIZER, SEEDING AND MULCH WITHIN THE CONSTRUCTION LIMITS WILL BE PAID FOR AS PROVIDED IN THE CONTRACT. FERTILIZER, SEEDING AND MULCH OUTSIDE THESE LIMITS WILL NOT BE MEASURED FOR PAYMENT. SEE THE SEEDING SCHEDULE FOR ESTIMATED PLAN QUANTITIES.

9. NEW CURB & GUTTER DIMENSIONS SHALL MATCH EXISTING. AT VARIOUS LOCATIONS, IT MAY BE NECESSARY TO TRANSITION PROPOSED COMBINATION CONCRETE CURB AND GUTTER TO MEET EXISTING CURBS OR GUTTERS. THE MINIMUM LENGTH OF TRANSITIONAL COMBINATION CURB AND GUTTER SHALL BE 10 FEET, UNLESS DIRECTED OTHERWISE BY THE ENGINEER.
10. ALL EXISTING FEATURES THAT INTERFERE WITH THE PROPOSED CONSTRUCTION SHALL BE REMOVED BY THE CONTRACTOR UNLESS NOTED OTHERWISE ON THE PLANS. ALL FEATURES THAT ARE TO BE REMOVED AND FOR WHICH THERE IS NO SPECIFIC PAY ITEM, WILL NOT BE MEASURED SEPARATELY FOR PAYMENT AND THE COST OF THIS REMOVAL WORK SHALL BE CONSIDERED AS INCLUDED IN THE CONTRACT UNIT PRICE FOR EARTH EXCAVATION.
11. ANY EXISTING FEATURES SUCH AS PAVEMENT, CURB AND GUTTER AND SIDEWALK THAT ARE DISTURBED DURING REMOVAL AND REPLACEMENT OPERATIONS THAT ARE NOT SCHEDULED FOR REMOVAL SHALL BE RECONSTRUCTED BY THE CONTRACTOR AT HIS / HER EXPENSE.
12. ALL DRAINAGE STRUCTURES CONSTRUCTED, ADJUSTED OR RECONSTRUCTED UNDER THE CONTRACT, SHALL BE CLEANED OF ANY ACCUMULATION OF SILT, DEBRIS OR FOREIGN MATTER AT THE END OF EACH WORKING DAY AND AT THE TIME OF FINAL INSPECTION. THE COST OF THIS WORK WILL NOT BE PAID FOR SEPARATELY, BUT SHALL BE CONSIDERED AS INCLUDED IN THE CONTRACT UNIT PRICE FOR THE VARIOUS DRAINAGE STRUCTURE ITEMS INCLUDED IN THE CONTRACT.
13. THE PAVEMENT MARKING LOCATIONS SHOWN IN THE PLANS ARE APPROXIMATE. PROPOSED CROSSWALKS SHALL BE ADJUSTED AS DIRECTED BY THE ENGINEER, IF NECESSARY, TO MATCH FIELD CONDITIONS.
14. THE FOLLOWING SYMBOLS, ABBREVIATIONS AND PATTERNS SUPPLEMENT OR SUPERCEDE HIGHWAY STANDARD 000001:

AD	ALGEBRAIC DIFFERENCE IN GRADE
BVCE	BEGINNING OF VERTICAL CURVE ELEVATION
BVCS	BEGINNING OF VERTICAL CURVE STATION
BO	BY OTHERS (USED IN CONJUNCTION WITH TBA & TBR)
CONSTR	CONSTRUCTION
CP	CONTROL POINT
ESMT	EASEMENT
ELEV	ELEVATION
EVCE	END OF VERTICAL CURVE ELEVATION
EVCS	END OF VERTICAL CURVE STATION
FES	FLARED END SECTION
K	LENGTH OF VERTICAL CURVE PER PERCENT GRADE DIFFERENCE
N/F	NOW OR FORMERLY
O/C	OIL AND CHIP
PERM	PERMANENT
PVI	POINT OF VERTICAL INTERSECTION
PVC	POLYVINYL CHLORIDE PIPE
TCE	TEMPORARY CONSTRUCTION EASEMENT
TUP	TEMPORARY USE PERMIT
TBA	TO BE ADJUSTED
TBRL	TO BE RELOCATED
TYP	TYPICAL
W	WIDTH

COMMITMENTS

NONE

STATE OF ILLINOIS
DEPARTMENT OF TRANSPORTATION

GENERAL NOTES, UTILITIES, COMMITMENTS

FILE NAME * 12037 - GENERAL NOTES.DWG	USER NAME * SAM WRIGLEY	DESIGNED -	REVISED -	STATE OF ILLINOIS DEPARTMENT OF TRANSPORTATION	GENERAL NOTES, UTILITIES, COMMITMENTS	F.A.U. RTE.	SECTION	COUNTY	TOTAL SHEETS	SHEET NO.
	PLOT SCALE * 6" = 1'	DRAWN -	REVISED -			8902	12-00101-00-SW	MADISON	13	2
PLOT DATE * 2013-12-09	CHECKED -	REVISED -	CONTRACT NO. 97547							
	DATE - 2013-02-22	REVISED -	SCALE:			SHEET NO. 1 OF 1 SHEETS	STA. _____ TO STA. _____	FED. ROAD DIST. NO.	ILLINOIS	FED. AID PROJECT

SUMMARY OF QUANTITIES

CODE NO.	ITEM	SP	UNIT	ROADWAY	TRAFFIC SIGNAL	TOTAL QUANTITIES
20200100	EARTH EXCAVATION		CU YD	500		500
28000250	TEMPORARY EROSION CONTROL SEEDING		POUND	160		160
42300400	PORTLAND CEMENT CONCRETE DRIVEWAY PAVEMENT, 8 INCH		SQ YD	137		137
42400100	PORTLAND CEMENT CONCRETE SIDEWALK 4 INCH		SQ FT	12,714		12,714
42400800	DETECTABLE WARNINGS		SQ FT	294		294
44000200	DRIVEWAY PAVEMENT REMOVAL		SQ YD	137		137
44000500	COMBINATION CURB AND GUTTER REMOVAL		FOOT	376		376
44000600	SIDEWALK REMOVAL		SQ FT	553		553
60260100	INLETS TO BE ADJUSTED		EACH	14		14
60603800	COMBINATION CONCRETE CURB AND GUTTER, TYPE B-6.12		FOOT	306		306
60605000	COMBINATION CONCRETE CURB AND GUTTER, TYPE B-6.24		FOOT	71		71
67100100	MOBILIZATION		L SUM	1		1
72000100	SIGN PANEL - TYPE 1		SQ FT		3	3
* 78001180	PAINT PAVEMENT MARKING - LINE 24"		FOOT	90		90
* 87301215	ELECTRIC CABLE IN CONDUIT, SIGNAL NO. 14 2C		FOOT		366	366
* 87301225	ELECTRIC CABLE IN CONDUIT, SIGNAL NO. 14 3C		FOOT		366	366
* 88102825	PEDESTRIAN SIGNAL HEAD, POLYCARBONATE, LED, 1-FACE, BRACKET MOUNTED WITH COUNT DOWN TIMER	SP	EACH		2	2
* 88800100	PEDESTRIAN PUSH-BUTTON		EACH		2	2
Z0013798	CONSTRUCTION LAYOUT	SP	L SUM	1		1
X2500900	SEEDING, CLASS 1 (SPECIAL)	SP	ACRE	0.4		0.4
X7010216	TRAFFIC CONTROL AND PROTECTION, (SPECIAL)	SP	L SUM	1		1

* - DENOTES SPECIALTY ITEM
 SP - SEE SPECIAL PROVISIONS

ENTRANCE SCHEDULE

STATION	OFFSET	ENTRANCE TYPE	ENTRANCE WIDTH "W" (FOOT)	ENTRANCE DEPTH "D" (FOOT)	EXISTING SURFACE TYPE	PCC DRIVEWAY PAVT 8 (SQ YD)	DRIVEWAY PAVEMENT REM (SQ YD)
14+26	LEFT	CE	24	17.5	ASPHALT	65	65
16+65	LEFT	CE	28	18	ASPHALT	72	72
TOTAL						137	137

EARTHWORK SCHEDULE

STATION	STATION	EARTH EXCAVATION (CU YD)
10+00	34+00	500
TOTAL		500

SIDEWALK AND CURB & GUTTER SCHEDULE

STATION	STATION	OFFSET	PC CONC SIDEWALK 4 (NOTE 1) (SQ FT)	DETECTABL WARNINGS (NOTE 1) (SQ FT)	COMB CONC GUTTER REM (FOOT)	SIDEWALK REM (SQ FT)	COMB CC&G TB6.12 (FOOT)	COMB CC&G TB6.24 (FOOT)
10+00	11+82	LT	1573	58	120	369	83	38
11+82	14+26	LT	1173	32	35		35	
14+26	16+65	LT	1138	32	38		38	
16+65	18+21	LT	713	36	44	101	44	
18+21	24+10	LT	3190	32	30		30	
24+10	26+92	LT	1517	39	37	83	37	
26+92	33+00	LT	3270	53	72		39	33
33+00	34+00	LT	140	12				
TOTAL			12,714	294	376	553	306	71

SIDEWALK NOTES:

- SIDEWALK RAMPS ACCESSIBLE TO THE DISABLED ARE REQUIRED. SEE PLAN SHEETS FOR LOCATIONS AND TYPES. SEE HIGHWAY STANDARDS 424001 & 424011 FOR SIDEWALK RAMP DETAILS.

SEEDING SCHEDULE

STATION	STATION	TEMP EROS CONTR SEED (NOTE1) (POUND)	SEEDING CL 1 SPL (ACRE)	NITROGEN FERT NUTR (NOTE2) (POUND)	PHOSPHORU FERT NUTR (NOTE2) (POUND)	POTASSIUM FERT NUTR (NOTE2) (POUND)	MULCH METHOD 2 (NOTE2) (TON)
10+00	11+82	12	0.03	2.7	2.7	2.7	0.06
11+82	14+26	12	0.03	2.7	2.7	2.7	0.06
14+26	16+65	12	0.03	2.7	2.7	2.7	0.06
16+65	18+21	12	0.02	1.8	1.8	1.8	0.04
18+21	24+10	36	0.10	9.0	9.0	9.0	0.20
24+10	26+92	16	0.04	3.6	3.6	3.6	0.08
26+92	33+00	48	0.13	11.7	11.7	11.7	0.26
33+00	34+00	12	0.02	1.8	1.8	1.8	0.04
TOTAL		160	0.4	36	36	36	0.8

SEEDING NOTES:

- TEMPORARY EROSION CONTROL SEEDING QUANTITY ASSUMES TWO SEPARATE APPLICATIONS AT A RATE OF 100 LBS/ACRE/APPLICATION.
- FERTILIZER AND MULCH QUANTITIES ARE SHOWN FOR INFORMATION ONLY. THE COST FOR FERTILIZER NUTRIENTS AND MULCH SHALL BE INCLUDED IN THE CONTRACT UNIT PRICE FOR SEEDING, CLASS 1 (SPECIAL).

FILE NAME = 12037 - SUMMARY OF QUANTITIES & SCHEDULES.DWG

USER NAME = SAM WRIGLEY
 PLOT SCALE = 6" = 1'
 PLOT DATE = 2013-12-09

DESIGNED -
 DRAWN -
 CHECKED -
 DATE = 2013-02-22

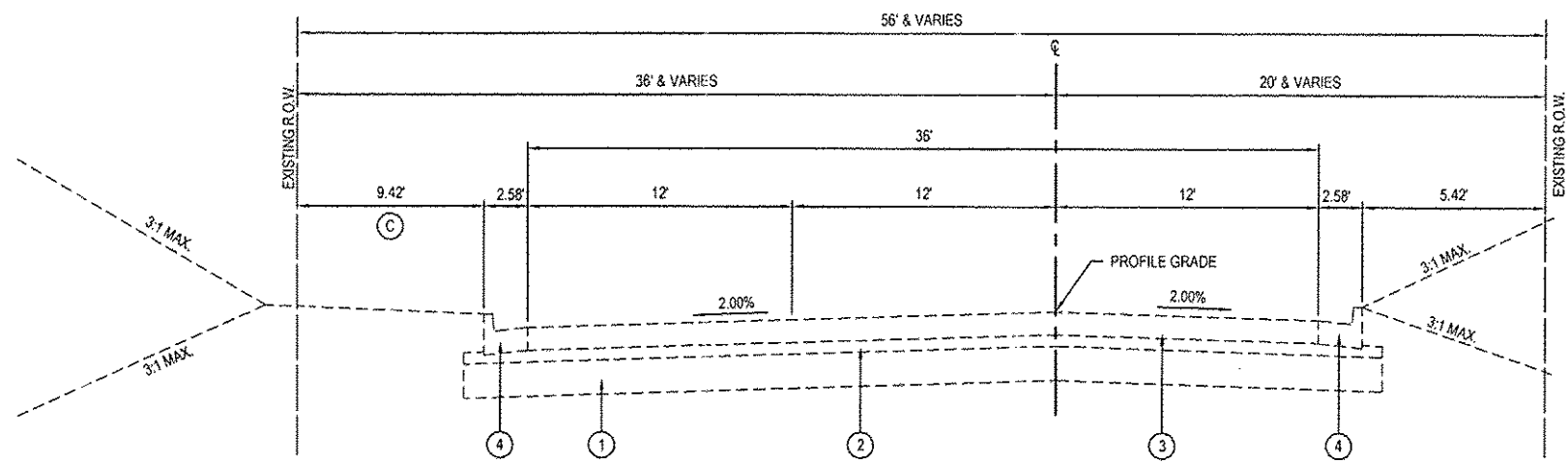
REVISED -
 REVISED -
 REVISED -
 REVISED -

STATE OF ILLINOIS
 DEPARTMENT OF TRANSPORTATION

SUMMARY OF QUANTITIES & SCHEDULES

SCALE: SHEET NO. 1 OF 1 SHEETS STA. TO STA.

F.A.U. RTE	SECTION	COUNTY	TOTAL SHEETS	SHEET NO.
8902	12-00101-00-SW	MADISON	13	3
FED. ROAD DIST. NO. ILLINOIS FED. AID PROJECT			CONTRACT NO. 97547	



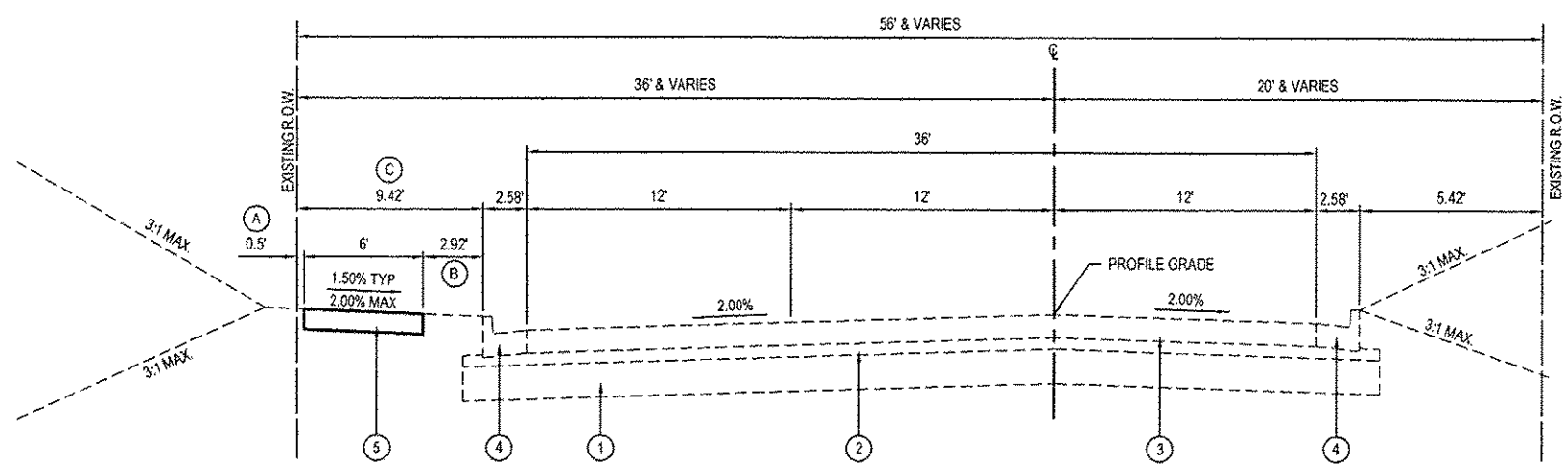
EXISTING TYPICAL SECTION DISTRICT DRIVE

STA. 10+15.00 TO STA. 33+19.50
(NOT TO SCALE)

- (A) VARIES FROM 0.5' TO 77.58'
FROM STA 10+45 TO STA 11+50
FROM STA 30+03 TO STA 31+75
 - (B) VARIES FROM 0' TO 2.92'
FROM STA 10+23 TO STA 11+50
FROM STA 32+17 TO STA 33+03
 - (C) VARIES FROM 9.42 TO 86.49'
FROM STA 10+45 TO STA 11+50
FROM STA 30+03 TO STA 31+75
- SEE PLANS FOR LOCATIONS

LEGEND

- (1) EXISTING LIME MODIFIED SOIL, 12"
- (2) EXISTING SUB-BASE GRANULAR MATERIAL, TYPE A, 4"
- (3) EXISTING PCC PAVEMENT, 8" (JOINTED), TYPE A FINAL FINISH
- (4) EXISTING COMBINATION CONCRETE CURB & GUTTER, TYPE B-6.24
- (5) PROPOSED PCC SIDEWALK, 4"



PROPOSED TYPICAL SECTION DISTRICT DRIVE

STA. 10+15.00 TO STA. 33+19.50
(NOT TO SCALE)

FILE NAME	12037 - TYPICAL SECTIONS.DWG
USER NAME	SAM WRIGLEY
PLOT SCALE	6" = 1'
PLOT DATE	2013-12-09

DESIGNED	-	REVISED	-
DRAWN	-	REVISED	-
CHECKED	-	REVISED	-
DATE	2012-12-03	REVISED	-

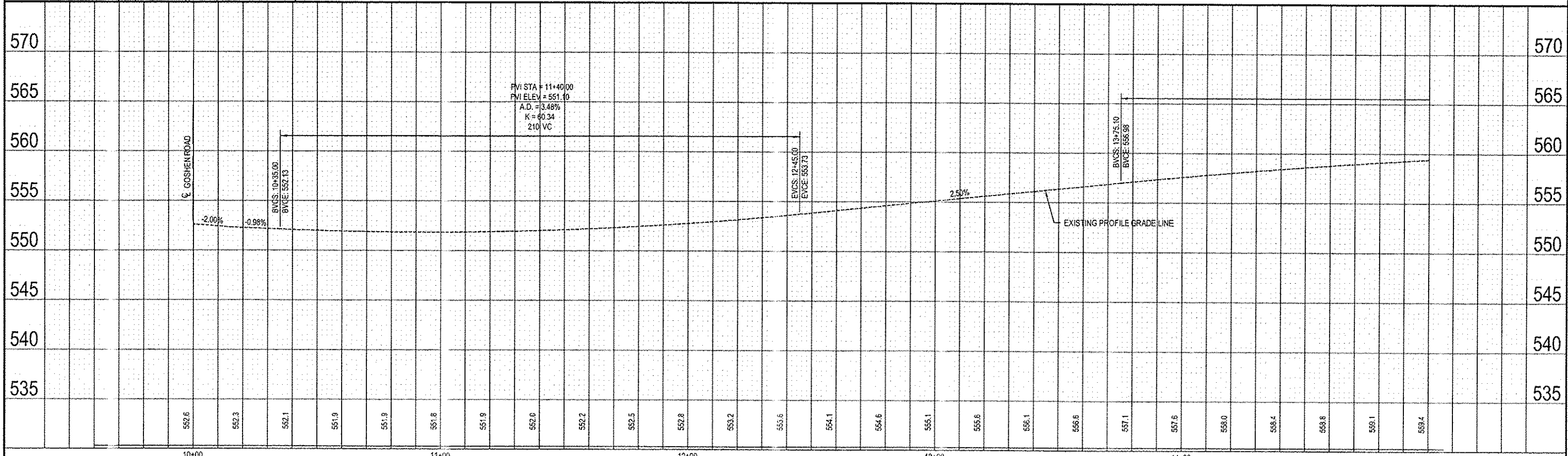
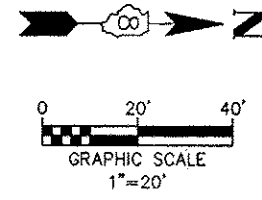
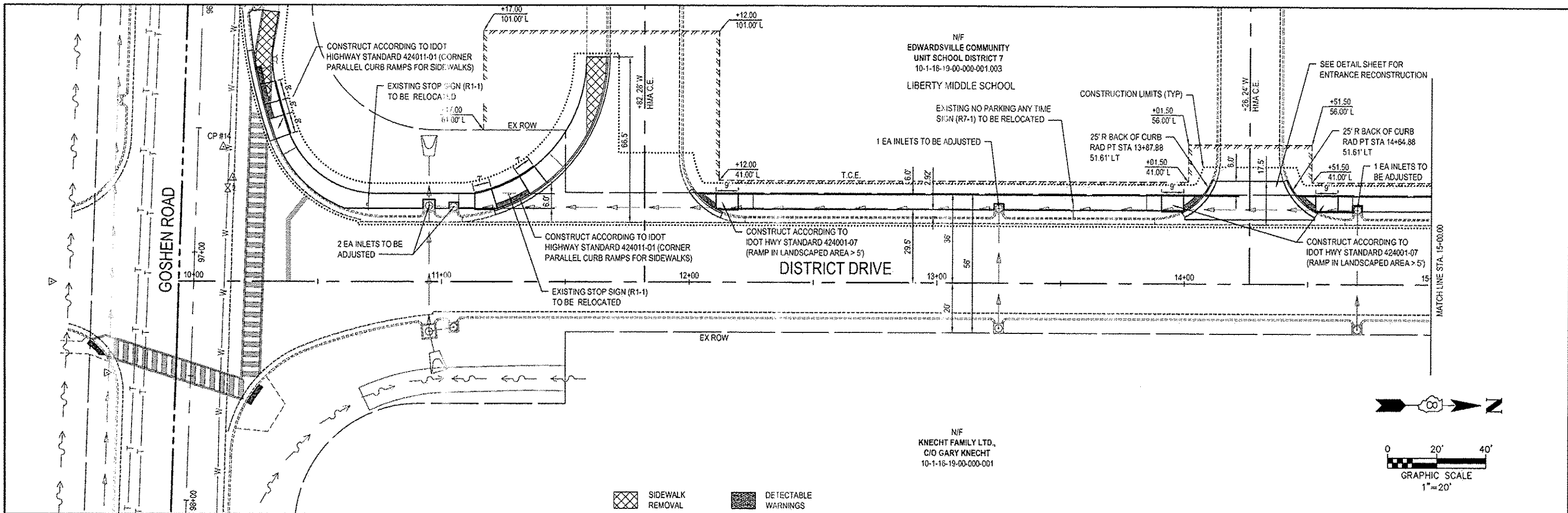
STATE OF ILLINOIS
DEPARTMENT OF TRANSPORTATION

TYPICAL SECTIONS	
SCALE:	SHEET NO. 1 OF 1 SHEETS
STA.	TO STA.

F.A.U. RTE.	SECTION	COUNTY	TOTAL SHEETS	SHEET NO.
0902	12-00101-00-SW	MADISON	13	4
CONTRACT NO. 97547				
FED. ROAD DIST. NO. ILLINOIS FED. AID PROJECT				

DATE	BY
DESIGNED	PLOTTED
CHECKED	NOTED
APPROVED	DATE
PROJECT NO.	DATE

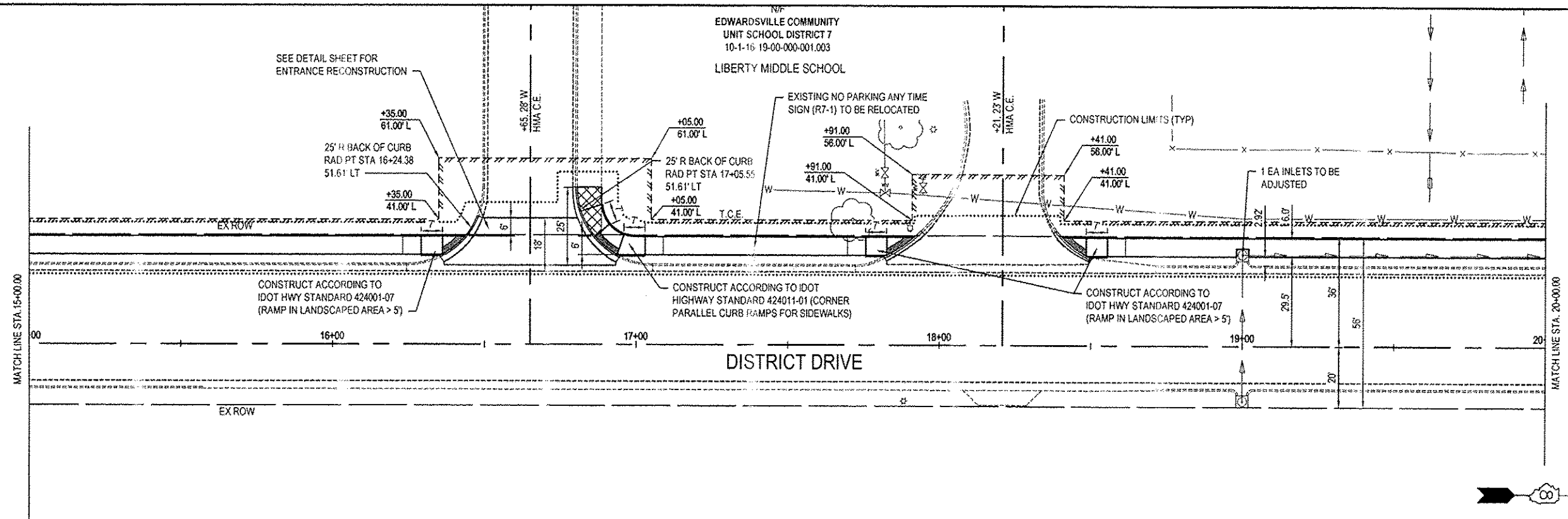
DATE	BY
DESIGNED	PLOTTED
CHECKED	NOTED
APPROVED	DATE
PROJECT NO.	DATE



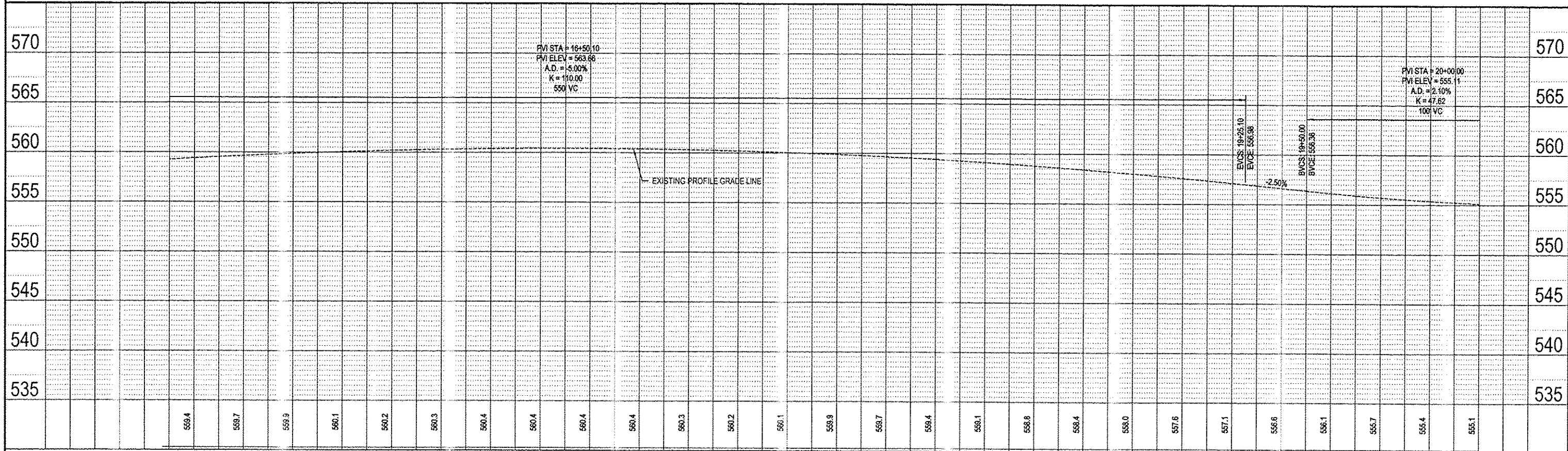
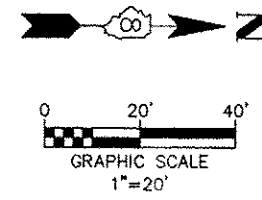
FILE NAME = 12037 - DESIGN DWG	USER NAME = SAM WRICLEY	DESIGNED -	REVISED -	STATE OF ILLINOIS DEPARTMENT OF TRANSPORTATION	PLAN & PROFILE SHEET	F.A.U. RTE.	SECTION	COUNTY	TOTAL SHEETS	SHEET NO.	
PLOT SCALE = 6" = 1'	CHECKED -	REVISED -	REVISED -			8902	12-00101-00-SW	MADISON	13	9	
PLOT DATE = 2013-12-09	DATE = 2012-11-28	REVISED -	REVISED -			CONTRACT NO. 07547					
						FED. ROAD DIST. NO.	ILLINOIS	FED. AID PROJ. FCT			

DATE	
BY	
DESIGNED	
CHECKED	
PLANNED	
NOTED	
NO.	

DATE	
BY	
DESIGNED	
CHECKED	
PLANNED	
NOTED	
NO.	



SIDEWALK REMOVAL
 DETECTABLE WARNINGS



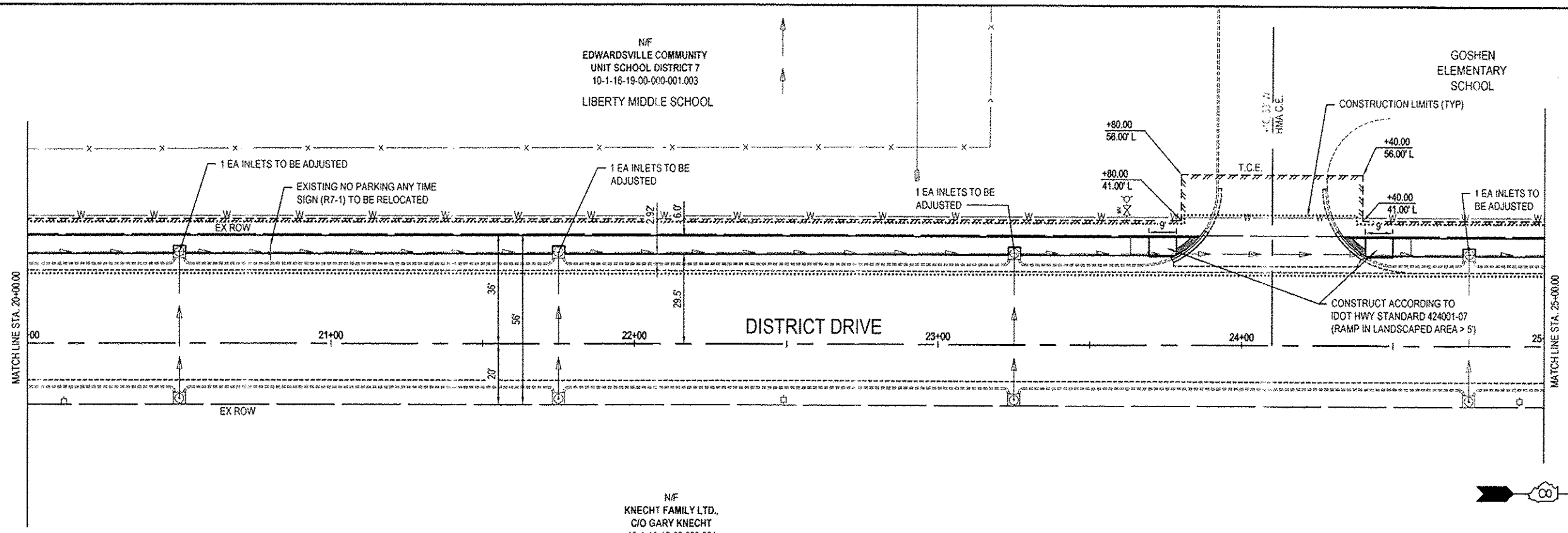
FILE NAME	*12037 - DESIGN.DWG	USER NAME	SAM WRIGLEY	DESIGNED	-	REVISD	-	STATE OF ILLINOIS DEPARTMENT OF TRANSPORTATION		PLAN & PROFILE SHEET		F.A.U. RTE.	SECTION	COUNTY	TOTAL SHEETS	SHEET NO.
PLOT SCALE	6" = 1'	CHECKED	-	REVISD	-	8902	12-00101-00-SW					MADISON	13	6		
PLOT DATE	2013-12-09	DATE	2012-11-28	REVISD	-	CONTRACT NO. 97547										
							ILLINOIS FED. AID PROJECT									

DATE	
BY	
REVISIONS	
PLANNED	
ALIGNED	
CHECKED	
DESIGNED	
NO.	
PLAN	
NOTE BOOK	
NO.	

DATE	
BY	
REVISIONS	
PLANNED	
ALIGNED	
CHECKED	
DESIGNED	
NO.	
PROFILE	
NOTE BOOK	
NO.	

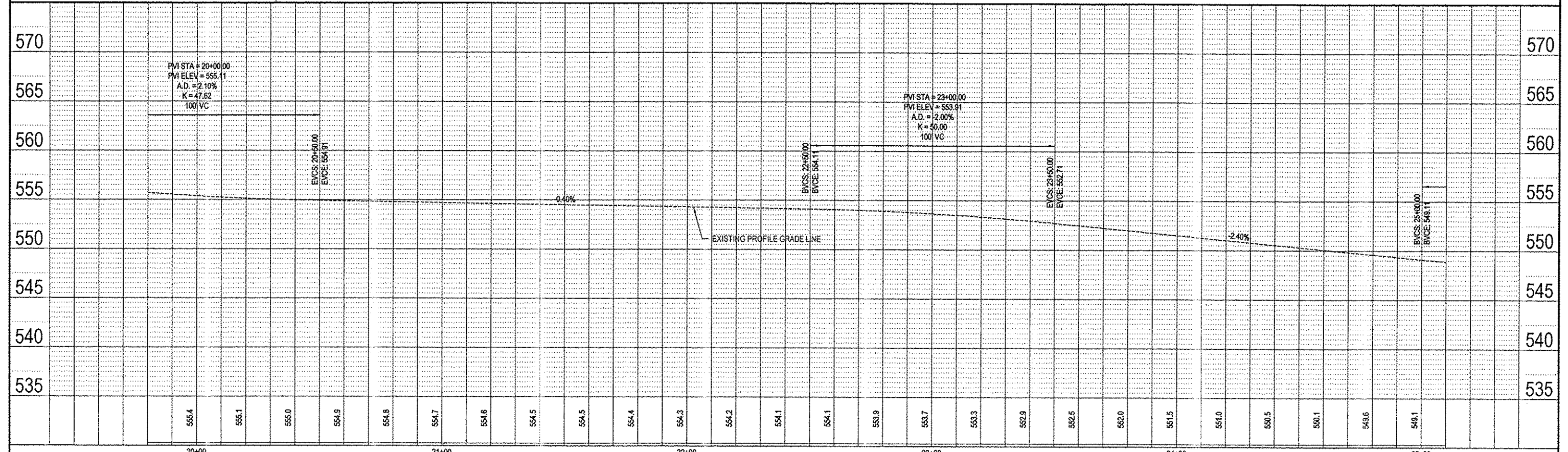
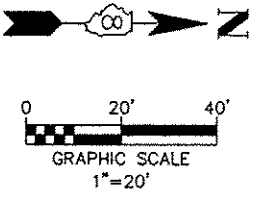
N/F
EDWARDSVILLE COMMUNITY
UNIT SCHOOL DISTRICT 7
10-1-16-19-00-000-001.003
LIBERTY MIDDLE SCHOOL

GOSHEN
ELEMENTARY
SCHOOL



N/F
KNECHT FAMILY LTD.,
C/O GARY KNECHT
10-1-16-19-00-000-001

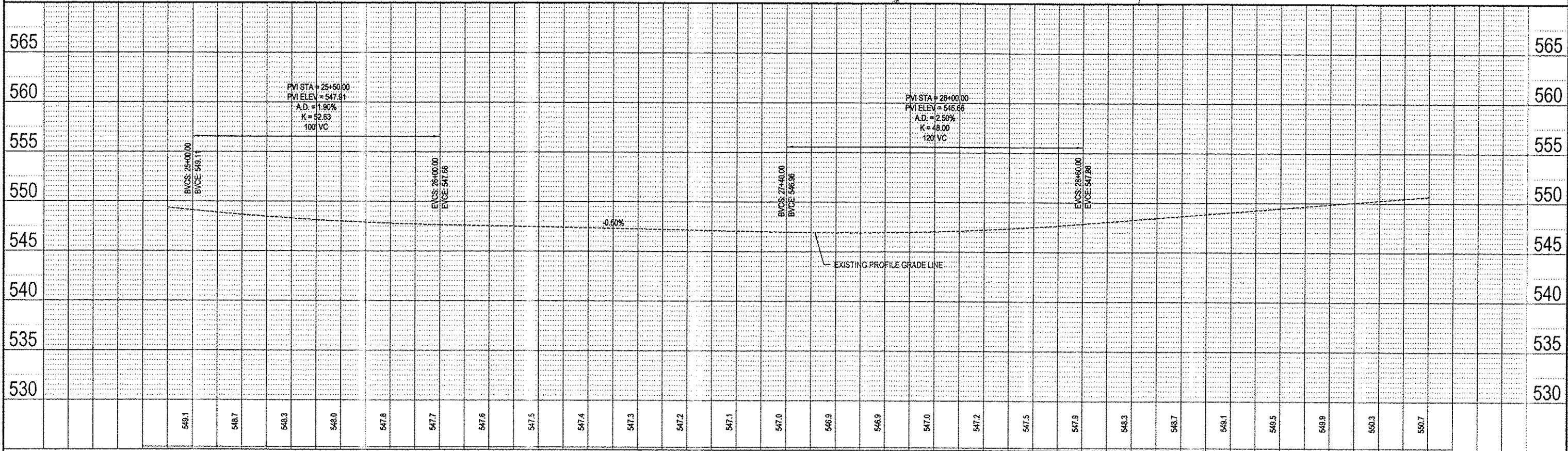
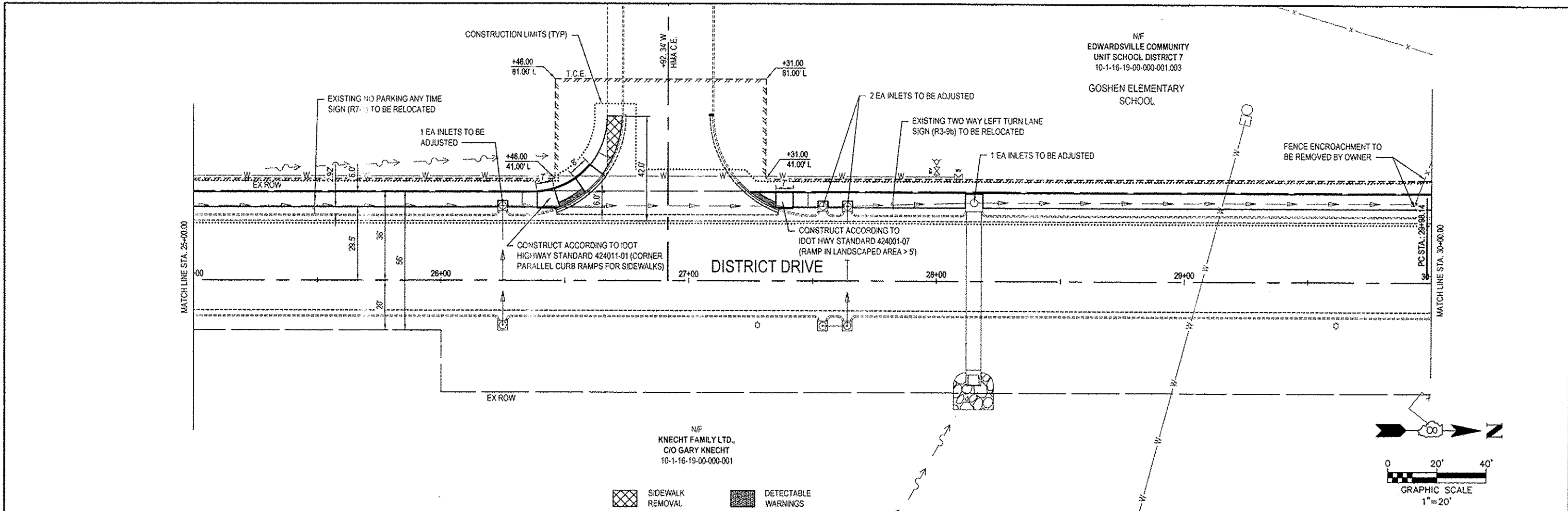
SIDEWALK REMOVAL
 DETECTABLE WARNINGS



FILE NAME = 12037 - DESIGN.DWG	USER NAME = SAM WRIGLEY	DESIGNED -	REVISD -	STATE OF ILLINOIS DEPARTMENT OF TRANSPORTATION	PLAN & PROFILE SHEET	F.A.U. RTE. = 8902	SECTION = 12-00101-00-SW	COUNTY = MADISON	TOTAL SHEETS = 13	SHEET NO. = 7
PLOT SCALE = 6" = 1'	CHECKED -	REVISD -	REVISD -			CONTRACT NO. 97547				
PLOT DATE = 2013-12-09	DATE = 2012-11-28	REVISD -	REVISD -			FED. ROAD DIST. NO. ILLINOIS FED. AID PROJECT				

DATE	
BY	
REVISIONS	
PLANNED	
ALIGNED/CHECKED	
NOTE BOOK	
NO.	
DATE	
BY	
REVISIONS	
PLANNED	
ALIGNED/CHECKED	
NOTE BOOK	
NO.	

DATE	
BY	
REVISIONS	
PLANNED	
GRADES CHECKED	
STRUCTURE NOTATIONS	
NOTE BOOK	
NO.	
DATE	
BY	
REVISIONS	
PLANNED	
GRADES CHECKED	
STRUCTURE NOTATIONS	
NOTE BOOK	
NO.	



FILE NAME	#12037 - DESIGN.DWG	USER NAME	SAM WRIGLEY	DESIGNED		REVISED		STATE OF ILLINOIS DEPARTMENT OF TRANSPORTATION	PLAN & PROFILE SHEET	F.A.U. RTE.	8902	SECTION	12-00101-00-SW	COUNTY	MADISON	TOTAL SHEETS	13	SHEET NO.	8
PLOT SCALE	6" = 1'	CHECKED		REVISED		SCALE:	1" = 20'			SHEET NO. 4 OF 5 SHEETS	STA. 25+00 TO STA. 30+00	CONTRACT NO. 97547							
PLOT DATE	2013-12-09	DATE	2012-11-28	REVISED		FED. ROAD DIST. NO.				ILLINOIS FED AID PROJECT									

ELECTRICAL GENERAL NOTES

ALL SIGNAL HEADS SHALL BE BLACK POLYCARBONATE. PUSH BUTTON HOUSING AND MOUNTING HARDWARE SHALL BE PAINTED BLACK. ALL BOLTS, SCREWS, NUTS AND WASHERS SHALL BE STAINLESS STEEL. ANTI-SIEZE PASTE COMPOUND SHALL BE USED ON ALL MOUNTING HARDWARE FIELD CONNECTIONS.

COUNT DOWN TIMERS ARE REQUIRED.

ALL TRAFFIC SIGNAL CABLE SHALL BE #14 AWG STRANDED COPPER UNLESS OTHERWISE SPECIFIED. THERE SHALL BE FOUR (4) GROUND RODS IN THE CONTROLLER CABINET. GROUND WIRES SHALL BE #6 AWG STRANDED, BARE COPPER.

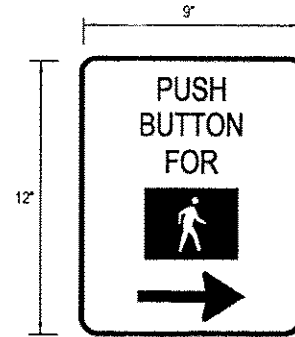
ALL UTILITIES SHALL BE LOCATED IN THE FIELD PRIOR TO ANY ATTEMPT TO CONSTRUCT ANY COMPONENT OF THE VARIOUS TRAFFIC SIGNAL INSTALLATIONS. AGENCIES KNOWN TO HAVE FACILITIES WITHIN THE LIMITS OF THIS IMPROVEMENT ARE THE FOLLOWING:

- ILLINOIS POWER COMPANY (GAS & ELECTRIC)
- AT&T (TELEPHONE)
- CHARTER COMMUNICATIONS (CABLE TV)
- CITY OF EDWARDSVILLE (WATER, SEWER & TRAFFIC SIGNALS)
- SOUTHWESTERN ELECTRIC COOPERATIVE (ELECTRIC)

THE LOCATION OF EXISTING UTILITIES AS SHOWN ON THE PLANS HAVE BEEN LOCATED AT THE TIME OF SURVEY, OR BASED ON AVAILABLE EXISTING INFORMATION. NO GUARANTEE IS IMPLIED THAT ALL UTILITIES HAVE BEEN LOCATED OR DEPICTED ON THE PLANS. THE CONTRACTOR SHALL BE RESPONSIBLE FOR VERIFYING THE EXACT LOCATION OF ALL UTILITIES. IT MAY BE NECESSARY TO HAND DIG TEST HOLES TO EXPOSE EXISTING UTILITIES AT SOME LOCATIONS.

SEE "JOINT UTILITY LOCATION INFORMATION FOR EXCAVATORS" (JULIE) IN THE SPECIAL PROVISIONS. CALL (800) 892-0123 ONE WEEK BEFORE PLANNING TO DIG.

PUSH BUTTONS SHALL BE MOUNTED 30" ABOVE SURFACE OF SIDEWALK AND AT A RIGHT ANGLE TO THE CROSSWALK.

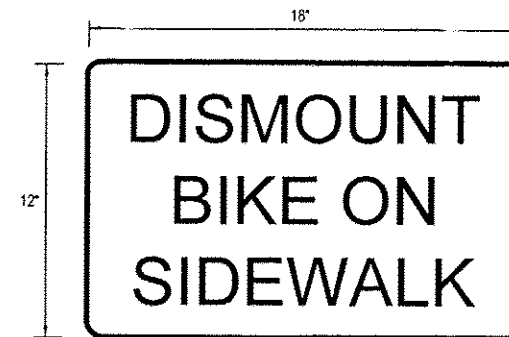


FURNISH & INSTALL TWO (2) EACH SIGNS
R10-4b

LOCATE PEDESTRIAN PUSH BUTTON AT
RIGHT ANGLE TO CROSS WALK

DETAIL OF
SIGN PANEL - TYPE 1
(NOT TO SCALE)

STA 186+46, 44.8' RT
STA 186+50, 55.3' RT



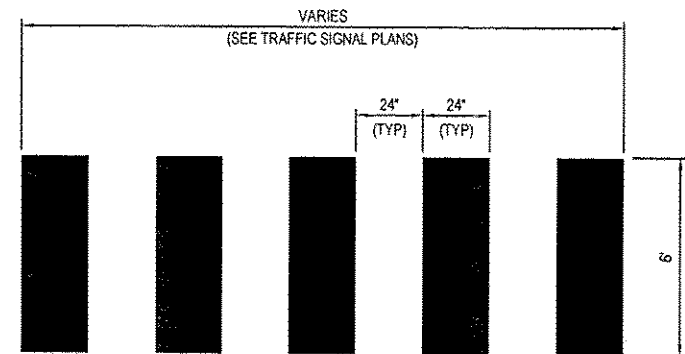
FURNISH & INSTALL ONE (1) EACH SIGN
(SPECIAL)

DETAIL OF
SIGN PANEL - TYPE 1
(NOT TO SCALE)

STA 31+70, 38.0' LT

TRAFFIC SIGNAL SCHEDULE

FROM		TO		SIGN PANEL T1 (SQ FT)	ELCBL C SIGNAL 14 2C (FOOT)	ELCBL C SIGNAL 14 3C (FOOT)	PED SH P LED 1F BM CT (EACH)	PED PUSH- BUTTON (EACH)
STATION	OFFSET	STATION	OFFSET					
GOVERNORS' PARKWAY BASELINE								
186+46	44.8' RT			0.75			1	1
186+46	44.8' RT	187+30	45.9' RT		132	132		
186+50	55.3' LT			0.75			1	1
186+50	55.3' LT	187+30	45.9' RT		234	234		
DISTRICT DRIVE BASELINE								
31+70	38.0' LT			1.50				
TOTAL				3	366	366	2	2



CROSS WALK DETAIL
(NOT TO SCALE)

FILE NAME = 12037 - TRAFFIC SIGNAL PLANS.DWG

USER NAME = SAM WRIGLEY

DESIGNED -

REVISED -

PLOT SCALE = 8" = 1'

CHECKED -

REVISED -

PLOT DATE = 2013-12-09

DATE = 2013-02-22

REVISED -

STATE OF ILLINOIS
DEPARTMENT OF TRANSPORTATION

TRAFFIC SIGNAL PLANS
NOTES, SCHEDULE & DETAILS

SCALE: 1" = 20'

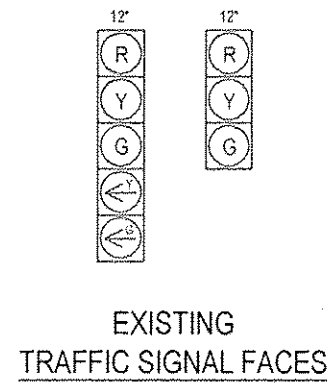
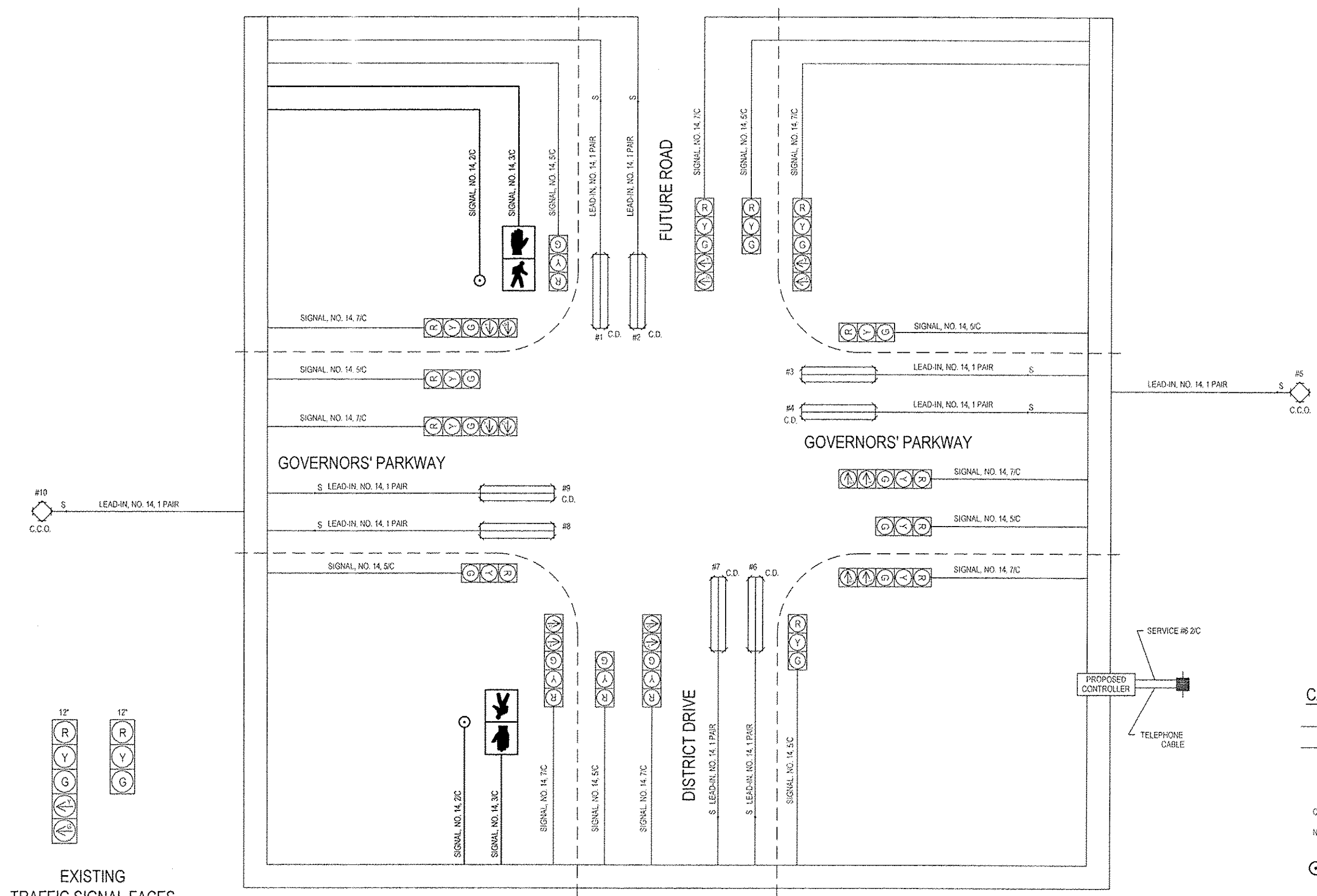
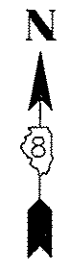
SHEET NO. 1 OF 3 SHEETS

STA. TO STA.

F.A.U. RTE.	SECTION	COUNTY	TOTAL SHEETS	SHEET NO.
8902	12-00101-00-SW	MADISON	13	10

CONTRACT NO. 97547

FED. ROAD DIST. NO. ILLINOIS FED. AID PROJECT



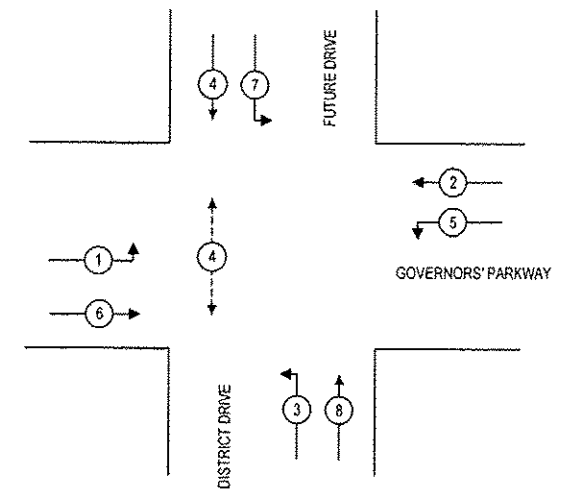
- CABLE DIAGRAM LEGEND**
- EXISTING ELECTRIC CABLE IN CONDUIT
 - S — EXISTING CABLE SPLICE
 - 2/C INDICATES NUMBER OF CONDUCTORS IN EXISTING CABLE
 - C.D. EXISTING CALL DELAY (SEE GENERAL NOTES)
 - C.C.O. EXISTING CALL CARRY OVER (SEE GENERAL NOTES)
 - NO. 6 INDICATES EXISTING AMERICAN WIRE (AWG) SIZE 6
 - #6 EXISTING LOOP DETECTOR NUMBER
 - ⊙ PROPOSED PEDESTRIAN PUSH-BUTTON

CABLE DIAGRAM

FILE NAME * 12037 - TRAFFIC SIGNAL PLANS.DWG	USER NAME * SAM WRIGLEY	DESIGNED -	REVISED -	STATE OF ILLINOIS DEPARTMENT OF TRANSPORTATION	TRAFFIC SIGNAL PLANS CABLE DIAGRAM		F.A.U. RTE. 8902	SECTION 12-00101-00-SW	COUNTY MADISON	TOTAL SHEETS 13	SHEET NO. 11
	PLOT SCALE * 0" = 1'	CHECKED -	REVISED -				CONTRACT NO. 97547				
PLOT DATE * 2013-12-09	DATE 2013-02-22	REVISED -	REVISED -	SCALE:	SHEET NO. 2 OF 3 SHEETS	STA. TO STA.	FED. ROAD DIST. NO. ILLINOIS FED. AID PROJECT				

TRAFFIC SIGNAL LEGEND

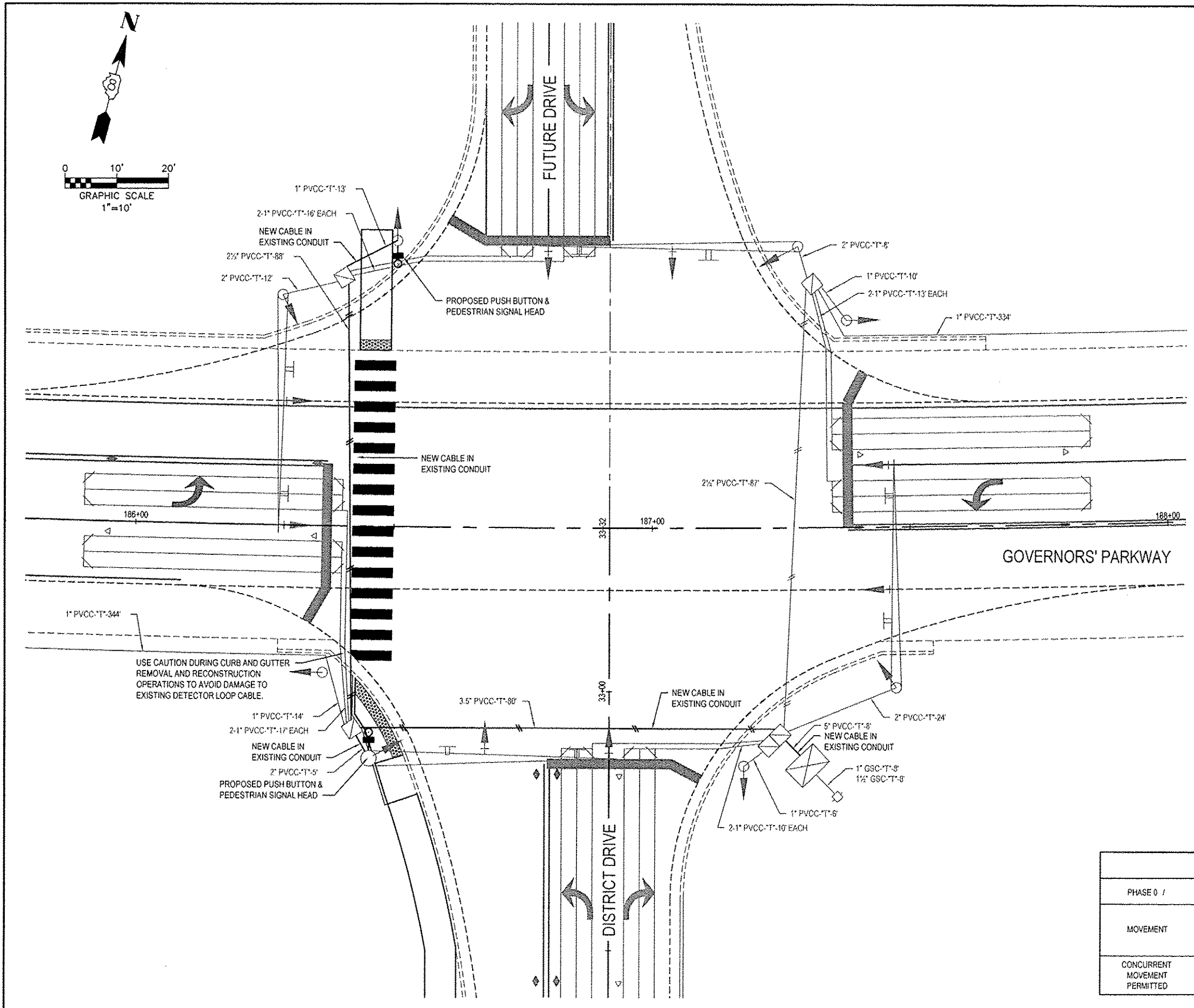
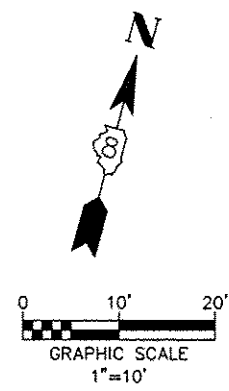
- EXISTING SIGNAL HEAD
- EXISTING SIGNAL HEAD WITH BACKPLATE
- EXISTING HANDHOLE
- EXISTING DOUBLE HANDHOLE
- EXISTING DETECTOR LOOP
- EXISTING DETECTOR LOOP
- EXISTING CONDUIT: "T" TRENCH, "P" PUSHED, SIZE SPECIFIED
- POLYVINYL CHLORIDE CONDUIT
- GALVANIZED STEEL CONDUIT
- EXISTING MAST ARM
- EXISTING SERVICE POLE
- EXISTING CONTROLLER WITH CONCRETE FOUNDATION, TYPE D
- EXISTING TRAFFIC SIGNAL POST, ALUMINUM 10 FT., WITH CONCRETE FOUNDATION, TYPE A
- PROPOSED PUSH BUTTON & PEDESTRIAN SIGNAL HEAD

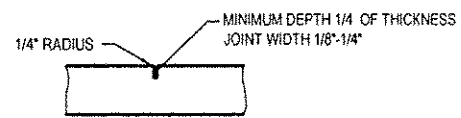


PHASE DESIGNATION DIAGRAM

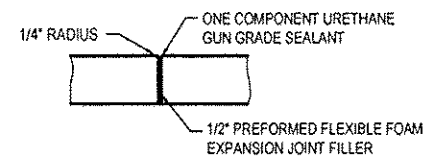
SEQUENCE OF OPERATIONS

FULL-ACTUATED CONTROLLER AND TYPE IV CABINET								
PHASE # /	1	2	3	4	5	6	7	8
MOVEMENT								
CONCURRENT MOVEMENT PERMITTED	5 OR 6	5 OR 6	7 OR 8	7 OR 8	1 OR 2	1 OR 2	3 OR 4	3 OR 4





CONTRACTION JOINT



EXPANSION JOINT

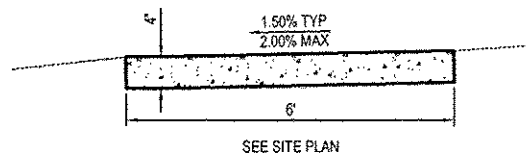
TYPICAL CONCRETE SIDEWALK JOINT DETAILS
NOT TO SCALE

NOTES:

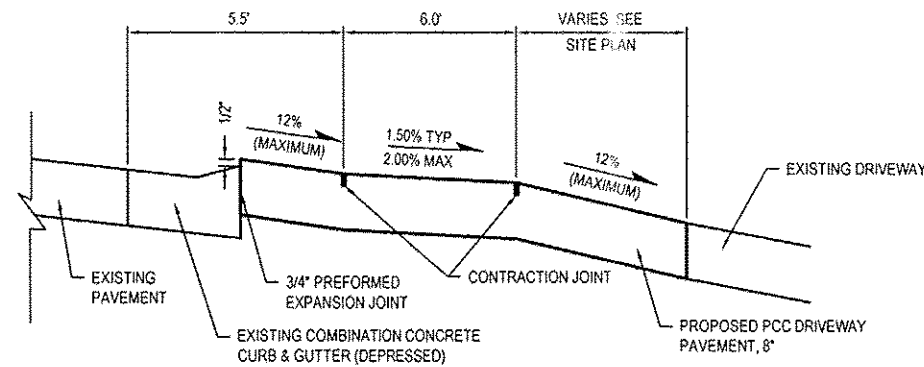
CONTRACTION JOINTS ARE TO BE ON ±6' CENTERS

EXPANSION JOINTS ARE TO BE ON ±50' CENTERS AND AT POINTS OF CURVATURE.

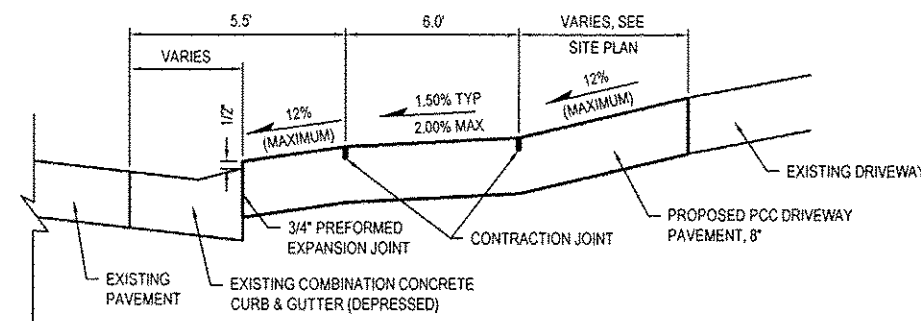
EXPANSION JOINT REQUIRED BETWEEN THE SIDEWALK AND EXISTING PAVEMENT OR STRUCTURES.



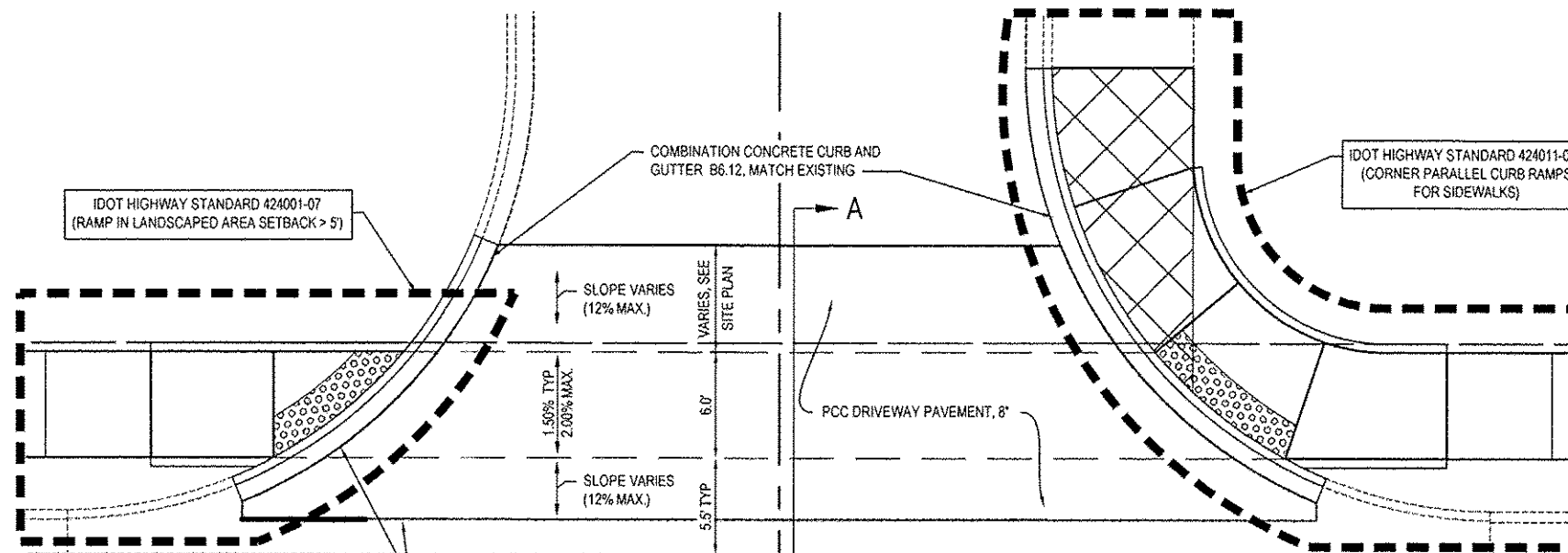
PC CONCRETE SIDEWALK DETAIL
NOT TO SCALE



DRIVEWAY SECTION A-A
STA. 14+26, LEFT



DRIVEWAY SECTION A-A
STA. 16+65, LEFT



DRIVEWAY RECONSTRUCTION DETAIL
NOT TO SCALE

NOTES:

CONTRACTOR MAY CLOSE ENTRANCE COMPLETELY TO FACILITATE CONSTRUCTION OPERATIONS. CLOSURE PERIOD TO BE COORDINATED WITH THE SCHOOL DISTRICT

FILE NAME = 12037 - DETAILS.DWG

USER NAME =	SAM WRIGLEY	DESIGNED -	---	REVISED -	---
		DRAWN -	---	REVISED -	---
PLOT SCALE =	6" = 1'	CHECKED -	---	REVISED -	---
PLOT DATE =	2013-12-09	DATE -	2013-02-22	REVISED -	---

STATE OF ILLINOIS
DEPARTMENT OF TRANSPORTATION

DETAILS

SCALE:	SHEET NO. 1 OF 1 SHEETS	STA. _____ TO STA. _____	F.A.U. RTE. 6902	SECTION 12-00101-00-SW	COUNTY MADISON	TOTAL SHEETS 13	SHEET NO. 13
--------	-------------------------	--------------------------	------------------	------------------------	----------------	-----------------	--------------

CONTRACT NO. 97547	
FED. ROAD DIST. NO. _____	ILLINOIS FED. AID PROJECT