

85602

FAS ROUTE NO.	SEC	COUNTY	TOTAL SHEETS	SHEET NO
T.R. 44	*	OGLE	5	1
ILLINOIS PROJECT BROS-0141(075)				
* 12-25108-00-BR				

PLANS FOR PROPOSED FEDERAL-AID PROJECT

02-28-14 LETTING ITEM 102

(T.R. 44) FOX LANE ROAD PROPOSED STRUCTURE NO. 071-5129 SECTION 12-25108-00-BR OGLE COUNTY PROJECT BROS-0141(075)

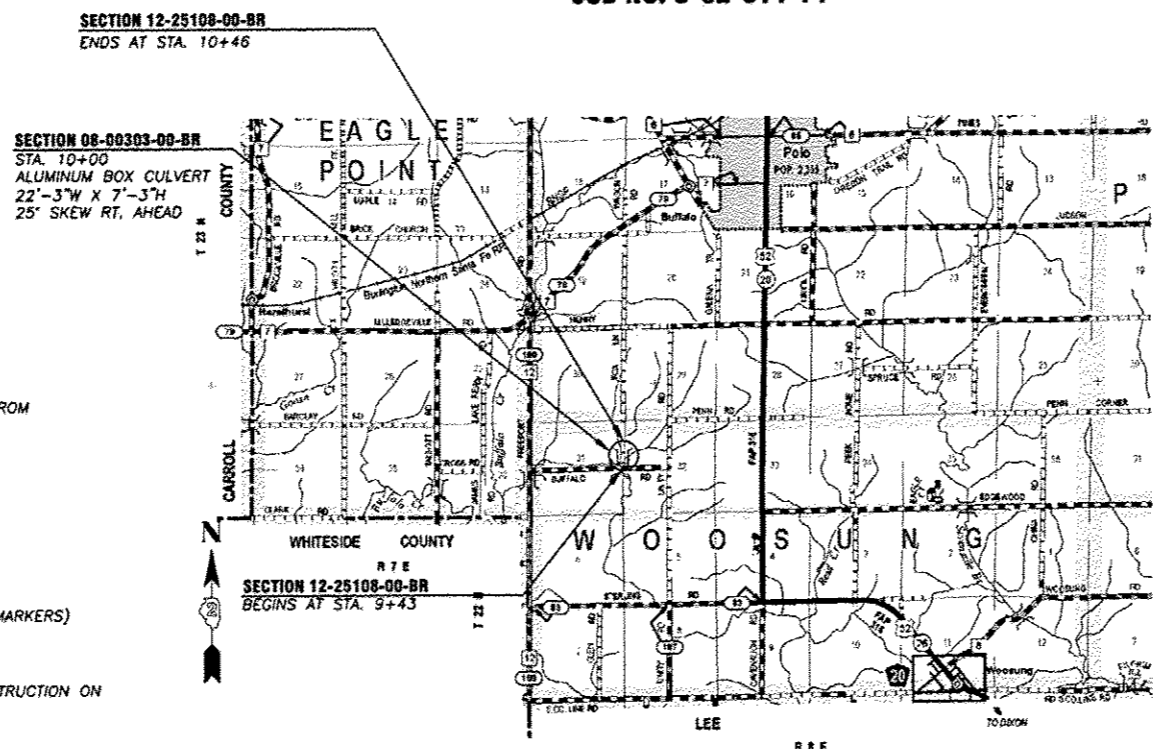
JOB NO. C-92-014-14

INDEX OF SHEETS

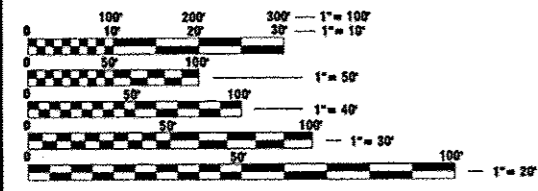
- COVER SHEET
- SUMMARY AND SCHEDULE OF QUANTITIES AND TYPICAL SECTIONS
- PLAN AND PROFILE
- ROADWAY CROSS SECTIONS
- CULVERT DETAILS

STANDARDS:

- 000001-06 STANDARD SYMBOLS, ABBREVIATIONS, AND PATTERNS
- 280001-07 TEMPORARY EROSION CONTROL SYSTEMS
- 515001-03 NAME PLATE FOR BRIDGES
- 701006-05 OFF-ROAD OPERATIONS, 2L, 2W, 15'(4.5 m) TO 24'(600 mm) FROM PAVEMENT EDGE
- 701301-04 LANE CLOSURE, 2L, 2W, SHORT TIME OPERATIONS
- 701901-03 TRAFFIC CONTROL DEVICES
- 720011-01 METAL POSTS FOR SIGNS, MARKERS & DELINEATORS
- 728001-01 TELESCOPING STEEL SIGN SUPPORT
- 729001-01 APPLICATIONS OF TYPES A & B METAL POSTS (FOR SIGNS & MARKERS)
- BLR 21-9 TYPICAL APPLICATION OF TRAFFIC CONTROL DEVICES
- BLR 22-7 TYPICAL APPLICATION OF TRAFFIC CONTROL DEVICES FOR CONSTRUCTION ON RURAL LOCAL HIGHWAYS



LOCATION MAP
GROSS LENGTH OF SECTION = 103 FEET (0.02 MILE)
NET LENGTH OF SECTION = 103 FEET (0.02 MILE)



FULL SIZE PLANS HAVE BEEN PREPARED USING STANDARD ENGINEERING SCALES. REDUCED SIZED PLANS WILL NOT CONFORM TO STANDARD SCALES. IN MAKING MEASUREMENTS ON REDUCED PLANS, THE ABOVE SCALES MAY BE USED.

J.U.L.I.E.
JOINT UTILITY LOCATION INFORMATION FOR EXCAVATION
1-800-892-0123

CONTRACT NO. 85602

DESIGN CRITERIA

ROADWAY	DESIGN CLASSIFICATION	ADT	DESIGN SPEED
FOX LANE ROAD	LOCAL ROAD	<5	20
	3R GUIDELINES	2% TRUCKS	



Scott Brown 12/13/2013

DATE
SCOTT A. BROWN
DIXON, ILLINOIS
ILLINOIS LICENSED PROFESSIONAL ENGINEER NO. 062-053649
EXPIRES 11-30-2015

wendler
wendler engineering services, inc.
GROUNDBREAKING SOLUTIONS
engineers - surveyors - scientists
www.wendlers.com ph: 815.288.2281
Illinois Professional Design Firm No. 184-000848

STATE OF ILLINOIS
DEPARTMENT OF TRANSPORTATION
DIVISION OF HIGHWAYS

SUBMITTED 12/13 2013
Chris Cook
COUNTY ENGINEER

PASSED 1/17 2014
Paul A. Lott
DISTRICT 2 ENGINEER OF LOCAL ROADS & STREETS

RELEASED FOR LIMITED REVIEW 1/17 2014
Paul A. Lott
DEPUTY DIRECTOR OF HIGHWAYS, REGION 2 ENGINEER

PRINTED BY THE AUTHORITY OF THE STATE OF ILLINOIS

FAS ROUTE NO	SEC	COUNTY	TOTAL SHEETS	SHEET NO
T.R.44	*	OGLE	5	2

ILLINOIS PROJECT BROS-0141(075)
* 12-25108-00-BR

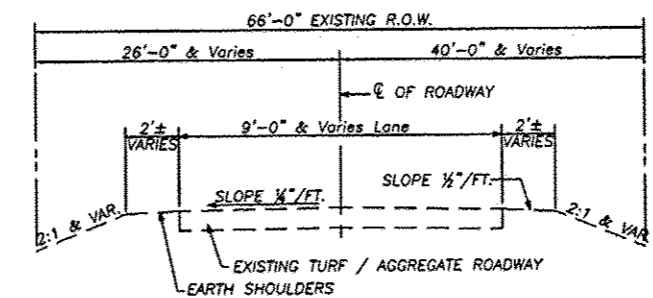
SUMMARY OF QUANTITIES

CODE NUMBER	ITEM	UNIT	TOTAL QUANTITY - CONSTRUCTION TYPE CODE :0011
20100110	TREE REMOVAL (6 TO 15 UNITS DIAMETER)	UNIT	12
20100210	TREE REMOVAL (OVER 15 UNITS DIAMETER)	UNIT	60
20200100	EARTH EXCAVATION	CU YD	25
20700220	POROUS GRANULAR EMBANKMENT	CU YD	370
28100707	STONE DUMPED RIPRAP, CLASS A4	SQ YD	118
28200200	FILTER FABRIC	SQ YD	118
40200800	AGGREGATE SURFACE COURSE, TYPE B	TON	71
50100100	REMOVAL OF EXISTING STRUCTURES	EACH	1
51500100	NAME PLATES	EACH	1
67100100	MOBILIZATION	L SUM	1
X2501000	SEEDING, CLASS 2 (SPECIAL)	ACRE	0.10
X7010216	TRAFFIC CONTROL & PROTECTION, (SPECIAL)	L SUM	1
Z0013798	CONSTRUCTION LAYOUT	L SUM	1
XX008517	ALUMINUM BOX CULVERT	EACH	1

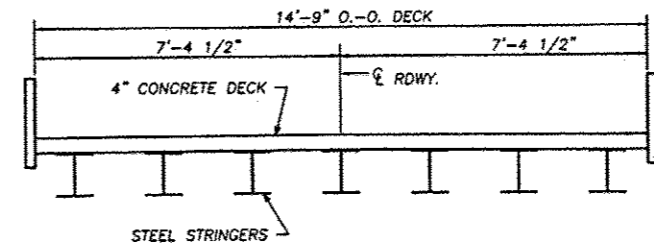
QUANTITY NOTES:
SEE SPECIAL PROVISIONS

SCHEDULE OF QUANTITIES

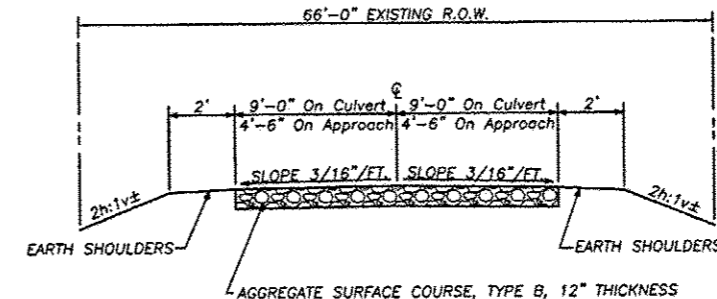
ITEM	LOCATION	UNIT	QUANTITY
20100110 TREE REMOVAL (6 TO 15 UNITS DIAMETER)	RT. STA. 10+36	UNIT	12
		TOTAL	12
20100210 TREE REMOVAL (OVER 15 UNITS DIAMETER)	RT. STA. 9+98	UNIT	60
		TOTAL	60
40200800 AGGREGATE SURFACE COURSE, TYPE B	STA. 9+43 - STA. 10+46	TON	71
		TOTAL	71



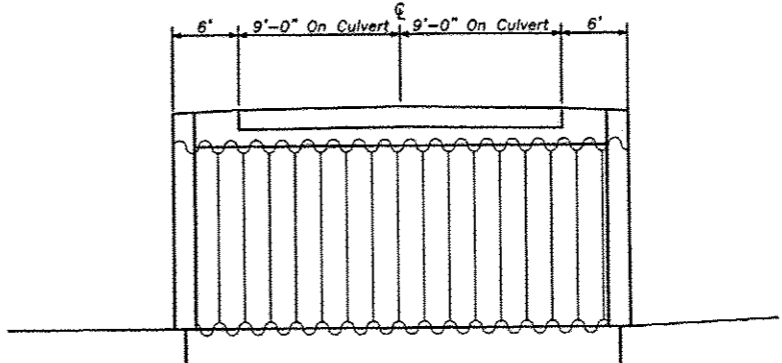
EXISTING TYPICAL SECTION
STA. 9+43 TO STA. 10+40
(BRIDGE OMISSION STA. 9+88 TO STA. 10+12)



EXISTING BRIDGE SECTION



PROPOSED TYPICAL SECTION
STA. 9+43 TO STA. 10+40



PROPOSED CULVERT SECTION
STA. 10+00

SCALE: 1" = 10'

NO.	DATE	REVISIONS

DESIGNED BY	DRAWN BY	CHECKED BY	DATE

wendler
www.wendlerdesign.com
Professional Design Firm No. 184-000848

PLANS FOR PROPOSED
OF
FOX LANE ROAD BRIDGE - SEC 12-25108-00-BR
FOR
OGLE COUNTY HIGHWAY DEPARTMENT

SHEET TITLE
SCHEDULE OF QUANTITIES

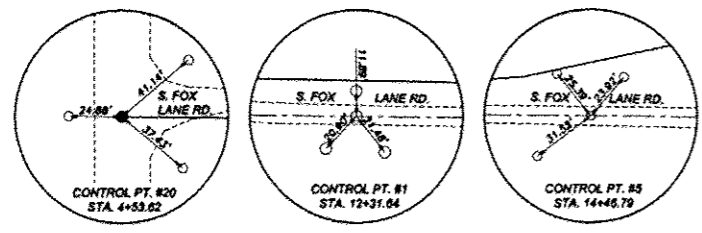
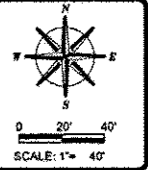
JOB NUMBER
2120175

DATE
01/02/2014

SHEET NO.
2 of 5

FAS ROUTE NO.	SEC	COUNTY	TOTAL SHEETS	SHEET NO.
T.R. 44	*	OGLE	5	3

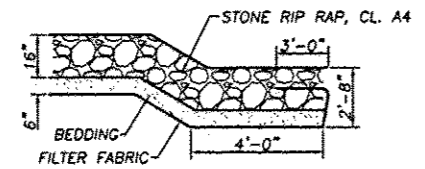
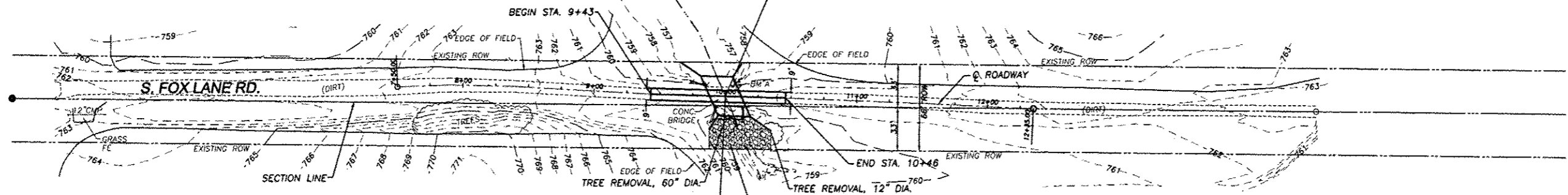
ILLINOIS PROJECT BROS-0141(075)
* 12-25108-00-BR



NOTES
ALL STUMP, TREE REMOVAL (< 6IN DIA.), CULVERTS AND BRUSH REMOVAL ARE CONSIDERED INCIDENTAL TO EARTH EXCAVATION.

BENCHMARKS
BM "A" - SET CHISELED "A" ON NORTHWEST HEADWALL OF EXISTING STRUCTURE ELEV. 760.10
BM "B" (C.P. #2) - SET IRON ROD ±228' NORTH OF NORTHWEST CORNER OF BRIDGE, ±7' WEST OF WEST EDGE OF GRAVEL OF S. FOX LANE RD. ELEV. 763.15
BM "C" (C.P. #13) - SET IRON ROD ±130' SOUTH OF SOUTHEAST CORNER OF BRIDGE ±10' EAST OF EAST EDGE OF GRAVEL OF S. FOX LANE RD. ELEV. 762.99

EXISTING STRUCTURE (SN 071-3313)
STA. 10+00
INCLUDES A SINGLE SPAN STEEL STRINGER BRIDGE WITH A CONCRETE DECK ON CLOSED CONCRETE ABUTMENTS 23.5 FT BK-BK ABUTMENTS 25' SKEW RT. AHEAD. UPSTREAM 22'X10' DROP BOX

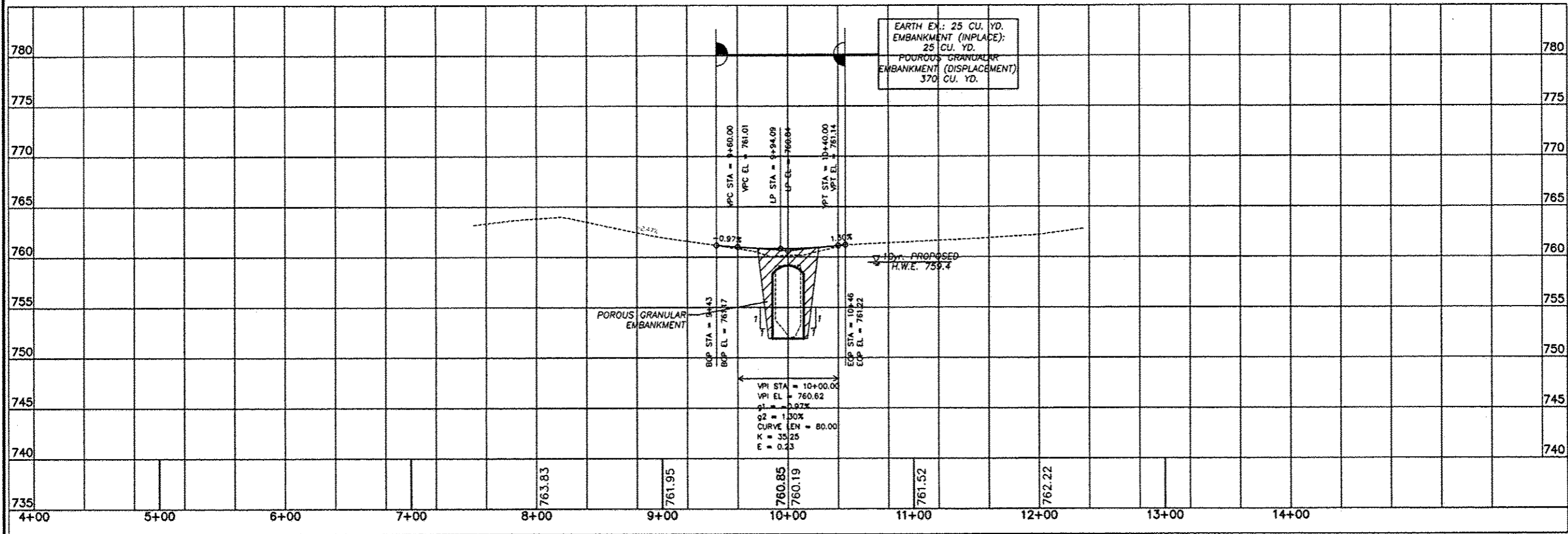


FLANK STONE RIPRAP TREATMENT FOR STREAM CROSSINGS

SCALES:
1" = 40' HOR
1" = 5' VER

UTILITIES
GAS: NICOR (630) 983-8676 NAPERVILLE, ILLINOIS
ELECTRIC: COMMONWEALTH EDISON COMPANY (815) 756-9541 DEKALB, ILLINOIS
TELEPHONE: FRONTIER COMMUNICATIONS (855) 626-8452 BELVIDERE, ILLINOIS

THE LOCATIONS OF UTILITY FACILITIES AS SHOWN ON THESE PLANS ARE AN ESTIMATE AND NOT INTENDED AS FIELD LOCATIONS FOR CONSTRUCTION. THE CONTRACTOR IS RESPONSIBLE FOR CONTACTING ALL UTILITIES PRIOR TO CONSTRUCTION AND CALLING J.U.L.I.E. AT 800-892-0123 FOR CONFIRMATION OF EXISTING UTILITY LOCATIONS.



PLAN FOR PROPOSED
OF
FOX LANE RD BRIDGE - SEC 12-25108-00-BR
FOR
OGLE COUNTY HIGHWAY DEPARTMENT

SHEET TITLE	PLAN & PROFILE
JOB NUMBER	2120175
DATE	11/20/2013
SHEET NO.	3 of 5

REVISIONS	DATE	BY	CHKD

FAS ROUTE NO	SEC	COUNTY	TOTAL SHEETS	SHEET NO
T.R.44	*	OGLE	5	4

ILLINOIS PROJECT BROS-0141(075)
* 12-25108-00-BR

REVISIONS	DATE	REVISION

DESIGNED BY	CHECKED BY	DATE

wendler
 wendler engineering services, inc.
 geotechnical engineering solutions
 engineers - surveyors - scientists
 www.wendlergs.com Ph: 815.268.2261
 1000 Westchester Drive, Farmington, IL 62521

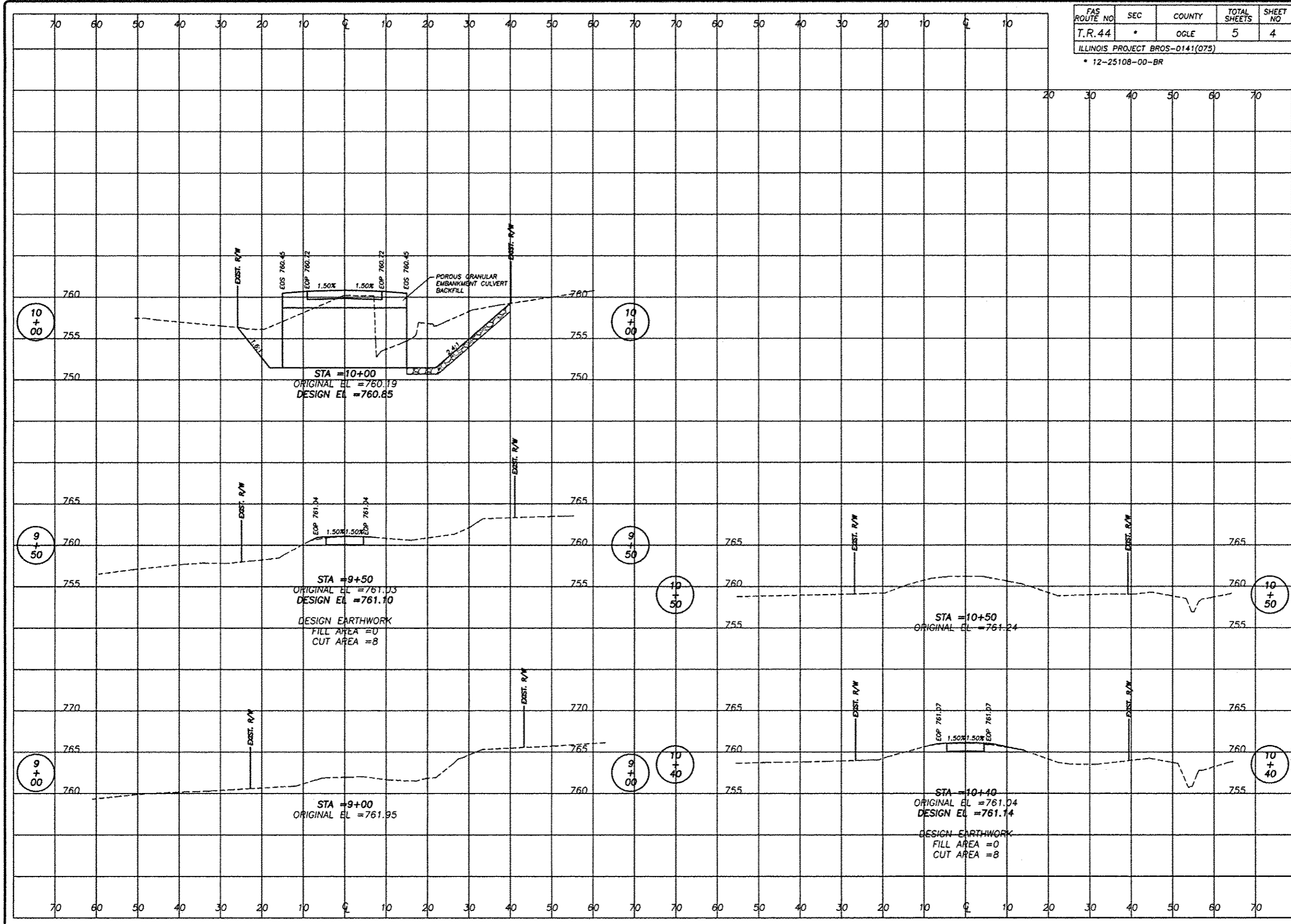
PLANS FOR PROPOSED
 OF
FOX LANE BRIDGE - SEC 12-25108-00-BR
 FOR
 OGLE COUNTY HIGHWAY DEPARTMENT

SHEET TITLE
CROSS SECTIONS

JOB NUMBER
 2120175

DATE
 11/20/2013

SHEET NO.
4 of 5



11/20/2013 10:00 AM

FAS ROUTE NO.	SEC	COUNTY	TOTAL SHEETS	SHEET NO.
T.R. 44	*	OGLE	5	5

ILLINOIS PROJECT BROS-0141(075)
* 12-25108-00-BR

SCALE: 1" = 10'

GENERAL NOTES

- All work and materials shall be in accordance with the Illinois Department of Transportation (IDOT) Standard Specifications for Road and Bridge Construction adopted January 1, 2012 and latest supplemental specifications and recurring special provisions, unless noted otherwise on these plans or special provisions.
- The Contractor shall verify all dimensions in the field prior to commencing work. The Engineer shall be notified of any discrepancies which may exist, prior to proceeding with the work.
- Any information concerning type or location of underground and other utilities is not guaranteed to be accurate or all inclusive. The Contractor is responsible for making his own determinations as to the type and location of the utilities as may be necessary to avoid damage thereto. Contractor shall call J.U.L.I.E. prior to excavation.
- The Contractor is responsible for design, installation and removal of all excavation support systems.
- The excavation and work area shall be properly drained at all times during construction. All wet, loose, frozen or other unsuitable material shall be removed prior to placement of concrete or compacted backfill. The cost of any pumping required shall be included in the cost of "Aluminum Box Culvert".
- It shall be the responsibility of the Contractor to divert the stream flow during construction in order to keep the construction areas free of water. The method of water diversion shall be subject to the approval of the Engineer and cost shall be included with "Aluminum Box Culvert".

CAST-IN-PLACE CONCRETE NOTES

- All cast-in-place concrete work shall be in accordance with Section 540 of the Illinois Department of Transportation (IDOT) Standard Specifications for Road and Bridge Construction adopted January 1, 2012, supplemental specifications and recurring special provisions and as noted below.
- Reinforcement bars shall conform to the requirements of ASTM A 706 GR60.
- Exposed edges of cast-in-place concrete shall be beveled 3/4".
- All construction joints shall be bonded.
- Concrete mix designs shall be submitted to the Engineer for review and approval a minimum of 7 days prior to ordering or placing concrete.
- Backfill material on all sides of the box and wings shall be compacted in accordance with Section 502 using walk behind tampers.

REVISIONS

NO.	DATE	DESCRIPTION

DESIGNED BY: SAJ
DRAWN BY: BUS
CHECKED BY: 2101175.dmg
DATE: 11/20/2013
SCALE: 1" = 10'

wendler
wender engineering services, inc.
2101175.dmg
www.wendlereng.com
ph: 815.283.2281
Brook Professional Design Firm No. 184000848

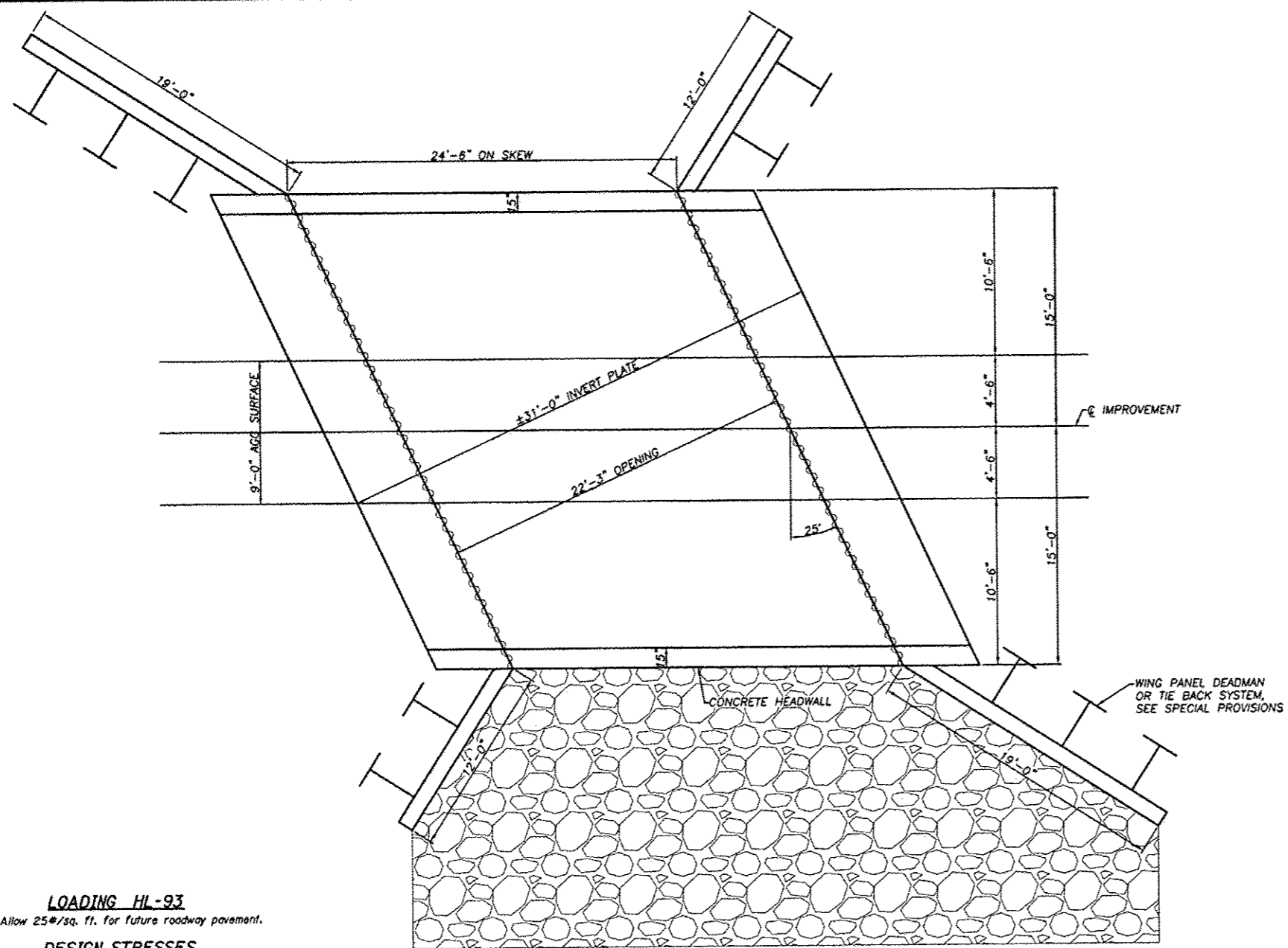
PLANS FOR PROPOSED
OF
FOX LANE ROAD BRIDGE - SEC 12-25108-00-BR
FOR
OGLE COUNTY HIGHWAY DEPARTMENT

SHEET TITLE
CULVERT
PLAN

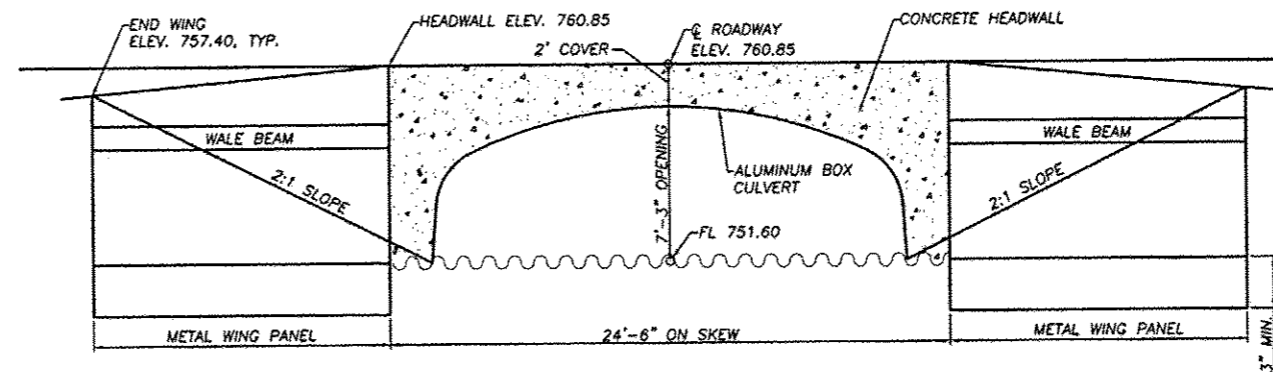
JOB NUMBER
2120175

DATE
11/20/2013

SHEET NO.
5 of 5



PLAN



ELEVATION

LOADING HL-93
Allow 25#/sq. ft. for future roadway pavement.

DESIGN STRESSES
Field Units
fy = 60,000 psi (Reinforcement)
fc = 4,000 psi

Design Fill Height on Box = 2.0

DESIGN SPECIFICATIONS
AASHTO LRFD 6TH Edition

WATERWAY INFORMATION TABLE

Drainage Area = 1.5 sq. miles		Low Grade Elev. = 760.8		at Roadway Sta. 9+94					
Flood	Frequency Year	Q (cfs)	Opening Sq. Ft.		Natural H.W.E.	Head-Ft.		Headwater El.	
			Existing	Proposed		Existing	Proposed	Existing	Proposed
Design	10	641	130	136	759.5	0.0	0.0	759.4	759.4
Base	100	1260	130	136	760.7	1.1	1.0	761.8	761.7
Overtopping									
Max Calc.									