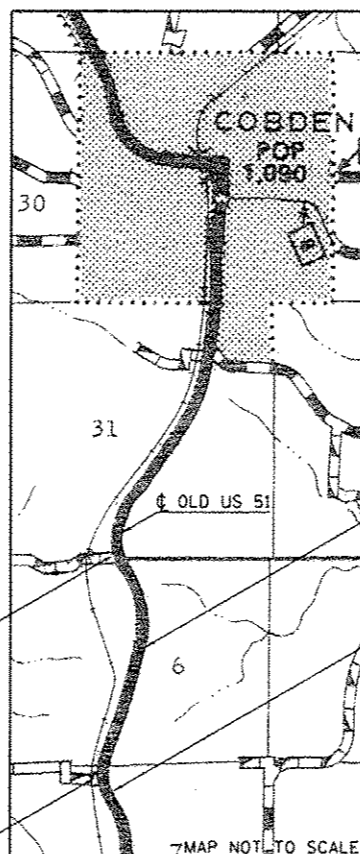


STATE OF ILLINOIS
DEPARTMENT OF TRANSPORTATION
DIVISION OF HIGHWAYS

**PROPOSED
HIGHWAY PLANS**

FAS ROUTE 1911 (Old US 51)
SECTION 12RS-2
PROJECT ACRS-1911 (106)
SMART RESURFACING AND PATCHING
UNION COUNTY

C-99-008-14



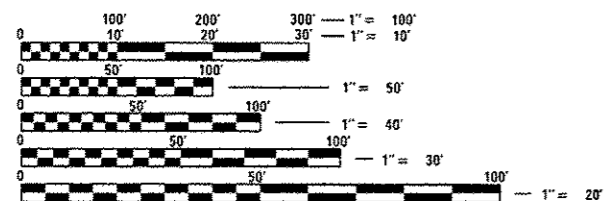
FOR INDEX OF SHEETS, SEE SHEET NO. 2

TRAFFIC DATA

OLD US 51: 2014 ADT = 2810 WITH 3.2% TRUCKS
2034 ADT = 3430 WITH 3.4% TRUCKS

TOWNSHIPS

COBDEN



FULL SIZE PLANS HAVE BEEN PREPARED USING STANDARD ENGINEERING SCALES. REDUCED SIZED PLANS WILL NOT CONFORM TO STANDARD SCALES. IN MAKING MEASUREMENTS ON REDUCED PLANS, THE ABOVE SCALES MAY BE USED.

J.U.L.I.E.
JOINT UTILITY LOCATION INFORMATION FOR EXCAVATION
1-800-892-0123
OR 811

PROJECT ENGINEER: CHARLES STEIN
PROJECT DESIGNER: PAULA STOVER

CONTRACT NO. 78387

GROSS LENGTH = 3354 FT. = 0.635 MILE
NET LENGTH = 3354 FT. = 0.635 MILE

F.A.S. RTE.	SECTION	COUNTY	TOTAL SHEETS	SHEET NO.
1911	12RS-2	UNION	10	1
		ILLINOIS	CONTRACT NO. 78387	

D-99-007-14



STATE OF ILLINOIS
DEPARTMENT OF TRANSPORTATION
DIVISION OF HIGHWAYS

SUBMITTED Dec 6 2012
Arthur J. Keim
DEPUTY DIRECTOR OF HIGHWAYS, REGION ENGINEER

Jan 24 2014
John D. Baranzelli, P.E.
ENGINEER OF DESIGN AND ENVIRONMENT

Jan 24 2014
Omer Osman, P.E.
DIRECTOR OF HIGHWAYS, CHIEF ENGINEER

**PRINTED BY THE AUTHORITY
OF THE STATE OF ILLINOIS**

INDEX OF SHEETS

SHT. NO.	DESCRIPTION
1	COVER SHEET
2	INDEX OF SHEETS AND STANDARDS
3	SIGNATURE SHEET
4	GENERAL NOTES, MIX DESIGN, AND COMMITMENTS
5	SUMMARY OF QUANTITIES
6	TYPICAL SECTION - OLD US 51
7-8	SCHEDULES OF QUANTITIES
9	DETAIL: TEMPORARY RAMP
10	DETAILS: TEMPORARY HOT-MIX ASPHALT TRANSITIONS, UNEVEN LANES SIGN, ROUGH GROOVED SURFACE SIGN

STANDARDS

000001-06
 001001-02
 001006
 442201-03
 701006-05
 701011-04
 701301-04
 701306-03
 701311-03
 701336-06
 701901-03
 780001-04

FILE NAME *	USER NAME = Stover.pg	DESIGNED - _____	REVISED - _____	STATE OF ILLINOIS DEPARTMENT OF TRANSPORTATION	INDEX OF SHEETS AND STANDARDS	F.A.S. RTE.	SECTION	COUNTY	TOTAL SHEETS	SHEET NO.	
at\pe_work\p\dat\stoverpg\48361384\BX	ex-CADD.dgn	DRAWN - _____	REVISED - _____			1911	12RS-2	UNION	10	2	
Default	PLOT SCALE = 100.0000 1/4 in.	CHECKED - _____	REVISED - _____			CONTRACT NO. 78387					
	PLOT DATE = 12/5/2013	DATE - _____	REVISED - _____			ILLINOIS FED. AID PROJECT					
				SCALE: _____ SHEET _____ OF _____ SHEETS STA. _____ TO STA. _____							

Prepared By: *Joe Zlamy-Revison*
DISTRICT STUDIES & PLANS ENGINEER

Examined By: *James Lewis Emery*
DISTRICT LAND ACQUISITION ENGINEER

Examined By: *Carrie Nelson*
DISTRICT PROGRAM DEVELOPMENT ENGINEER

Examined By: *Karl Kelly*
DISTRICT OPERATIONS ENGINEER

Examined By: *KRS*
DISTRICT PROJECT IMPLEMENTATION ENGINEER

Examined By: *Dwight J. Tward*
DISTRICT CONSTRUCTION ENGINEER

Examined By: *Quinn T. ...*
DISTRICT MATERIALS ENGINEER

FILE NAME *	USER NAME * Stoverpg	DESIGNED -	REVISED -	STATE OF ILLINOIS DEPARTMENT OF TRANSPORTATION	SIGNATURE SHEET				F.A.S. RTE.	SECTION	COUNTY	TOTAL SHEETS	SHEET NO.
c:\pwwork\pwwork\stoverpg\d9381384\01	xxx-CADD.dgn	DRAWN -	REVISED -		1911	12RS-2	UNION	10	3				
	PLOT SCALE * 1/8" = 1' / in.	CHECKED -	REVISED -		CONTRACT NO. 78387								
Default	PLOT DATE * 12/4/2013	DATE -	REVISED -		SCALE: _____	SHEET _____	OF _____	SHEETS	STA. _____	TO STA. _____	[ILLINOIS] FED. AID PROJECT		

GENERAL NOTES

THE THICKNESS OF HOT-MIX ASPHALT SHOWN ON THE PLANS IS THE NOMINAL THICKNESS. DEVIATIONS FROM THE NOMINAL THICKNESS WILL BE PERMITTED WHEN SUCH DEVIATIONS OCCUR DUE TO IRREGULARITIES IN THE EXISTING SURFACE OR BASE ON WHICH THE HOT-MIX ASPHALT MIXTURE IS PLACED.

FACTORS USED FOR ESTIMATING PLAN QUANTITIES ARE AS FOLLOWS AND SHALL NOT BE USED FOR THE BASIS OF FINAL QUANTITIES:

ALL HOT-MIX ASPHALT	2.016 TONS / CU YD
ALL AGGREGATE	2.05 TONS / CU YD
BITUMINOUS MATERIALS:	
ON PAVEMENT	0.09 GAL / SQ YD
INTERMEDIATE LIFTS (FOG COAT)	0.04 GAL / SQ YD
ON AGGREGATE SURFACE	0.32 GAL / SQ YD
AGGREGATE (PRIME COAT)	0.0015 TONS / SQ YD

QUANTITIES SHOWN IN THE PLANS FOR PATCHING ARE ESTIMATES. THE ACTUAL AMOUNT OF PATCHING REQUIRED SHALL BE DETERMINED BY THE ENGINEER.

THE QUANTITY OF SHORT TERM PAVEMENT MARKING SHOWN IN THE PLANS IS BASED ON ONE APPLICATION EACH FOR THE PRIME COAT AND SURFACE COURSE.

STRIP REFLECTIVE CRACK CONTROL TREATMENT SHALL BE APPLIED AS DIRECTED BY THE ENGINEER.

THE QUANTITY SHOWN FOR MIXTURE FOR CRACKS, JOINTS AND FLANGEWAYS IS AN ESTIMATE. THE ACTUAL AMOUNT USED WILL BE DETERMINED BY THE ENGINEER.

THE CONTRACTOR SHALL STAMP STATIONING IN THE PROPOSED BITUMINOUS SURFACE AT 300 FT. INTERVALS ON ALTERNATING SIDES OF THE PAVEMENT AND AS DIRECTED BY THE ENGINEER. THE STATION SYMBOL STAMPS USED SHALL BE FURNISHED BY THE CONTRACTOR. THEY SHALL BE 5 1/2 IN. TALL, OF A DESIGN APPROVED BY THE ENGINEER, AND SHALL REMAIN THE PROPERTY OF THE CONTRACTOR.

UNLESS OTHERWISE DIRECTED BY THE ENGINEER, HOT-MIX ASPHALT RESURFACING SHALL BE PLACED IN A SEQUENCE THAT WILL MINIMIZE THE TIME THE CENTERLINE EDGE IS EXPOSED TO TRAFFIC. WHEN AT THE END OF A DAY'S OPERATION THE EXPOSED CENTERLINE EDGE IS GREATER THAN 2,000 FT., THE CONTRACTOR SHALL BE REQUIRED TO PAVE IN THE ADJACENT LANE ON THE FOLLOWING WORK DAY. PRIOR TO WINTER SHUTDOWN, RESURFACING ON ADJACENT LANES IS TO BE BROUGHT UP TO THE SAME ELEVATION.

PRIOR TO PLACEMENT OF THE FINAL PAVEMENT MARKINGS THE RESIDENT ENGINEER SHOULD CONTACT THE BUREAU OF OPERATIONS AND ARRANGE FOR INSPECTION AND APPROVAL OF THE PAVEMENT MARKING LAYOUT.

COMMITMENTS

NONE

MIXTURE REQUIREMENTS

LOCATION(S):	HOT-MIX ASPHALT SURFACE COURSE
MIXTURE USE(S):	HOT-MIX ASPHALT SURFACE COURSE, MIX "C", N90
AC/PG:	PG64-22
ABRZ (MAX):	SEE BDE SPECIAL PROVISION
DESIGN AIR VOIDS:	4.0%, 90 GYRATION DESIGN
MIXTURE COMPOSITION: (GRADATION MIXTURE)	IL-9.5 MM
FRICTION AGGREGATE:	C SURFACE

LOCATION(S):	PAVEMENT PATCHING
MIXTURE USE(S):	HOT-MIX ASPHALT BINDER COURSE, N90, 1L-19.0 FINE GRADE
AC/PG:	PG64-22
ABRZ (MAX):	SEE BDE SPECIAL PROVISION
DESIGN AIR VOIDS:	4.0%, 90 GYRATION DESIGN
MIXTURE COMPOSITION: (GRADATION MIXTURE)	IL-19.0 MM FINE GRADE
FRICTION AGGREGATE:	NONE

FILE NAME =	USER NAME = Stoverpg	DESIGNED - _____	REVISED - _____	STATE OF ILLINOIS DEPARTMENT OF TRANSPORTATION	GENERAL NOTES, MIX DESIGN, AND COMMITMENTS	F.A.S. RTE.	SECTION	COUNTY	TOTAL SHEETS	SHEET NO.
Default	Default	DRAWN - _____	REVISED - _____			1911	12RS-2	UNION	10	4
		CHECKED - _____	REVISED - _____							
		DATE - _____	REVISED - _____							
					SCALE: _____ SHEET _____ OF _____ SHEETS STA. _____ TO STA. _____					CONTRACT NO. 78387
										ILLINOIS FED. AID PROJECT

SUMMARY OF QUANTITIES

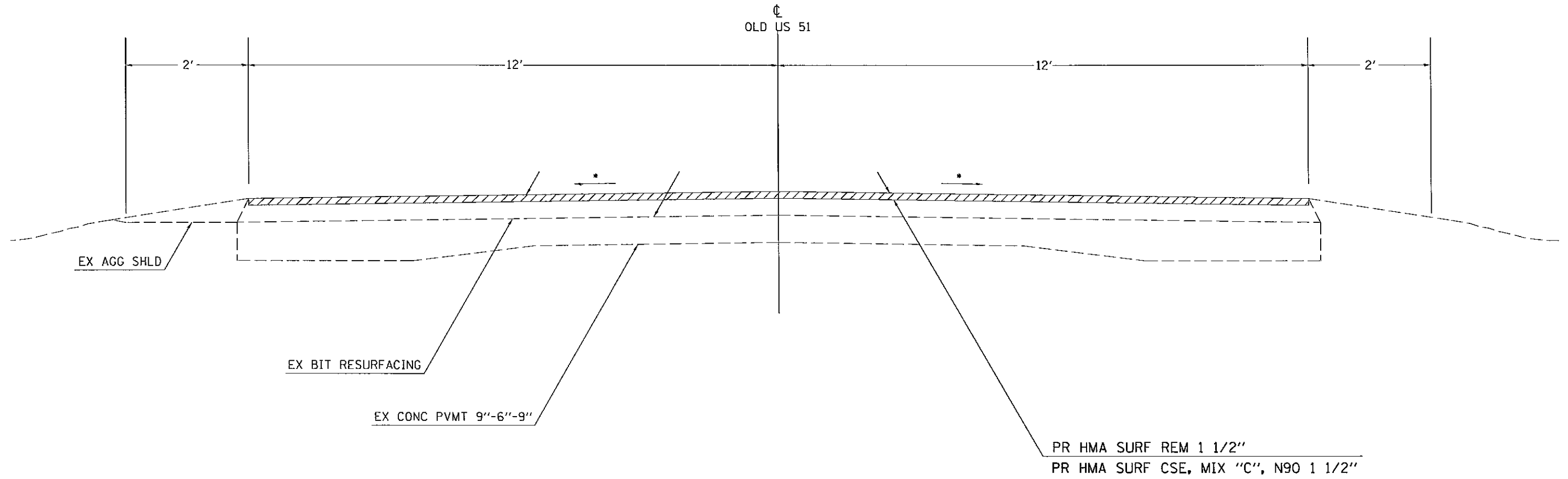
CODE NUMBER	ITEM DESCRIPTION	UNIT	TOTAL QUANTITY	UNION COUNTY	
				ROADWAY	RURAL
CONSTRUCTION TYPE CODE				80% FEDERAL ; 20% STATE 0005	
X2020110	GRADING AND SHAPING SHOULDERS	UNIT	6	6	
40600100	BITUMINOUS MATERIALS (PRIME COAT)	GALLON	805	805	
40600300	AGGREGATE (PRIME COAT)	TON	13	13	
40600400	MIXTURE FOR CRACKS, JOINTS, AND FLANGWAYS	TON	1	1	
40600990	TEMPORARY RAMP	SQ YD	53	53	
40603320	HOT-MIX ASPHALT SURFACE COURSE, MIX "C", N90	TON	751	751	
44000155	HOT-MIX ASPHALT SURFACE REMOVAL, 1 1/2"	SQ YD	8,837	8,837	
44201773	CLASS D PATCHES, TYPE I, 11 INCH	SQ YD	127	127	
44201777	CLASS D PATCHES, TYPE II, 11 INCH	SQ YD	270	270	
44201781	CLASS D PATCHES, TYPE III, 11 INCH	SQ YD	197	197	
44201783	CLASS D PATCHES, TYPE IV, 11 INCH	SQ YD	390	390	
44300200	STRIP REFLECTIVE CRACK CONTROL TREATMENT	FOOT	6,708	6,708	
67100100	MOBILIZATION	L SUM	1	1	
70100460	TRAFFIC CONTROL AND PROTECTION, STANDARD 701306	L SUM	1	1	
70100600	TRAFFIC CONTROL AND PROTECTION, STANDARD 701336	L SUM	1	1	
70106800	CHANGEABLE MESSAGE SIGN	CAL MO	2	2	
70300100	SHORT TERM PAVEMENT MARKING	FOOT	670	670	
70300220	TEMPORARY PAVEMENT MARKING - LINE 4"	FOOT	12,049	12,049	
* 78001110	PAINT PAVEMENT MARKING, LINE 4"	FOOT	12,049	12,049	
78300200	RAISED REFLECTIVE PAVEMENT MARKER REMOVAL	EACH	42	42	

* 20

* SPECIALTY ITEM

FILE NAME *	USER NAME * Stoverpg	DESIGNED -	REVISED -	STATE OF ILLINOIS DEPARTMENT OF TRANSPORTATION	SUMMARY OF QUANTITIES	F.A.S. RTE. 1911	SECTION 12RS-2	COUNTY UNION	TOTAL SHEETS 10	SHEET NO. 5
Default	c:\pwork\lowdot\stoverpg\d0361304\03x-xxx-Cr00.dgn	DRAWN -	REVISED -							
	PLOT SCALE * 1/8"=1'-0"	CHECKED -	REVISED -		SCALE: _____					
	PLOT DATE * 12/5/2013	DATE -	REVISED -		SHEET _____ OF _____ SHEETS					
					STA. _____ TO STA. _____					
										ILLINOIS FED. AID PROJECT CONTRACT NO. 78387

TYPICAL SECTION



* MATCH EXISTING SLOPE

FILE NAME = c:\pwork\pwork\stoverpg\d8361384\DX.dwg	USER NAME = Stoverpg c:\pwork\pwork\stoverpg\d8361384\DX.dwg	DESIGNED - _____	REVISED - _____	STATE OF ILLINOIS DEPARTMENT OF TRANSPORTATION	TYPICAL SECTION - OLD US 51		F.A.S. RTE. 1911	SECTION 12RS-2	COUNTY UNION	TOTAL SHEETS 10	SHEET NO. 6	
Default	PLOT SCALE = 100.0000 / in.	CHECKED - _____	REVISED - _____		SCALE: _____	SHEET _____ OF _____ SHEETS	STA. 889+10 TO STA. 922+64	ILLINOIS FED. AID PROJECT				
	PLOT DATE = 12/5/2013	DATE - _____	REVISED - _____		CONTRACT NO. 78387							

RESURFACING SCHEDULE

LOCATION STATION TO STATION	LENGTH	HMA SURF REM. 1 1/2"	HMA SURF CSE. MIX "C", N90	BIT MATL (PRIME COAT)	AGG (PRIME COAT)	TEMP RAMP
	FEET	SQ YD	TON	GAL	TON	SQ YD
STA 889+10 TO STA 922+64	3354	8837	751	805	13	53

PATCHING SCHEDULE

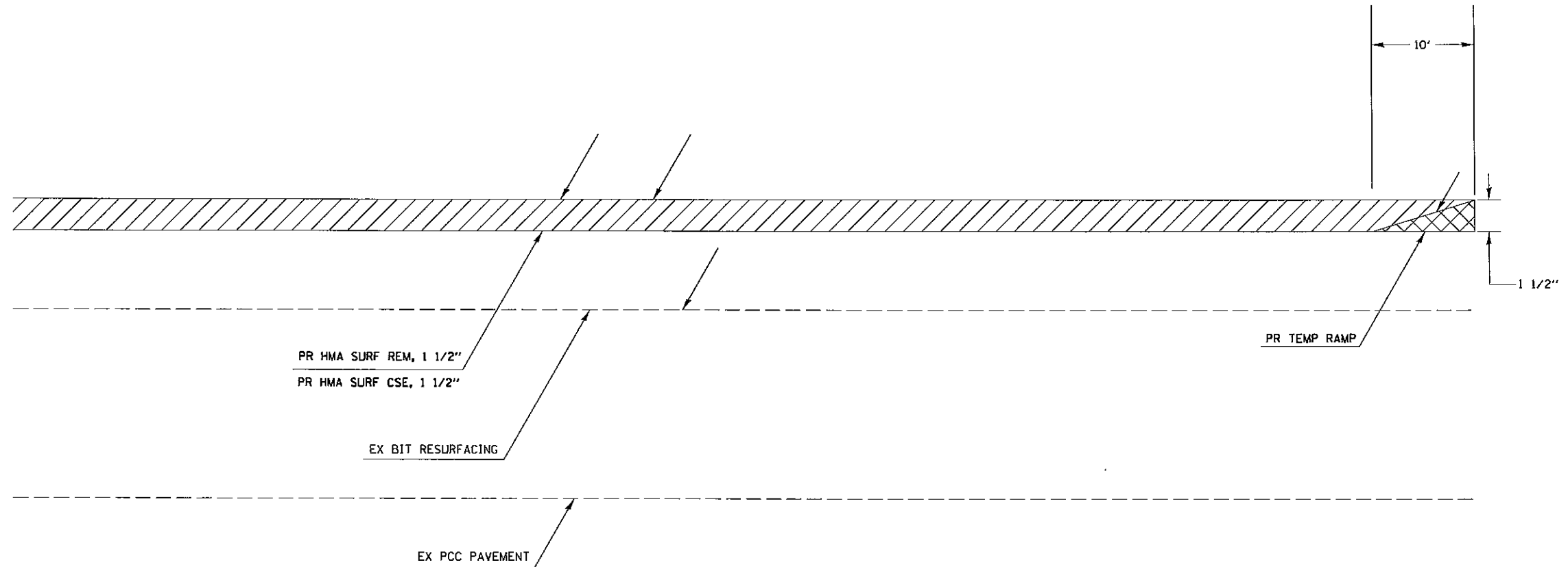
TYPE 1 (SQ YD)	TYPE 2 (SQ YD)	TYPE 3 (SQ YD)	TYPE 4 (SQ YD)
127	270	197	390
127	270	197	390

PAVEMENT MARKING SCHEDULE

LOCATION STATION TO STATION	LENGTH	LINE 4"		REMARKS
		SOLID WHITE	SOLID YELLOW	
		FOOT	FOOT	
889+10 TO 898+28	918	1836	1836	NO PASSING
898+28 TO 907+16	888	1776	1110	NO PASSING LEFT
907+16 TO 908+55	139	278	278	NO PASSING
908+55 TO 917+90	935	1870	1169	NO PASSING RIGHT
917+90 TO 922+64	474	948	948	NO PASSING
SUBTOTALS		6,708	5,341	
TOTAL		12,049		

TEMPORARY RAMP DETAIL

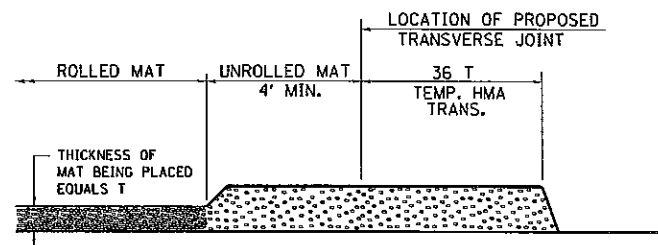
OLD US 51



TO BE USED:
 STA 889+10 BEGINNING OF PROJECT
 STA 922+64 END OF PROJECT

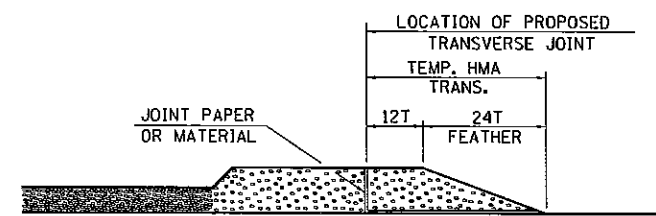
FILE NAME =	USER NAME = Stoverpg	DESIGNED -	REVISED -	STATE OF ILLINOIS DEPARTMENT OF TRANSPORTATION	DETAILS: TEMPORARY RAMPS			F.A.S. RTE.	SECTION	COUNTY	TOTAL SHEETS	SHEET NO.
cs:\pw_work\pindot\stoverpg\d0361384\DXxxx-CADD.dgn	PLLOT SCALE = 100.0000' / in.	DRAWN -	REVISED -					1911	12RS-2	UNION	10	9
Default	PLLOT DATE = 12/5/2013	CHECKED -	REVISED -		SCALE: _____ SHEET _____ OF _____ SHEETS STA. _____ TO STA. _____			CONTRACT NO. 78387				
		DATE -	REVISED -		ILLINOIS FED. AID PROJECT							

TEMPORARY HOT-MIX ASPHALT TRANSITIONS



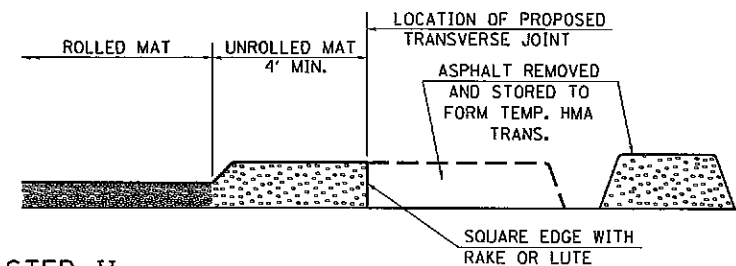
STEP I

1. PLACE HOT-MIX ASPHALT MAT, LENGTH 36 TIMES THE THICKNESS OF THE MAT BEING PLACED PAST THE PROPOSED TRANSVERSE JOINT LOCATION USING NORMAL OPERATING PROCEDURES.
2. EXTREME CARE SHOULD BE TAKEN TO MAINTAIN ENOUGH MATERIAL IN FRONT OF THE SCREED TO MAINTAIN REQUIRED PAVING DEPTH.



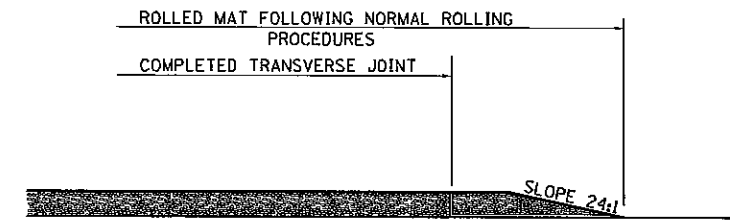
STEP III

1. JOINT PAPER OR OTHER PRESELECTED JOINT MATERIAL IS THEN PLACED IN THE CLEARED AREA AND THE EXCESS ASPHALT USED TO HAND FORM A TRANSITION TO THE DIMENSIONS SHOWN ABOVE.
2. NOTE THAT IN CONSTRUCTING THE TRANSITION, THE MAT DEPTH IS CONTINUED AS PART OF THE TRANSITION BEFORE FORMING THE FEATHER.



STEP II

1. MOVE THE PAVER OUT OF THE WAY AND REMOVE THE ASPHALT FROM THE AREA OF THE PROPOSED TEMPORARY HOT-MIX ASPHALT TRANSITION.
2. SQUARE UP THE END OF THE MAT WITH A RAKE OR LUTE.
3. NOTE THAT THE MAT WITHIN 4' OF THE END OF JOINT IS NOT TO BE ROLLED AT THIS TIME.

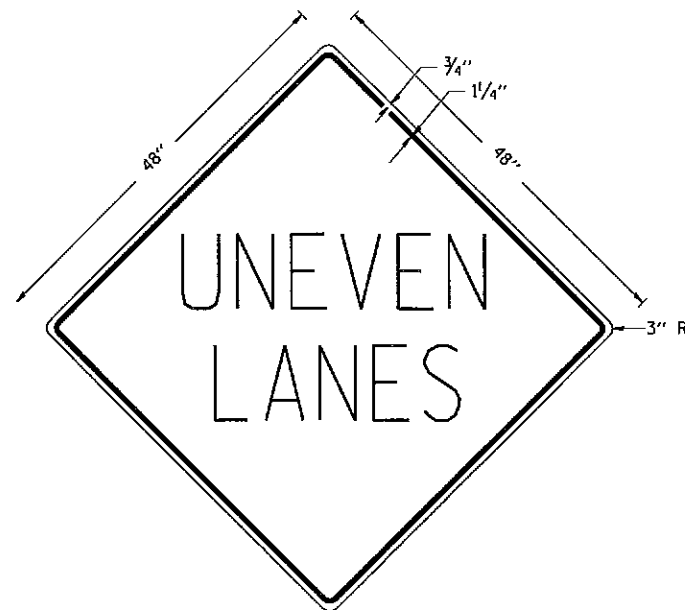


STEP IV

1. COMPLETE TEMPORARY TRANSITION BY ROLLING.
2. TO RESUME PAVING, AT THE JOINT, REMOVE TEMPORARY TRANSITION AND DISPOSE OF THE MATERIAL ACCORDING TO ART. 202.03 OF THE STD. SPECS. (COST INCLUDED IN THE CONTRACT).
3. CONSTRUCTING THE TEMPORARY TRANSITIONS WILL NOT BE PAID FOR SEPARATELY BUT WILL BE INCLUDED IN THE HOT-MIX ASPHALT MATERIAL BEING PLACED.

UNEVEN LANES SIGN

W8-11 (48" x 48")



COLORS:

LEGEND AND BORDER - BLACK NON-REFLECTORIZED
BACKGROUND - ORANGE REFLECTORIZED

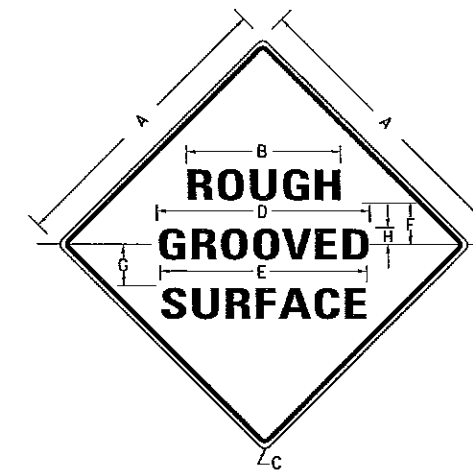
NOTE: PRIOR TO ALLOWING TRAFFIC ON ANY PORTION OF THE ROADWAY THAT HAS BEEN COLDMILLED OR BEFORE RESURFACING OPERATIONS BEGIN, THE CONTRACTOR SHALL HAVE ERECTED "UNEVEN PAVEMENT" SIGNS THAT CONFORM TO THE ABOVE DETAILS. A MINIMUM OF ONE SIGN AT EACH END OF THE IMPROVEMENT WILL BE REQUIRED. THE CONTRACTOR SHALL MAINTAIN THE "UNEVEN PAVEMENT" SIGNS UNTIL THE RESURFACING OPERATIONS ARE COMPLETED.

IF AT ANY TIME THE SIGNS ARE IN PLACE BUT NOT APPLICABLE, THEY SHALL BE TURNED FROM THE VIEW OF MOTORISTS OR COVERED AS DIRECTED BY THE ENGINEER.

THE COST OF FURNISHING, ERECTING, MAINTAINING, AND REMOVING THE REQUIRED SIGNS SHALL BE INCLUDED IN THE CONTRACT.

ILLINOIS STANDARD

W8-1106



COLORS:

LEGEND AND BORDER - BLACK NON-REFLECTORIZED
BACKGROUND - ORANGE REFLECTORIZED

SIGN SIZE	DIMENSIONS							
	A	B	C	D	E	F	G	H
48X48	48.0	24.1	3.0	34.0	33.0	6.0	13.0	3.5

SIGN SIZE	SERIES LINES			MARGIN	BORDER	BLANK STD.
	1	2	3			
48X48	7C	7C	7C	0.8	1.2	B4-48D

ALL DIMENSIONS IN INCHES

NOTES:

PRIOR TO ALLOWING TRAFFIC ON ANY PORTION OF THE ROADWAY THAT HAS BEEN COLDMILLED, THE CONTRACTOR SHALL HAVE ERECTED "ROUGH GROOVED SURFACE" SIGNS THAT CONFORM TO THE ABOVE DETAILS. A MINIMUM OF ONE SIGN AT EACH END OF THE IMPROVEMENT WILL BE REQUIRED. THE CONTRACTOR SHALL MAINTAIN THE "ROUGH GROOVED SURFACE" SIGNS UNTIL THE COLDMILLED SURFACE IS COVERED WITH LEVELING BINDER OR SURFACE COURSE.

IF AT ANY TIME THE SIGNS ARE IN PLACE BUT NOT APPLICABLE, THEY SHALL BE TURNED FROM THE VIEW OF MOTORISTS OR COVERED AS DIRECTED BY THE ENGINEER.

THE COST OF FURNISHING, ERECTING, MAINTAINING, AND REMOVING THE REQUIRED SIGNS SHALL BE INCLUDED IN THE CONTRACT.

FILE NAME =	USER NAME = Stoverpg	DESIGNED -	REVISED -
ei:\pw...work\p\dtd\stoverpg\d8361384\DX...-CA00.dgn		DRAWN -	REVISED -
Default	PLOT SCALE = 100.0000 / in	CHECKED -	REVISED -
	PLOT DATE = 12/5/2013	DATE -	REVISED -

STATE OF ILLINOIS
DEPARTMENT OF TRANSPORTATION

DETAILS: TEMPORARY HOT-MIX ASPHALT TRANSITIONS,
UNEVEN LANES SIGN, ROUGH GROOVED SURFACE SIGN

SCALE: _____ SHEET _____ OF _____ SHEETS STA. _____ TO STA. _____

F.A.S. RTE.	SECTION	COUNTY	TOTAL SHEETS	SHEET NO.
1911	12RS-2	UNION	10	10
			CONTRACT NO. 78387	
(ILLINOIS) FED. AID PROJECT				