

STATE OF ILLINOIS
DEPARTMENT OF TRANSPORTATION
DIVISION OF HIGHWAYS

**PROPOSED
HIGHWAY PLANS**

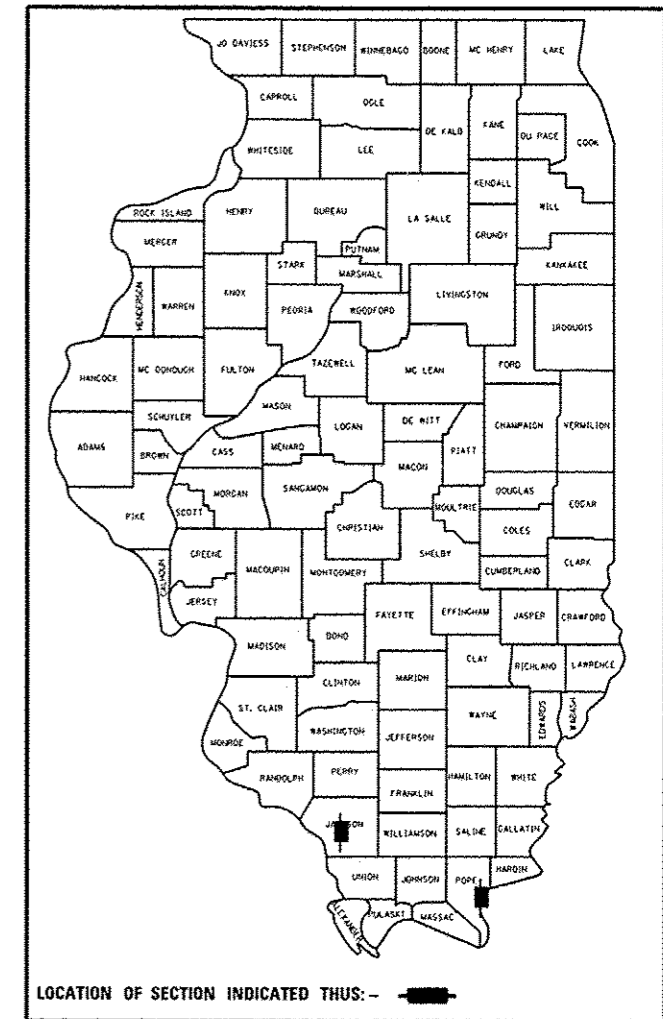
FAP RTE 42 (IL 13/127) & FAP RTE 885 (IL 146)
SECTION D9 PAVT PRESERVATION 2014-1

**MICROSURFACING & ULTRA THIN HMA SURFACE COURSE
JACKSON/POPE COUNTY**

F.A.R. RTE.	SECTION	COUNTY	TOTAL SHEETS	SHEET NO.
D9 PAVT PRESERV 2014-1	JACKSON/POPE	ILLINOIS	23	1
CONTRACT NO. 78366				

*FAP 42 (IL 13/127) & FAP 885 (IL 146)

D-99-035-13



FOR INDEX OF SHEETS, SEE SHEET NO. 3

IL 13/127

ADT: 7900 (2011)

PC - 7375

MU - 275

SU - 250

IL 146

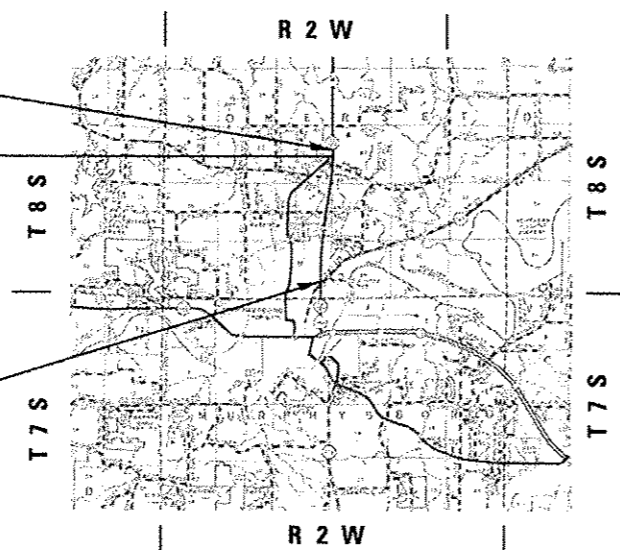
ADT: 2150 (2013)

PC - 1969

MU - 18

SU - 163

FAP 42 (IL 13/127)



PROP. IMPROVEMENT ENDS
STA. 160+26.81 (FAP 42)
EQ. STA. 495+30.60 (BK.) =
STA. 159+75.70 (AH.)

PROP. IMPROVEMENT BEGINS
STA. 369+00 (FAP 42)

EQ. STA. 495 + 30.60 (BK.) =
STA. 159 + 75.70 (AH.)

TOWNSHIP: MURPHYSBORO; GOLCONDA NO. 3

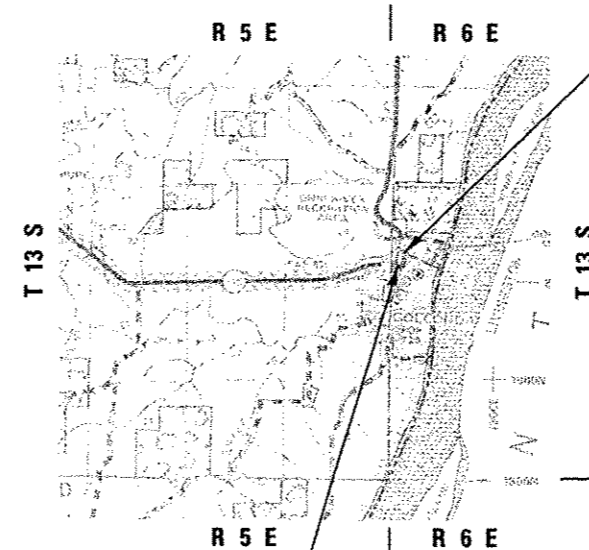
J.U.L.I.E.
JOINT UTILITY LOCATION INFORMATION FOR EXCAVATION
1-800-892-0123
OR 811

PROJECT ENGINEER CHARLES STEIN: 618-351-5210
PROJECT DESIGNER KATHI MCCORD: 618-351-5319

CONTRACT NO. 78366

C-99-037-13

FAP 885 (IL 146)



PROP. NORTH LEVEE
STA. 1665+00 (FAP 885)

PROP. WEST LEVEE
STA. 1261+88 (FAP 885)

FAP 42:
GROSS & NET LENGTH = 12,681.71 FT. = 2.40 MILE
FAP 885:
GROSS LENGTH & NET LENGTH = 83 FT. = 0.02 MILE
TOTAL GROSS & NET LENGTH = 12764.71 FT. = 2.42 MILES

STATE OF ILLINOIS
DEPARTMENT OF TRANSPORTATION
DIVISION OF HIGHWAYS

SUBMITTED December 4 20 13

Jeffrey J. Kamin
DEPUTY DIRECTOR OF HIGHWAYS, REGION ENGINEER

Jan 24 20 14
John D. Baranzelli, P.E.
acting ENGINEER OF DESIGN AND ENVIRONMENT

Jan 24 20 14
Omer Osman, P.E.
DIRECTOR OF HIGHWAYS, CHIEF ENGINEER

PRINTED BY THE AUTHORITY
OF THE STATE OF ILLINOIS