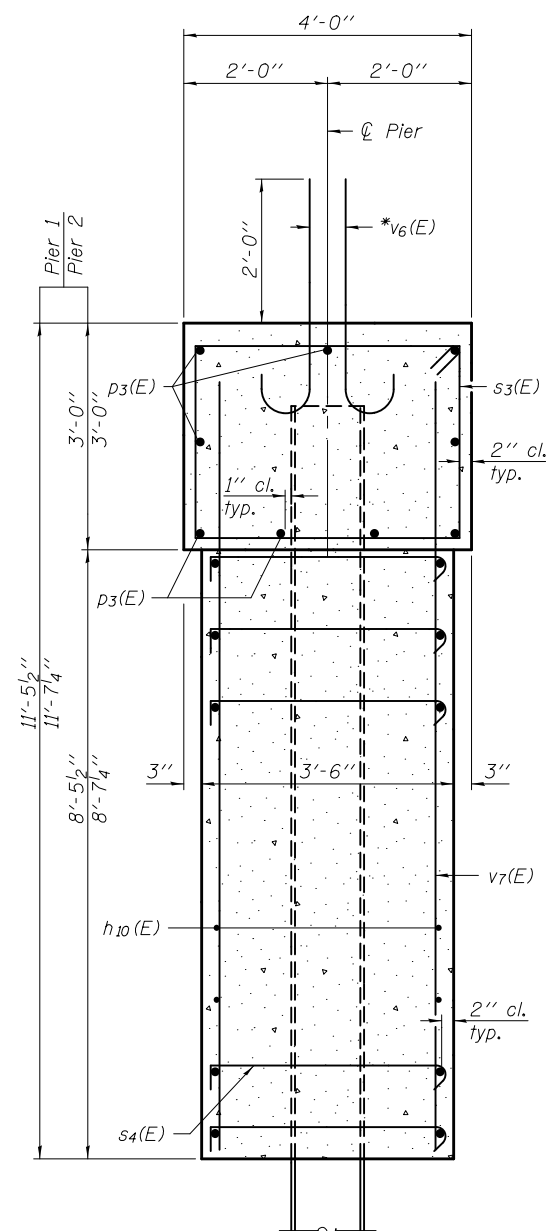


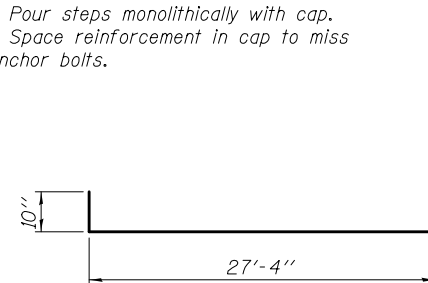
SECTION A-A



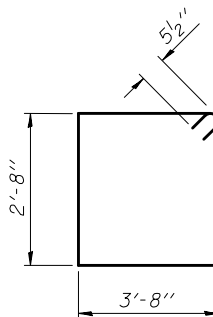
SECTION B-B

* Tilt #8 v₆(E) bars as required to maintain clearance.

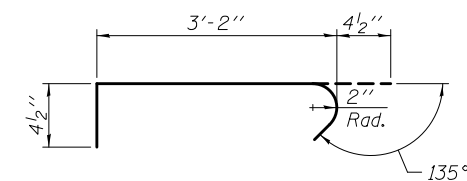
Notes:
Pour steps monolithically with cap.
Space reinforcement in cap to miss anchor bolts.



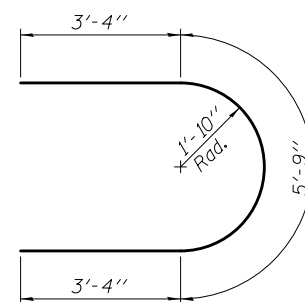
BAR h₁₀(E)



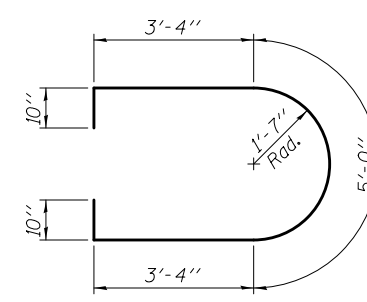
BAR s₃(E)



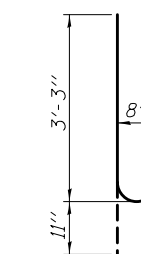
BAR s₄(E)



BAR u₂(E)



BAR u₃(E)



BAR v₆(E)

PILE DATA

Type: Steel HP 12x74
Nominal Required Bearing: 589 Kips
Allowable Resistance Available: 196 Kips
Est. Length: 58'
No. Production Piles: 7 (Each pier)
No. Test Piles: 0

TWO PIERS
BILL OF MATERIAL

Bar	No.	Size	Length	Shape
h ₁₀ (E)	72	#5	28'-2"	—
p ₃ (E)	36	#7	28'-2"	—
s ₃ (E)	92	#5	13'-7"	□
s ₄ (E)	252	#4	3'-11"	U
u ₂ (E)	12	#6	12'-5"	U
u ₃ (E)	36	#6	13'-4"	U
v ₆ (E)	60	#8	4'-2"	—
v ₇ (E)	228	#5	10'-9"	—
Concrete Structures		Cu. Yd.	172.0	
Reinforcement Bars, Epoxy Coated		Pound	10,320	
Cofferdam Excavation		Cu. Yd.	215.4	
Furnishing Steel Piles HP 12x74		Foot	812	
Driving Piles		Foot	812	
Cofferdam (Type I) Location 1		Each	1	
Cofferdam (Type I) Location 2		Each	1	

DESIGNED - MARK D. SHAFFER
CHECKED - STEPHEN M. RYAN
DRAWN - MICHAEL B. MOSSMAN
CHECKED - F.T. / G.R.A.

EXAMINED
PASSED
ACTING ENGINEER OF BRIDGE DESIGN
ACTING ENGINEER OF BRIDGES AND STRUCTURES

DATE - JANUARY 24, 2014
REVISED
REVISED

STATE OF ILLINOIS
DEPARTMENT OF TRANSPORTATION

PIERS
STRUCTURE NO. 100 - 0081

SHEET NO. 23 OF 26 SHEETS

F.A.U. RTE.	SECTION	COUNTY	TOTAL SHEETS	SHEET NO.
9588	39B-2	WILLIAMSON	224	116
CONTRACT NO. 78277				

ILLINOIS FED. AID PROJECT