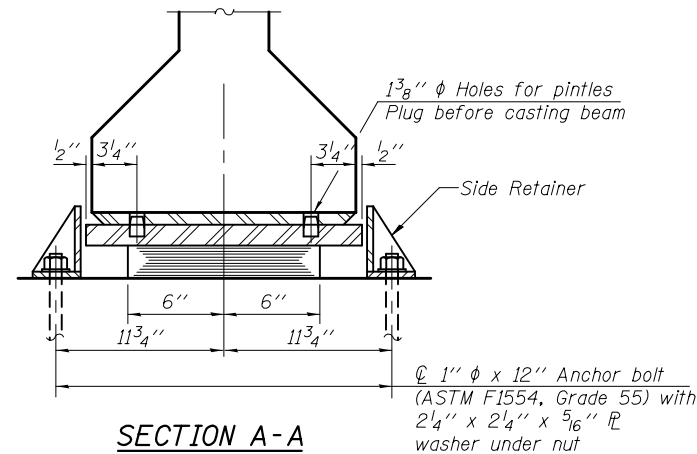
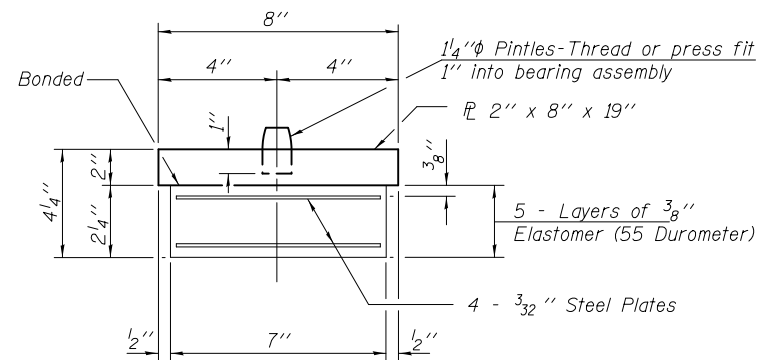


SECTION AT ABUT.

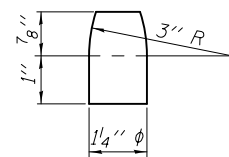


SECTION A-A

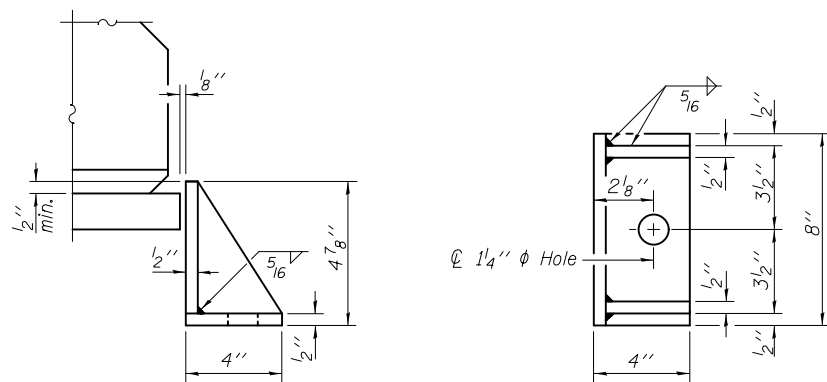
TYPE I ELASTOMERIC EXP. BRG.



BEARING ASSEMBLY



PINTLE



SIDE RETAINER

Equivalent rolled angle with stiffeners will be allowed in lieu of welded plates.

Notes:

- Anchor bolts shall be ASTM F1554 all-thread (or an Engineer-approved alternate material) of the grade(s) and diameter(s) specified. The corresponding specified grade of AASHTO M314 anchor bolts may be used in lieu of ASTM F1554.
- Anchor bolts for side retainers may be cast in place or installed in holes drilled after supporting members are in place and prior to pouring the deck.
- Drilled and set anchor bolts shall be installed according to Article 521.06 of the Standard Specifications.
- The side retainers and the top elastomeric plates shall be galvanized after shop fabrication according to AASHTO M 111. Side retainers required for the elastomeric bearing assembly shall be included in the cost of Elastomeric Bearing Assembly, Type I.
- Anchor bolt assemblies shall be galvanized according to Article 1006.09 of the Standard Specifications.
- See sheet 18 of 26 for additional details of plate cast with beam.
- The structural steel bearing plates of the bearing assembly shall conform to the requirements of AASHTO M 270, Grade 50.
- All (embedded and separate) bearing plates, side retainers, anchor bolts, nuts, washers and pintles shall be galvanized according to AASHTO M111 or M232 as applicable.
- The anchor bolt sizes and grades shown constitute a calculated seismic structural fuse. Substitution of higher diameter and/or grade anchor bolts will not be allowed.

BILL OF MATERIAL

Item	Unit	Total
Elastomeric Bearing Assembly, Type I	Each	12
Anchor Bolts, 1"	Each	24

PI-2E-1

1-27-12

DESIGNED - MARK D. SHAFFER	EXAMINED - <i>Joanne F. Schaff</i> ACTING ENGINEER OF BRIDGE DESIGN	DATE - JANUARY 24, 2014
CHECKED - STEPHEN M. RYAN	PASSED - <i>Carl Berger</i> ACTING ENGINEER OF BRIDGES AND STRUCTURES	REVISED
DRAWN - MICHAEL B. MOSSMAN		REVISED
CHECKED - F.T. / G.R.A.		

STATE OF ILLINOIS
DEPARTMENT OF TRANSPORTATION

BEARING DETAILS
STRUCTURE NO. 100 - 0081

SHEET NO. 19 OF 26 SHEETS

F.A.U. RTE.	SECTION	COUNTY	TOTAL SHEETS	SHEET NO.
9588	39B-2	WILLIAMSON	224	112
CONTRACT NO. 78277				
ILLINOIS FED. AID PROJECT				