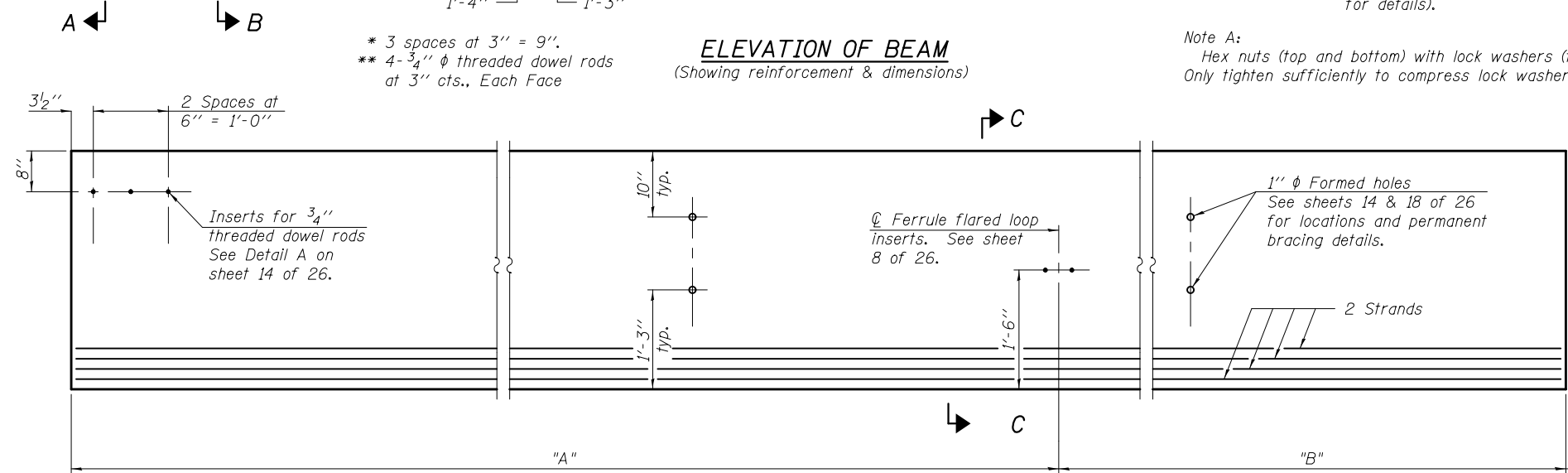


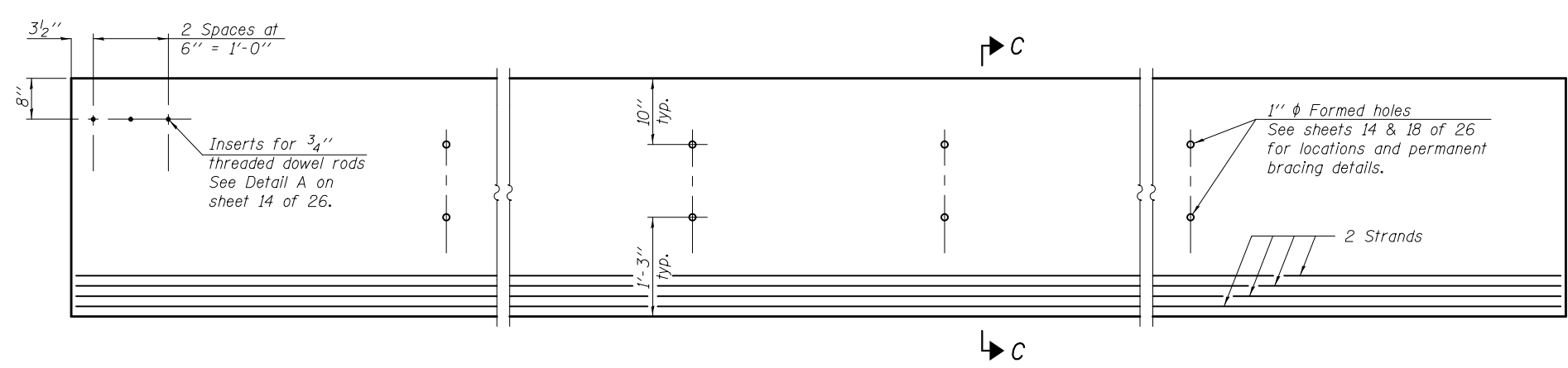
ELEVATION OF BEAM
(Showing reinforcement & dimensions)

Note A:
Hex nuts (top and bottom) with lock washers (top).
Only tighten sufficiently to compress lock washers.

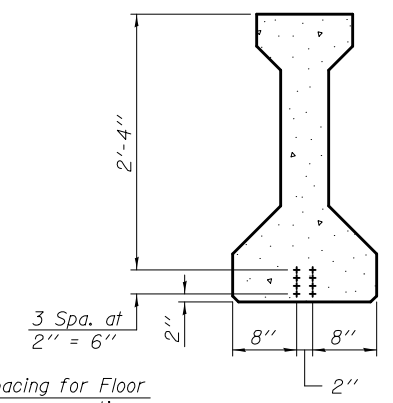
* 3 spaces at 3" = 9".
** 4-3/4" φ threaded dowel rods at 3" cts., Each Face



ELEVATION OF BEAMS 1 & 6
(Showing prestressing steel, inserts, and formed holes)



ELEVATION OF BEAMS 2 THRU 5
(Showing prestressing steel, inserts, and formed holes)



SECTION C-C

*****BAR LIST
ONE BEAM ONLY**

Bar	No.	Size	Length	Shape
G ₁	35	#4	7'-7"	∩ L
G ₂	8	#4	5'-8"	∩
G ₃	6	#5	20'-11"	—
G ₄	38	#3	4'-1"	∩
G ₆	2	#8	6'-6"	U

***For information only

Notes:
See sheet 18 of 26 for additional details and Bill of Material.
Required release strength, f'ci, shall be 5,000 psi.

Location	"A"	"B"
Beam 1	24'-11 1/2"	15'-0 1/2"
Beam 6	28'-0 1/2"	11'-11 1/2"

PI-4-36 7-1-10

DESIGNED - MARK D. SHAFFER	EXAMINED - <i>Jaime F. Joffe</i> ACTING ENGINEER OF BRIDGE DESIGN	DATE - JANUARY 24, 2014
CHECKED - STEPHEN M. RYAN	PASSED - <i>Carl Perry</i> ACTING ENGINEER OF BRIDGES AND STRUCTURES	REVISED
DRAWN - MICHAEL B. MOSSMAN		REVISED
CHECKED - F.T. / G.R.A.		

**STATE OF ILLINOIS
DEPARTMENT OF TRANSPORTATION**

**36" PPC I-BEAM (SPAN 1)
STRUCTURE NO. 100 - 0081**

SHEET NO. 15 OF 26 SHEETS

F.A.U. RTE.	SECTION	COUNTY	TOTAL SHEETS	SHEET NO.
9588	39B-2	WILLIAMSON	224	108
ILLINOIS FED. AID PROJECT			CONTRACT NO. 78277	