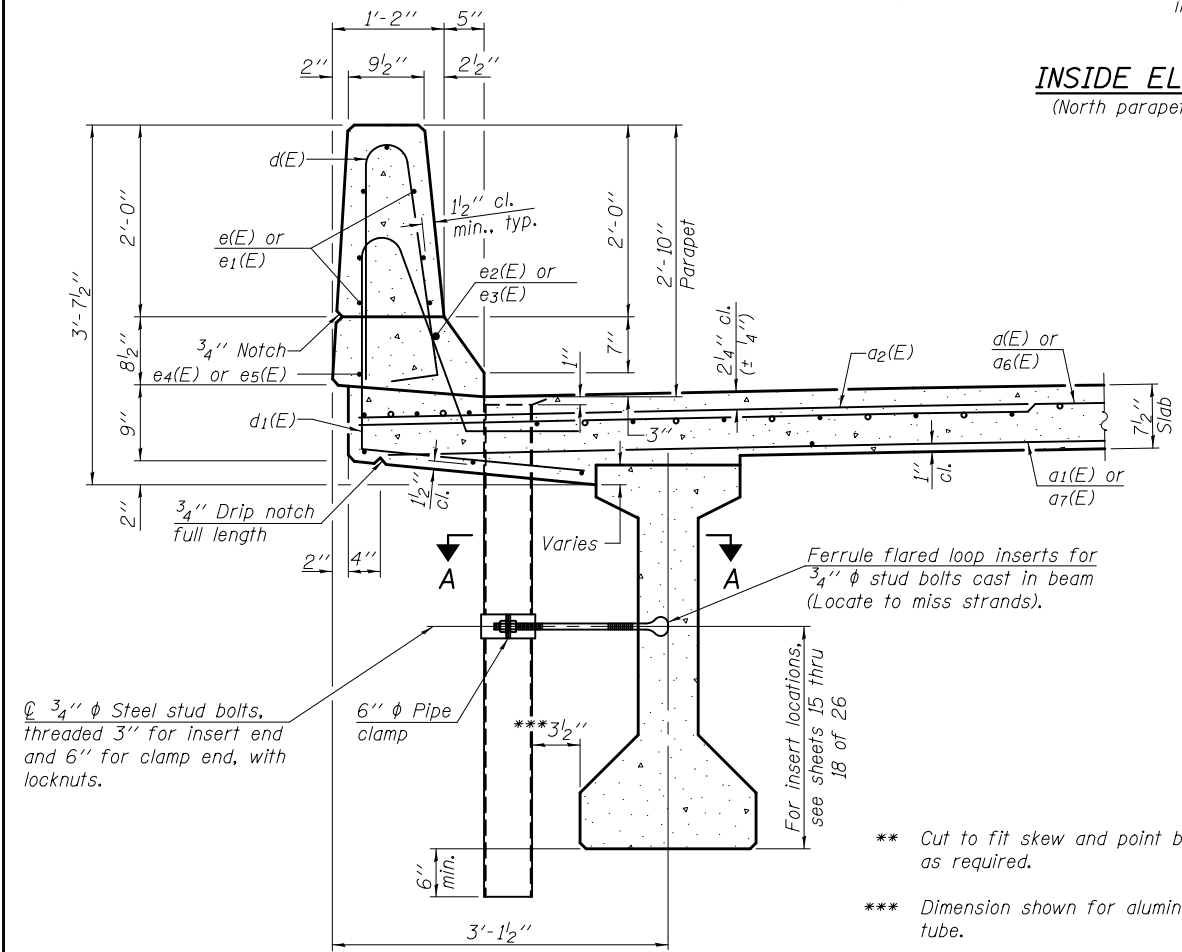
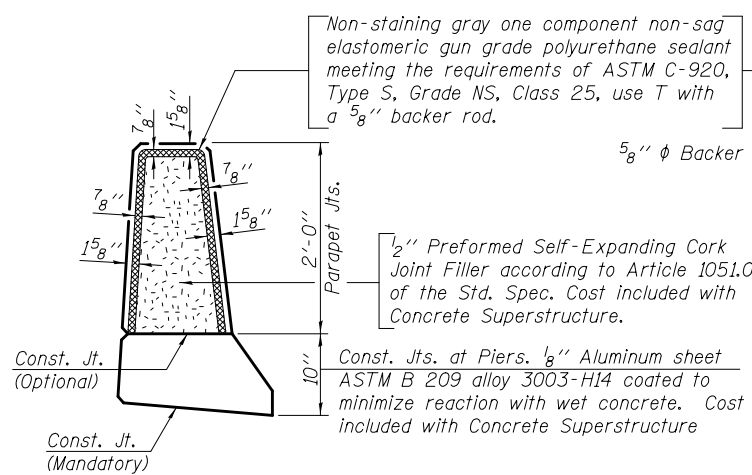


INSIDE ELEVATION OF PARAPET
(North parapet shown, South parapet similar)

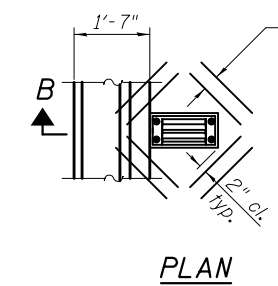
MINIMUM BAR LAP
#4 Bar = 2'-0"



SECTION THRU PARAPET



PARAPET JOINT DETAILS



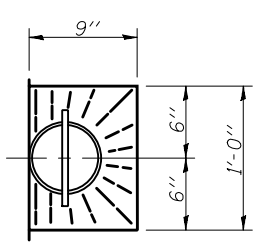
PLAN

SUPERSTRUCTURE BILL OF MATERIAL

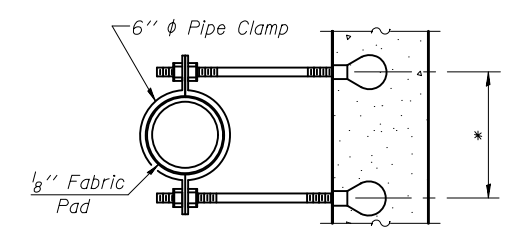
Bar	No.	Size	Length	Shape
a(E)	161	#5	38'-7"	—
a1(E)	116	#5	37'-4"	—
a2(E)	232	#6	6'-6"	—
a3(E)	30	#6	8'-2"	—
a4(E)	4	#6	24'-3"	—
a5(E)	16	#7	29'-4"	—
a6(E)	66	#5	37'-0"	—
a7(E)	47	#5	36'-5"	—
a8(E)	16	#5	1'-6"	—
b(E)	168	#5	32'-10"	—
b1(E)	78	#6	16'-4"	—
b2(E)	205	#5	26'-10"	—
d(E)	272	#5	5'-7"	—
d1(E)	272	#5	7'-10"	—
e(E)	56	#4	20'-6"	—
e1(E)	28	#4	20'-1"	—
e2(E)	4	#8	41'-4"	—
e3(E)	2	#8	40'-6"	—
e4(E)	8	#4	21'-8"	—
e5(E)	2	#4	40'-6"	—
m(E)	40	#4	8'-4"	—
m1(E)	20	#6	6'-11"	—
m2(E)	12	#8	5'-6"	—
s(E)	50	#4	11'-0"	—
x(E)	60	#6	8'-1"	—
x1(E)	70	#5	4'-1"	—
Reinforcement Bars, Epoxy Coated		Lbs.	40,270	
Concrete Superstructure		Cu. Yds.	191.0	

Bars indicated thus 1 x 2-#8 etc. indicates 1 line of bars with 2 lengths per line.

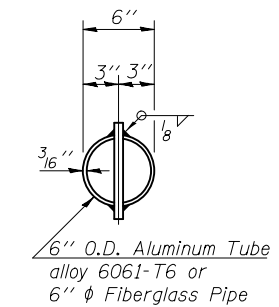
Notes:
Fiberglass pipe shall conform to ASTM D2996, with short-time rupture strength hoop tensile stress of 30,000 p.s.i. minimum.
The exterior surfaces of the floor drains shall be coated or pigmented by the manufacturer with a color that matches the concrete.
The clamping device and inserts shall be galvanized according to AASHTO M 232. Cost of clamping device and inserts included with Floor Drains.
Cut longitudinal reinforcement to clear drainage scuppers.



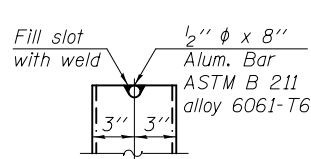
TOP PLAN



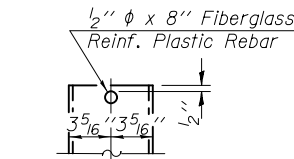
SECTION A-A
*Dimension as required by Pipe Clamp



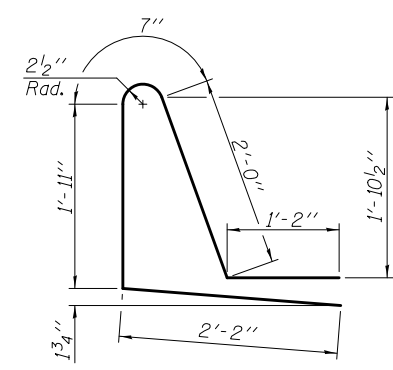
TOP PLAN
(Showing Aluminum Tube)



ALUMINUM TUBE



FIBERGLASS PIPE



BAR d1(E)

DESIGNED - MARK D. SHAFFER	EXAMINED - <i>Jaime F. Joffe</i>	DATE - JANUARY 24, 2014
CHECKED - STEPHEN M. RYAN	PASSED - <i>Carl Kasper</i>	REVISOR
DRAWN - MICHAEL B. MOSSMAN	ACTING ENGINEER OF BRIDGES AND STRUCTURES	REVISOR
CHECKED - F.T. / G.R.A.		

STATE OF ILLINOIS
DEPARTMENT OF TRANSPORTATION

SUPERSTRUCTURE DETAILS
STRUCTURE NO. 100 - 0081

SHEET NO. 8 OF 26 SHEETS

F.A.U. RTE.	SECTION	COUNTY	TOTAL SHEETS	SHEET NO.
9588	39B-2	WILLIAMSON	224	101
				CONTRACT NO. 78277

ILLINOIS FED. AID PROJECT