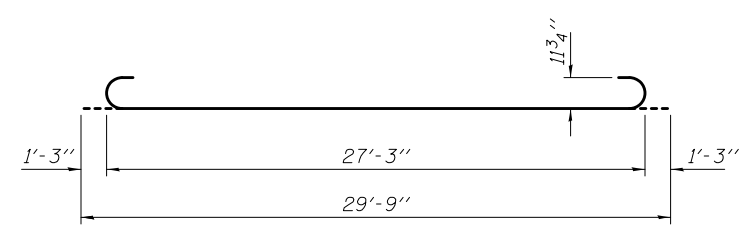
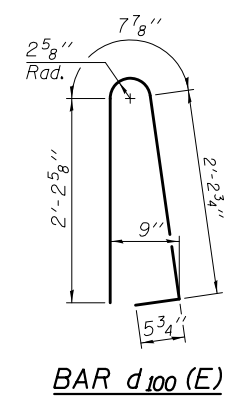
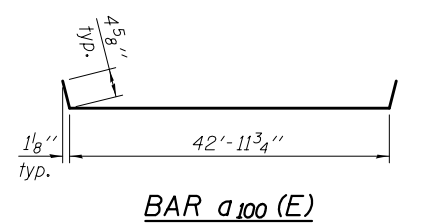


Notes:  
 See sheet 10 of 18 for Detail A and View B-B.  
 Approach slab and parapet concrete shall be paid for as Concrete Superstructure.  
 Approach footing concrete shall be paid for as Concrete Structures.  
 Reinforcement shall be paid for as Reinforcement Bars, Epoxy Coated.  
 For v(E) bar details, see sheet 8 of 18.  
 The approach footing maximum applied service bearing pressure ( $Q_{max}$ ) = 2.0 ksf.  
 For bar splicer details, see sheet 17 of 18.  
 Cost of excavation for approach footing included with Concrete Structures.  
 For Granular Backfill and drainage treatment details, see sheet 2 of 18.  
 For additional parapet details, see sheet 8 of 18.

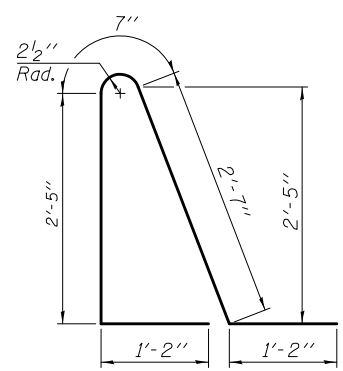
\*Tilt #9 b<sub>101</sub> (E) bars as required to maintain clearance.  
 \*\*\*Cost included with Concrete Superstructure.



BAR b<sub>101</sub> (E)



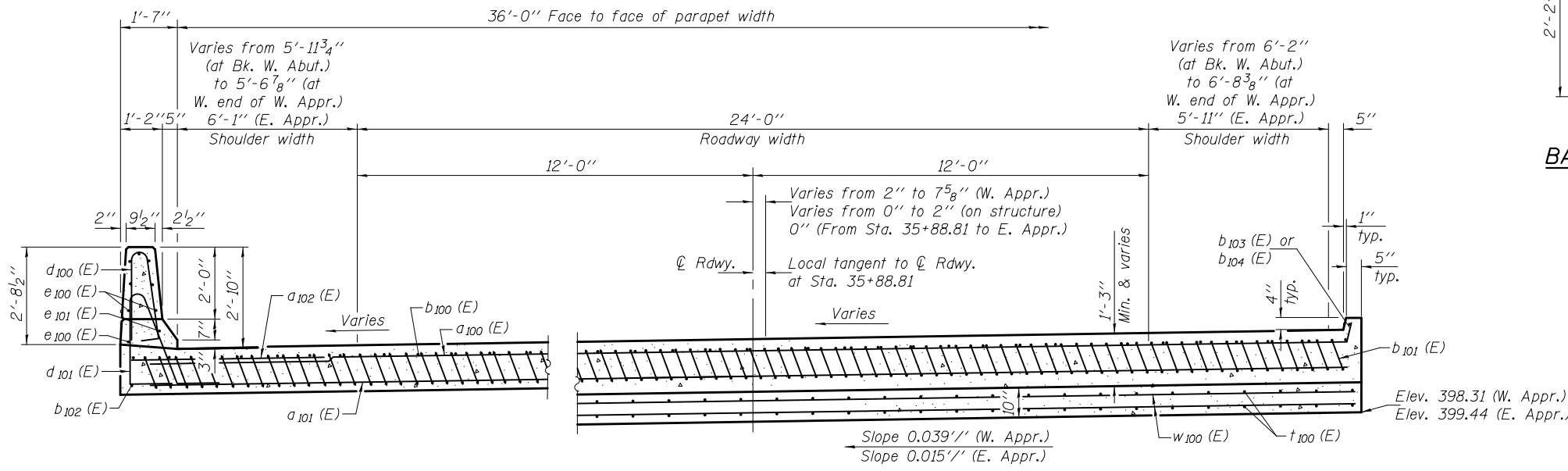
BAR a<sub>100</sub> (E)



BAR d<sub>101</sub> (E)

**TWO APPROACHES  
 BILL OF MATERIAL**

Bar	No.	Size	Length	Shape
a <sub>100</sub> (E)	50	#4	42'-9"	—
a <sub>101</sub> (E)	92	#5	43'-4"	—
a <sub>102</sub> (E)	48	#4	6'-6"	—
b <sub>100</sub> (E)	62	#4	29'-8"	—
b <sub>101</sub> (E)	182	#9	29'-9"	—
b <sub>102</sub> (E)	4	#4	14'-8"	—
b <sub>103</sub> (E)	2	#4	14'-4"	—
b <sub>104</sub> (E)	2	#4	15'-1"	—
d <sub>100</sub> (E)	68	#5	5'-7"	—
d <sub>101</sub> (E)	68	#5	7'-11"	—
e <sub>100</sub> (E)	32	#4	14'-8"	—
e <sub>101</sub> (E)	4	#8	14'-8"	—
t <sub>100</sub> (E)	160	#4	11'-2"	—
w <sub>100</sub> (E)	80	#5	43'-4"	—
Concrete Superstructure		Cu. Yd.	114.3	
Concrete Structures		Cu. Yd.	27.0	
Reinforcement Bars, Epoxy Coated		Pound	31750	

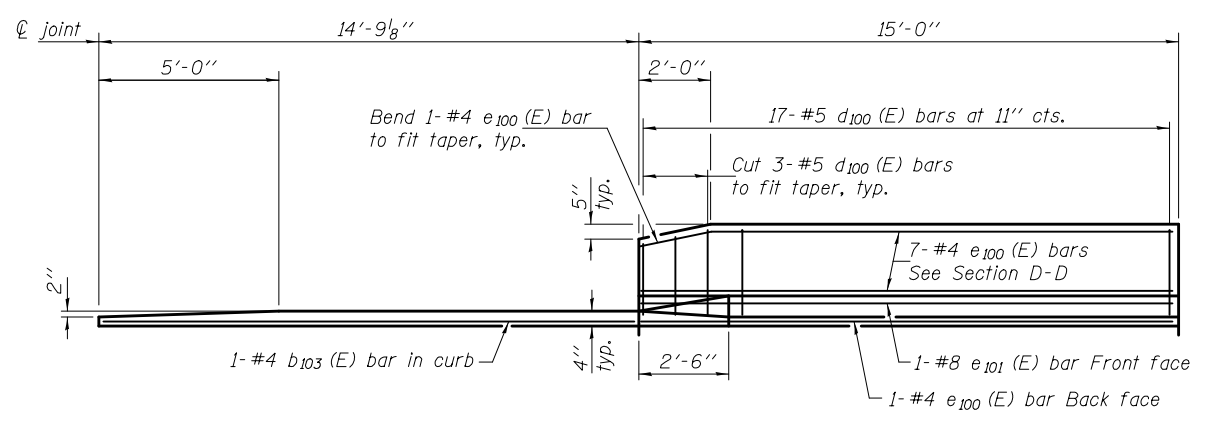


**SECTION D-D**

(See Plan for dimensions not shown)

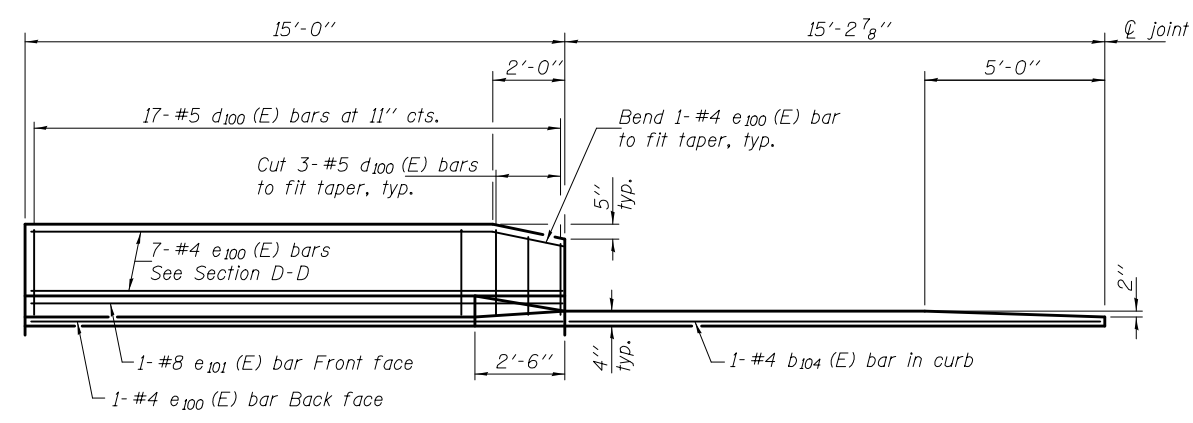
**NEAR ABUTMENT**

**AT APPROACH FOOTING**



**VIEW E-E**

(Dimensions measured along inside of curbs)



**VIEW G-G**

(Dimensions measured along inside of curbs)

DESIGNED - Curt M. Evoy	EXAMINED - <i>Joanne F. [Signature]</i>	DATE - JANUARY 24, 2014
CHECKED - Phillip Coppernoll	PASSED - <i>Carl [Signature]</i>	REVISED
DRAWN - h.t. duong	ACTING ENGINEER OF BRIDGES AND STRUCTURES	REVISED
CHECKED - FT/GRA		

**STATE OF ILLINOIS  
 DEPARTMENT OF TRANSPORTATION**

**BRIDGE APPROACH SLAB DETAILS  
 STRUCTURE NO. 100-0080**

SHEET NO. 12 OF 18 SHEETS

F.A.U. RT.E.	SECTION	COUNTY	TOTAL SHEETS	SHEET NO.
9588	39B-1	WILLIAMSON	224	87
ILLINOIS FED. AID PROJECT			CONTRACT NO. 78277	