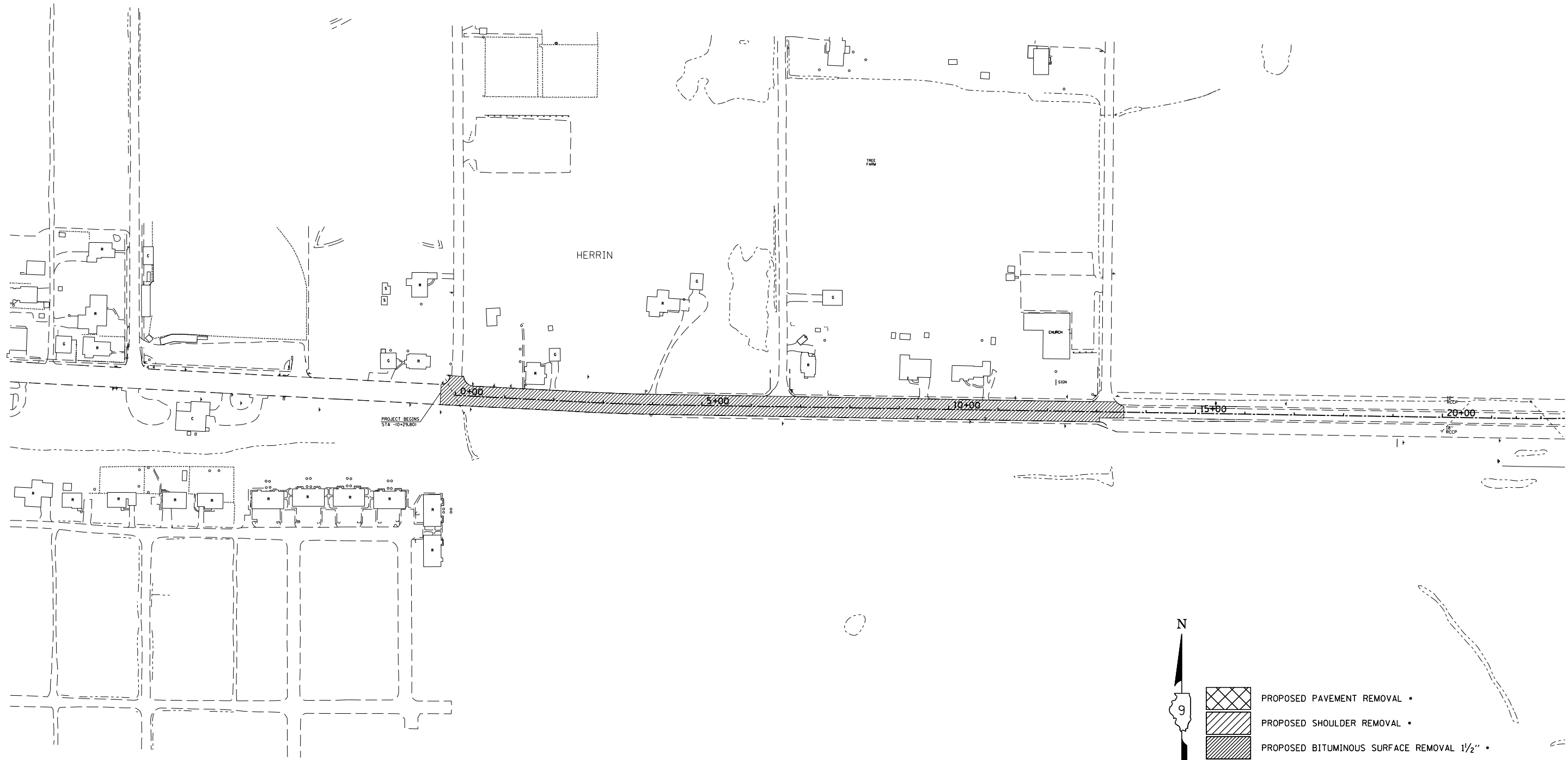

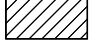

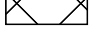
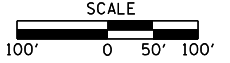


F.A.U. RTE.	SECTION	COUNTY	TOTAL SHEETS	SHEET NO
9588•	39(R-1,B-1,B-2)	WILLIAMSON	224	61

STA.	TO STA.
FED. ROAD DIST. NO.	ILLINOIS FED. AID PROJECT



-  PROPOSED PAVEMENT REMOVAL •
-  PROPOSED SHOULDER REMOVAL •
-  PROPOSED BITUMINOUS SURFACE REMOVAL 1/2" •
-  PROPOSED TREE REMOVAL
- SEE SCHEDULE FOR STATIONING



12/22/2013
 P:\work\98729\98729-sht-ml.dgn
 REF
 REF
 REF

REMOVAL PLAN