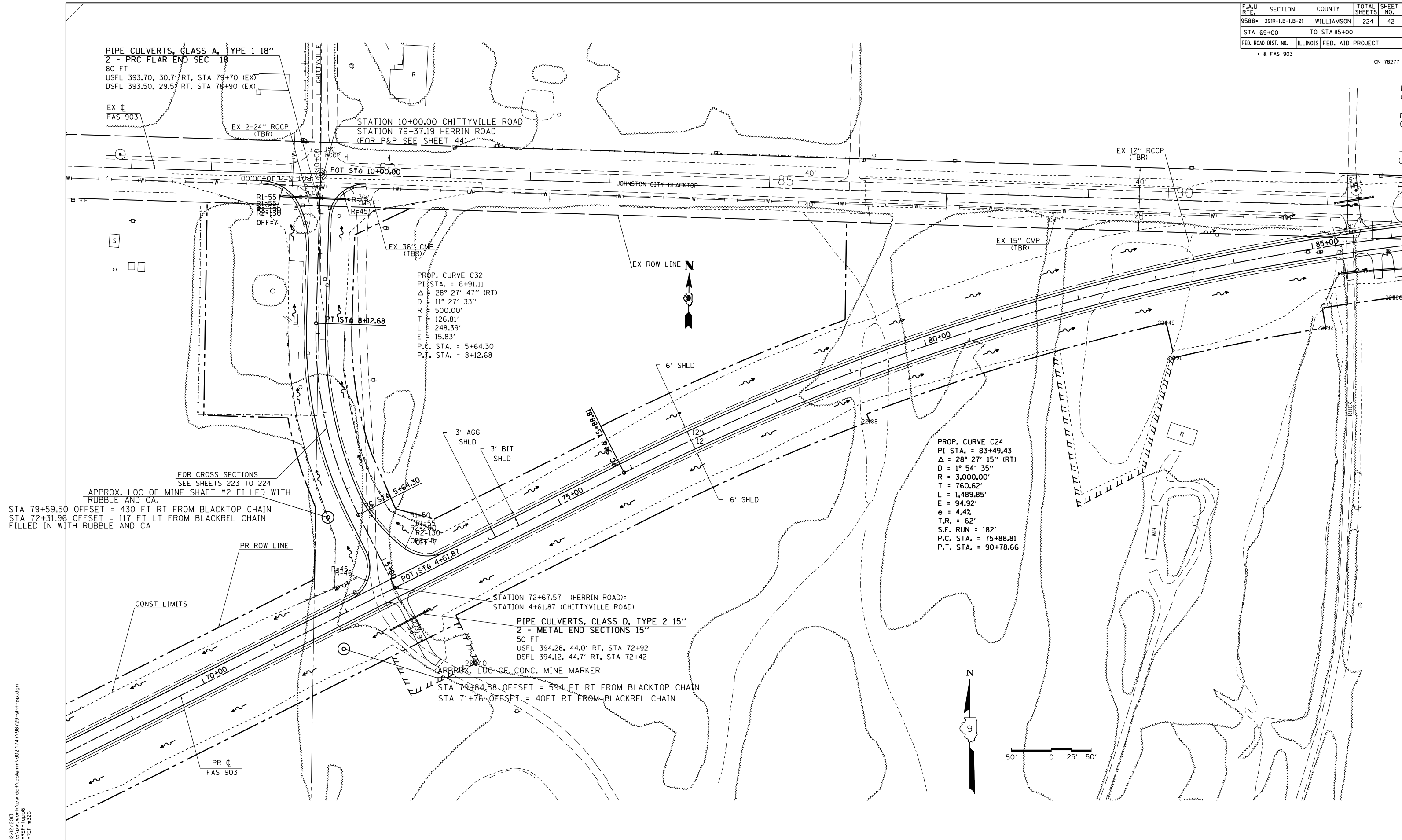


F.A.U. RTE.	SECTION	COUNTY	TOTAL SHEETS	SHEET NO.
9588*	391R-1,B-1,B-2)	WILLIAMSON	224	42
STA 69+00		TO STA 85+00		
FED. ROAD DIST. NO.	ILLINOIS FED. AID PROJECT			
• & FAS 903				
CN 78277				



PIPE CULVERTS, CLASS A, TYPE 1 18"
2 - PRC FLAR END SEC 18"
 80 FT
 USFL 393.70, 30.7' RT, STA 79+70 (EX)
 DSFL 393.50, 29.5' RT, STA 78+90 (EX)

PROP. CURVE C32
 P.I. STA. = 6+91.11
 $\Delta = 28^\circ 27' 47''$ (RT)
 D = $11^\circ 27' 33''$
 R = 500.00'
 T = 126.81'
 L = 248.39'
 E = 15.83'
 P.C. STA. = 5+64.30
 P.T. STA. = 8+12.68

PROP. CURVE C24
 P.I. STA. = 83+49.43
 $\Delta = 28^\circ 27' 15''$ (RT)
 D = $1^\circ 54' 35''$
 R = 3,000.00'
 T = 760.62'
 L = 1,489.85'
 E = 94.92'
 e = 4.4%
 T.R. = 62'
 S.E. RUN = 182'
 P.C. STA. = 75+88.81
 P.T. STA. = 90+78.66

PIPE CULVERTS, CLASS D, TYPE 2 15"
2 - METAL END SECTIONS 15"
 50 FT
 USFL 394.28, 44.0' RT, STA 72+92
 DSFL 394.12, 44.7' RT, STA 72+42

FOR CROSS SECTIONS
 SEE SHEETS 223 TO 224
 APPROX. LOC OF MINE SHAFT #2 FILLED WITH
 RUBBLE AND CA.
 STA 79+59.50 OFFSET = 430 FT RT FROM BLACKTOP CHAIN
 STA 72+31.96 OFFSET = 117 FT LT FROM BLACKREL CHAIN
 FILLED IN WITH RUBBLE AND CA

APPROX. LOC OF CONC. MINE MARKER
 STA 79+84.58 OFFSET = 594 FT RT FROM BLACKTOP CHAIN
 STA 71+76 OFFSET = 40 FT RT FROM BLACKREL CHAIN

12/2/2013
 C:\work\p1\work\1\colenn\1\d027174\38729-sh1-pp.dgn
 -PR-326
 -REF-m326



PLAN HERRIN ROAD STA 69+00 TO STA 85+00