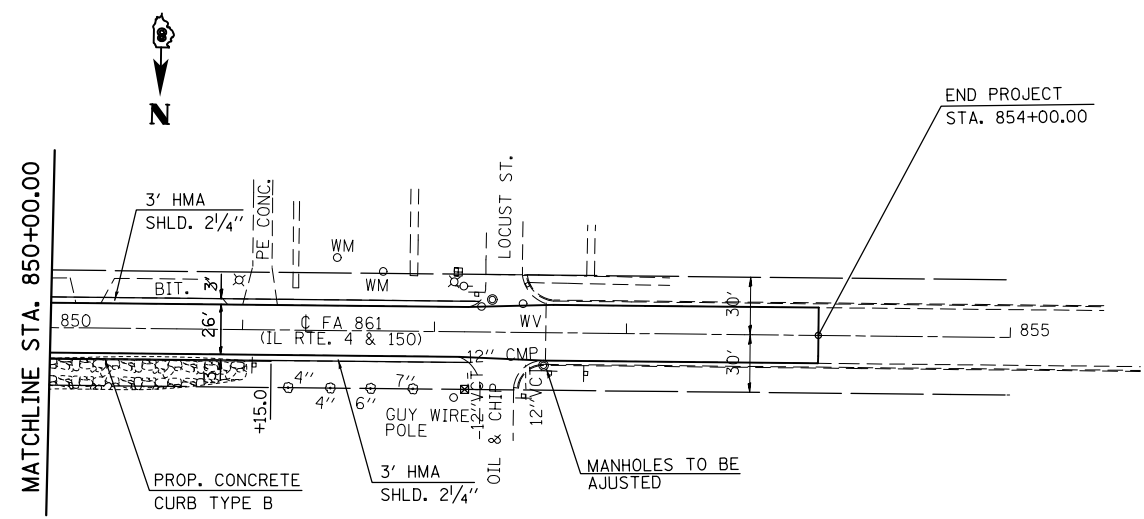
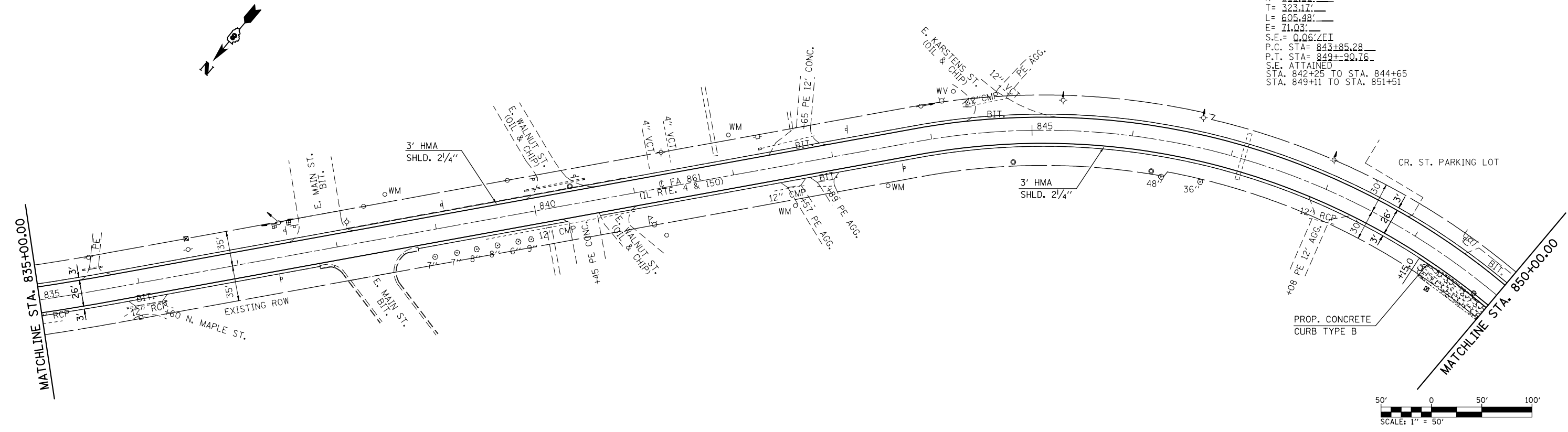


CURVE
 P.I. STA= 847+08.45
 Δ = 49°35'03"
 D= 08°11'21"
 R= 629.66'
 T= 323.17'
 L= 605.48'
 E= 71.03'
 S.E.= 0.0642EI
 P.C. STA= 843+85.28
 P.T. STA= 849+90.76
 S.E. ATTAINED
 STA. 842+25 TO STA. 844+65
 STA. 849+11 TO STA. 851+51



FILE NAME =	USER NAME = #USER*	DESIGNED -	REVISED -
#FILE#		DRAWN -	REVISED -
	PLOT SCALE = #SCALE*	CHECKED -	REVISED -
#MODELNAME#	PLOT DATE = #DATE*	DATE -	REVISED -

**STATE OF ILLINOIS
 DEPARTMENT OF TRANSPORTATION**

PLAN SHEET

SCALE: 1" = 50' SHEET 7 OF 7 SHEETS STA. 835+00.00 TO STA. 855+00.00

F.A.P. RTE.	SECTION	COUNTY	TOTAL SHEETS	SHEET NO.
861	(110,111)RS-3	RANDOLPH	23	16
CONTRACT NO. 76G65				
ILLINOIS FED. AID PROJECT				