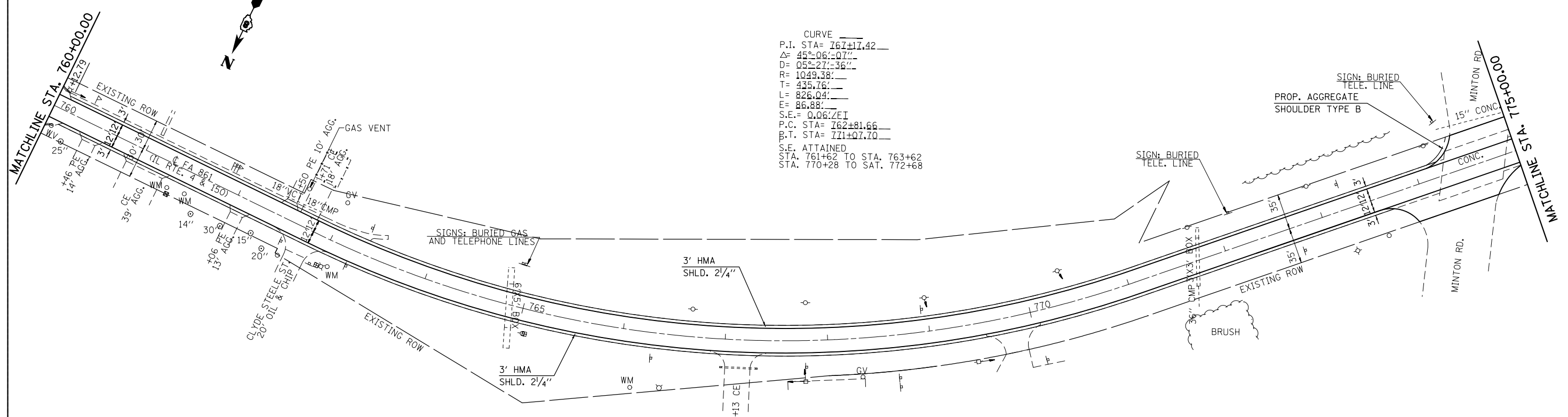
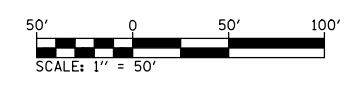
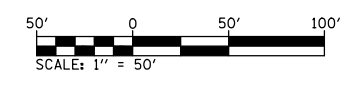


NOTE: P.G. LINE TRANSITIONS:
 STA. 757+45 4' LT. OF C TO
 STA. 759+45 4' LT. OF C



CURVE _____
 P.I. STA= 767+17.42
 Δ = 45°-06'-07"
 D= 05°-27'-36"
 R= 1049.38'
 T= 435.76'
 L= 826.04'
 E= 86.88'
 S.E.= 0.06% E
 P.C. STA= 762+81.66
 P.T. STA= 771+07.70
 S.E. ATTAINED
 STA. 761+62 TO STA. 763+62
 STA. 770+28 TO STA. 772+68



FILE NAME = *FILE#	USER NAME = *USER*	DESIGNED - _____	REVISED - _____	STATE OF ILLINOIS DEPARTMENT OF TRANSPORTATION	PLAN SHEET			F.A.P. RTE.	SECTION	COUNTY	TOTAL SHEETS	SHEET NO.		
	PLOT SCALE = *SCALE*	DRAWN - _____	REVISED - _____		SCALE: 1" = 50'	SHEET 4	OF 7 SHEETS	STA. 745+00.00	TO STA. 775+00.00	861	(110,111)RS-3	RANDOLPH	23	13
	PLOT DATE = *DATE*	CHECKED - _____	REVISED - _____											
		DATE - _____	REVISED - _____											
CONTRACT NO. 76G65												ILLINOIS FED. AID PROJECT		