

STATE OF ILLINOIS  
DEPARTMENT OF TRANSPORTATION  
DIVISION OF HIGHWAYS

**PROPOSED  
HIGHWAY PLANS**

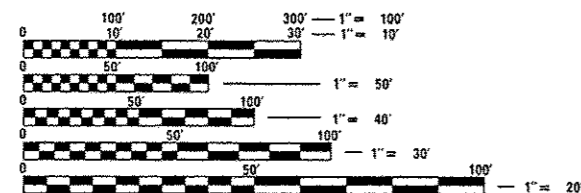
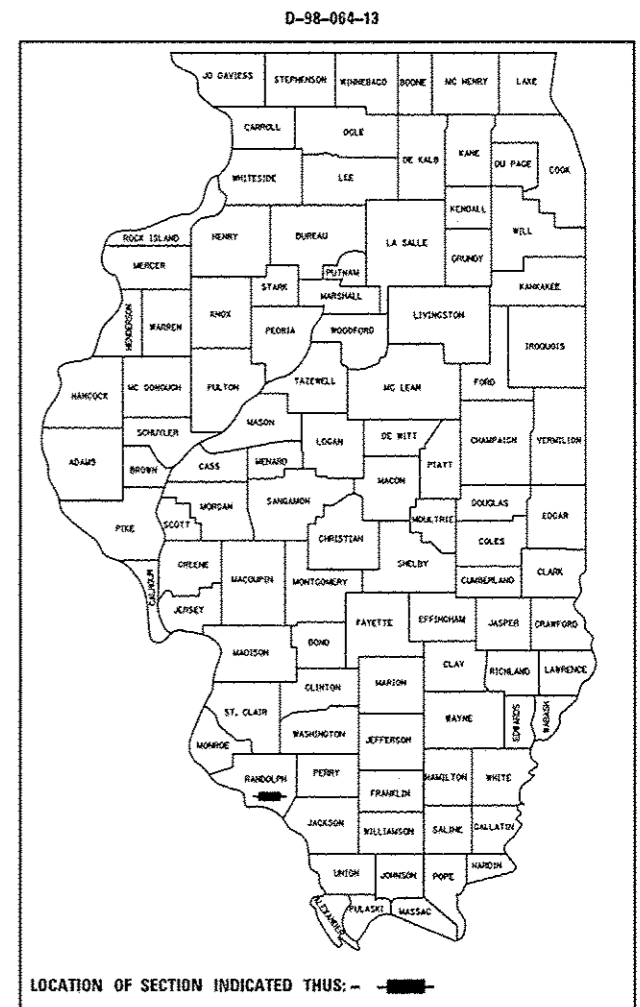
FAP ROUTE 861 (IL 4 / 150)  
SECTION (110,111)RS-3  
RESURFACING (3P) - IL 4/150 FROM LOCUST ST  
IN STEELEVILLE TO PERRY COUNTY LINE  
RANDOLPH COUNTY

C-98-066-13

PROJECT ACF-0861(021)

F.A.P. RTE.	SECTION	COUNTY	TOTAL SHEETS	SHEET NO.
861	(110,111)RS-3	RANDOLPH	23	1
		ILLINOIS	CONTRACT NO. 76G65	

FOR INDEX OF SHEETS, SEE SHEET NO. 2

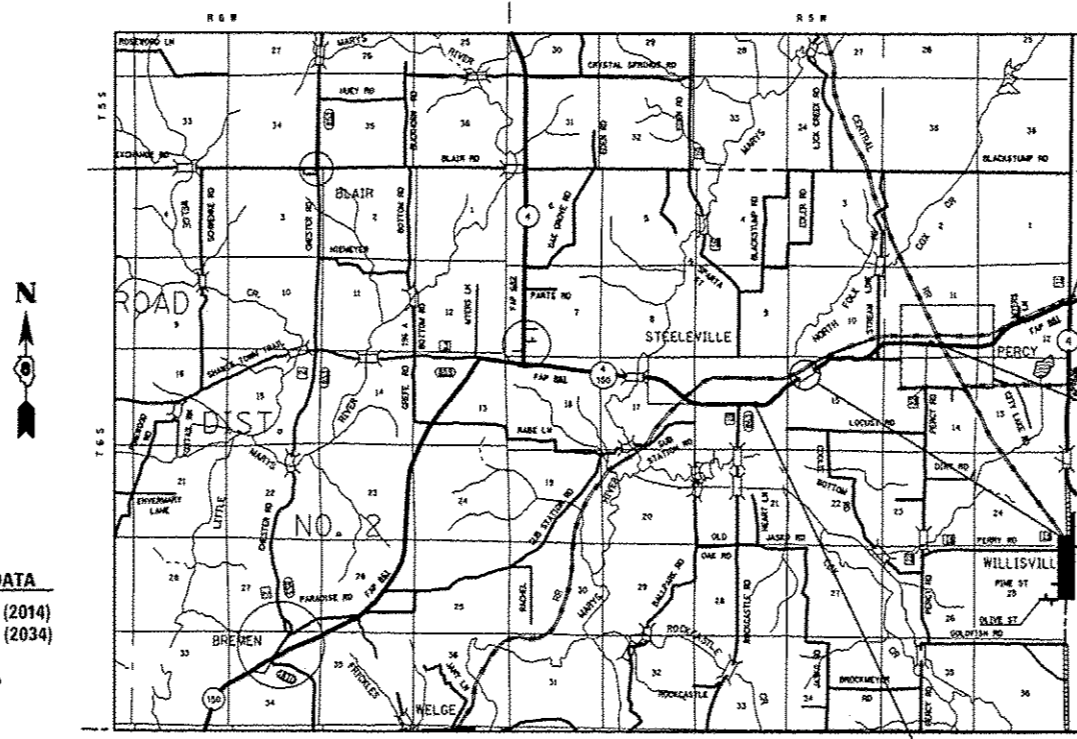


FULL SIZE PLANS HAVE BEEN PREPARED USING STANDARD ENGINEERING SCALES. REDUCED SIZED PLANS WILL NOT CONFORM TO STANDARD SCALES. IN MAKING MEASUREMENTS ON REDUCED PLANS, THE ABOVE SCALES MAY BE USED.

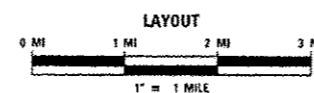
J.U.L.I.E.  
JOINT UTILITY LOCATION INFORMATION FOR EXCAVATION  
1-800-892-0123  
OR 811

PROJECT ENGINEER: TIM PADGETT (618) 346-3325  
SQUAD LEADER: PHIL COPPERNOLL (618) 346-3480

CONTRACT NO. 76G65



TRAFFIC DATA  
ADT: 4900 (2014)  
6000 (2034)  
SU: 7.2%  
MU: 18.0%



GROSS LENGTH = 19,107 FT. = 3.62 MILES  
NET LENGTH = 19,074 FT. = 3.61 MILES

PROJECT BEGINS  
STA 661+00.00  
LAT: 38.0226  
LONG: -89.5937

RAILROAD OMISSION  
STA 739+41.00 TO  
STA 739+74.00

BRIDGE OMISSION  
STA 823+82.00 TO  
STA 825+75.00

PROJECT ENDS  
STA 854+00.00  
LAT: 38.0071  
LONG: -89.6538

STATE OF ILLINOIS  
DEPARTMENT OF TRANSPORTATION  
DIVISION OF HIGHWAYS

SUBMITTED Dec 4 2013

*Jeffrey T. K...*  
DEPUTY DIRECTOR OF HIGHWAYS, REGION 5 ENGINEER

Jan 24 2014  
*John D. Baranzelli*  
ENGINEER OF DESIGN AND ENVIRONMENT

Jan 24 2014  
*Over Osman*  
DIRECTOR OF HIGHWAYS, CHIEF ENGINEER

**PRINTED BY THE AUTHORITY  
OF THE STATE OF ILLINOIS**