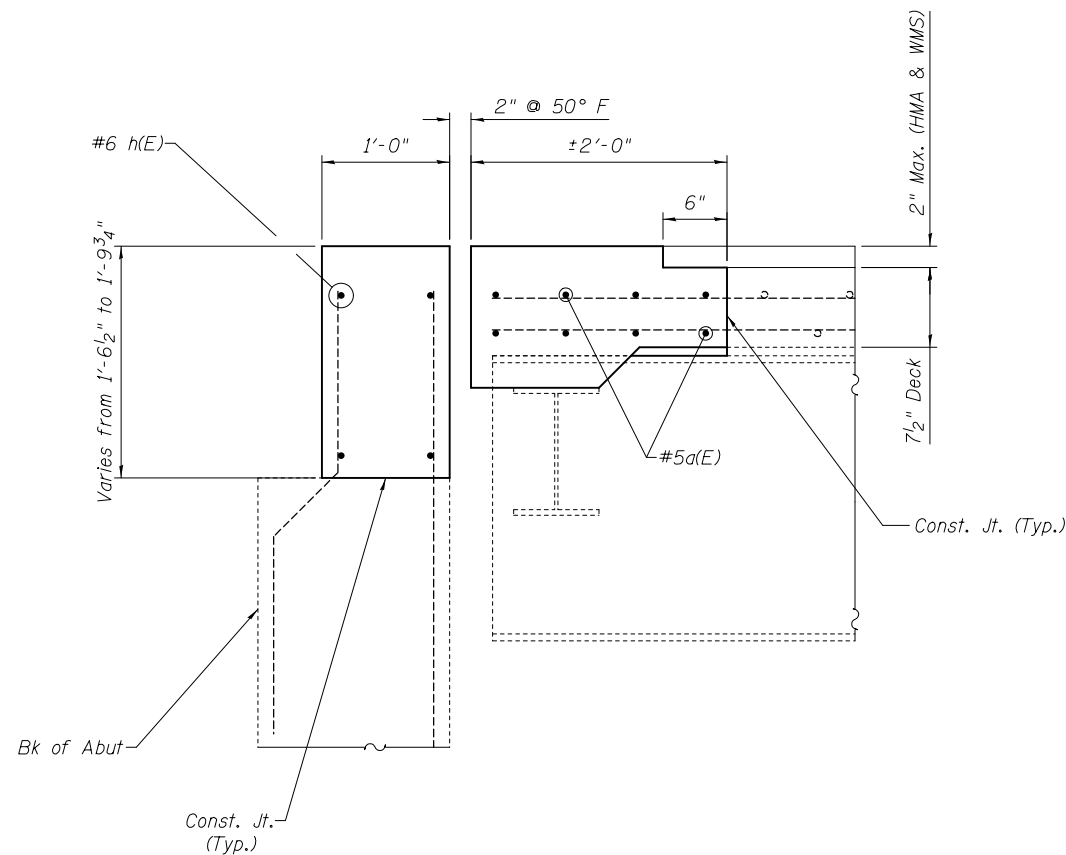
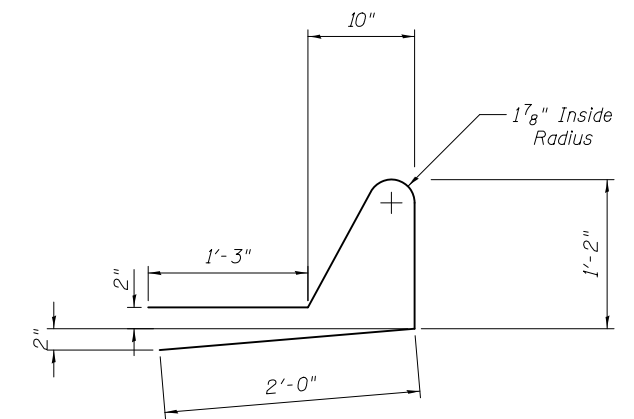


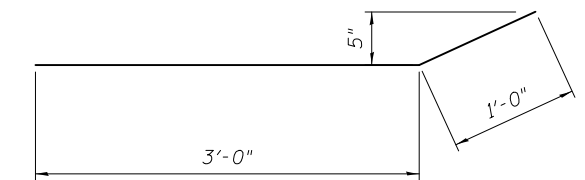
SECTION A-A



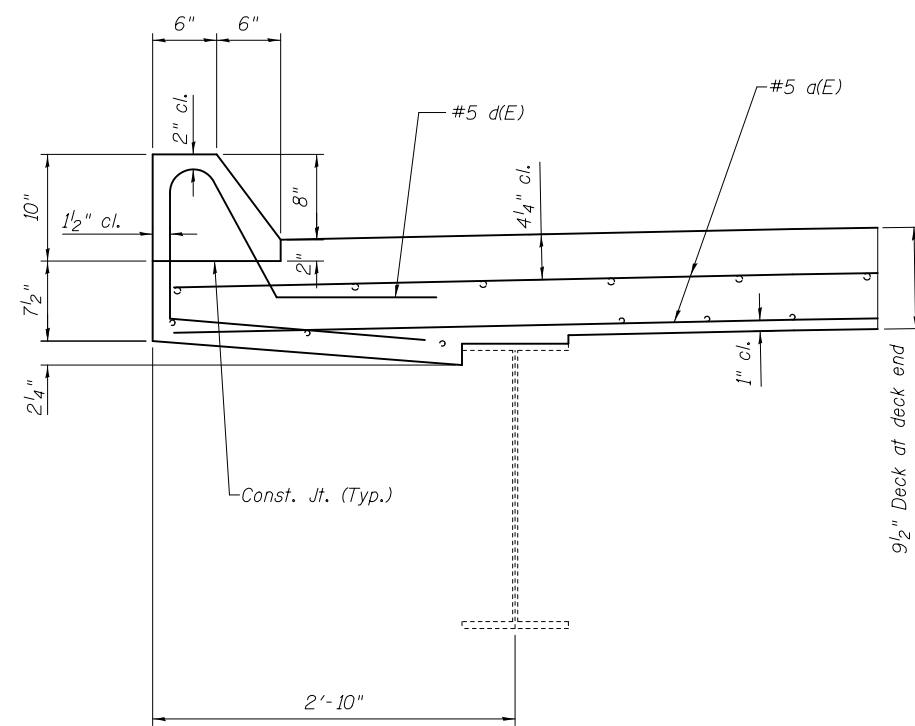
SECTION B-B



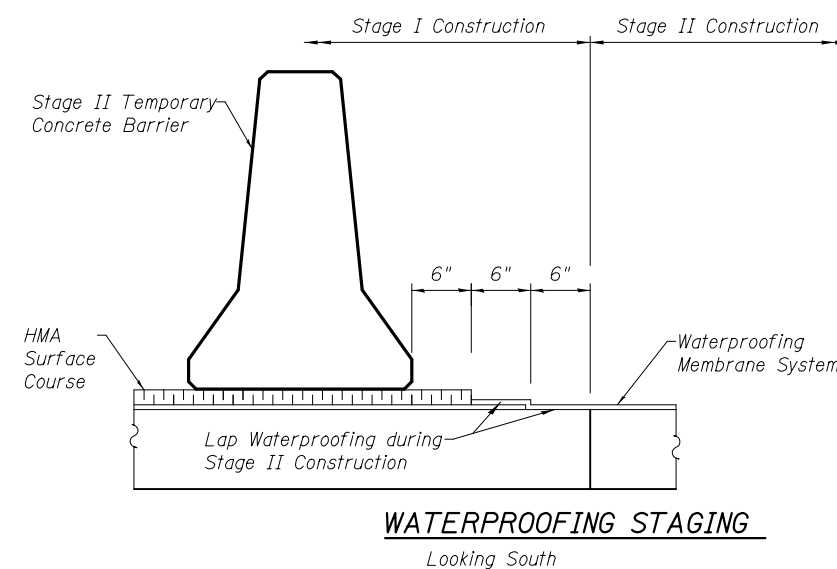
BAR d(E)



BAR h2(E)



PARAPET SECTION



WATERPROOFING STAGING

Looking South

BILL OF MATERIAL

Bar	No.	Size	Length	Shape
a(E)	32	#5	16'-8"	—
d(E)	12	#5	5'-11"	⤴
h(E)	16	#6	17'-7"	—
h1(E)	16	#4	4'-3"	—
h2(E)	8	#4	4'-0"	—
v(E)	8	#4	3'-0"	⌋
Concrete Removal			Cu. Yd.	9.6
Concrete Superstructure			Cu. Yd.	10.5
Reinforcement Bars, Epoxy Coated			Lbs.	1140

Reinforcement bars designated (E) shall be epoxy coated.

v(E) bar See Sheet 6 of 12

DESIGNED - AYV	EXAMINED	DATE -
CHECKED -	ENGINEER OF STRUCTURAL SERVICES	
DRAWN - AYV	PASSED	REVISED
CHECKED -	ENGINEER OF BRIDGES AND STRUCTURES	REVISED

**STATE OF ILLINOIS
DEPARTMENT OF TRANSPORTATION**

**JOINT DETAILS & WATERPROOFING STAGING
SN 042-0012**

SHEET NO. 5 OF 12 SHEETS

F.A.P. RTE.	SECTION	COUNTY	TOTAL SHEETS	SHEET NO.
304	4-BY, 4B-1	JERSEY	26	19
CONTRACT NO. 76G49				

ILLINOIS FED. AID PROJECT