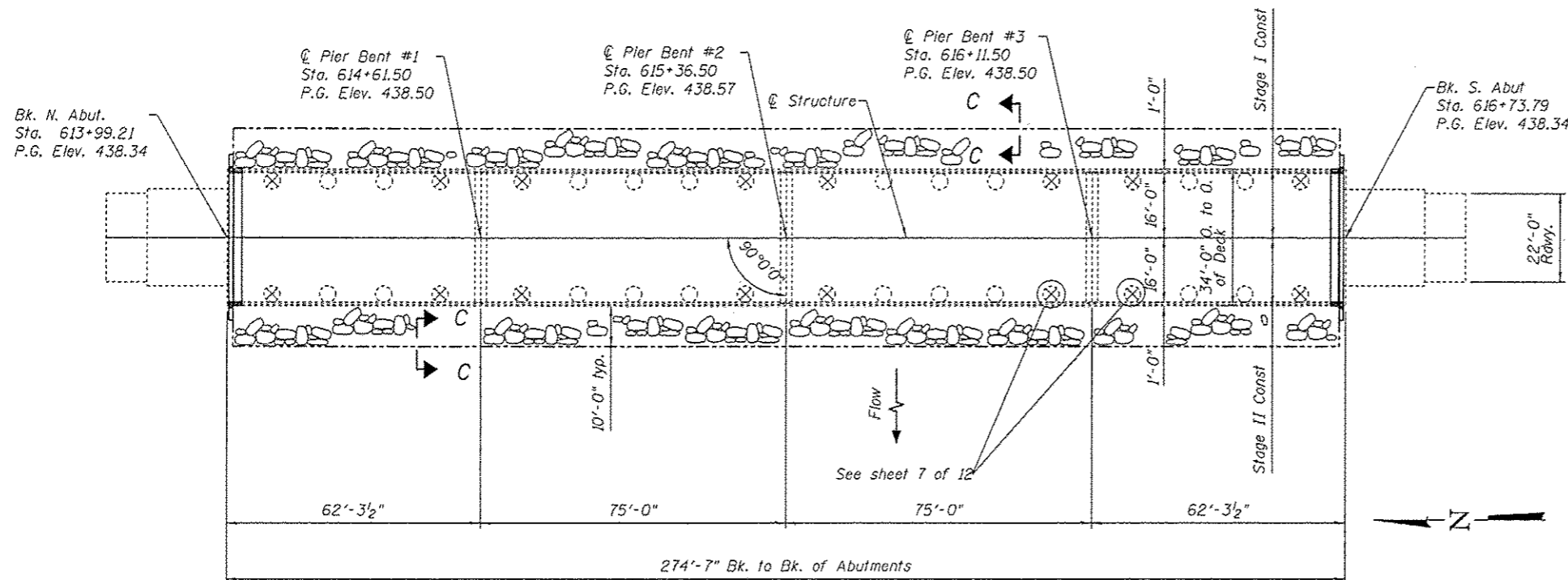


ELEVATION

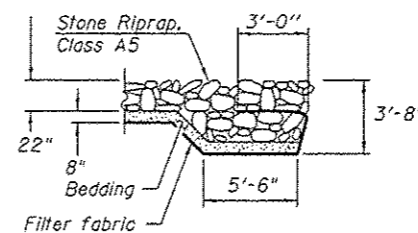


PLAN

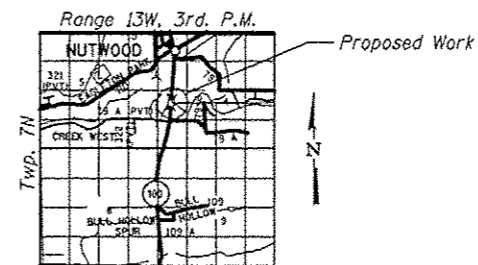
Replace deck ends, hatchblock and install Preformed Joint Strip Seals.  
 HMA overlay & WMS on deck  
 HMA overlay on approaches  
 Clean & paint beam ends.  
 Place A5 riprap from abut to abut per SET recommendations.  
 Plug Existing Drains

INDEX OF SHEETS

1. General Plan & Elevation
2. Deck Cross Section
3. Joint Removal
4. Joint Replacement
5. Joint Details & Waterproofing Staging
6. Elevation N. & S. Abutment Hatchblocks & Wingwalls
7. Drain Details
8. Strip Seal Details
9. Temporary Concrete Barrier
10. Bar Splicers
11. For Information Only (F.I.O.) - Existing Structural Steel
12. F.I.O. - Existing Bearing Details



SECTION C-C



LOCATION SKETCH

Plan dimensions and details relative to existing plans are subject to nominal construction variations. The Contractor shall field verify existing dimensions and details affecting new construction and make necessary approved adjustments prior to construction or ordering of materials. Such variations shall not be cause for additional compensation for a change in scope of the work, however, the Contractor will be paid for the quantity actually furnished at the unit price bid for the work.

Reinforcement bars designated (E) shall be epoxy coated.

Bridge deck concrete sealer shall be placed on top/inside faces of curbs (full length) and wingwalls and on top of new concrete at joints.

Joint opening shall be adjusted according to Article 520.04 of the Standard Specs. when the deck is poured at an ambient temperature other than 50° F.

Existing reinforcement bars extending into removal area shall be cleaned, straightened and incorporated into the new construction. Any reinforcement bars that are damaged during concrete removal shall be replaced with an approved bar splicer or anchorage system. Cost included with Concrete Removal.

Prior to pouring the new concrete deck, all heavy or loose rust, loose mill scale, and other loose or potentially detrimental foreign material shall be removed from the surfaces in contact with concrete. Tightly adhered paint may remain unless otherwise noted. Removal shall be accomplished by methods that will not damage the steel and the cost will be included in the pay item covering removal of the existing concrete.

Cleaning and Painting of the existing structural steel and bearings shall be included with "Cleaning and Painting Structural Steel, Location 1." All beams, bearings, deck drains, and other structural steel within 5 feet (measured along the beam) of either side of the deck joints shall be cleaned per "Near White Blast Cleaning-SSPC-SP10."

The designated areas cleaned per near white blast cleaning SSPC-SP10 shall be painted according to the requirement of paint system 1-OZ/E/U. The color of the final finish coat for all steel surfaces shall be Federal Standard Color Brown 595C 20045.

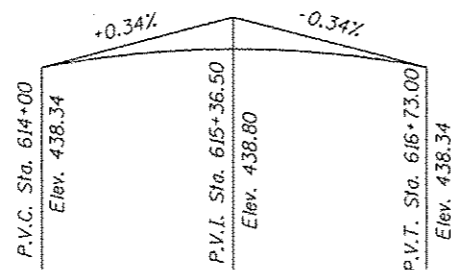
⊗ Plug Existing Drains (16 Req'd)

TOTAL BILL OF MATERIAL

ITEM	UNIT	TOTAL
Concrete Removal	Cu. Yd.	9.6
Concrete Superstructure	Cu. Yd.	10.5
Preformed Joint Strip Seal	Foot	66
Waterproofing Membrane System	Sq. Yd.	954
Reinforcement Bars, Epoxy Coated	Pound	1140
Bridge Deck Concrete Sealer	Sq. Ft	922
Plug Existing Deck Drains	Each	16
Bar Splicers	Each	24
Stone Riprap, Class A5	Sq. Yd.	1626
Filter Fabric	Sq. Yd.	1626
HMA Surface Course, Mix "D" NTO	Ton	107
Cleaning and Painting Structural Steel, Location 1	L. Sum	1
Containment & Disposal of Non-Lead Paint Cleaning Residues No. 1	L. Sum	1



Expires 11/30/14



PROFILE GRADE

DESIGNED - AYV	EXAMINED - <i>Timothy A. Alt</i>	DATE - 1/21/14
CHECKED - TLC	PASSED - <i>David Puzey</i>	REVISIONS
DRAWN - AYV		
CHECKED - TLC		

STATE OF ILLINOIS  
DEPARTMENT OF TRANSPORTATION

GENERAL PLAN & ELEVATION  
SN 042-0012

SHEET NO. 1 OF 12 SHEETS

F.A.P. RTE.	SECTION	COUNTY	TOTAL SHEETS	SHEET NO.
304	4-BY, 4B-1	JERSEY	26	15
CONTRACT NO. 76G49				
ILLINOIS FED. AID PROJECT				