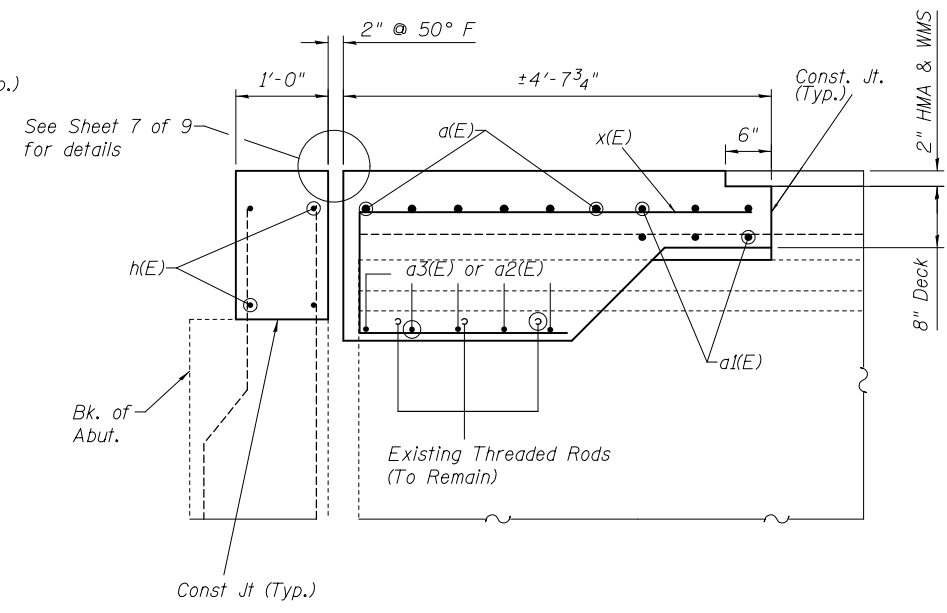
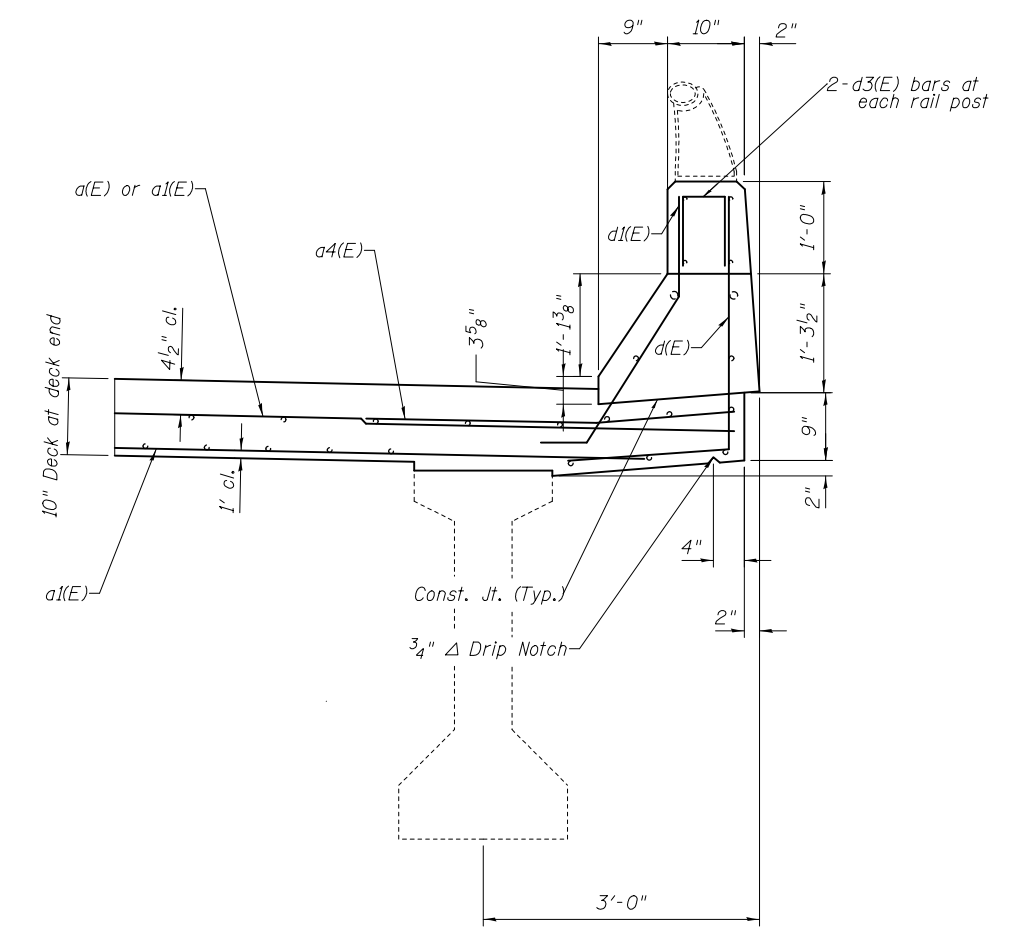


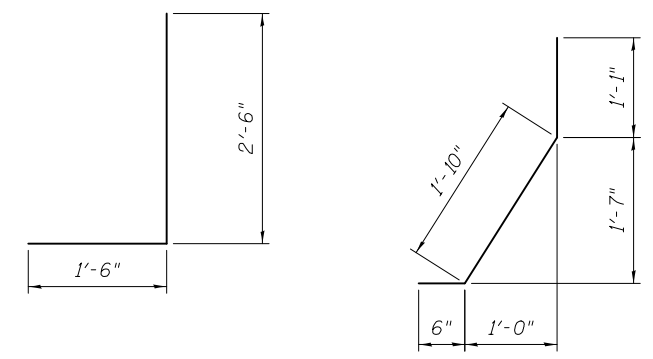
SECTION A-A



SECTION B-B

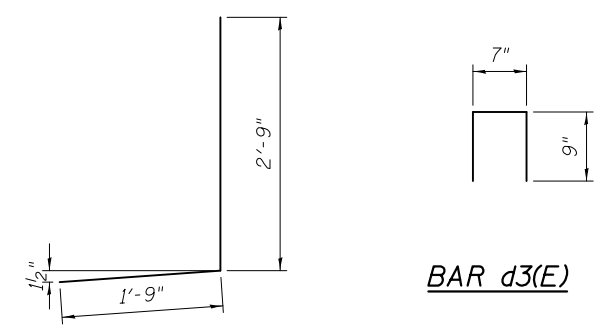


PARAPET SECTION



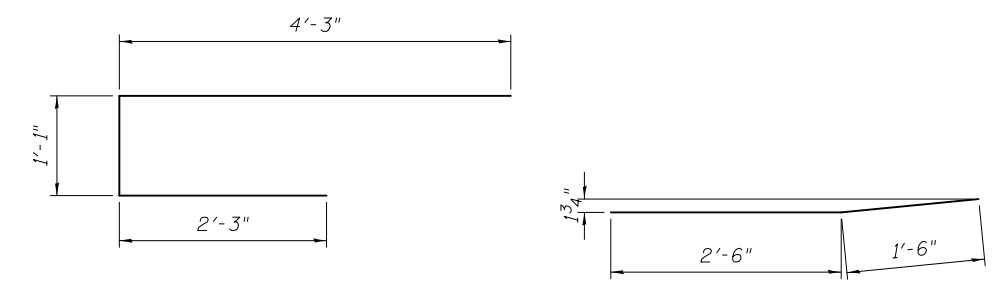
BAR d2(E)

BAR d1(E)



BAR d(E)

BAR d3(E)



BAR x(E)

BAR a4(E)

BILL OF MATERIAL

Bar	No.	Size	Length	Shape
a(E)	24	#7	22'-8"	—
a1(E)	24	#6	21'-8"	—
a2(E)	40	#6	7'-0"	—
a3(E)	20	#6	3'-4"	—
a4(E)	16	#6	4'-0"	—
d(E)	16	#4	4'-6"	J
d1(E)	8	#5	3'-5"	J
d2(E)	12	#5	4'-0"	J
d3(E)	8	#4	2'-1"	J
h(E)	16	#6	22'-8"	—
x(E)	150	#6	7'-7"	—
Concrete Removal			Cu. Yd.	29.9
Concrete Superstructure			Cu. Yd.	30.6
Reinforcement Bars, Epoxy Coated			Lbs.	4900

Reinforcement bars designated (E) shall be epoxy coated.

DESIGNED - AYV	EXAMINED	DATE -
CHECKED -	ENGINEER OF STRUCTURAL SERVICES	
DRAWN - AYV	PASSED	REVISED
CHECKED -	ENGINEER OF BRIDGES AND STRUCTURES	REVISED

**STATE OF ILLINOIS
DEPARTMENT OF TRANSPORTATION**

**JOINT DETAILS
SN 042-0019**

SHEET NO. 4 OF 9 SHEETS

F.A.P. RTE.	SECTION	COUNTY	TOTAL SHEETS	SHEET NO.
325	113BR, 113BR-1	JERSEY	33	28
CONTRACT NO. 76G44				
ILLINOIS FED. AID PROJECT				