

GENERAL NOTES

Plan dimensions and details relative to existing plans are subject to nominal construction variations. The Contractor shall field verify existing dimensions and details affecting new construction and make necessary approved adjustments prior to construction or ordering of materials. Such variations shall not be cause for additional compensation for a change in scope of the work, however, the Contractor will be paid for the quantity actually furnished at the unit price bid for the work.

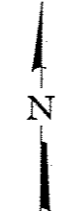
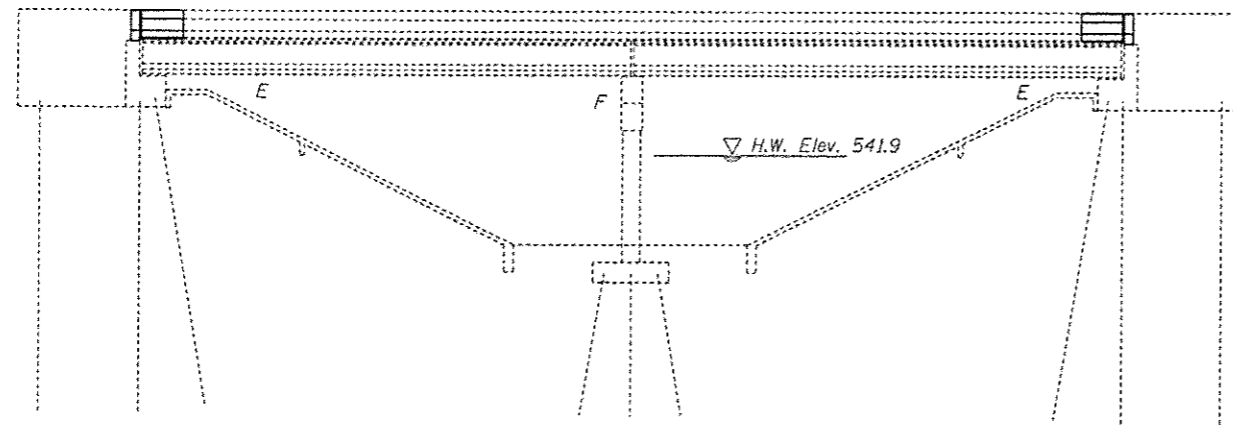
Reinforcement bars designated (E) shall be epoxy coated.

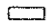


The Contractor shall use extreme care during concrete removal so as not to damage the PPC I-Beams.

Joint opening shall be adjusted according to Article 520.04 of the Standard Specs. when the deck is poured at an ambient temperature other than 50° F.

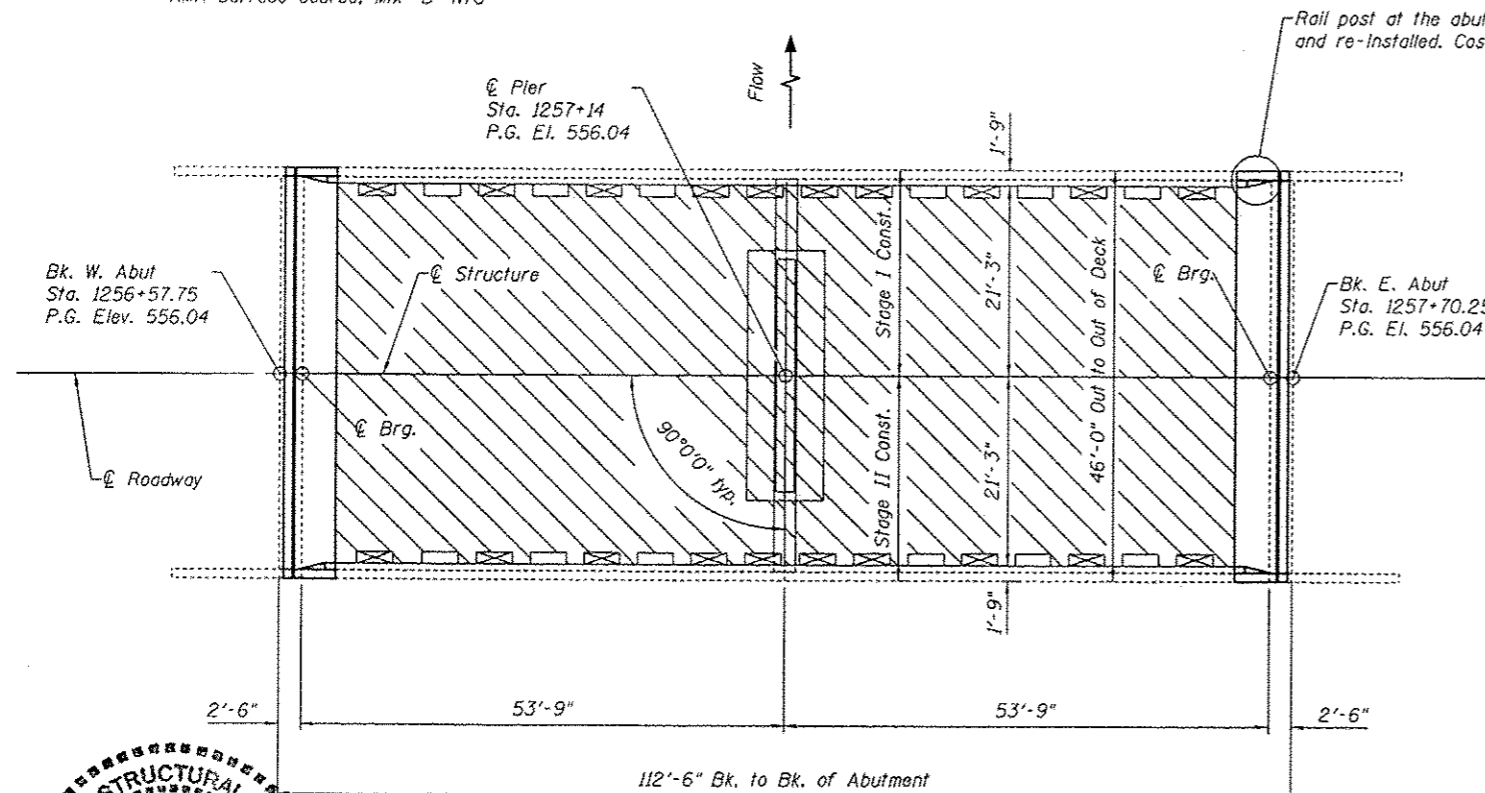
Existing reinforcement bars extending into removal area shall be cleaned, straightened and incorporated into the new construction. Any reinforcement bars that are damaged during concrete removal shall be replaced with an approved bar splicer or anchorage system. Cost included with Concrete Removal.

Bridge deck concrete sealer shall be placed on top/inside faces of parapets (full length)/wingwalls and on top of new concrete at joints.

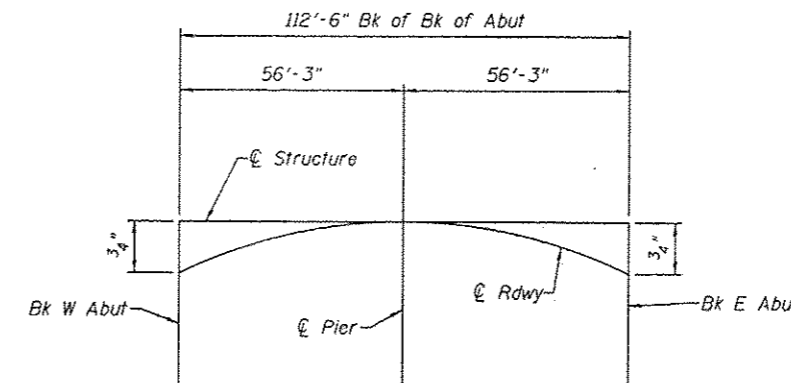


-  Floor Drain Extension (12 Req'd)
-  Plug Existing Drains (20 Req'd)
-  Hot-Mix Asphalt Surface Removal (Deck)
Waterproofing Membrane System
HMA Surface Course, Mix "D" N70

ELEVATION



Rail post at the abutments are to be removed, stored and re-installed. Cost included with Concrete Superstructure.



OFFSET SKETCH

Structure is tangent to rdwy at pier (Sta 1257+14)

INDEX OF SHEETS

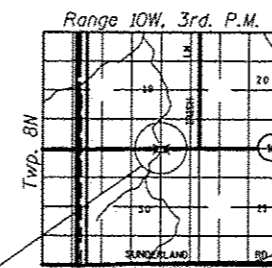
1. General Plan & Elevation
2. Deck Cross Section
3. Joint Removal & Replacement
4. Joint Details
5. Rail Anchorage Details
6. Drain Details & Waterproofing Staging
7. Strip Seal Details
8. Temporary Concrete Barrier
9. Bar Splicers

TOTAL BILL OF MATERIAL

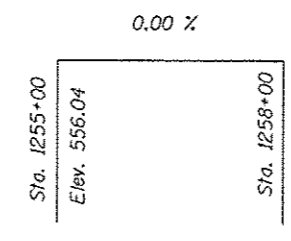
ITEM	UNIT	TOTAL
Concrete Removal	Cu. Yd.	29.9
Concrete Superstructure	Cu. Yd.	30.6
Preformed Joint Strip Seal	Foot	90
Waterproofing Membrane System	Sq. Yd.	472
Reinforcement Bars, Epoxy Coated	Pound	4900
Floor Drain Extensions	Each	12
Plug Existing Deck Drains	Each	20
Bar Splicers	Each	42
HMA Surface Course, Mix "D" N70	Ton	53
Bridge Deck Concrete Sealer	Sq. Ft.	185
Hot-Mix Asphalt Surface Removal (Deck)	Sq. Yd.	472
Deck Slab Repair (Partial)	Sq. Yd.	40
Deck Slab Repair (Full Depth, Type I)	Sq. Yd.	10
Deck Slab Repair (Full Depth, Type II)	Sq. Yd.	10

PLAN

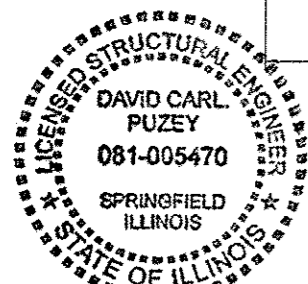
Replace deck ends, hatchblock and install Preformed Joint Strip Seals.
Floor Drain Extensions & Plug Existing Drains.
HMA overlay with WMS



LOCATION SKETCH



PROFILE GRADE



Expires 11/30/14

DESIGNED - A.Y.V.	EXAMINED - <i>Timothy A. Dell</i>	DATE - 1/21/14	STATE OF ILLINOIS DEPARTMENT OF TRANSPORTATION	GENERAL PLAN & ELEVATION 042-0019		F.A.P. RTE. 325	SECTION 1138R, 1138R-1	COUNTY Jersey	TOTAL SHEETS 33	SHEET NO. 25	
CHECKED - TLC	PASSED - <i>David Carl Puzey</i>	REVISED		SHEET NO. 1 OF 9 SHEETS		CONTRACT NO. 76644		ILLINOIS FED. AID PROJECT			
DRAWN - A.Y.V.		REVISED									
CHECKED - TLC		REVISED									