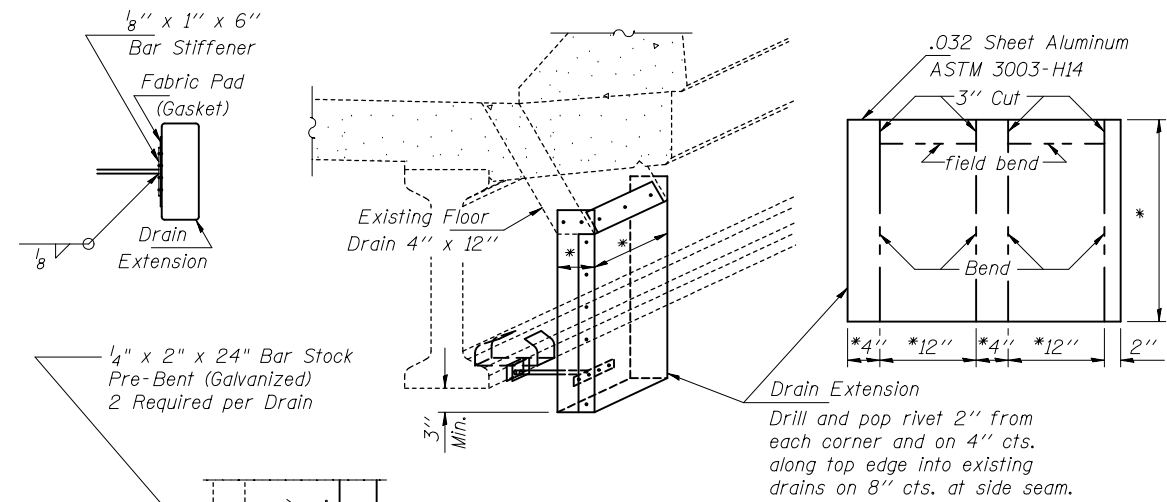


DRAIN DETAIL



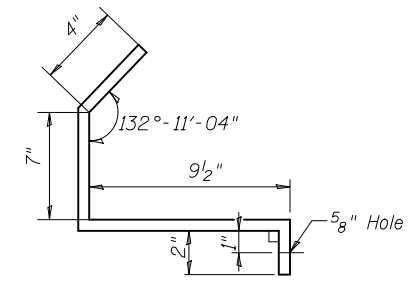
1/4" x 2" x 24" Bar Stock
Pre-Bent (Galvanized)
2 Required per Drain

Galvanized Nut,
Lock Washer,
& Flat Washer
(6 Each Required
Per Drain)

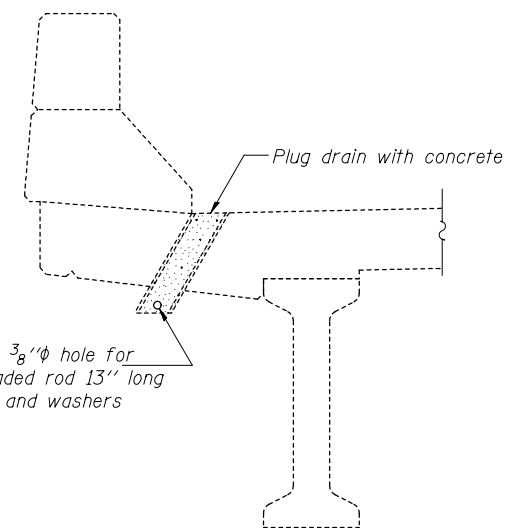
1/2" x 24"
Galvanized Threaded Rod

See Drain Extension
Plan View

Notes: Pop rivet the 1/8" x 1" bar to Drain Extension. Weld or securely attach rod to both the bracket and bar stiffener. Use 3/16" stainless steel pop rivets of sufficient length.
* Field measure cut to fit existing drain.
An aluminum extrusion drain extension of similar dimensions may be substituted.



BRACKET DETAIL

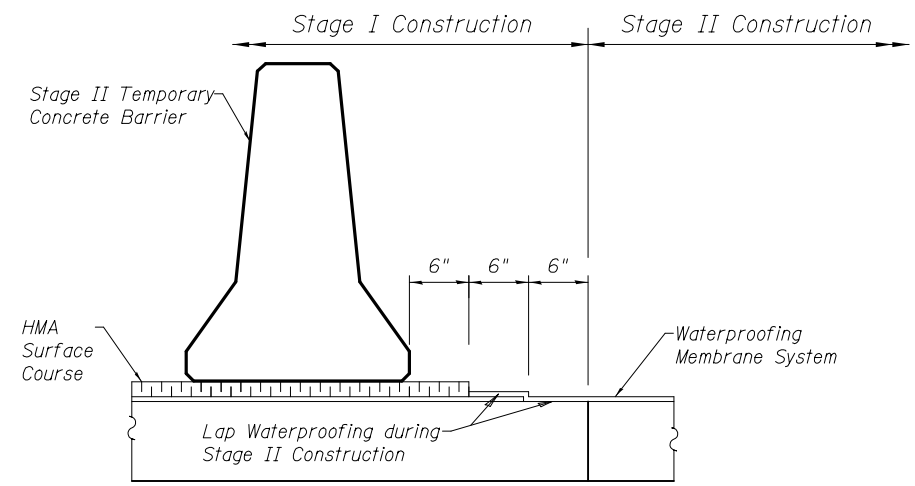


Field drill 3/8" diameter hole for
1/4" diameter threaded rod 13" long
with nuts and washers

PLUG DRAIN DETAIL

FLOOR DRAIN EXTENSION DETAIL

See sheet 1 of 11 for locations



WATERPROOFING STAGING

Looking East

| | | | | | | | | | | |
|-------------------|------------------------------------|---------|---|--|---------------------------|----------------|--------|--------------|-----------|--|
| DESIGNED - A.Y.V. | EXAMINED | DATE - | STATE OF ILLINOIS DEPARTMENT OF TRANSPORTATION | DRAIN DETAILS & WATERPROOFING STAGING SN 042-0018 | F.A.P. | SECTION | COUNTY | TOTAL SHEETS | SHEET NO. | |
| CHECKED - | ENGINEER OF STRUCTURAL SERVICES | | | | 325 | 113BR, 113BR-1 | JERSEY | 33 | 21 | |
| DRAWN - A.Y.V. | PASSED | REVISOR | | | CONTRACT NO. 76G44 | | | | | |
| CHECKED - | ENGINEER OF BRIDGES AND STRUCTURES | REVISOR | | | ILLINOIS FED. AID PROJECT | | | | | |
| | | | | | SHEET NO. 8 OF 11 SHEETS | | | | | |