

GENERAL NOTES

Plan dimensions and details relative to existing plans are subject to nominal construction variations. The Contractor shall field verify existing dimensions and details affecting new construction and make necessary approved adjustments prior to construction or ordering of materials. Such variations shall not be cause for additional compensation for a change in scope of the work, however, the Contractor will be paid for the quantity actually furnished at the unit price bid for the work.

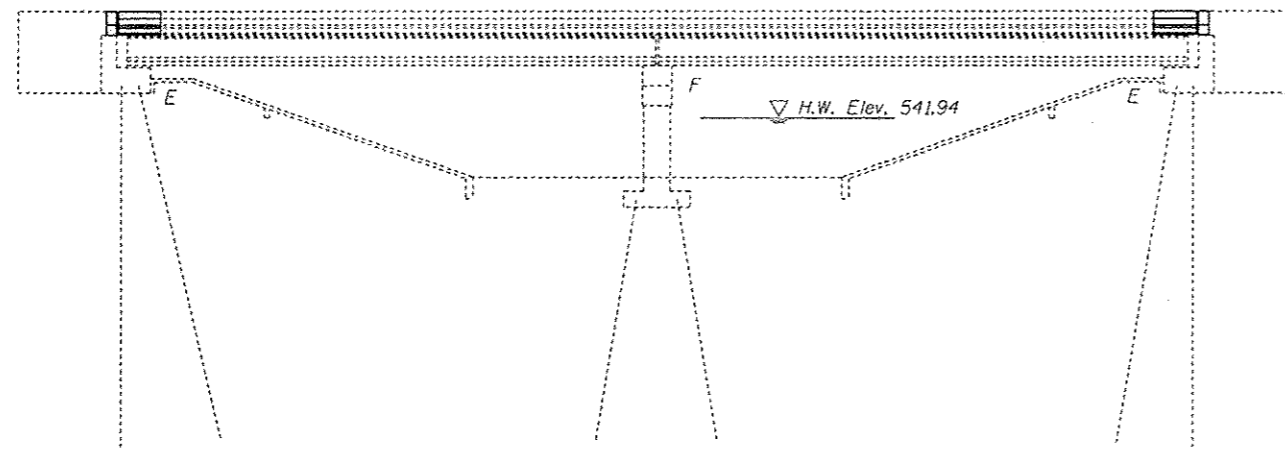
Reinforcement bars designated (E) shall be epoxy coated.

The Contractor shall use extreme care during concrete removal so as not to damage the PPC I-Beams.

Joint opening shall be adjusted according to Article 520.04 of the Standard Specs. when the deck is poured at an ambient temperature other than 50° F.

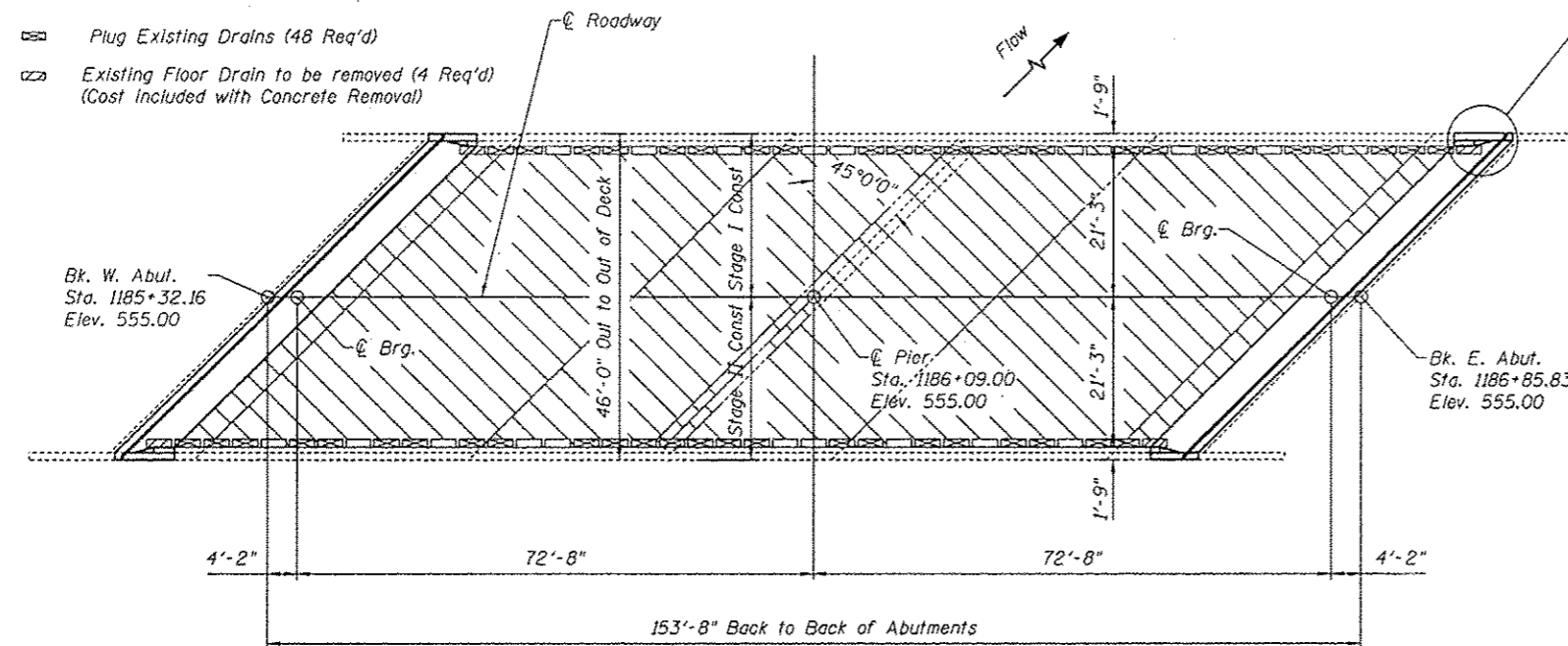
Existing reinforcement bars extending into removal area shall be cleaned, straightened and incorporated into the new construction. Any reinforcement bars that are damaged during concrete removal shall be replaced with an approved bar splicer or anchorage system. Cost included with Concrete Removal.

Bridge deck concrete sealer shall be placed on top/inside faces of parapets (full length)/wingwalls and on top of new concrete at joints.



ELEVATION

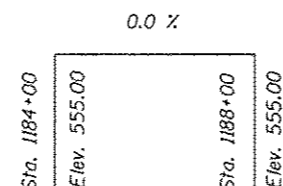
- Floor Drain Extension (20 Req'd)
- ⊞ Plug Existing Drains (48 Req'd)
- ⊞ Existing Floor Drain to be removed (4 Req'd)
(Cost Included with Concrete Removal)



PLAN

Replace deck ends, hatchblock and install Preformed Joint Strip Seals.
Floor Drain Extensions & Plug Existing Drains.
HMA overlay with WMS

- ⊞ Hot-Mix Asphalt Surface Removal (Deck)
- ⊞ Waterproofing Membrane System
- ⊞ HMA Surface Course, Mix "D" N70



PROFILE GRADE

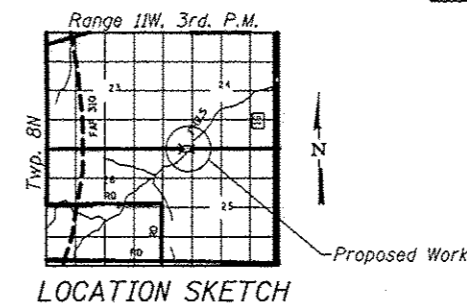
Rail posts at the abutments are to be removed, stored and re-installed. Cost included with Concrete Superstructure.

INDEX OF SHEETS

1. General Plan & Elevation
2. Deck Cross Section
3. Joint Removal
4. Joint Replacement (W. Abut.)
5. Joint Replacement (E. Abut.)
6. Joint Details
7. Rail Anchorage Details
8. Drain Details & Waterproofing Staging
9. Strip Seal Details
10. Temporary Concrete Barrier
11. Bar Splicers

TOTAL BILL OF MATERIAL

ITEM	UNIT	TOTAL
Concrete Removal	Cu. Yd.	43.1
Concrete Superstructure	Cu. Yd.	43.9
Preformed Joint Strip Seal	Foot	128
Waterproofing Membrane System	Sq. Yd.	648
Reinforcement Bars, Epoxy Coated	Pound	5470
Floor Drain Extensions	Each	20
Plug Existing Deck Drains	Each	48
Bar Splicers	Each	30
HMA Surface Course, Mix "D" N70	Ton	73
Bridge Deck Concrete Sealer	Sq. Ft	1801
Hot-Mix Asphalt Surface Removal (Deck)	Sq. Yd.	648
Deck Slab Repair (Partial)	Sq. Yd.	40
Deck Slab Repair (Full Depth, Type I)	Sq. Yd.	10
Deck Slab Repair (Full Depth, Type II)	Sq. Yd.	10



LOCATION SKETCH



Expires 11/30/14

DESIGNED - A.Y.V.	EXAMINED - <i>Travis A. Galt</i>	DATE - 1/21/14	STATE OF ILLINOIS DEPARTMENT OF TRANSPORTATION	GENERAL PLAN & ELEVATION 042-0018	F.A.P. RTE. 325	SECTION 113BR, 113BR-1	COUNTY Jersey	TOTAL SHEETS 33	SHEET NO. 14
CHECKED - TLC	PASSED - <i>David Carl Puzey</i>	REVISIONS			CONTRACT NO. 76G44				
DRAWN - A.Y.V.	ENGINEER OF BRIDGES AND STRUCTURES	REVISIONS			SHEET NO. 1 OF 11 SHEETS				
CHECKED - TLC	ENGINEER OF BRIDGES AND STRUCTURES	REVISIONS			ILLINOIS FED. AID PROJECT				