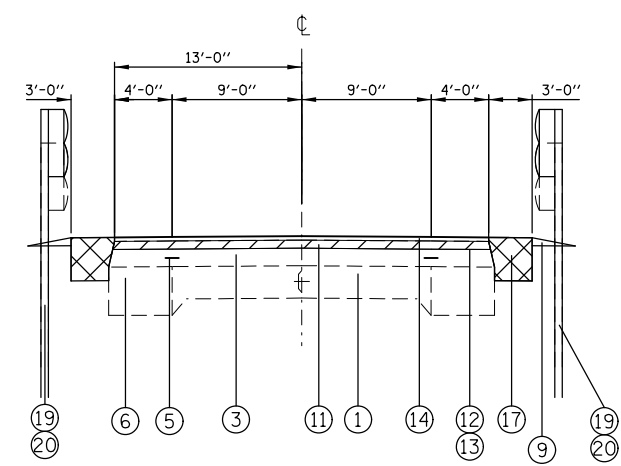
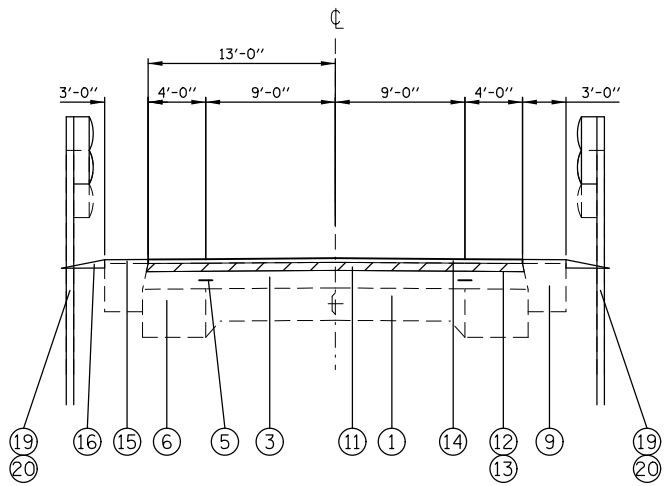


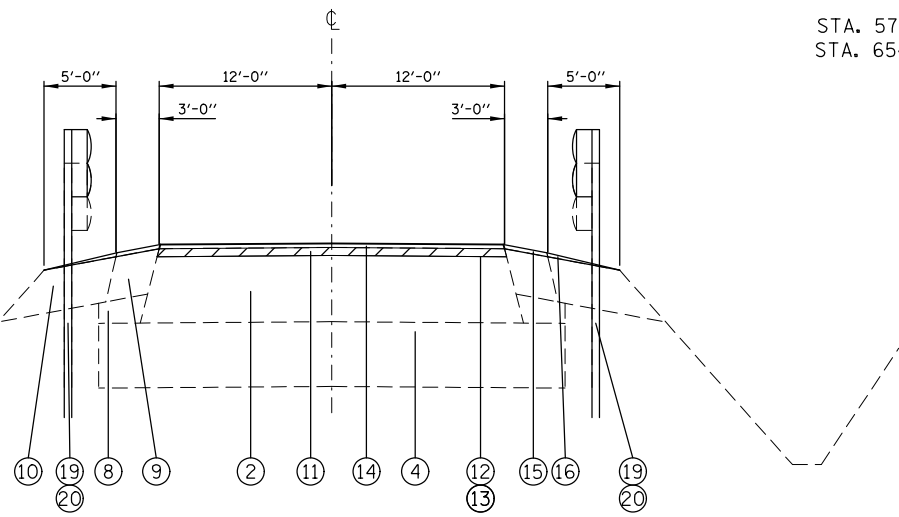
STA. 542+82 TO STA. 547+62*
 STA. 547+62 TO STA. 551+74**
 STA. 551+74 TO STA. 556+54*
 OMISSION STA. 549+65 TO STA. 550+01



STA. 576+67 TO STA. 632+28
 STA. 654+00 TO STA. 664+00

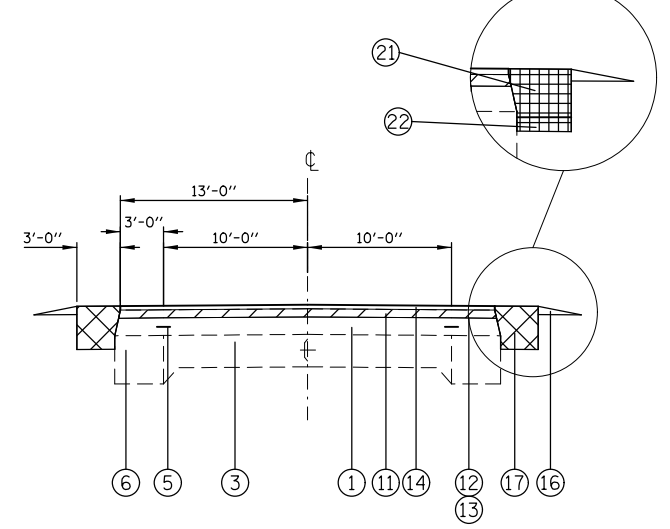


STA. 632+28 TO STA. 654+00 (SHOULDER WITH RUMBLE STRIP)



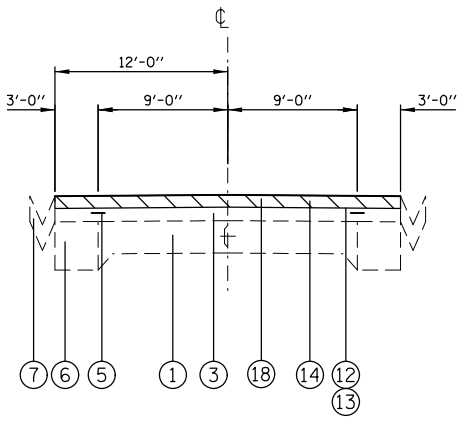
STA. 532+39 TO STA. 542+82
 STA. 556+54 TO STA. 568+42
 STA. 664+00 TO STA. 687+95
 STA. 690+37 TO STA. 713+00
 BRIDGE OMISSION STA. 687+95 TO STA. 690+37
 STATION EQUATION
 STA. 568+42 = STA. 576+67

TYPICAL BOTH SIDES
 STA. 825+97 TO STA. 828+47
 STA. 825+53 TO STA. 828+03
 NOTE: PAVED SHOULDER WIDTH IS NOT TYPICAL IN THIS SECTION. REMOVAL OF 3' PAVED SHOULDER THROUGHOUT THIS SECTION WAS ASSUMED FOR QUANTITIES SHOWN IN THE PLANS.

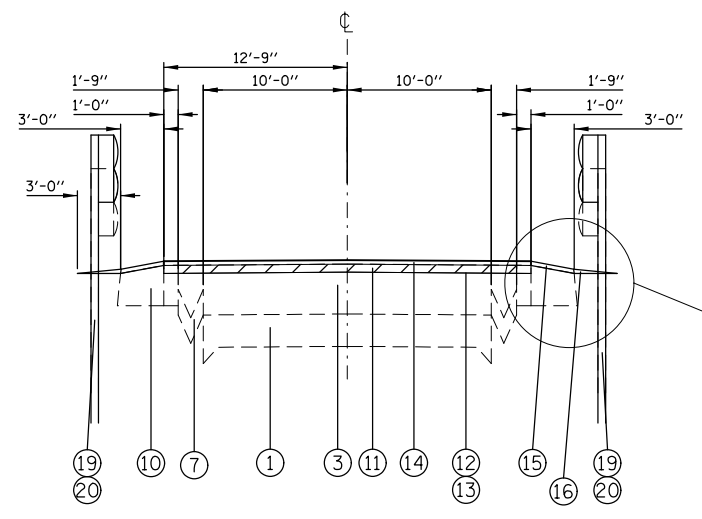


STA. 713+00 TO STA. 781+14
 STA. 791+47 TO STA. 827+02
 BRIDGE STA. 827+02 TO STA. 831+25 (SEE STRUCTURE SHEETS)

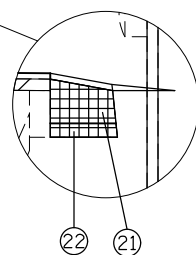
- 1 EXISTING 9-6-9 PAVEMENT
- 2 EXISTING BITUMINOUS CONCRETE PAVEMENT - 13 3/4"
- 3 EXISTING HOT-MIX ASPHALT OVERLAY - VARIES
- 4 EXISTING LIME MODIFIED SOIL - 12"
- 5 EXISTING STRIP REFLECTIVE CRACK CONTROL
- 6 EXISTING BASE COURSE WIDENING - 8"
- 7 EXISTING CONCRETE GUTTER, TYPE B
- 8 EXISTING SUB-BASE GRANULAR MATERIAL
- 9 EXISTING HOT-MIX ASPHALT SHOULDERS - 8"
- 10 EXISTING AGGREGATE SHOULDERS
- 11 PROPOSED HOT-MIX ASPHALT REMOVAL - 1 1/2"
- 12 PROPOSED AGGREGATE (PRIME COAT)
- 13 PROPOSED BITUMINOUS MATERIALS (PRIME COAT)
- 14 PROPOSED HOT-MIX ASPHALT SURFACE COURSE - 2 1/4"
- 15 PROPOSED HOT-MIX ASPHALT SHOULDER OVERLAY - VARIES
- 16 PROPOSED AGGREGATE WEDGE SHOULDER, TYPE B
- 17 PROPOSED HOT-MIX ASPHALT SHOULDER - 8"
- 18 PROPOSED HOT-MIX ASPHALT REMOVAL - 2 1/4"
- 19 EXISTING STEEL PLATE BEAM GUARDRAIL ***
- 20 PROPOSED STEEL PLATE BEAM GUARDRAIL, TYPE A ***
- 21 PROPOSED PAVED SHOULDER REMOVAL
- 22 PROPOSED EARTH EXCAVATION (WIDENING)
- 23 PROPOSED HOT-MIX ASPHALT BASE COURSE (WIDENING), 8"



STA. 781+14 TO STA. 791+47



STA. 831+25 TO STA. 834+61
 BRIDGE STA. 834+61 TO STA. 836+71 (SEE STRUCTURE SHEETS)



TYPICAL BOTH SIDES
 STA. 831+20 TO STA. 834+67
 STA. 830+76 TO STA. 834+67
 NOTE: PAVED SHOULDER WIDTH IS NOT TYPICAL IN THIS SECTION. REMOVAL OF 3' PAVED SHOULDER THROUGHOUT THIS SECTION WAS ASSUMED FOR QUANTITIES SHOWN IN THE PLANS.

EXCAVATING & GRADING EXISTING SHOULDERS

- HOT-MIX ASPHALT REMOVAL - 1 1/2"
- HOT-MIX ASPHALT REMOVAL - 2 1/4"

*** SEE GUARDRAIL SCHEDULE FOR LOCATIONS

FILE NAME =	USER NAME = challandeske	DESIGNED -	REVISED -
et:\pwork\pwork\challandeske\d0332017\0876025-sh-typical.dgn		DRAWN -	REVISED -
	PLOT SCALE = 100.0000' / 1in.	CHECKED -	REVISED -
MODELNAME	PLOT DATE = 1/17/2014	DATE -	REVISED -

STATE OF ILLINOIS
 DEPARTMENT OF TRANSPORTATION

TYPICAL SECTIONS

SCALE: NONE SHEET 1 OF 1 SHEETS STA. TO STA.

F.A.P. RTE.	SECTION	COUNTY	TOTAL SHEETS	SHEET NO.
604	(103,125)RS-2, 125-BR-2	MADISON	46	9
CONTRACT NO. 76G25				
ILLINOIS FED. AID PROJECT				