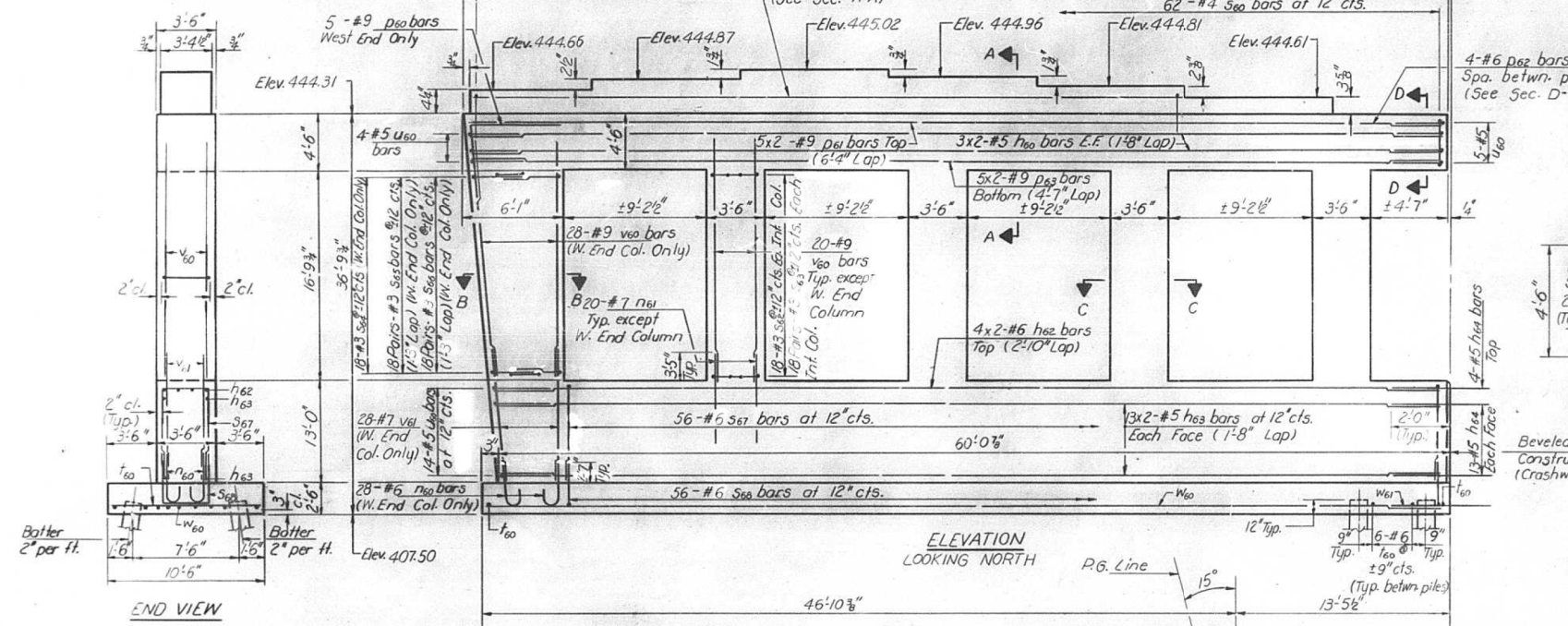
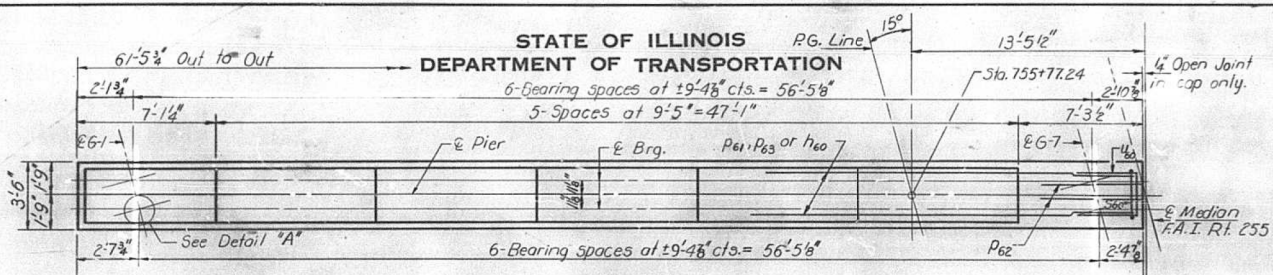
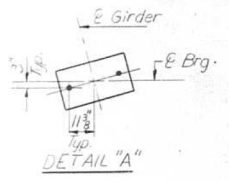
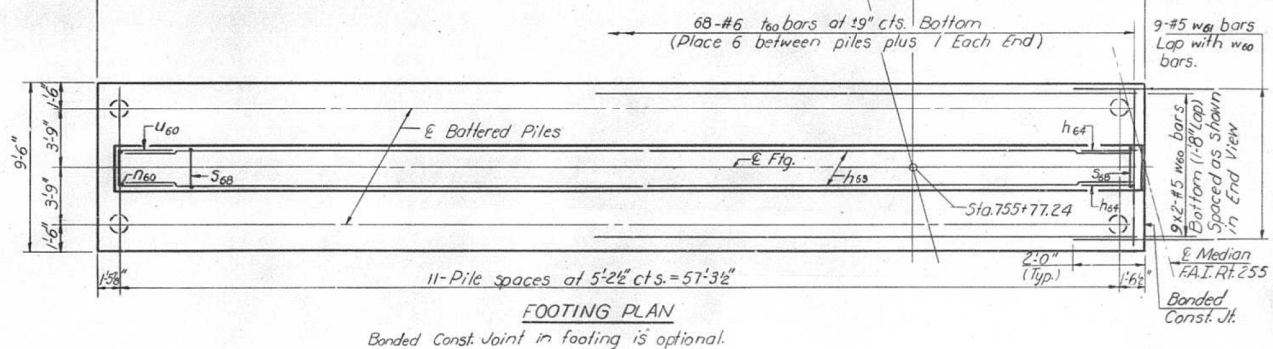


NOTES:
 Space reinforcement in cap to miss anchor bolts.
 All edges shall have standard $\frac{3}{8}$ chamfers except as noted.
 Four steps monolithically with cap.
 Bars indicated thus 3x2-#5 etc. indicates 3 lines of bars with 2 lengths per line.

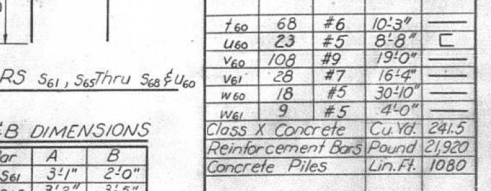
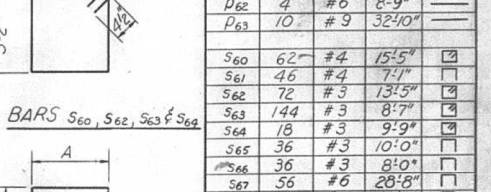
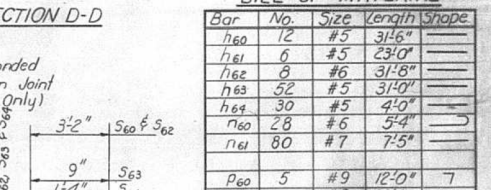
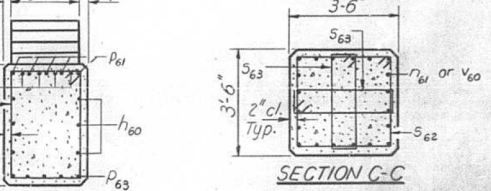
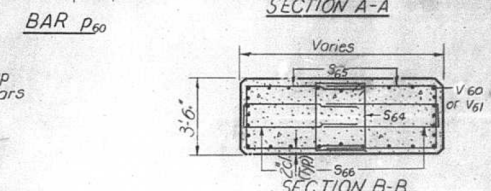
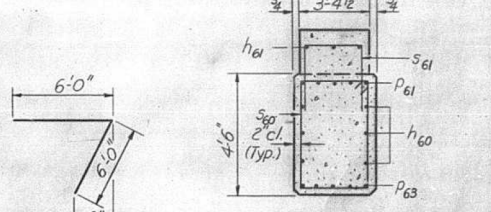


PILE DATA

Type: Concrete
 Capacity: 45 tons
 Est. Length: 45'
 No. Required: 24



ROUTE NO.	SECTION	COUNTY	SHEET NO.	SHEET NO. OF SHEETS
255	82-4	ST. CLAIR	50	28



BILL OF MATERIAL

Bar	No.	Size	Length	Shape
h60	12	#5	31'-6"	
h61	6	#5	23'-0"	
h62	6	#6	31'-8"	
h63	52	#5	31'-0"	
h64	30	#5	4'-0"	
h60	28	#6	5'-4"	
h61	80	#7	7'-5"	
P60	5	#9	12'-0"	7
P61	10	#9	33'-9"	
P62	4	#6	8'-9"	
P63	10	#9	32'-10"	
S60	62	#4	15'-5"	□
S61	46	#4	7'-7"	□
S62	72	#3	13'-5"	□
S63	144	#3	8'-7"	□
S64	18	#3	9'-9"	□
S65	36	#3	10'-0"	□
S66	36	#3	8'-0"	□
S67	56	#6	28'-8"	□
S68	56	#6	12'-6"	□
T60	68	#6	10'-3"	□
U60	23	#5	8'-8"	□
V60	108	#9	19'-0"	□
W60	28	#7	16'-4"	□
W60	18	#5	30'-10"	□
W61	9	#5	4'-0"	□

Class X Concrete Cu. Yd. 241.5
 Reinforcement Bars Pound 21,920
 Concrete Piles Lin. Ft. 1080

PIER 6
WEST BOUND LANES
 F.A.I. RT. 255 SEC. 82-4-HVB(B)
 ST. CLAIR COUNTY
 STA. 750+74.23

DESIGNED	<i>[Signature]</i>	EXAMINED	<i>[Signature]</i>
CHECKED	Rick Brunette	PASSED	
DRAWN	R. Dety	APPROVED	
CHECKED	RAB		

FOR INFORMATIONAL PURPOSES ONLY