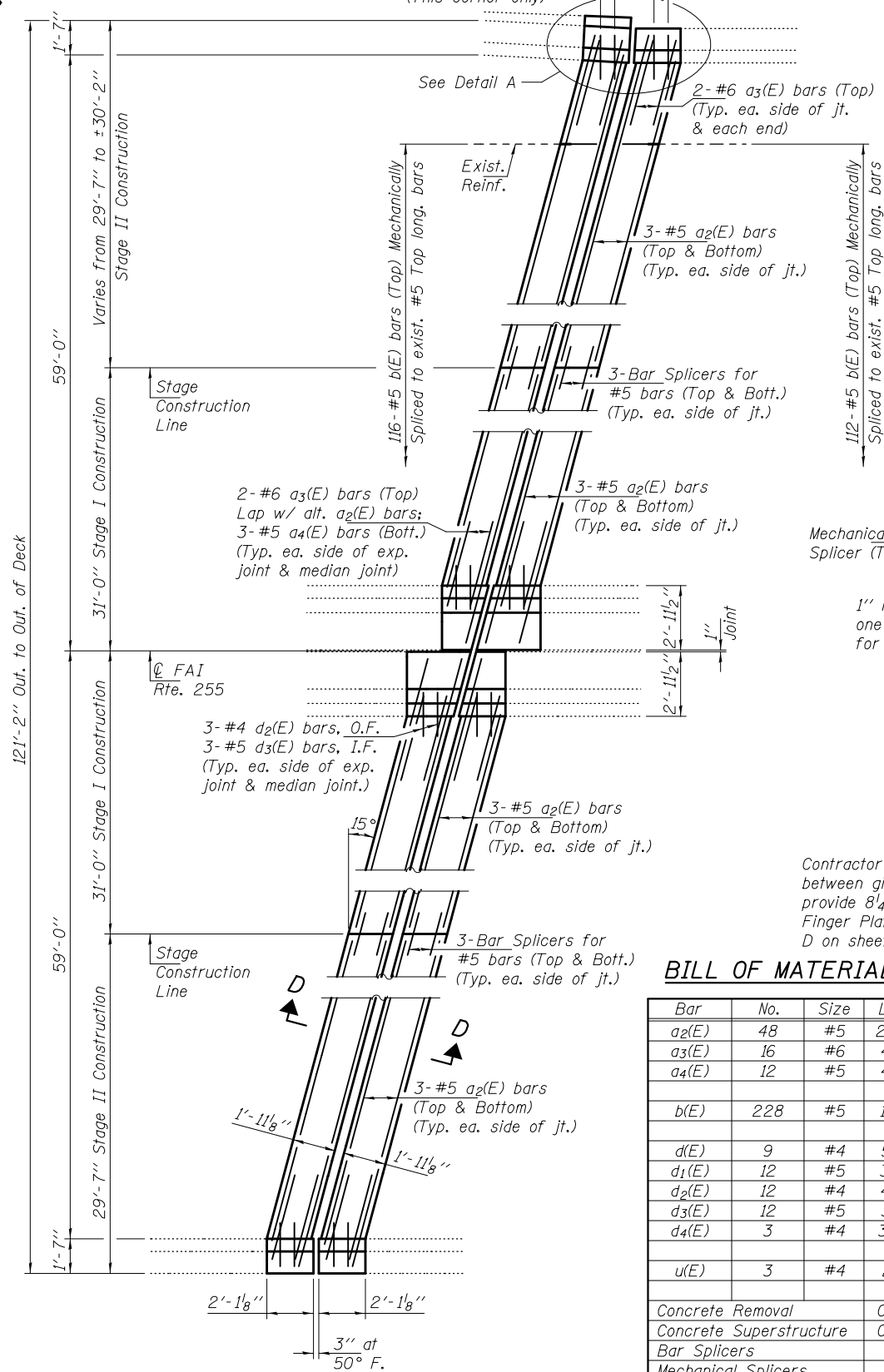
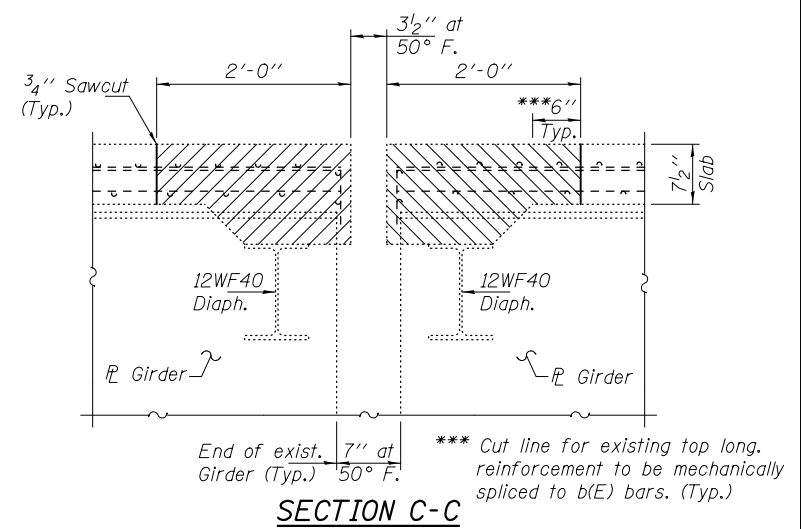


CONCRETE REMOVAL AT PIER 2

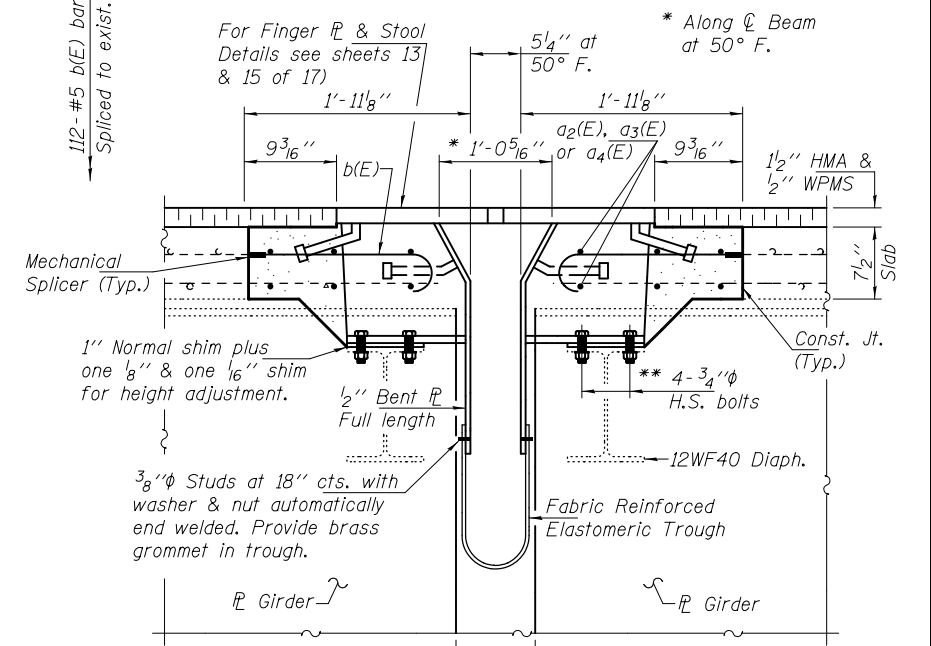
Notes:
Hatched areas indicate concrete removal.
For Reinforcement Details and Parapet
Details see sheet 14 of 17.



CONCRETE REPLACEMENT AT PIER 2



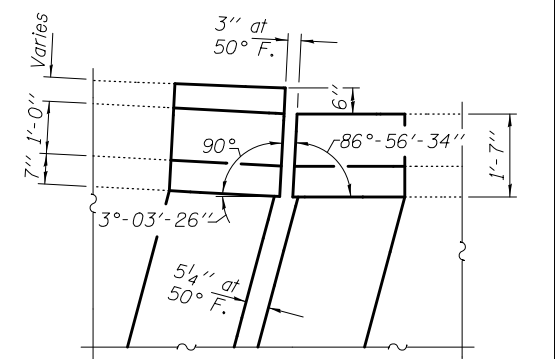
SECTION C-C



SECTION D-D

BILL OF MATERIAL (PIER 2)

Bar	No.	Size	Length	Shape
a2(E)	48	#5	29'-6"	—
a3(E)	16	#6	4'-0"	—
a4(E)	12	#5	4'-0"	—
b(E)	228	#5	1'-10"	C
d(E)	9	#4	5'-7"	L
d1(E)	12	#5	3'-11"	L
d2(E)	12	#4	4'-4"	L
d3(E)	12	#5	3'-9"	L
d4(E)	3	#4	3'-10"	L
u(E)	3	#4	2'-1"	C
Concrete Removal			Cu. Yd.	24.4
Concrete Superstructure			Cu. Yd.	23.3
Bar Splicers			Each	24
Mechanical Splicers			Each	228
Finger Exp. Jt., 4 1/2"			Foot	116
Reinforcement Bars, Epoxy Coated			Pound	2240



DETAIL A
(Reinforcement not shown for clarity.)

DESIGNED <i>ATH</i>	EXAMINED <i>Timothy A. ...</i>	DATE JANUARY 22, 2014
CHECKED <i>VHV</i>	PASSED <i>...</i>	REVISED
DRAWN <i>Steffen</i>	ACTING ENGINEER OF BRIDGES AND STRUCTURES	REVISED
CHECKED <i>ATH VHV</i>		

STATE OF ILLINOIS DEPARTMENT OF TRANSPORTATION		PIER 2 JOINT REMOVAL & REPLACEMENT SN 082-0227		F.A.I. RTE. 255	SECTION 82-4HB-1	COUNTY ST. CLAIR	TOTAL SHEETS 46	SHEET NO. 29	
SHEET NO. 7 OF 17 SHEETS								CONTRACT NO. 76D51	
ILLINOIS FED. AID PROJECT									