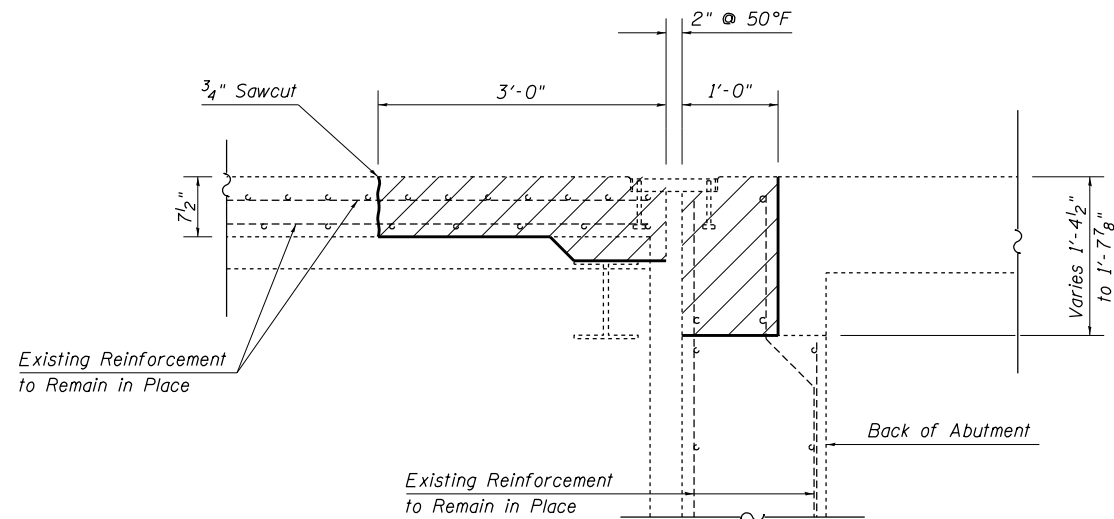
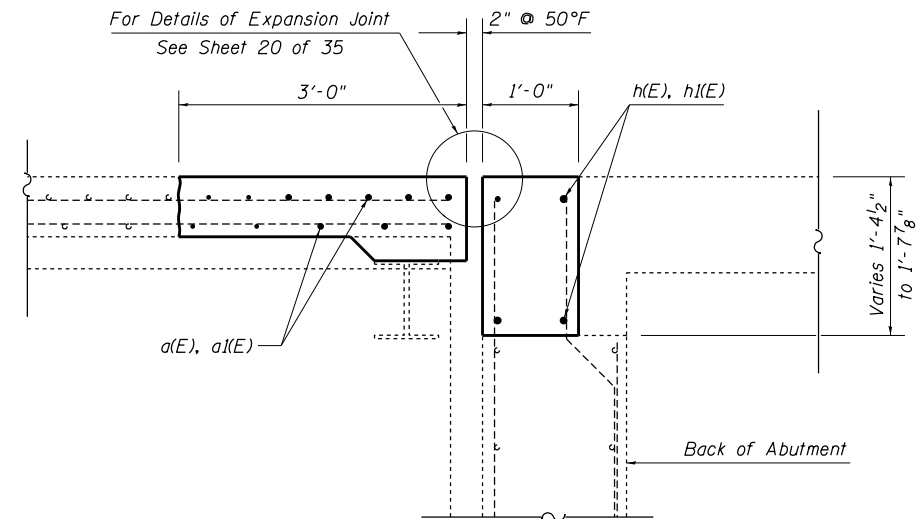


Hatching Indicates Concrete Removal.

- Existing Reinforcement
- Proposed Reinforcement



**SECTION G-G**  
 (Dimensions at Rt. L's to end of deck)  
 (WEST ABUTMENT)



**SECTION H-H**  
 (Dimensions at Rt. L's to end of deck)  
 (WEST ABUTMENT)

FILE NAME =	USER NAME = steffenmk	DESIGNED - MJM	REVISED -	<b>STATE OF ILLINOIS DEPARTMENT OF TRANSPORTATION</b>	<b>EXPANSION JOINT REPLACEMENT DETAILS - WEST ABUTMENT SN. 096-0010</b>	F.A.P. RTE.	SECTION	COUNTY	TOTAL SHEETS	SHEET NO.	
c:\pw\work\p\dot\stefjenmk\d0340638\074618-sh-t-brdetails-0960010.dgn	PLOT SCALE = 40.0000' / in.	DRAWN - MJM	REVISED -			823	07 BRIDGE REPAIRS 2014-3	WAYNE	60	34	
Default	PLOT DATE = 12/6/2013	CHECKED - MEA	REVISED -			CONTRACT NO. 74618		ILLINOIS FED. AID PROJECT			
		DATE - 08/13/2013	REVISED -			SCALE: N/A	SHEET 13 OF 35 SHEETS	STA.	TO STA.		