

STATE OF ILLINOIS
DEPARTMENT OF TRANSPORTATION
DIVISION OF HIGHWAYS

**PROPOSED
HIGHWAY PLANS**

FAP ROUTE 328 (US 45)
SECTION (8,9,10)RS-2
PROJECT ACNHPP - 0328 (034)
HMA RESURFACING
WAYNE COUNTY

C-97-035-11

F.A.P. RTE.	SECTION	COUNTY	TOTAL SHEETS	SHEET NO.
328	(8,9,10)RS-2	Wayne	23	1
		ILLINOIS	CONTRACT NO. 74512	

FOR INDEX OF SHEETS, SEE SHEET NO. 2

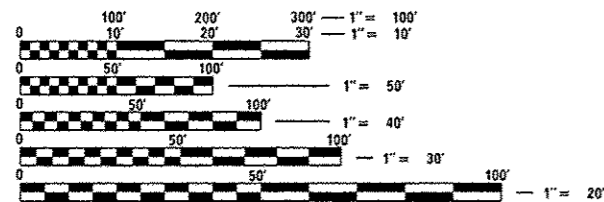
STATION EQUATIONS

STA 497+02.80 BK = STA 499+22.70 AH
STA 547+41.00 BK = STA 547+29.00 AH
STA 595+66.10 BK = STA 595+91.80 AH
STA 608+20.10 BK = STA 608+33.90 AH
STA 762+13.20 BK = STA 762+05.10 AH

BRIDGE OMISSIONS

SN 096-0068: STA 380+00 TO STA 388+74
SN 096-2010: STA 408+44 TO STA 411+30
SN 096-2012: STA 507+00 TO STA 508+16
SN 096-0020: STA 719+10 TO STA 719+94
SN 096-0019: STA 884+90 TO STA 892+30

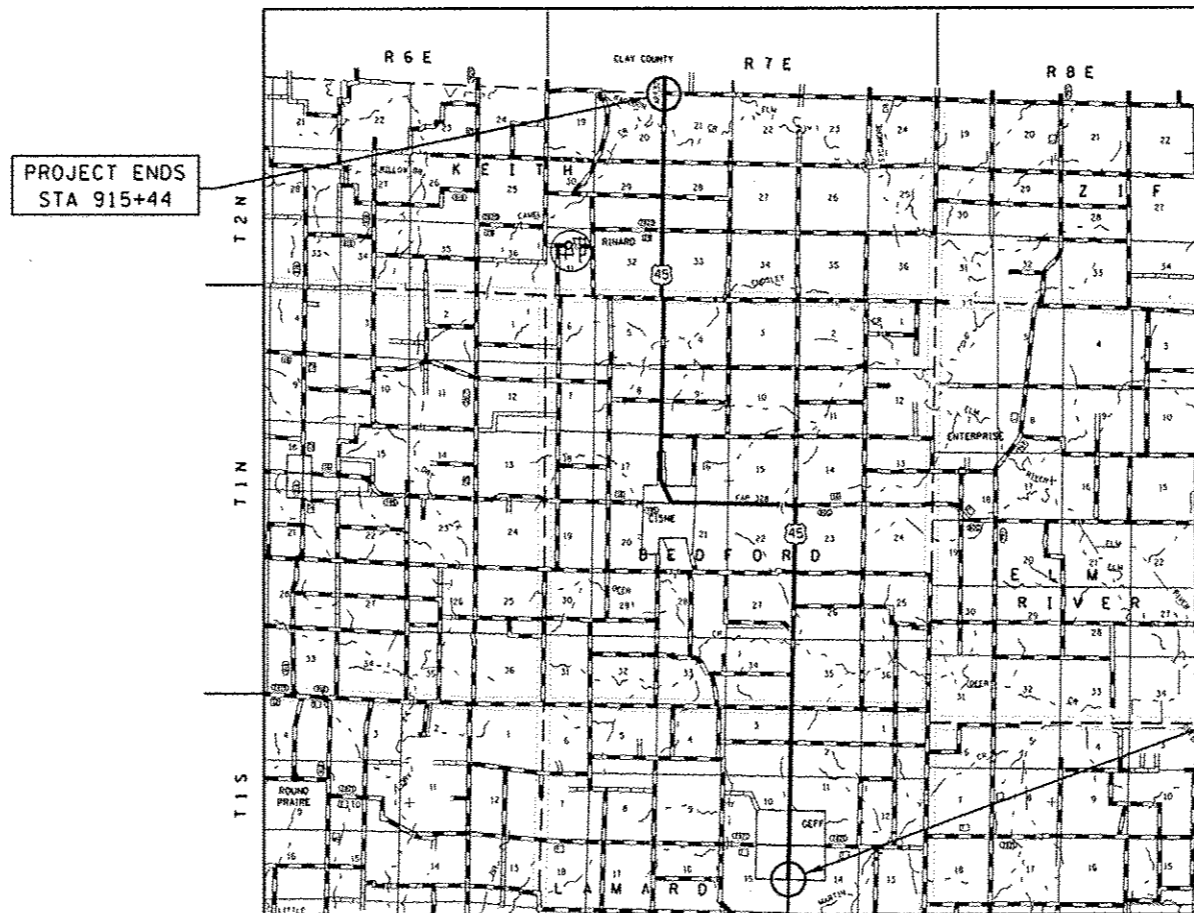
ADT (2009) = 2,182



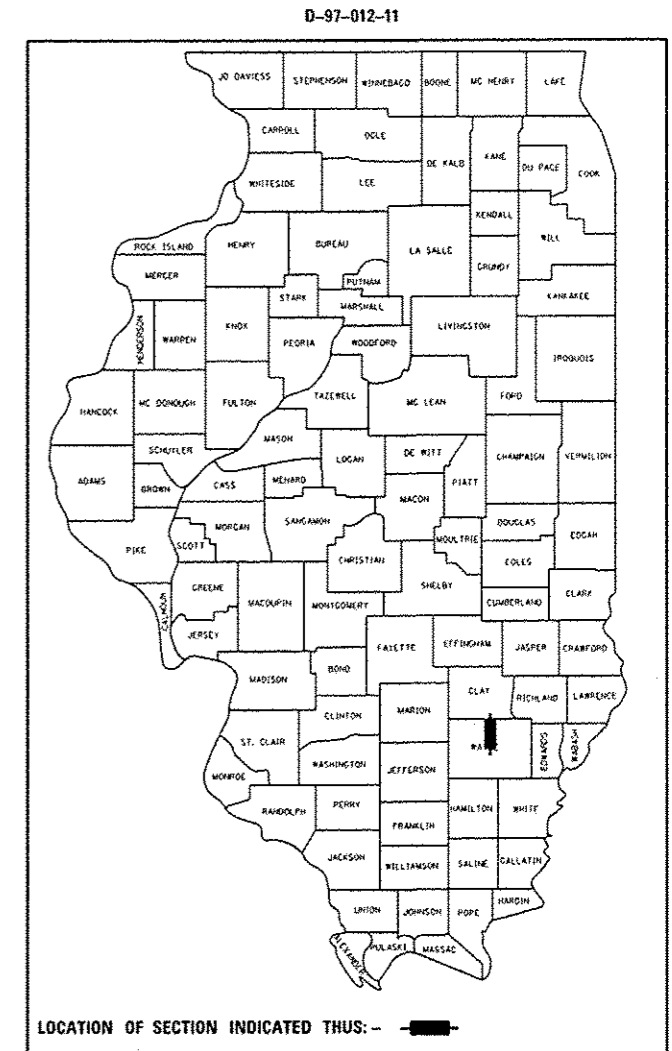
FULL SIZE PLANS HAVE BEEN PREPARED USING STANDARD ENGINEERING SCALES. REDUCED SIZED PLANS WILL NOT CONFORM TO STANDARD SCALES. IN MAKING MEASUREMENTS ON REDUCED PLANS, THE ABOVE SCALES MAY BE USED.

J.U.L.I.E.
JOINT UTILITY LOCATION INFORMATION FOR EXCAVATION
1-800-892-0123
OR 811

PROJECT ENGINEER: MARK DAUGHERTY
PROJECT MANAGER: BRIAN BIERMAN
PHONE: (217)-342-8341
CONTRACT NO. 74512



GROSS LENGTH = 69,955 FT. = 13.25 MILE
NET LENGTH = 67,855 FT. = 12.85 MILE



STATE OF ILLINOIS
DEPARTMENT OF TRANSPORTATION
DIVISION OF HIGHWAYS

SUBMITTED DEC. 6 2013
Roger L. Dinschell
DEPUTY DIRECTOR OF HIGHWAYS, REGION ENGINEER

Jan 24 2014
John D. Baranzelli PE, SE
acting ENGINEER OF DESIGN AND ENVIRONMENT

Jan 24 2014
Omer Osman PE, SE
DIRECTOR OF HIGHWAYS, CHIEF ENGINEER

PRINTED BY THE AUTHORITY
OF THE STATE OF ILLINOIS

GENERAL NOTES

SHORT-TERM PAVEMENT MARKING SHALL BE APPLIED AS FOLLOWS:
TEMPORARY TAPE SHALL BE USED ON THE SURFACE COURSE AND PAINT SHALL BE USED ON THE MILLED SURFACE.

THE TOTAL QUANTITY OF PAINT PAVEMENT MARKING - LINE 4" CONSISTS OF 40,583 FEET OF YELLOW AND 133,288 FEET OF WHITE. THE TOTAL QUANTITY OF PREFORMED PLASTIC PAVEMENT MARKING, TYPE B - LINE 6" CONSISTS OF 50 FEET OF WHITE AND IS FOR THE CROSS-WALK AT LAFAYETTE STREET IN GEFF.

RAISED REFLECTIVE PAVEMENT MARKERS SHALL CONSIST OF 848 TWO-WAY AMBER MARKERS AND 123 ONE-WAY CRYSTAL MARKERS. ONE-WAY CRYSTAL MARKERS SHALL BE PLACED IN EACH LANE AND SPACED EVERY 40' JUST INSIDE THE WHITE EDGE LINE ON EACH CURVE. THE ONE-WAY CRYSTAL MARKER LIMITS SHALL BE THE P.C. AND P.T. OF EACH CURVE.

THE CONTRACTOR SHALL PROVIDE INTERNET ACCESS TO THE HOT-MIX ASPHALT PLANT QUALITY CONTROL LAB SO THAT HOT-MIX ASPHALT PLANT REPORTS CAN BE E-MAILED TO THE DISTRICT HEADQUARTERS. THIS WORK SHALL BE INCLUDED IN THE COST OF ALL HOT-MIX ASPHALT ITEMS.

THE CONTRACTOR SHALL USE EITHER RC-70 OR AN EMULSIFIED POLYMER PRIME SS-1HP OR SS-1H FOR THE PAY ITEM BITUMINOUS MATERIALS (PRIME COAT).

THE HMA PAY FOR PERFORMANCE SPECIAL PROVISION SHALL APPLY TO HMA SURFACE COURSE.

AGGREGATE WEDGE SHOULDER, TYPE B SHALL BE CRUSHED STONE, CRUSHED CONCRETE OR RAP. AGGREGATE SURFACE COURSE, TYPE B SHALL BE CRUSHED STONE OR CRUSHED CONCRETE. RAP SHALL NOT BE USED AS AGGREGATE WEDGE SHOULDER, TYPE B WITHIN THE VILLAGE LIMITS OF GEFF AND CISNE.

THE PAY ITEM TEMPORARY RAMP HAS BEEN INCLUDED FOR THE CONSTRUCTION OF TEMPORARY RAMPS IN ACCORDANCE WITH ARTICLE 406.08 OF THE STANDARD SPECIFICATIONS. THE CONTRACT UNIT PRICE PER SQUARE YARD FOR TEMPORARY RAMP SHALL INCLUDE BOTH THE INSTALLATION AND THE REMOVAL OF THE RAMPS.

THE FOLLOWING MIXTURE REQUIREMENTS ARE APPLICABLE TO THIS PROJECT:

APPLICATION	AC/PG	DESIGN AIR VOIDS	MIXTURE COMPOSITION	FRICTION AGGREGATE
SURFACE COURSE	PG 64-22	4.0% @ N=70	IL - 9.5	MIXTURE C
INCIDENTAL SURFACE	PG 64-22	4.0% @ N=70	IL - 9.5	MIXTURE C
PAVEMENT PATCHING	PG 64-22	4.0% @ N=70	IL - 19.0	N/A

INDEX OF SHEETS

SHEET NO	TITLE
1	COVER SHEET
2	GENERAL NOTES, INDEX OF SHEETS, LIST OF STANDARDS
3-4	SUMMARY OF QUANTITIES
5	TYPICAL SECTIONS
6-7	SCHEDULES
8	PAVING DETAILS
9-11	ENTRANCE SCHEDULE
12-23	PLAN SHEETS

THE FOLLOWING STANDARDS ARE A PART OF THESE PLANS AND ARE INCLUDED FOLLOWING THE LAST NUMBERED SHEET OF THE PLANS.

STD. NO.	DESCRIPTION
000001-06	STANDARD SYMBOLS, ABBREVIATIONS AND PATTERNS
001006	DECIMAL OF AN INCH AND OF A FOOT
442201-03	CLASS C AND D PATCHES
701006-05	OFF-RD OPERATIONS, 2L, 2W, 15' TO 24" FROM PAVEMENT EDGE
701011-04	OFF-RD MOVING OPERATIONS, 2L, 2W, DAY ONLY
701201-04	LANE CLOSURE, 2L, 2W, DAY ONLY, FOR SPEEDS >= 45 MPH
701301-04	LANE CLOSURE, 2L, 2W, SHORT TIME OPERATIONS
701306-03	LANE CLOSURE, 2L, 2W, SLOW MOVING OPERATIONS DAY ONLY, FOR SPEEDS >= 45 MPH
701311-03	LANE CLOSURE, 2L, 2W MOVING OPERATIONS-DAY ONLY
701336-06	LANE CLOSURE, 2L, 2W, WORK AREAS IN SERIES, FOR SPEEDS >= 45 MPH
701901-03	TRAFFIC CONTROL DEVICES
780001-04	TYPICAL PAVEMENT MARKINGS
781001-03	TYPICAL APPLICATIONS RAISED REFLECTIVE PAVEMENT MARKERS

FILE NAME = c:\pr-work\p\idat\stefanek\0249366\0	USER NAME = stefanek	DESIGNED -	REVISED -	STATE OF ILLINOIS DEPARTMENT OF TRANSPORTATION	GENERAL NOTES & INDEX OF SHEETS		F.A.P. RTE.	SECTION	COUNTY	TOTAL SHEETS	SHEET NO.	
	74012-shc-gennote.dgn	DRAWN -	REVISED -		328	18.9.10RS-2	Wayne	23	2			
	PLOT SCALE = 1/8" = 1' / 1"	CHECKED -	REVISED -		SCALE: NA		SHEET NO. 1 OF 1 SHEETS		STA.	TO STA.	CONTRACT NO. 74512	
	PLOT DATE = 12/8/2013	DATE -	REVISED -		ILLINOIS FED. AID PROJECT							

SUMMARY OF QUANTITIES			TOTAL QUANTITIES	CONSTRUCTION TYPE CODE		
CODE NO	ITEM	UNIT		0005 80% FED 20% ST		
40200800	AGGREGATE SURFACE COURSE, TYPE B	TON	189	189		
40600100	BITUMINOUS MATERIALS (PRIME COAT)	GALLON	19810	19810		
40600300	AGGREGATE (PRIME COAT)	TON	396	396		
40600895	CONSTRUCTING TEST STRIP	EACH	1	1		
40600982	HOT-MIX ASPHALT SURFACE REMOVAL - BUTT JOINT	SO YD	231	231		
40600990	TEMPORARY RAMP	SO YD	173	173		
40603315	HOT-MIX ASPHALT SURFACE COURSE, MIX "C", N70	TON	16640	16640		
40800050	INCIDENTAL HOT-MIX ASPHALT SURFACING	TON	133	133		
44000155	HOT-MIX ASPHALT SURFACE REMOVAL, 1 1/2"	SO YD	18169	18169		
44201811	CLASS D PATCHES, TYPE I, 14 INCH	SO YD	40	40		
44201815	CLASS D PATCHES, TYPE II, 14 INCH	SO YD	1693	1693		
44201819	CLASS D PATCHES, TYPE III, 14 INCH	SO YD	69	69		
44201821	CLASS D PATCHES, TYPE IV, 14 INCH	SO YD	153	153		
48102100	AGGREGATE WEDGE SHOULDER, TYPE B	TON	2758	2758		

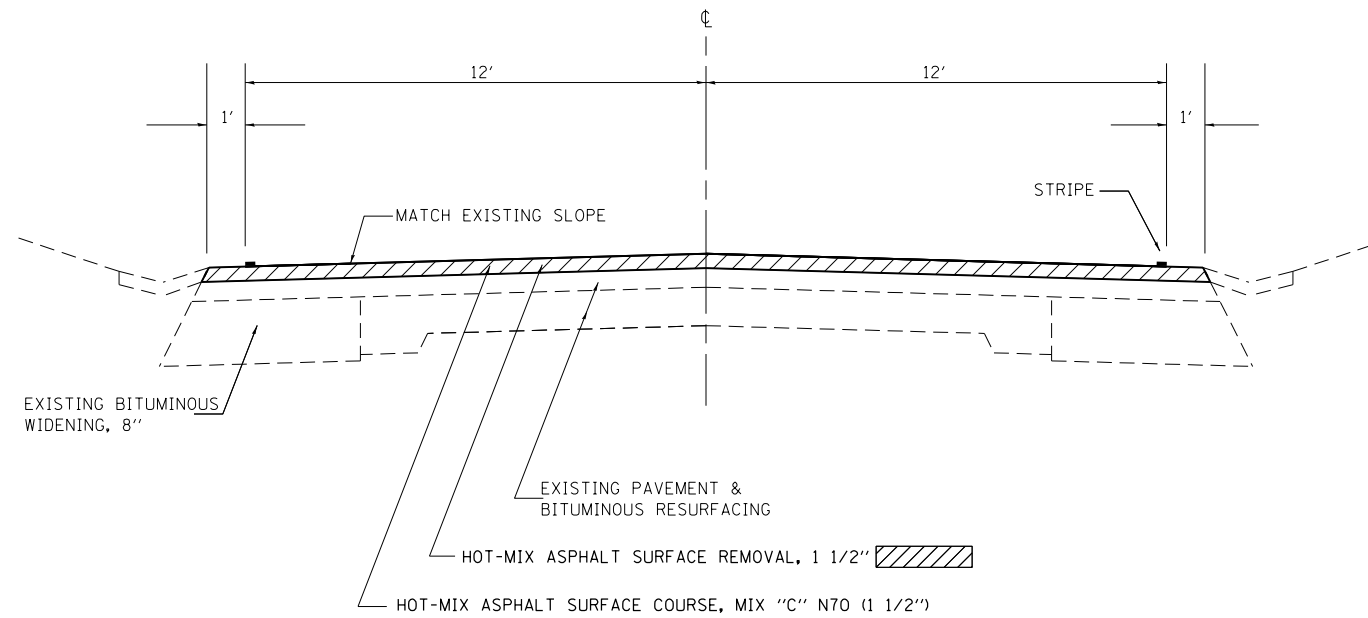
SUMMARY OF QUANTITIES			TOTAL QUANTITIES	CONSTRUCTION TYPE CODE		
CODE NO	ITEM	UNIT		0005 80% FED 20% ST		
67000500	ENGINEER'S FIELD OFFICE, TYPE B	CAL MO	4	4		
67100100	MOBILIZATION	L SUM	1	1		
70100450	TRAFFIC CONTROL AND PROTECTION, STANDARD 701201	L SUM	1	1		
70100460	TRAFFIC CONTROL AND PROTECTION, STANDARD 701306	L SUM	1	1		
70103815	TRAFFIC CONTROL SURVEILLANCE	CAL DA	15	15		
70300100	SHORT TERM PAVEMENT MARKING	FOOT	13571	13571		
70301000	WORK ZONE PAVEMENT MARKING REMOVAL	SO FT	2262	2262		
* 78001110	PAINT PAVEMENT MARKING - LINE 4"	FOOT	173871	173871		
* 78003130	PREFORMED PLASTIC PAVEMENT MARKING, TYPE B - LINE 6"	FOOT	50	50		
* 78100100	RAISED REFLECTIVE PAVEMENT MARKER	EACH	971	971		
X4401198	HOT-MIX ASPHALT SURFACE REMOVAL, VARIABLE DEPTH	SO YD	179932	179932		
X7015005	CHANGEABLE MESSAGE SIGN	CAL DA	28	28		

14

12

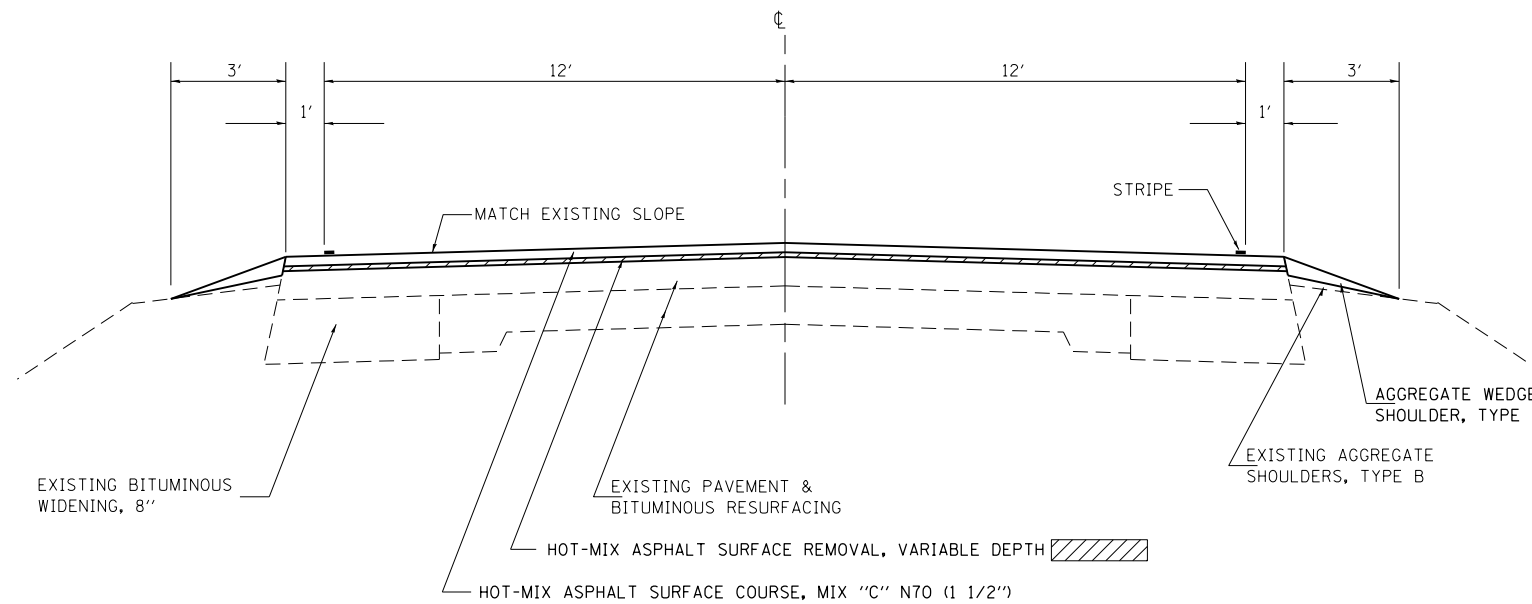
* SPECIALTY ITEM

FILE NAME =	USER NAME = staffennk	DESIGNED -	REVISED -	STATE OF ILLINOIS DEPARTMENT OF TRANSPORTATION	SUMMARY OF QUANTITIES	F.A.P. RTE.	SECTION	COUNTY	TOTAL SHEETS	SHEET NO.	
c:\p\work\pwidot\staffennk\08249366\0	74512-ahtr-000.dgn	DRAWN -	REVISED -			328	18,910RS-2	Wayne	23	3	
	PLOT SCALE = 1/80,000 1" = 1 mi.	CHECKED -	REVISED -			CONTRACT NO. 74512					
	PLOT DATE = 12/5/2013	DATE -	REVISED -			ILLINOIS FED. AID PROJECT					
				SCALE: NA		SHEET NO. 1 OF 1 SHEETS		STA. TO STA.			



TYPICAL SECTION

- STA 350+00 TO STA 369+10: • EXISTING LT & RT V-GUTTER
- STA 403+44 TO STA 408+44: • EXISTING LT & RT V-GUTTER
- STA 411+30 TO STA 414+22: • EXISTING LT & RT V-GUTTER
- STA 505+05 TO STA 507+00: • EXISTING LT & RT PCC SHOULDER
- STA 508+16 TO STA 509+91: • EXISTING LT & RT PCC SHOULDER
- STA 573+40 TO STA 596+50: • EXISTING RT V-GUTTER & INLETS THROUGH CISNE
- STA 717+50 TO STA 719+10: • EXISTING LT & RT PCC SHOULDER
- STA 719+94 TO STA 722+96: • EXISTING LT & RT PCC SHOULDER



TYPICAL SECTION

- STA 213+50 TO STA 350+00
- STA 369+10 TO STA 380+00
- STA 388+74 TO STA 403+44
- STA 414+22 TO STA 505+05
- STA 509+91 TO STA 573+40
- STA 596+50 TO STA 717+05
- STA 722+96 TO STA 884+90
- STA 892+30 TO STA 915+44

FILE NAME =	USER NAME = steffenmk	DESIGNED -	REVISED -
ct:\pw\work\p\dot\steffenmk\d0249366\0774512-sh-typical.dgn		DRAWN -	REVISED -
PLOT SCALE = 100.0000' / in.		CHECKED -	REVISED -
PLOT DATE = 12/5/2013		DATE -	REVISED -

STATE OF ILLINOIS
DEPARTMENT OF TRANSPORTATION

TYPICAL SECTIONS

SCALE: NA SHEET NO. 1 OF 1 SHEETS STA. TO STA.

F.A.P. RTE.	SECTION	COUNTY	TOTAL SHEETS	SHEET NO.
328	(8,910)RS-2	Wayne	23	5
CONTRACT NO. 74512			ILLINOIS FED. AID PROJECT	

PATCHING SCHEDULE

LANE	CLASS D PATCHES, TYPE I, 14 INCH				CLASS D PATCHES, TYPE II, 14 INCH				CLASS D PATCHES, TYPE III, 14 INCH				CLASS D PATCHES, TYPE IV, 14 INCH			
	SO	YD	SO	YD	SO	YD	SO	YD	SO	YD	SO	YD	SO	YD	SO	YD
NORTHBOUND	20		893		69.0		60.0									
SOUTHBOUND	20		800		0.0		93.0									
TOTALS:	40		1693		69		153									

STRIPING SCHEDULE

STATION TO STATION			PAINT PAVEMENT MARKING - LINE 4"	PREFORMED PLASTIC PAVEMENT MARKING, TYPE B - LINE 6"	SHORT-TERM PAVEMENT MARKING	WORK ZONE PAVEMENT MARKING REMOVAL	RAISED REFLECTIVE PAVEMENT MARKER	
			FOOT	FOOT	FOOT	SO FT	EACH	
213+50	TO	380+00	36428	50	3330	555	208	
380+00	TO	388+74	BRIDGE OMISSION					
388+74	TO	408+44	4179	-	394	66	25	
408+44	TO	411+30	BRIDGE OMISSION					
411+30	TO	497+03	18781	-	1715	286	147	
497+02.80	TO	499+22.70	BRIDGE OMISSION					
499+23	TO	507+00	1749	-	155	26	10	
507+00	TO	508+16	BRIDGE OMISSION					
508+16	TO	547+41	8831	-	785	131	49	
547+41.00	TO	547+29.00	BRIDGE OMISSION					
547+29	TO	595+66	10409	-	967	161	73	
595+66.10	TO	595+91.80	BRIDGE OMISSION					
595+92	TO	608+20	2708	-	246	41	46	
608+20.10	TO	608+33.90	BRIDGE OMISSION					
608+34	TO	719+10	24609	-	2215	369	138	
719+10	TO	719+94	BRIDGE OMISSION					
719+94	TO	762+13	8943	-	844	141	93	
762+13.20	TO	762+05.10	BRIDGE OMISSION					
762+05	TO	884+90	27328	-	2457	409	154	
884+90	TO	892+30	BRIDGE OMISSION					
892+30	TO	915+44	5207	-	463	77	29	
NO PASSING ZONES								
SOUTHBOUND:								
323+53	TO	328+65	512	-	-	-	-	
350+80	TO	372+98	2218	-	-	-	-	
397+52	TO	415+13	1761	-	-	-	-	
424+24	TO	431+90	766	-	-	-	-	
715+80	TO	748+05	3225	-	-	-	-	
755+60	TO	762+24	664	-	-	-	-	
780+90	TO	786+50	560	-	-	-	-	
806+30	TO	813+44	714	-	-	-	-	
834+40	TO	840+00	560	-	-	-	-	
860+45	TO	866+13	568	-	-	-	-	
903+07	TO	910+65	758	-	-	-	-	
NORTHBOUND:								
312+86	TO	319+01	615	-	-	-	-	
340+90	TO	362+96	2206	-	-	-	-	
388+24	TO	404+22	1598	-	-	-	-	
412+00	TO	421+00	900	-	-	-	-	
705+54	TO	737+42	3188	-	-	-	-	
748+67	TO	756+10	743	-	-	-	-	
770+00	TO	777+20	720	-	-	-	-	
796+54	TO	804+50	796	-	-	-	-	
824+43	TO	829+40	497	-	-	-	-	
851+28	TO	855+77	449	-	-	-	-	
893+42	TO	900+25	683	-	-	-	-	
TOTALS:			173871	50	13571	2262	971	

PAVEMENT SCHEDULE

STATION TO STATION			LENGTH	WIDTH	BITUMINOUS MATERIALS (PRIME COAT)	AGGREGATE (PRIME COAT)	TEMPORARY RAMP	HOT-MIX ASPHALT SURFACE REMOVAL - BUTT JOINT	HOT-MIX ASPHALT SURFACE REMOVAL, VARIABLE DEPTH	HOT-MIX ASPHALT SURFACE REMOVAL, 1 1/2"	HMA SURFACE COURSE, MIX "C" NTO	AGGREGATE SHOULDERS, TYPE B	ADDITIONAL COMMENTS
US 51			FEET	FEET	GAL	TON	SO YD	SO YD	SO YD	SO YD	TON	TON	
213+50	TO	228+62	1512	26	437	8.7	14	58	4368	-	367	62	
228+62	TO	231+18	256	26	131	2.6	-	-	1308	-	110	9	10' WIDE LT & RT HMA SHOULDER
231+18	TO	232+50	132	26	53	1.1	-	-	528	-	44	6	10' WIDE RT HMA SHOULDER
232+50	TO	350+00	11750	26	3394	67.9	-	-	33944	-	2851	521	
350+00	TO	369+10	1910	26	552	11.0	-	-	-	5518	463	-	
369+10	TO	380+00	1090	26	315	6.3	14	58	3149	-	265	49	
380+00	TO	388+74	874	26	BRIDGE OMISSION								
388+74	TO	403+44	1470	26	425	8.5	14	58	4247	-	357	67	
403+44	TO	408+44	500	26	144	2.9	14	-	-	1444	121	-	
408+44	TO	411+30	286	26	BRIDGE OMISSION								
411+30	TO	414+22	292	26	84	1.7	14	-	-	844	71	-	
414+22	TO	497+03	8280.8	26	2392	47.8	-	-	23922	-	2009	370	
497+02.8	TO	499+22.7	STATION EQUATION										
499+23	TO	505+05	582.3	26	168	3.4	-	-	1682	-	141	28	
505+05	TO	507+00	195	26	56	1.1	14	-	-	563	47	-	
507+00	TO	508+16	116	26	BRIDGE OMISSION								
508+16	TO	509+91	175	26	51	1.0	14	-	-	506	42	-	
509+91	TO	547+41	3750	26	1083	21.7	-	-	10833	-	910	173	
547+41.0	TO	547+29.0	STATION EQUATION										
547+29	TO	573+40	2611	26	754	15.1	-	-	7543	-	634	117	
573+40	TO	586+61	1321	26	382	7.6	-	-	-	3816	321	-	
586+61	TO	587+50	89	26	26	0.5	-	-	-	257	22	-	
587+50	TO	595+66	816.1	26	372	7.4	-	-	-	3718	312	-	15' WIDE LT HMA SHOULDER
595+66.1	TO	595+91.8	STATION EQUATION										
595+92	TO	596+50	58.2	26	17	0.3	-	-	-	168	14	-	
596+50	TO	608+20	1170.1	26	338	6.8	-	-	3380	-	284	43	
608+20.1	TO	608+33.9	STATION EQUATION										
608+34	TO	717+50	10916.1	26	3154	63.1	-	-	31535	-	2649	479	
717+50	TO	719+10	160	26	46	0.9	14	-	-	462	39	-	
719+10	TO	719+94	84	26	BRIDGE OMISSION								
719+94	TO	722+96	302	26	87	1.7	14	-	-	872	73	-	
722+96	TO	762+13	3917.2	26	1132	22.6	-	-	11316	-	951	175	
762+13.2	TO	762+05.1	STATION EQUATION										
762+05	TO	884+90	12284.9	26	3549	71.0	14	-	35490	-	2981	553	
884+90	TO	892+30	740	26	BRIDGE OMISSION								
892+30	TO	915+44	2314	26	668	13.4	29	58	6685	-	562	105	
TOTALS:					19810	396	173	231	179932	18169	16640	2758	

PROTECTING OR RESETTING SURVEY MARKERS

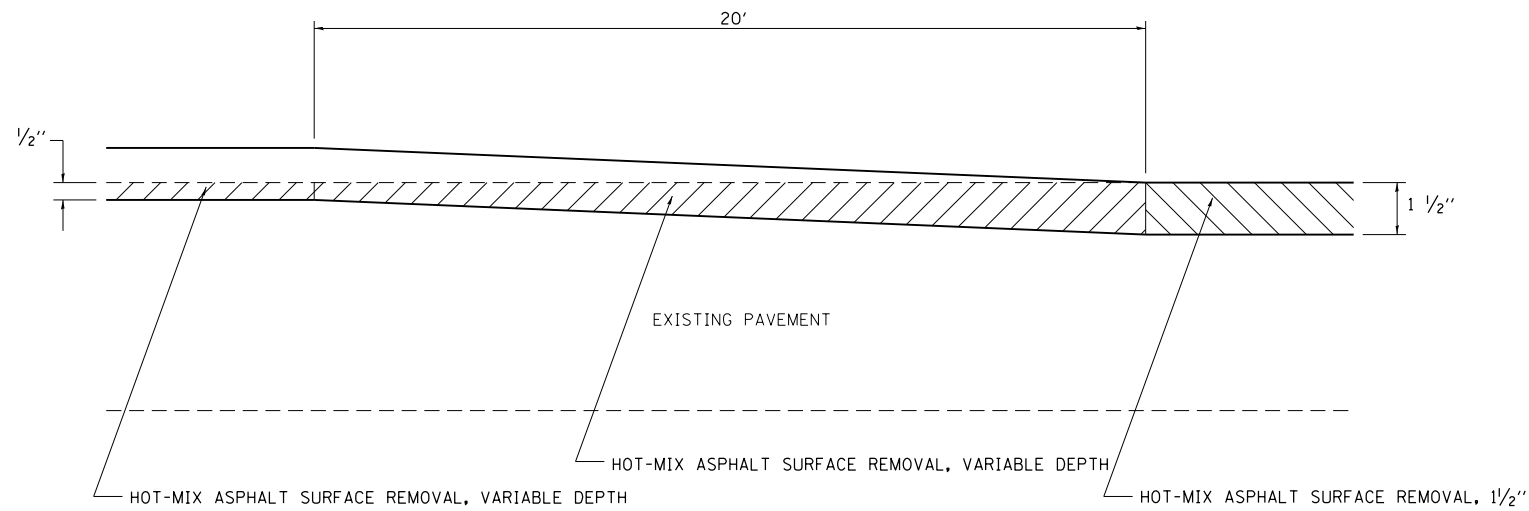
LOCATION	OFFSET	DESCRIPTION	EACH
915+63	4.0 RT	IRON PIN W/ IDOT CAP	1
P. O. T. 910+67	0	MAG NAIL W/ WASHER	1
P. T. 907+42.89	0	MAG NAIL W/ WASHER	1
902+43	0	MAG NAIL W/ ALUM. TAG	1
P. C. 897+42.9	0	MAG NAIL W/ WASHER	1
P. T. 897+02	0	MAG NAIL W/ WASHER	1
P. I. 893+52	0	MAG NAIL W/ WASHER	1
P. T. 877+00	0	MAG NAIL W/ WASHER	1
P. I. 872+00	0	MAG NAIL W/ WASHER	1
P. C. 867+00	0	MAG NAIL W/ WASHER	1
P. O. T. 863+00	0	MAG NAIL W/ WASHER	1
862+89	0	IRON PIN W/ IDOT CAP	1
P. O. T. 739+69.87	0	MAG NAIL W/ WASHER	1
P. T. 733+04.05	0	MAG NAIL W/ WASHER	1
P. I. 728+04.45	0	MAG NAIL W/ WASHER	1
P. C. 723+04.45	0	MAG NAIL W/ WASHER	1
P. O. T. 708+15.31	0	MAG NAIL W/ WASHER	1
547+29	0	MAG NAIL W/ WASHER	1
P. O. T. 521+00	0	MAG NAIL W/ WASHER	1
520+61.86	10.73 RT	MAG NAIL W/ WASHER	1
P. T. 497+02.80 = 499+27.14	0	MAG NAIL W/ WASHER	1
467+70	0.9 RT	MAG NAIL W/ WASHER	1
440+80	1.0 RT	IRON PIN W/ IDOT CAP	1
P. O. T. 422+49.47	0	MAG NAIL W/ WASHER	1
414+49.04	1.8 RT	IRON PIN W/ IDOT CAP	1
P. I. 405+00 = 405+06.39	0	MAG NAIL W/ ALUM. TAG	1
P. T. 404+64.99	0	MAG NAIL W/ ALUM. TAG	1
P. I. 399+65	0	MAG NAIL W/ ALUM. TAG	1
P. T. 393+08	0	MAG NAIL W/ WASHER	1
P. O. T. 369+09.57	0	MAG NAIL W/ WASHER	1
361+80	0	IRON PIN W/ IDOT CAP	1
335+50	9.6 RT	IRON PIN W/ IDOT CAP	1
229+40	0	IRON PIN W/ IDOT CAP	1
218+00	0	P. T. DISK	1
208+00	0	P. C. DISK	1
			35

FILE NAME =	USER NAME = steffenmk	DESIGNED -	REVISED -
ct:\pw\work\p\dot\steffenmk\d0249366\074512-sh-t-schedules.dgn		DRAWN -	REVISED -
	PLOT SCALE = 100.0000' / in.	CHECKED -	REVISED -
	PLOT DATE = 12/5/2013	DATE -	REVISED -

**STATE OF ILLINOIS
DEPARTMENT OF TRANSPORTATION**

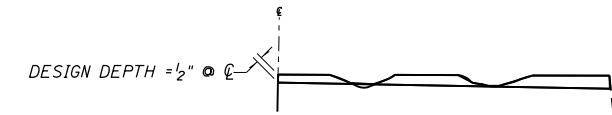
SCHEDULES	
SCALE: NA	SHEET NO. 2 OF 2 SHEETS
STA.	TO STA.

F.A.P. RTE.	SECTION	COUNTY	TOTAL SHEETS	SHEET NO.
328	(8,9,10)RS-2	Wayne	23	7
			CONTRACT NO. 74512	
ILLINOIS FED. AID PROJECT				



TRANSITION DETAIL

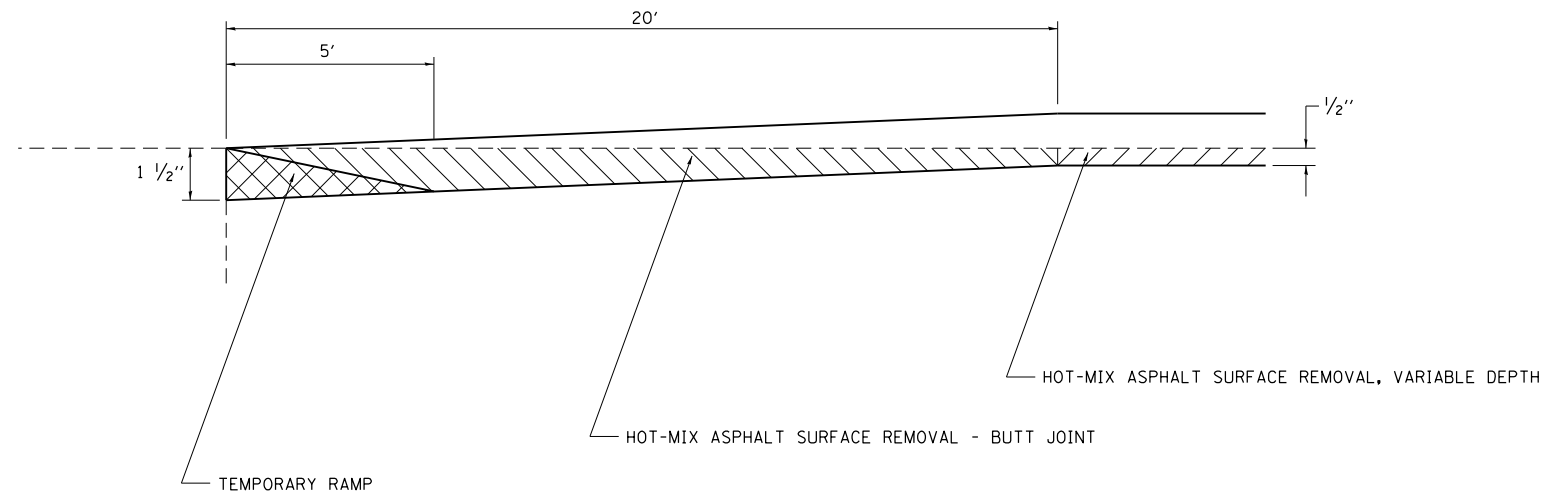
- STA 349+80 TO STA 350+00
- STA 369+10 TO STA 369+30
- STA 403+24 TO STA 403+44
- STA 414+22 TO STA 414+42
- STA 504+85 TO STA 505+05
- STA 509+91 TO STA 510+11
- STA 573+40 TO STA 573+60
- STA 596+50 TO STA 596+70
- STA 717+05 TO STA 717+25
- STA 722+96 TO STA 723+16



NOTES:

1. MILLING SHALL BE DONE TO ATTAIN A $\frac{3}{16}$ " SLOPE IN CROWN SECTIONS
2. EXISTING S.E. AND S.E. TRANSITIONS SHALL BE MAINTAINED UNLESS OTHERWISE SHOWN ON THE PLANS.
3. MILLING TO THE BOTTOM OF WHEEL RUTS SHALL NOT BE NECESSARY UNLESS REQUIRED TO OBTAIN SLOPE OR THE DESIGN DEPTH AT CENTERLINE.
4. THE AVERAGE DEPTH OF MILLING IS ESTIMATED TO BE $\frac{1}{2}$ " BUT MAY VARY IN ISOLATED LOCATIONS.

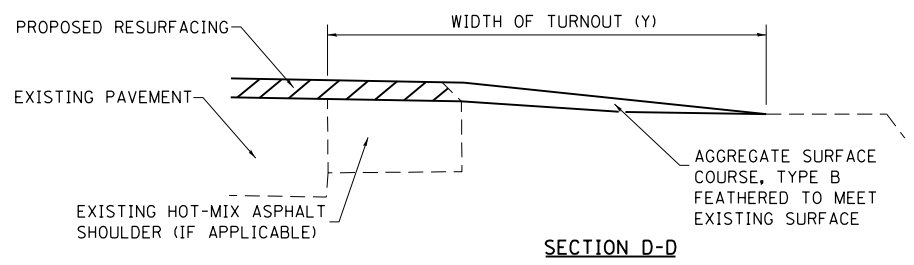
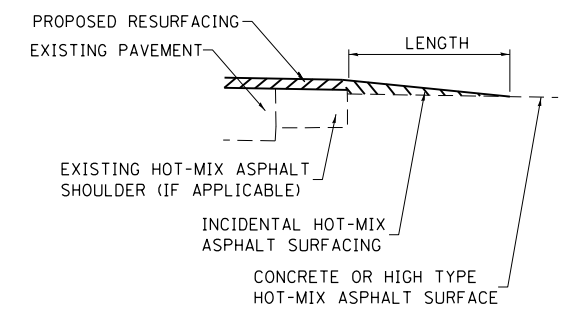
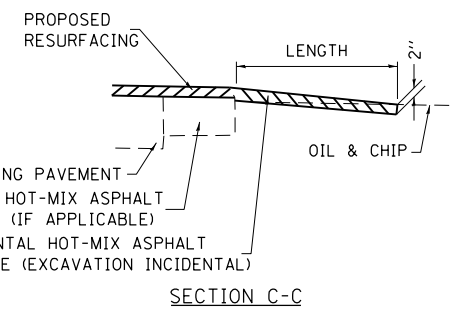
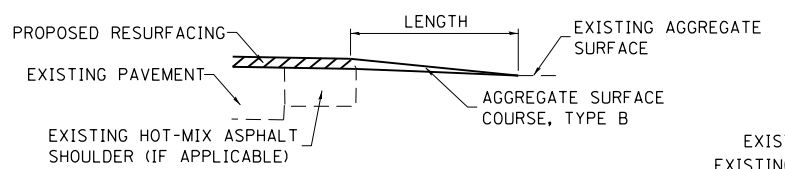
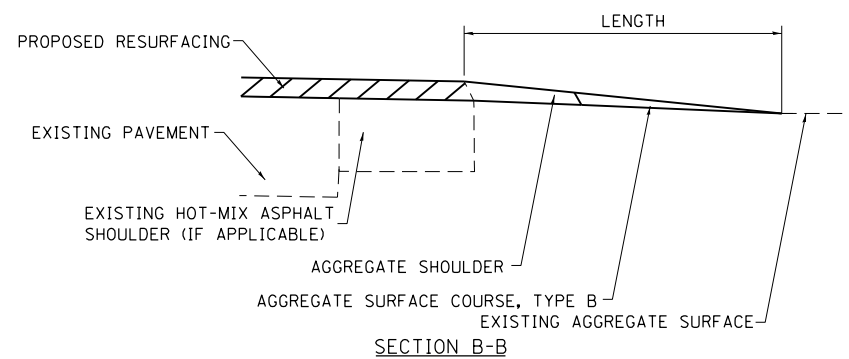
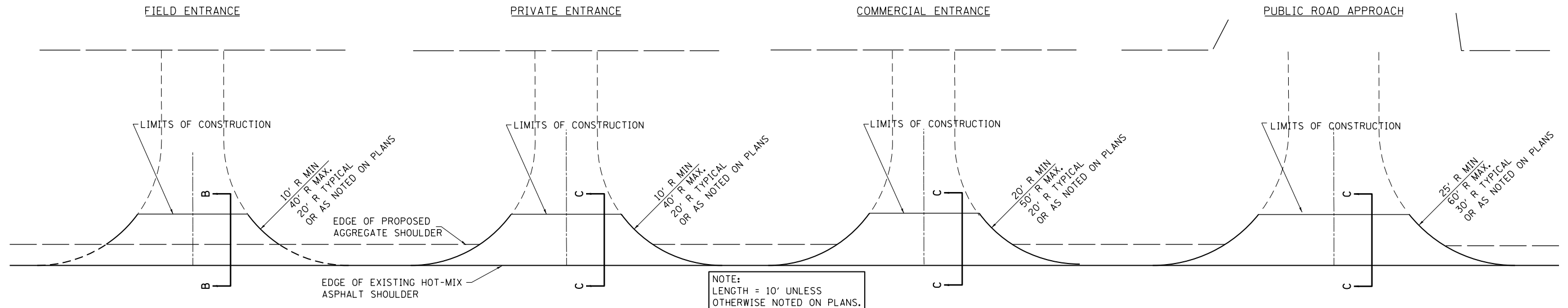
HMA SURFACE REMOVAL, VARIABLE DEPTH DETAIL



BUTT JOINT DETAIL

- STA 213+50 TO STA 213+70
- STA 379+80 TO STA 380+00
- STA 388+74 TO STA 388+94
- STA 915+24 TO STA 915+44

FILE NAME =	USER NAME = steffenmk	DESIGNED -	REVISED -	STATE OF ILLINOIS DEPARTMENT OF TRANSPORTATION	PAVING DETAILS			F.A.P. RTE.	SECTION	COUNTY	TOTAL SHEETS	SHEET NO.	
ci:\pw\work\p\dot\steffenmk\d0249366\074512-sh1-details.dgn		DRAWN -	REVISED -		SCALE: NA	SHEET NO. 1 OF 1 SHEETS	STA.	TO STA.	328	(8,910)RS-2	Wayne	23	8
	PLOT SCALE = 100.0000' / in.	CHECKED -	REVISED -							CONTRACT NO. 74512			
	PLOT DATE = 12/5/2013	DATE -	REVISED -		ILLINOIS FED. AID PROJECT								



TYPICAL SECTION AT MAILBOX TURNOUT

NOTE: SEE STANDARD 406201 FOR MAILBOX TURNOUT DETAILS

NOTES

THE COST OF THE ASPHALT MATERIALS, AND AGGREGATE (PRIME COAT) FOR ENTRANCES AND PUBLIC ROADS AND APPROACHES SHALL BE INCLUDED IN THE PAY ITEM INCIDENTAL HOT-MIX ASPHALT SURFACING.

THE COST OF EXCAVATION IS INCLUDED IN THE PAY ITEM INCIDENTAL HOT-MIX ASPHALT SURFACING.

IF THERE IS NOT EXISTING HOT-MIX ASPHALT SHOULDER THEN THE ENTRANCE TAPER STARTS AT THE EDGE OF EXISTING PAVEMENT.

THE COST OF THE BITUMINOUS MATERIALS AND AGGREGATE (PRIME COAT) FOR ENTRANCES AND PUBLIC ROAD APPROACHES SHALL BE INCLUDED IN THE PAY ITEM INCIDENTAL HOT-MIX ASPHALT SURFACING.

SIDE	STATION	TYPE	INCIDENTAL HOT-MIX ASPHALT SURFACING	AGGREGATE SURFACE COURSE, TYPE B
			TON	TON
RT	214+70	CE	2.0	
RT	216+10	CE	2.0	
RT	217+45	PRA	1.2	
RT	218+07	PE		1.2
LT	218+15	PE		1.0
LT	219+38	PE		1.1
LT	220+09	PE		0.7
RT	220+40	PRA	1.5	
LT	220+90	PE		0.8
LT	222+85	PRA	1.6	
RT	223+62	PE		0.7
LT	223+75	PE		0.7
LT	224+40	PE		0.7
LT	225+95	PRA	1.3	
RT	225+95	PRA	1.3	
LT	229+25	PRA	2.3	
RT	229+25	PRA	2.3	
LT	232+70	PRA	1.8	
RT	232+70	PRA	2.3	
RT	234+57	PE		1.5
LT	236+04	PRA	2.0	

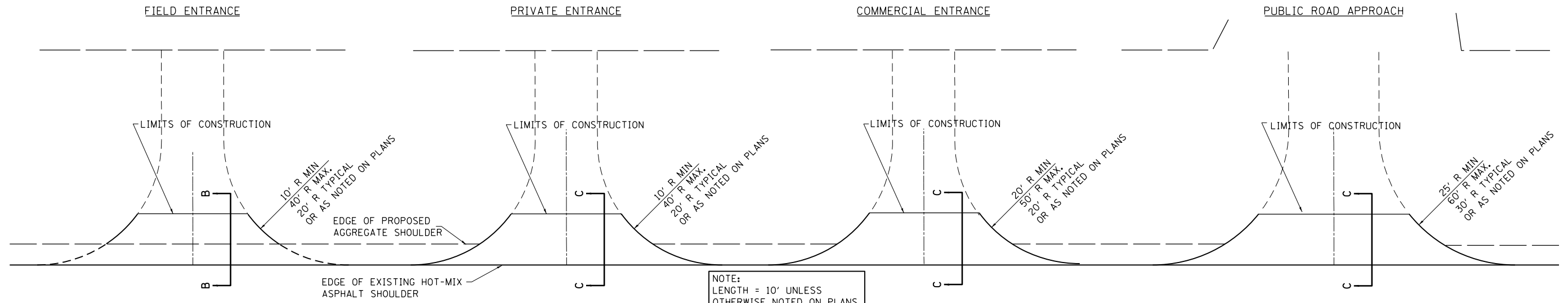
SIDE	STATION	TYPE	INCIDENTAL HOT-MIX ASPHALT SURFACING	AGGREGATE SURFACE COURSE, TYPE B
			TON	TON
RT	236+06	PRA	2.0	
RT	237+25	PE		0.9
LT	237+75	PRA	1.2	
RT	238+52	PE		1.2
RT	240+22	PE		1.2
RT	240+85	PE		1.7
RT	241+57	PE		1.5
LT	241+68	PRA	1.6	
LT	241+93	CE		0.8
RT	242+70	PE		1.0
LT	243+52	CE		0.8
RT	244+07	PE		0.9
RT	244+90	PE		1.4
RT	247+65	FE		1.4
LT	256+36	PE		0.9
RT	257+85	PE		1.7
LT	258+25	PE	1.2	
LT	261+08	PE		1.6
RT	262+11	PE		1.8
LT	265+13	CE		1.4
LT	267+18	CE		0.8

SIDE	STATION	TYPE	INCIDENTAL HOT-MIX ASPHALT SURFACING	AGGREGATE SURFACE COURSE, TYPE B
			TON	TON
LT	272+32	PE	1.4	
RT	272+36	FE		1.5
LT	282+17	FE		1.1
LT	308+95	PRA	1.6	
RT	308+95	PRA	1.6	
LT	310+95	FE		1.6
LT	315+65	FE		0.8
LT	320+75	CE	2.6	
LT	321+83	CE	2.2	
LT	329+00	FE		1.4
RT	329+05	PE		1.2
LT	334+30	CE		3.5
LT	335+45	PRA	1.8	
RT	335+45	PRA	1.8	
RT	342+50	PE		1.5
RT	346+13	PE		1.5
RT	347+00	PE	1.6	
RT	348+21	PE	1.4	
RT	348+45	FE		1.1
LT	373+50	FE		1.1
LT	374+62	PE		0.8

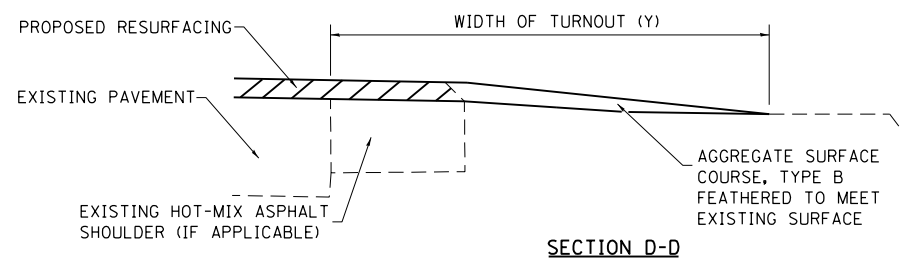
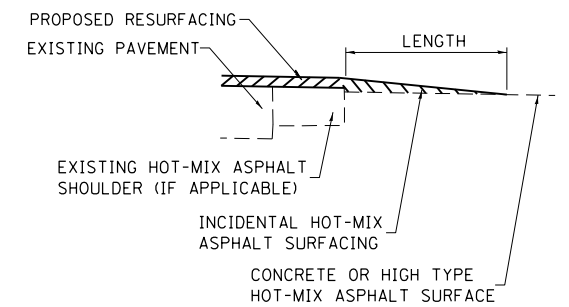
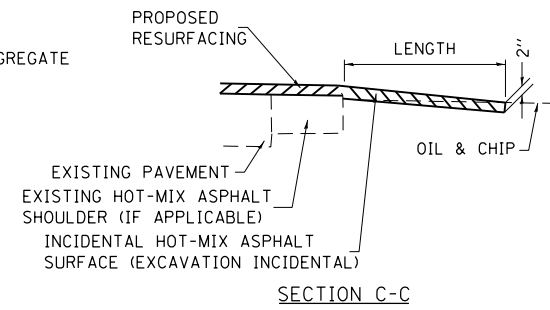
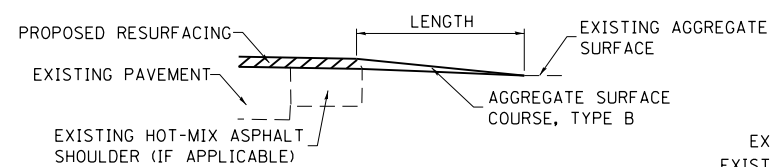
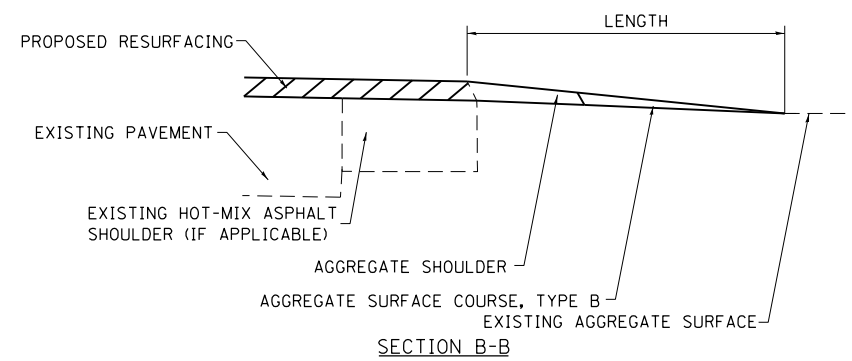
SIDE	STATION	TYPE	INCIDENTAL HOT-MIX ASPHALT SURFACING	AGGREGATE SURFACE COURSE, TYPE B
			TON	TON
RT	374+70	FE		0.8
LT	377+92	PE		1.6
RT	394+45	FE		0.9
LT	400+65	PRA	3.5	
LT	408+75	FE		1.2
LT	414+25	CE	1.3	
RT	414+25	PRA	2.1	
LT	421+40	FE		0.6
LT	422+30	PE		1.0
LT	423+73	PE		1.1
RT	423+90	FE		1.2
RT	441+73	PRA	2.2	
LT	441+80	PRA	2.5	
RT	447+13	FE		0.6
RT	452+25	CE	1.6	
RT	453+88	CE	1.9	
RT	464+40	FE		1.4
LT	469+69	CE	3.1	
LT	477+42	CE		2.5
LT	479+67	PE		1.5
LT	480+50	PE	1.4	

SIDE	STATION	TYPE	INCIDENTAL HOT-MIX ASPHALT SURFACING	AGGREGATE SURFACE COURSE, TYPE B
			TON	TON
RT	481+00	FE		1.0
LT	484+20	FE		1.3
LT	490+23	PRA	5.5	
RT	495+70	PRA	5.8	
RT	514+53	FE		1.8
LT	521+67	FE		1.9
LT	533+45	PE		1.6
LT	535+05	FE		1.6
RT	539+65	PE		1.9
LT	560+93	FE		1.4
RT	560+97	FE		1.6
LT	567+55	PE	1.4	
LT	568+61	CE	1.8	
LT	569+95	CE	1.4	
LT	570+82	CE	1.8	
LT	571+15	CE	1.8	
RT	599+57	PE	1.3	
RT	601+00	PE		1.7
RT	601+92	PE	1.4	
RT	602+70	PE	2.7	
RT	603+50	PE		1.3

FE=FIELD ENTRANCE PRA - PUBLIC ROAD APPROACH
 PE=PRIVATE ENTRANCE MBT - MAILBOX TURNOUT
 CE=COMMERCIAL ENTRANCE



NOTE:
LENGTH = 10' UNLESS
OTHERWISE NOTED ON PLANS.



TYPICAL SECTION AT MAILBOX TURNOUT

NOTE: SEE STANDARD 406201 FOR MAILBOX TURNOUT DETAILS

NOTES

THE COST OF THE ASPHALT MATERIALS, AND AGGREGATE (PRIME COAT) FOR ENTRANCES AND PUBLIC ROADS AND APPROACHES SHALL BE INCLUDED IN THE PAY ITEM INCIDENTAL HOT-MIX ASPHALT SURFACING.

THE COST OF EXCAVATION IS INCLUDED IN THE PAY ITEM INCIDENTAL HOT-MIX ASPHALT SURFACING.

IF THERE IS NOT EXISTING HOT-MIX ASPHALT SHOULDER THEN THE ENTRANCE TAPER STARTS AT THE EDGE OF EXISTING PAVEMENT.

THE COST OF THE BITUMINOUS MATERIALS AND AGGREGATE (PRIME COAT) FOR ENTRANCES AND PUBLIC ROAD APPROACHES SHALL BE INCLUDED IN THE PAY ITEM INCIDENTAL HOT-MIX ASPHALT SURFACING.

SIDE	STATION	TYPE	INCIDENTAL HOT-MIX ASPHALT SURFACING	
			TON	TON
RT	604+60	PE		1.9
LT	605+25	PRA	2.4	
RT	605+90	PE		1.3
RT	606+50	PE		1.4
RT	607+10	PE	1.6	
LT	607+20	CE		0.9
LT	607+83	CE		1.7
RT	607+90	PE		1.7
RT	608+44	PE		1.0
RT	609+07	PRA	0.9	
RT	609+35	PE		1.0
LT	609+45	CE	3.3	
RT	610+60	PE		1.2
RT	611+18	PE		1.3
RT	612+00	PE		1.0
RT	612+46	PE		1.1
RT	613+50	PE		1.2
RT	614+30	PE		1.1
RT	615+95	PE		0.9
LT	615+10	PE	1.2	
RT	615+28	PE		1.4

SIDE	STATION	TYPE	INCIDENTAL HOT-MIX ASPHALT SURFACING	
			TON	TON
RT	618+45	CE		1.2
RT	620+37	PE	1.1	
RT	621+98	PE	1.0	
LT	622+54	PE		0.9
RT	622+82	PE		1.1
RT	623+65	PE		0.9
RT	624+50	PE		1.4
RT	625+78	PE		1.2
RT	626+76	PE		1.1
RT	627+23	PE		1.1
RT	629+18	PE		1.2
LT	629+20	FE		1.2
RT	629+25	PE		1.0
RT	630+93	PE		1.4
RT	631+76	PE	1.1	
RT	632+50	CE	3.2	
RT	633+29	CE	2.6	
RT	634+78	PE		1.0
LT	641+78	FE		1.6
RT	642+82	FE		0.9
RT	648+86	PRA		2.9

SIDE	STATION	TYPE	INCIDENTAL HOT-MIX ASPHALT SURFACING	
			TON	TON
LT	649+35	PE		1.9
LT	663+25	PE		1.5
LT	669+10	CE	1.4	
LT	673+10	PE		1.4
LT	675+66	PRA	1.5	
RT	675+66	PRA		1.5
RT	688+92	FE		0.7
RT	696+75	FE		0.6
LT	702+02	PRA	1.3	
RT	702+04	PRA	1.3	
RT	704+01	FE		0.9
RT	704+52	PE		1.0
RT	705+30	PE		0.9
LT	713+15	PE		1.4
LT	714+15	PE		1.4
RT	714+15	PE		1.9
LT	725+70	FE		0.9
RT	725+47	PE		1.5
RT	726+28	PE		1.0
RT	727+90	PE		1.6
LT	728+85	CE		1.9

SIDE	STATION	TYPE	INCIDENTAL HOT-MIX ASPHALT SURFACING	
			TON	TON
RT	739+85	FE		1.1
LT	751+17	FE		1.7
LT	751+60	FE		2.0
RT	751+75	FE		1.0
RT	752+87	PE		1.2
RT	755+94	PRA	2.4	
LT	755+97	PRA	1.8	
LT	769+15	FE		1.4
RT	775+44	FE		1.7
LT	775+60	FE		1.0
LT	788+88	FE		0.8
RT	788+88	FE		0.8
LT	789+92	PE		1.9
LT	804+12	FE		0.6
LT	807+38	PE		0.9
RT	807+38	FE		0.9
LT	809+17	PRA	2.3	
RT	809+17	PRA	2.3	
LT	809+82	CE	1.4	
RT	809+82	CE	1.4	
LT	810+86	CE	1.9	

SIDE	STATION	TYPE	INCIDENTAL HOT-MIX ASPHALT SURFACING	
			TON	TON
RT	811+16	CE	1.4	
RT	814+07	PE		1.9
RT	816+04	PE		0.9
RT	820+05	PE		1.1
RT	821+73	PE		1.4
LT	822+33	FE		0.8
RT	831+37	FE		1.0
LT	834+52	FE		0.7
LT	835+72	PRA	2.4	
RT	835+72	PRA		1.7
RT	837+44	FE		1.2
LT	842+10	FE		0.7
RT	848+25	FE		1.2
RT	849+47	FE		1.1
LT	860+20	PE		2.2
RT	860+45	PE		1.7
LT	861+10	PE		1.7
LT	862+28	PRA	1.8	
RT	862+28	PRA	1.8	
LT	863+37	PE		1.1
RT	863+57	FE		1.5

FE=FIELD ENTRANCE PRA - PUBLIC ROAD APPROACH
PE=PRIVATE ENTRANCE MBT - MAILBOX TURNOUT
CE=COMMERCIAL ENTRANCE

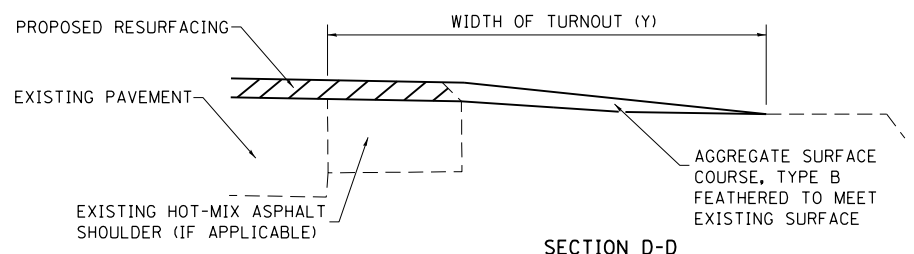
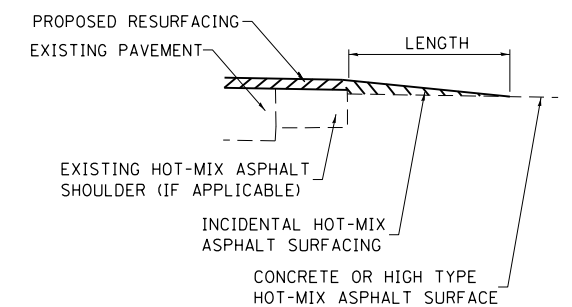
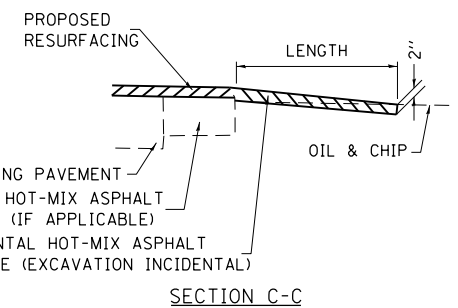
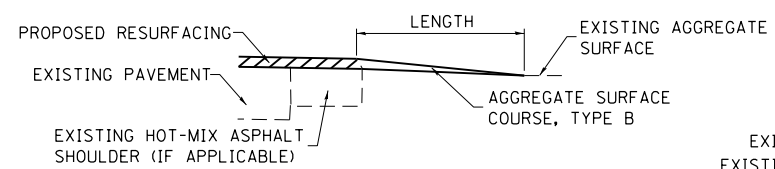
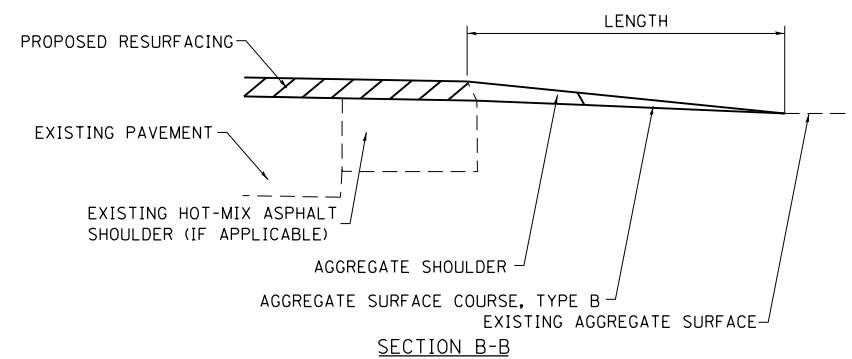
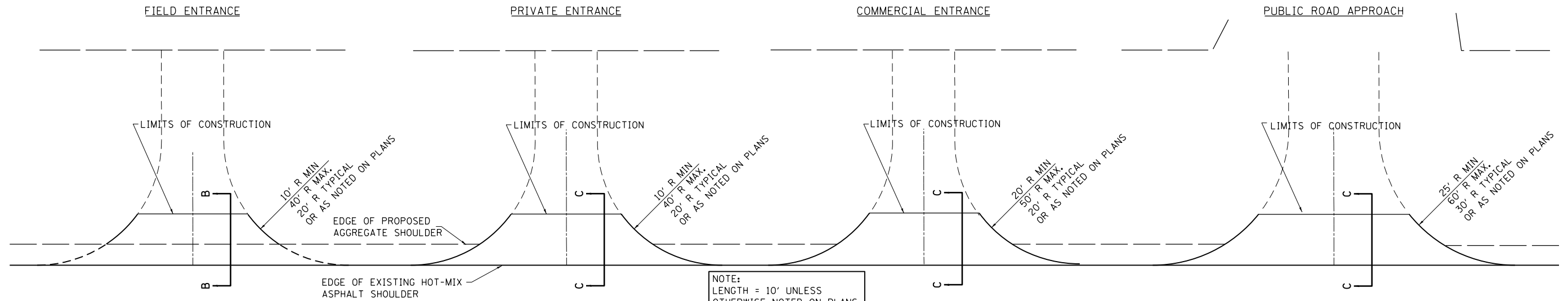
FILE NAME =	USER NAME = steffenmk	DESIGNED -	REVISED -
et:\pw\work\p\dot\steffenmk\d0249366\074512-sh1-details.dgn		DRAWN -	REVISED -
PLOT SCALE = 100.0000' / 1"		CHECKED -	REVISED -
PLOT DATE = 12/5/2013		DATE -	REVISED -

**STATE OF ILLINOIS
DEPARTMENT OF TRANSPORTATION**

**RURAL ENTRANCE SCHEDULE AND MAILBOX TURNOUT DETAILS
WITH SHOULDERS**

SCALE: NA SHEET NO. 2 OF 3 SHEETS STA. TO STA.

F.A.P. RTE.	SECTION	COUNTY	TOTAL SHEETS	SHEET NO.
328	(8,9,10)RS-2	Wayne	23	10
CONTRACT NO.			74512	
ILLINOIS FED. AID PROJECT				



TYPICAL SECTION AT MAILBOX TURNOUT
NOTE: SEE STANDARD 406201 FOR MAILBOX TURNOUT DETAILS

NOTES

THE COST OF THE ASPHALT MATERIALS, AND AGGREGATE (PRIME COAT) FOR ENTRANCES AND PUBLIC ROADS AND APPROACHES SHALL BE INCLUDED IN THE PAY ITEM INCIDENTAL HOT-MIX ASPHALT SURFACING.

THE COST OF EXCAVATION IS INCLUDED IN THE PAY ITEM INCIDENTAL HOT-MIX ASPHALT SURFACING.

IF THERE IS NOT EXISTING HOT-MIX ASPHALT SHOULDER THEN THE ENTRANCE TAPER STARTS AT THE EDGE OF EXISTING PAVEMENT.

THE COST OF THE BITUMINOUS MATERIALS AND AGGREGATE (PRIME COAT) FOR ENTRANCES AND PUBLIC ROAD APPROACHES SHALL BE INCLUDED IN THE PAY ITEM INCIDENTAL HOT-MIX ASPHALT SURFACING.

SIDE	STATION	TYPE	INCIDENTAL HOT-MIX ASPHALT SURFACING	
			TON	TON
LT	871+44	PE		1.0
LT	874+40	PE		0.9
RT	893+18	FE		2.5
LT	901+53	FE		1.5
RT	906+27	FE		1.0
LT	910+10	FE		1.0
LT	913+04	PE		0.9
LT	914+06	PE		0.9
TOTALS:			133	189

SIDE	STATION	TYPE	INCIDENTAL HOT-MIX ASPHALT SURFACING	
			TON	TON

SIDE	STATION	TYPE	INCIDENTAL HOT-MIX ASPHALT SURFACING	
			TON	TON

SIDE	STATION	TYPE	INCIDENTAL HOT-MIX ASPHALT SURFACING	
			TON	TON

SIDE	STATION	TYPE	INCIDENTAL HOT-MIX ASPHALT SURFACING	
			TON	TON

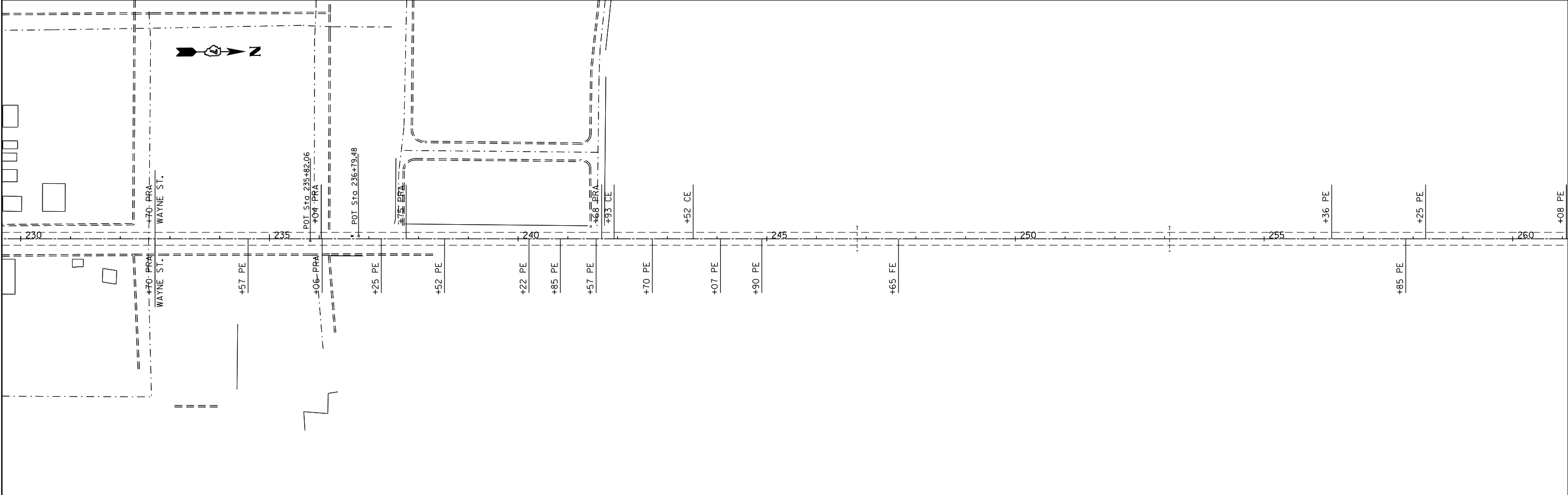
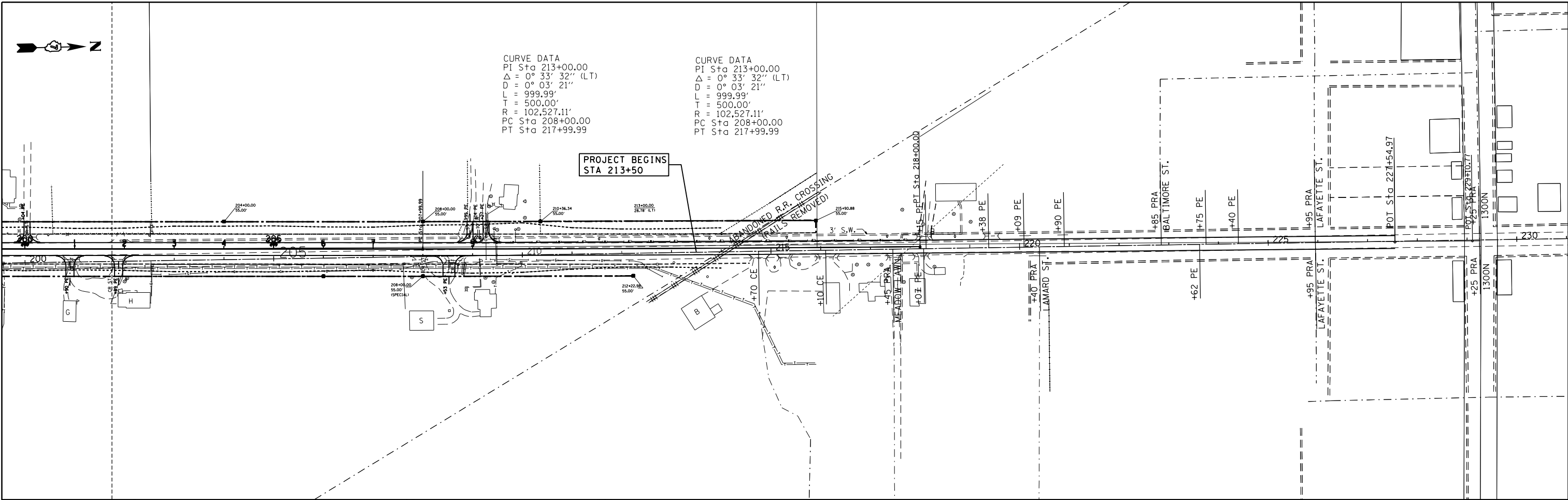
FE=FIELD ENTRANCE PRA - PUBLIC ROAD APPROACH
PE=PRIVATE ENTRANCE MBT - MAILBOX TURNOUT
CE=COMMERCIAL ENTRANCE

FILE NAME =	USER NAME = steffenmk	DESIGNED -	REVISED -
et:\pw\work\p\dot\steffenmk\d0249366\0774512-sh1-details.dgn		DRAWN -	REVISED -
		CHECKED -	REVISED -
		DATE -	REVISED -

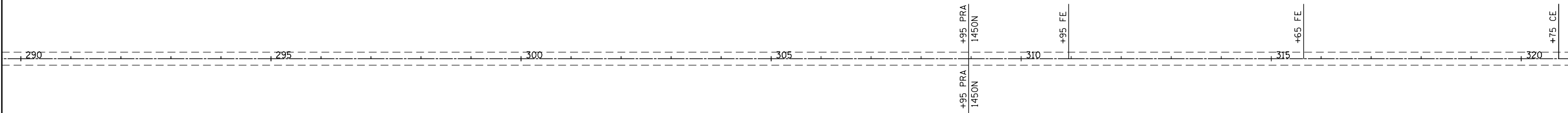
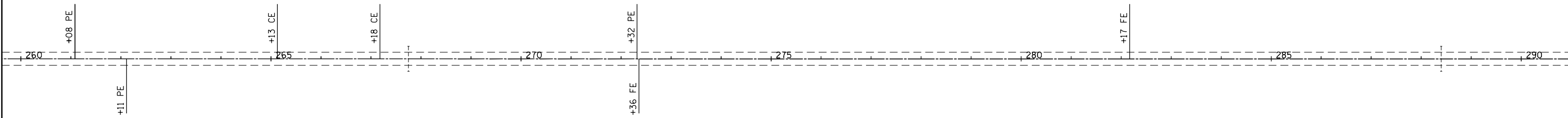
**STATE OF ILLINOIS
DEPARTMENT OF TRANSPORTATION**

**RURAL ENTRANCE SCHEDULE AND MAILBOX TURNOUT DETAILS
WITH SHOULDERS**

F.A.P. RTE.	SECTION	COUNTY	TOTAL SHEETS	SHEET NO.
328	(8,9,10)RS-2	Wayne	23	11
SCALE: NA			CONTRACT NO. 74512	
SHEET NO. 3 OF 3 SHEETS		ILLINOIS FED. AID PROJECT		



FILE NAME =	USER NAME = steffenmk	DESIGNED -	REVISED -	STATE OF ILLINOIS DEPARTMENT OF TRANSPORTATION	PLAN SHEET STA 200+00 TO STA 260+00			F.A.P. RTE.	SECTION	COUNTY	TOTAL SHEETS	SHEET NO.
ci:\pw\work\p\id\dot\stevfemk\d0249366\074512-sh-t-plan.dgn		DRAWN -	REVISED -		328	(8,910)RS-2	Wayne	23	12			
PLOT SCALE = 200.0000' / in.		CHECKED -	REVISED -		CONTRACT NO. 74512							
PLOT DATE = 12/5/2013		DATE -	REVISED -		SCALE: 100	SHEET NO. 1 OF 12 SHEETS	STA.	TO STA.	ILLINOIS FED. AID PROJECT			



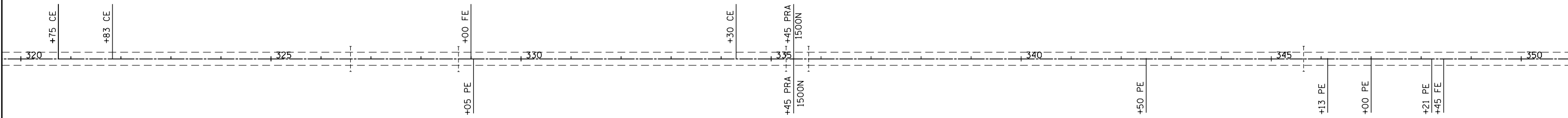
FILE NAME =	USER NAME = steffenmk	DESIGNED -	REVISED -
ci:\pw\work\p\dot\steffenmk\d0249366\0774512-sh-t-plan.dgn		DRAWN -	REVISED -
	PLOT SCALE = 200.0000' / in.	CHECKED -	REVISED -
	PLOT DATE = 12/5/2013	DATE -	REVISED -

**STATE OF ILLINOIS
DEPARTMENT OF TRANSPORTATION**

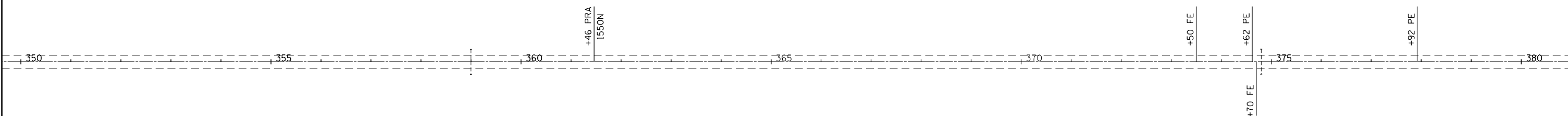
**PLAN SHEET
STA 260+00 TO STA 320+00**

SCALE: 100 SHEET NO. 2 OF 12 SHEETS STA. TO STA.

F.A.P. RTE.	SECTION	COUNTY	TOTAL SHEETS	SHEET NO.
328	18,910RS-2	Wayne	23	13
CONTRACT NO.			74512	
ILLINOIS FED. AID PROJECT				



CURVE DATA
 P.I. STA= 351+00
 Δ = 0°-05'-54"
 D= 0°-06'-00"
 R= 57296'
 T= 450.0'
 L= 900.00'
 E= 1.9'
 S.E. = 0 (MATCH EXISTING)
 P.C. STA= 346+50
 P.T. STA= 355+50



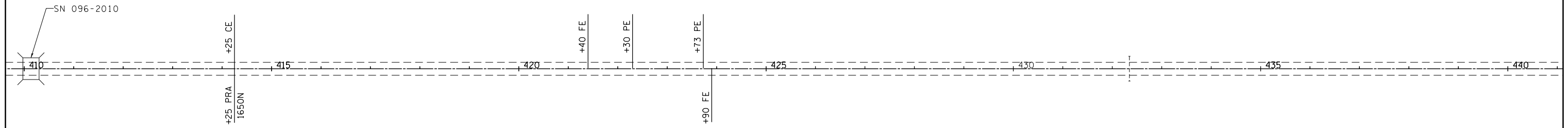
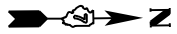
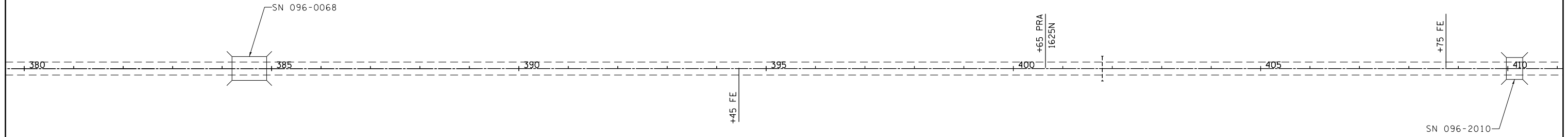
FILE NAME =	USER NAME = steffenmk	DESIGNED -	REVISED -
ci:\pw\work\p\dot\steffenmk\d0249366\0774512-sh-t-plan.dgn		DRAWN -	REVISED -
	PLOT SCALE = 200.0000' / in.	CHECKED -	REVISED -
	PLOT DATE = 12/5/2013	DATE -	REVISED -

**STATE OF ILLINOIS
 DEPARTMENT OF TRANSPORTATION**

**PLAN SHEET
 STA 320+00 TO STA 380+00**

SCALE: 100 SHEET NO. 3 OF 12 SHEETS STA. TO STA.

F.A.P. RTE.	SECTION	COUNTY	TOTAL SHEETS	SHEET NO.
328	(8,9,10)RS-2	Wayne	23	14
ILLINOIS FED. AID PROJECT			CONTRACT NO. 74512	



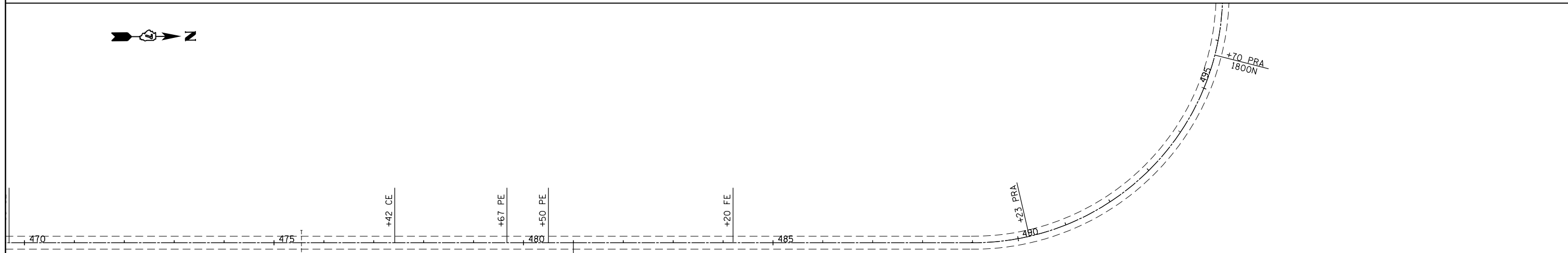
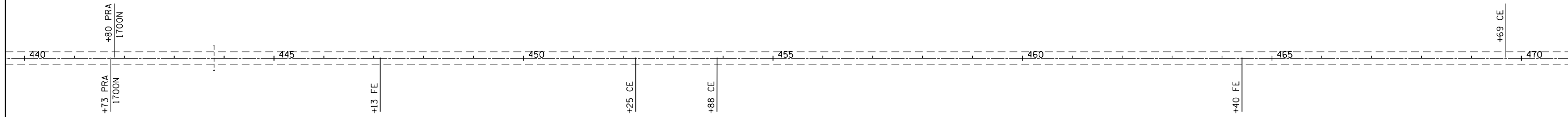
FILE NAME =	USER NAME = steffenmk	DESIGNED -	REVISED -
ci:\pw\work\p\dot\stef\enmk\d0249366\0774512-sh-t-plan.dgn		DRAWN -	REVISED -
	PLOT SCALE = 200.0000' / in.	CHECKED -	REVISED -
	PLOT DATE = 12/5/2013	DATE -	REVISED -

**STATE OF ILLINOIS
DEPARTMENT OF TRANSPORTATION**

**PLAN SHEET
STA 380+00 TO STA 440+00**

SCALE: 100 SHEET NO. 4 OF 12 SHEETS STA. TO STA.

F.A.P. RTE.	SECTION	COUNTY	TOTAL SHEETS	SHEET NO.
328	18,910RS-2	Wayne	23	15
CONTRACT NO. 74512			ILLINOIS FED. AID PROJECT	



CURVE DATA
 P.I. STA: 494+06
 Δ : 90°32'00"
 D: 11°28'00"
 R: 500'
 T: 504.7'
 L: 789.5'
 E: 210.4'
 S.E.A: 0.055% (MATCH EXISTING)
 P.C. STA: 489+01.3
 P.T. STA: 496+90.8
 SE TRANSITION 125'
 STA. 488+18 TO STA. 489+43
 STA. 498+69 TO STA. 499+94

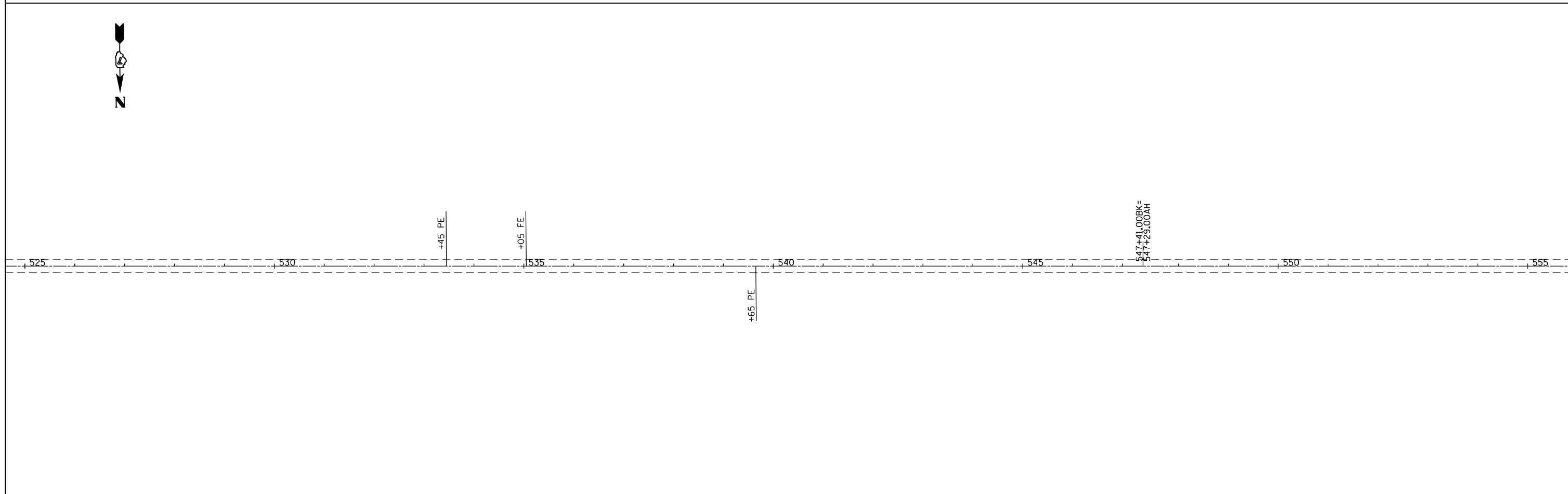
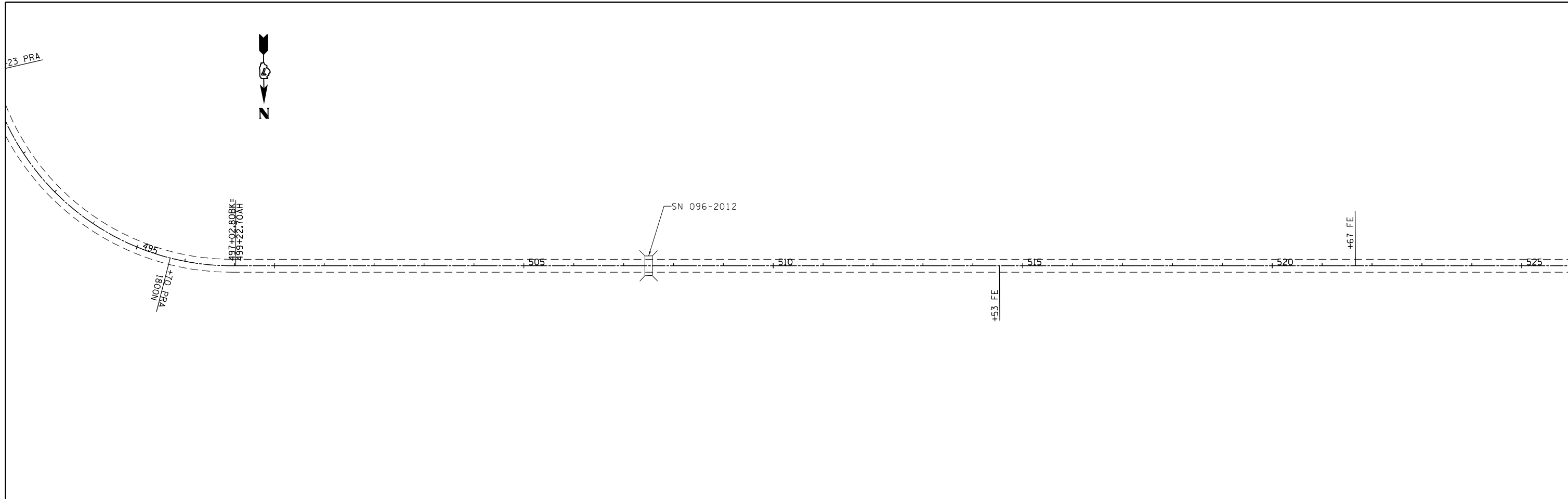
FILE NAME =	USER NAME = steffenmk	DESIGNED -	REVISED -
ci:\pw\work\p\dot\stef\mk\d0249366\074512-sh-t-plan.dgn		DRAWN -	REVISED -
	PLOT SCALE = 200.0000' / in.	CHECKED -	REVISED -
	PLOT DATE = 12/5/2013	DATE -	REVISED -

**STATE OF ILLINOIS
 DEPARTMENT OF TRANSPORTATION**

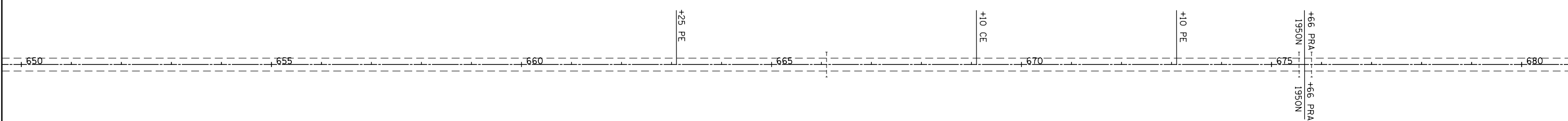
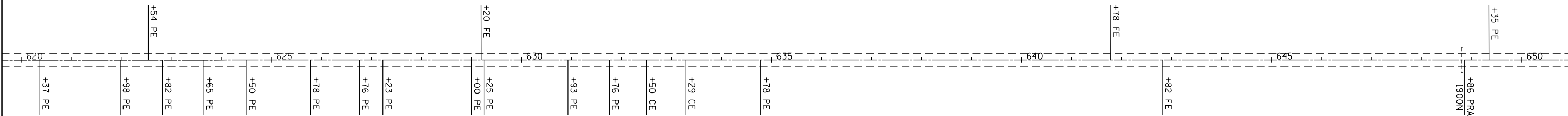
PLAN SHEET
STA 440+00 TO STA 495+00

SCALE: 100 SHEET NO. 5 OF 12 SHEETS STA. TO STA.

F.A.P. RTE.	SECTION	COUNTY	TOTAL SHEETS	SHEET NO.
328	18,910RS-2	Wayne	23	16
CONTRACT NO. 74512			ILLINOIS FED. AID PROJECT	



FILE NAME =	USER NAME = steffenmk	DESIGNED -	REVISED -	STATE OF ILLINOIS DEPARTMENT OF TRANSPORTATION	PLAN SHEET STA 495+00 TO STA 555+00			F.A.P. RTE.	SECTION	COUNTY	TOTAL SHEETS	SHEET NO.
c:\pwork\pwork\stefhenk\d0249366\0774512-sh-t-plan.dgn		DRAWN -	REVISED -		328	18,910RS-2	Wayne	23	17			
	PLOT SCALE = 200.0000' / in.	CHECKED -	REVISED -		CONTRACT NO. 74512			ILLINOIS FED. AID PROJECT				
	PLOT DATE = 12/5/2013	DATE -	REVISED -		SCALE: 100	SHEET NO. 6 OF 12 SHEETS	STA. TO STA.					



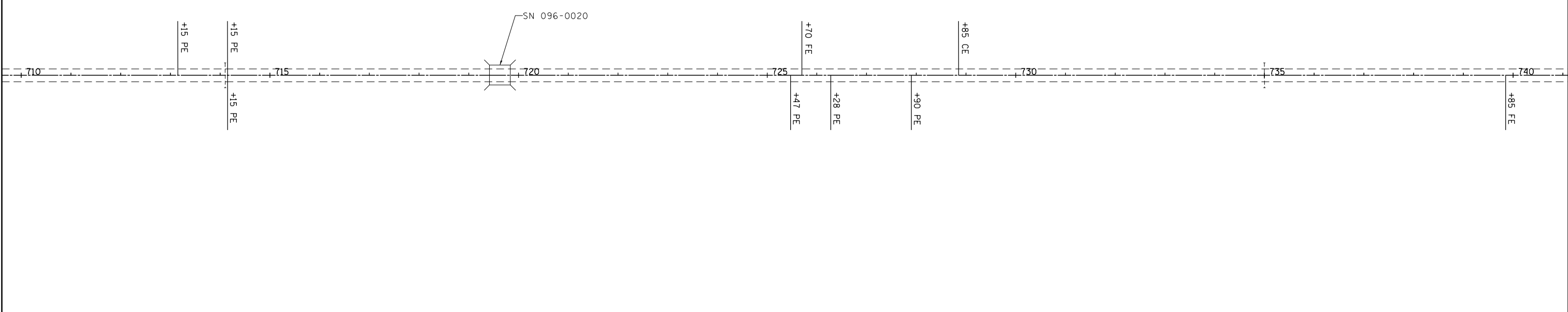
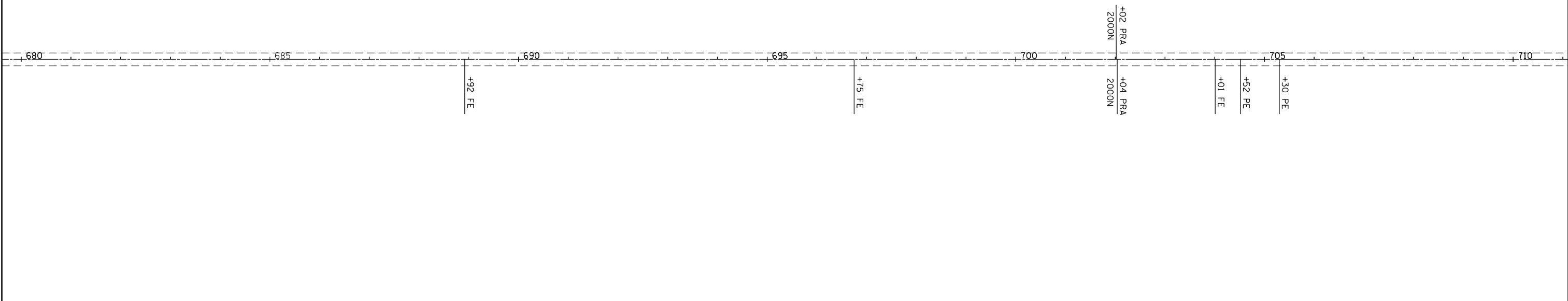
FILE NAME =	USER NAME = steffenmk	DESIGNED -	REVISED -
ci:\pw\work\p\idot\stefjenmk\d0249366\0774512-sh-t-plan.dgn		DRAWN -	REVISED -
	PLOT SCALE = 200.0000' / in.	CHECKED -	REVISED -
	PLOT DATE = 12/5/2013	DATE -	REVISED -

**STATE OF ILLINOIS
DEPARTMENT OF TRANSPORTATION**

**PLAN SHEET
STA 620+00 TO STA 680+00**

SCALE: 100 SHEET NO. 8 OF 12 SHEETS STA. TO STA.

F.A.P. RTE.	SECTION	COUNTY	TOTAL SHEETS	SHEET NO.
328	(8,9,10)RS-2	Wayne	23	19
CONTRACT NO. 74512			ILLINOIS FED. AID PROJECT	



FILE NAME =	USER NAME = steffenmk	DESIGNED -	REVISED -
ci:\pw\work\p\idot\steffenmk\d0249366\0774512-sh-t-plan.dgn		DRAWN -	REVISED -
	PLOT SCALE = 200.0000' / in.	CHECKED -	REVISED -
	PLOT DATE = 12/5/2013	DATE -	REVISED -

**STATE OF ILLINOIS
DEPARTMENT OF TRANSPORTATION**

**PLAN SHEET
STA 680+00 TO STA 740+00**

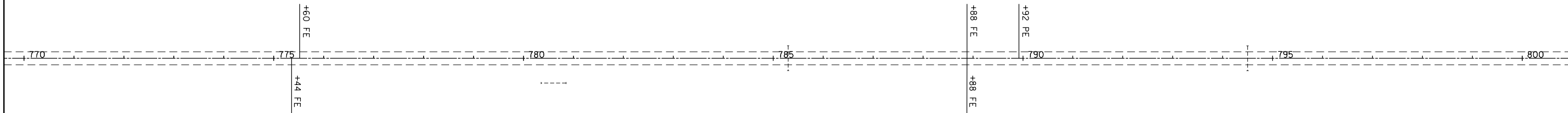
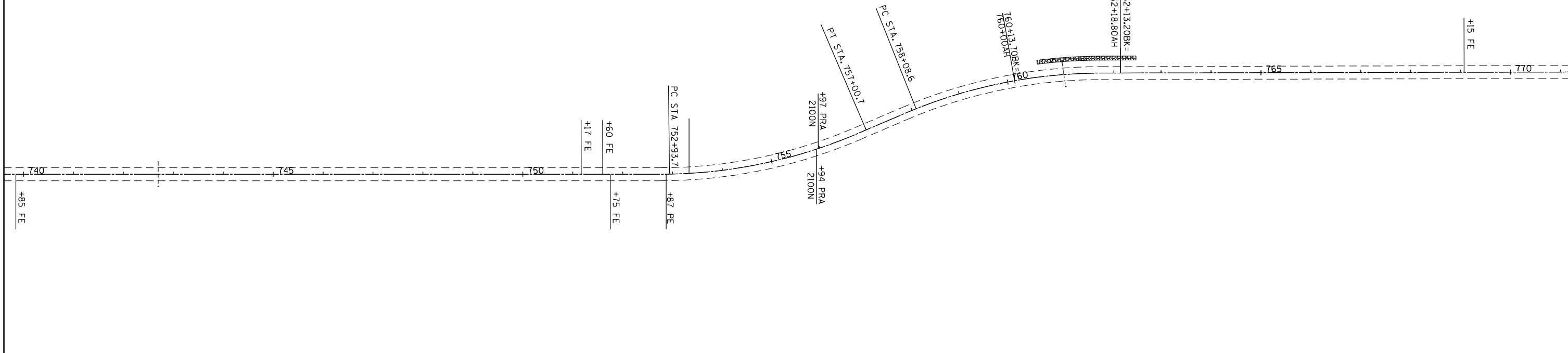
SCALE: 100 SHEET NO. 9 OF 12 SHEETS STA. TO STA.

F.A.P. RTE.	SECTION	COUNTY	TOTAL SHEETS	SHEET NO.
328	18,910RS-2	Wayne	23	20
ILLINOIS FED. AID PROJECT			CONTRACT NO. 74512	



CURVE DATA
 D= 5°-42'-00"
 R= 1005.6'
 T= 206.3'
 L= 407.0'
 E= 21.0'
 S.E. = 0.072% (MATCH EXISTING)
 P.C. STA= 752+93.7
 P.T. STA= 757+00.7
 STA. 751+78.4 TO STA. 753+51.4
 STA. 755+80.3 TO STA. 757+53.3

CURVE DATA
 P.I. STA= 760+13.7
 Δ= 23°-04'-00"
 D= 5°-42'-00"
 R= 1005.6'
 T= 205.1'
 L= 404.7'
 E= 20.7'
 S.E. = 0.072% (MATCH EXISTING)
 P.C. STA= 758+08.6
 P.T. STA= 762+13.3
 STA. 757+53.3 TO STA. 759+03.3
 STA. 761+55.1 TO STA. 763+05.1



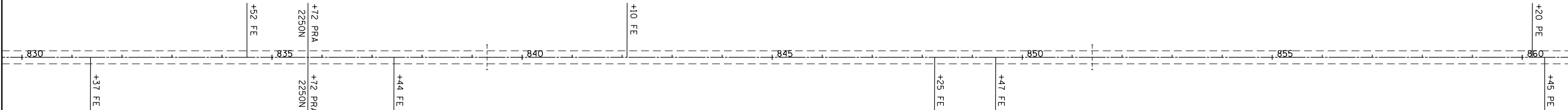
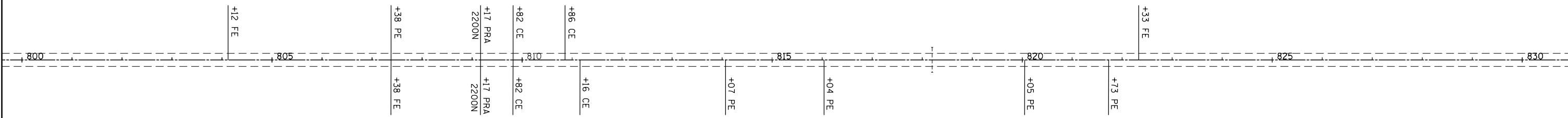
FILE NAME =	USER NAME = steffenmk	DESIGNED -	REVISED -
ci:\pw\work\p\dot\stef\enmk\d0249366\0774512-sh-t-plan.dgn		DRAWN -	REVISED -
	PLOT SCALE = 200.0000' / in.	CHECKED -	REVISED -
	PLOT DATE = 12/5/2013	DATE -	REVISED -

**STATE OF ILLINOIS
 DEPARTMENT OF TRANSPORTATION**

**PLAN SHEET
 STA 740+00 TO STA 800+00**

SCALE: 100 SHEET NO. 10 OF 12 SHEETS STA. TO STA.

F.A.P. RTE.	SECTION	COUNTY	TOTAL SHEETS	SHEET NO.
328	(8,9,10)RS-2	Wayne	23	21
CONTRACT NO. 74512			ILLINOIS FED. AID PROJECT	



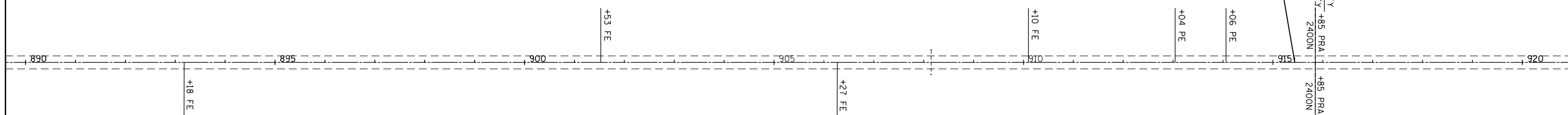
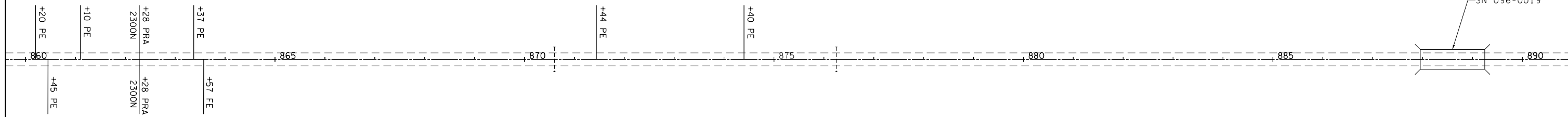
CURVE DATA
 P.I. STA= 829+89.8
 Δ= 0°-51'-00"
 D= 0°-05'-00"
 R= 68755'
 T= 510.2'
 L= 1020.4'
 E= 1.9'
 S.E.= 0 (MATCH EXISTING)
 P.C. STA= 829+89.8
 P.T. STA= 840+10.2

FILE NAME =	USER NAME = steffenmk	DESIGNED -	REVISED -
ci:\pw\work\p\dot\steffenmk\d0249366\074512-sh-t-plan.dgn		DRAWN -	REVISED -
	PLOT SCALE = 200.0000' / in.	CHECKED -	REVISED -
	PLOT DATE = 12/5/2013	DATE -	REVISED -

STATE OF ILLINOIS
DEPARTMENT OF TRANSPORTATION

PLAN SHEET STA 800+00 TO STA 860+00			
SCALE: 100	SHEET NO. 11 OF 12 SHEETS	STA.	TO STA.

F.A.P. RTE.	SECTION	COUNTY	TOTAL SHEETS	SHEET NO.
328	(8,910)RS-2	Wayne	23	22
ILLINOIS FED. AID PROJECT			CONTRACT NO. 74512	



FILE NAME =	USER NAME = steffenmk	DESIGNED -	REVISED -
ci:\pw\work\p\idot\steffenmk\d0249366\0774512-sh1-plan.dgn		DRAWN -	REVISED -
	PLOT SCALE = 200.0000' / in.	CHECKED -	REVISED -
	PLOT DATE = 12/5/2013	DATE -	REVISED -

**STATE OF ILLINOIS
DEPARTMENT OF TRANSPORTATION**

**PLAN SHEET
STA 860+00 TO STA 920+00**

SCALE: 100 SHEET NO. 12 OF 12 SHEETS STA. TO STA.

F.A.P. RTE.	SECTION	COUNTY	TOTAL SHEETS	SHEET NO.
328	(8,910)RS-2	Wayne	23	23
CONTRACT NO. 74512			ILLINOIS FED. AID PROJECT	