

STATE OF ILLINOIS
 DEPARTMENT OF TRANSPORTATION
 DIVISION OF HIGHWAYS

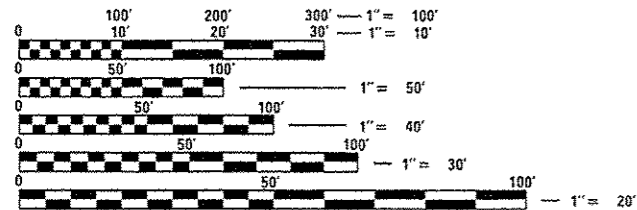
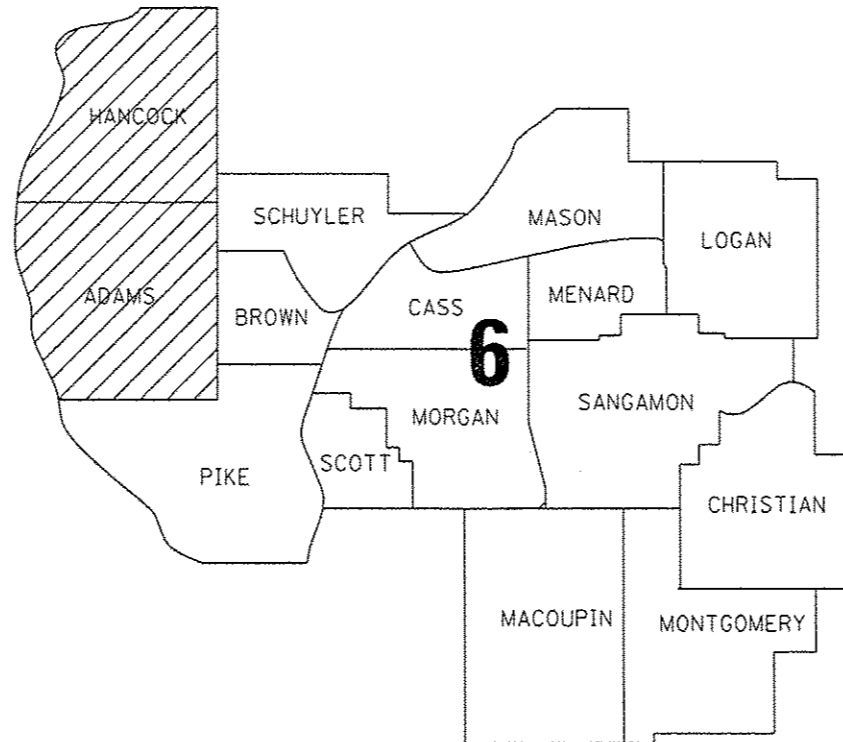
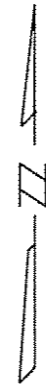
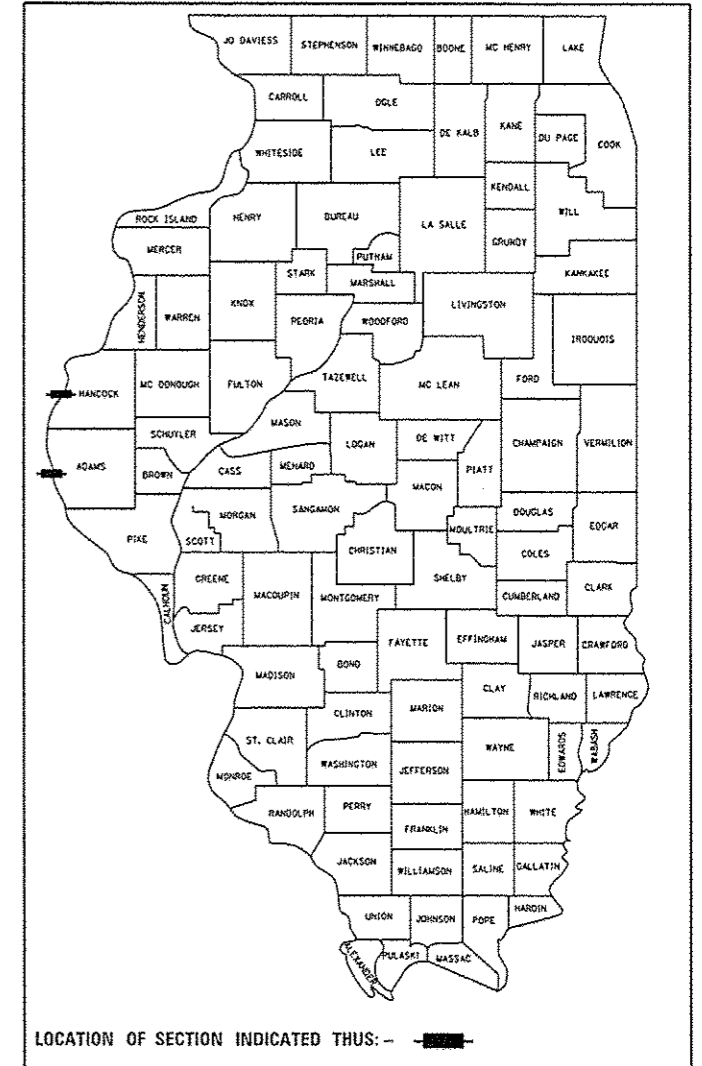
**PROPOSED
 HIGHWAY PLANS**

VARIOUS ROUTES
 SECTION D6 BRIDGE CLEANING 2014

BRIDGE WASHING
 ADAMS AND HANCOCK
 C-96-042-14

F.A.P. RTE.	SECTION	COUNTY	TOTAL SHEETS	SHEET NO.
VAR. D6 BRIDGE CLEANING 2014	ADAMS, HANCOCK	ILLINOIS	4	1
FED. ROAD DIST. NO. 6				

FOR INDEX OF SHEETS, SEE SHEET NO. 2



FULL SIZE PLANS HAVE BEEN PREPARED USING STANDARD ENGINEERING SCALES. REDUCED SIZED PLANS WILL NOT CONFORM TO STANDARD SCALES. IN MAKING MEASUREMENTS ON REDUCED PLANS, THE ABOVE SCALES MAY BE USED.

J.U.L.I.E.
 JOINT UTILITY LOCATION INFORMATION FOR EXCAVATION
 1-800-892-0123
 OR 811

BRIDGE MAINTENANCE ENGINEER: BRANDON DUDLEY
 BRIDGE INSPECTION ENGINEER: DAVE COPENBARGER

CONTRACT NO. 72G71

GROSS LENGTH = NA
 NET LENGTH = NA

STATE OF ILLINOIS
 DEPARTMENT OF TRANSPORTATION
 DIVISION OF HIGHWAYS

SUBMITTED December 9, 2013
Regis Z. Drexler
 DEPUTY DIRECTOR OF HIGHWAYS, REGION ENGINEER

Jan 24, 2014
John D. Baranzelli, P.E.
 ENGINEER OF DESIGN AND ENVIRONMENT

Jan 24, 2014
Cher Osman, P.E.
 DIRECTOR OF HIGHWAYS, CHIEF ENGINEER

**PRINTED BY THE AUTHORITY
 OF THE STATE OF ILLINOIS**

INDEX OF SHEETS

- 1 COVER SHEET
- 2 INDEX, STANDARDS, GENERAL NOTES, & SIGNATURES
- 3 SUMMARY OF QUANTITIES
- 4 LOCATION MAP

STANDARDS

- 701101-04
- 701106-02
- 701601-09
- 701901-03

CONTRACT: 72G71
SHEET 2 OF 4

GENERAL NOTES:

BRIDGE #1 - SN 001-0019: US 24 (EB) AND MAINE STREET OVER THE MISSISSIPPI RIVER AT THE WEST EDGE OF QUINCY IN ADAMS COUNTY. SEE TRUSS AND MULTI BEAM OR APPROACH SPAN NOTES BELOW.

BRIDGE #2 - SN 001-0068: US 24 (WB) AND MAINE STREET OVER THE MISSISSIPPI RIVER AT THE WEST EDGE OF QUINCY IN ADAMS COUNTY. SEE MULTI BEAM OR APPROACH SPAN NOTES BELOW.

BRIDGE #3 - SN 034-0062: US 136 OVER THE MISSISSIPPI RIVER AT THE EAST EDGE OF KEOKUK, IA ADAMS COUNTY. SEE MULTI BEAM OR APPROACH SPAN NOTES BELOW.

ALL BRIDGE WASHING SHALL BE PERFORMED IN ACCORDANCE WITH ARTICLE 592 OF THE STANDARD SPECS AND AS OUTLINED BELOW:

TRUSS SPANS - THE AREAS OF TRUSS SPANS TO BE WASHED SHALL INCLUDE THE FOLLOWING:

- ALL STRUCTURAL STEEL INCLUDING LOWER CHORD TO A POINT OF 10' ABOVE THE BRIDGE DECK
- THE ENTIRE DECK SURFACE, CURB, JOINTS, DRAINS, AND RAILINGS
- ALL FLOOR BEAMS, DIAGONAL BRACING, STRINGERS, AND OTHER STRUCTURAL STEEL FROM THE LOWER CHORD INWARD TO AND INCLUDING THE OUTSIDE AND BOTTOM OF EXTERIOR STRINGERS
- ALL ABUTMENT AND PIER CAPS
- ALL STRUCTURAL STEEL LOCATED BELOW THE DECK WITHIN 10' LONGITUDINALLY ON EITHER SIDE OF ALL EXPANSION JOINTS OR DEFLECTION JOINTS

MULTI BEAM OR APPROACH SPANS - THE AREAS TO BE WASHED ON MULTI BEAM SPANS OR APPROACH SPANS SHALL INCLUDE THE FOLLOWING:

- ALL DECK JOINTS AND DECK DRAINS
- THE ENTIRE DECK SURFACE, CURB, AND RAILINGS
- THE OUTSIDE AND BOTTOMS OF FASCIA BEAMS
- ALL ABUTMENT AND PIER CAPS
- ALL STRUCTURAL STEEL LOCATED BELOW THE DECK WITHIN 10' LONGITUDINALLY ON EITHER SIDE OF ALL EXPANSION JOINTS OR DEFLECTION JOINTS

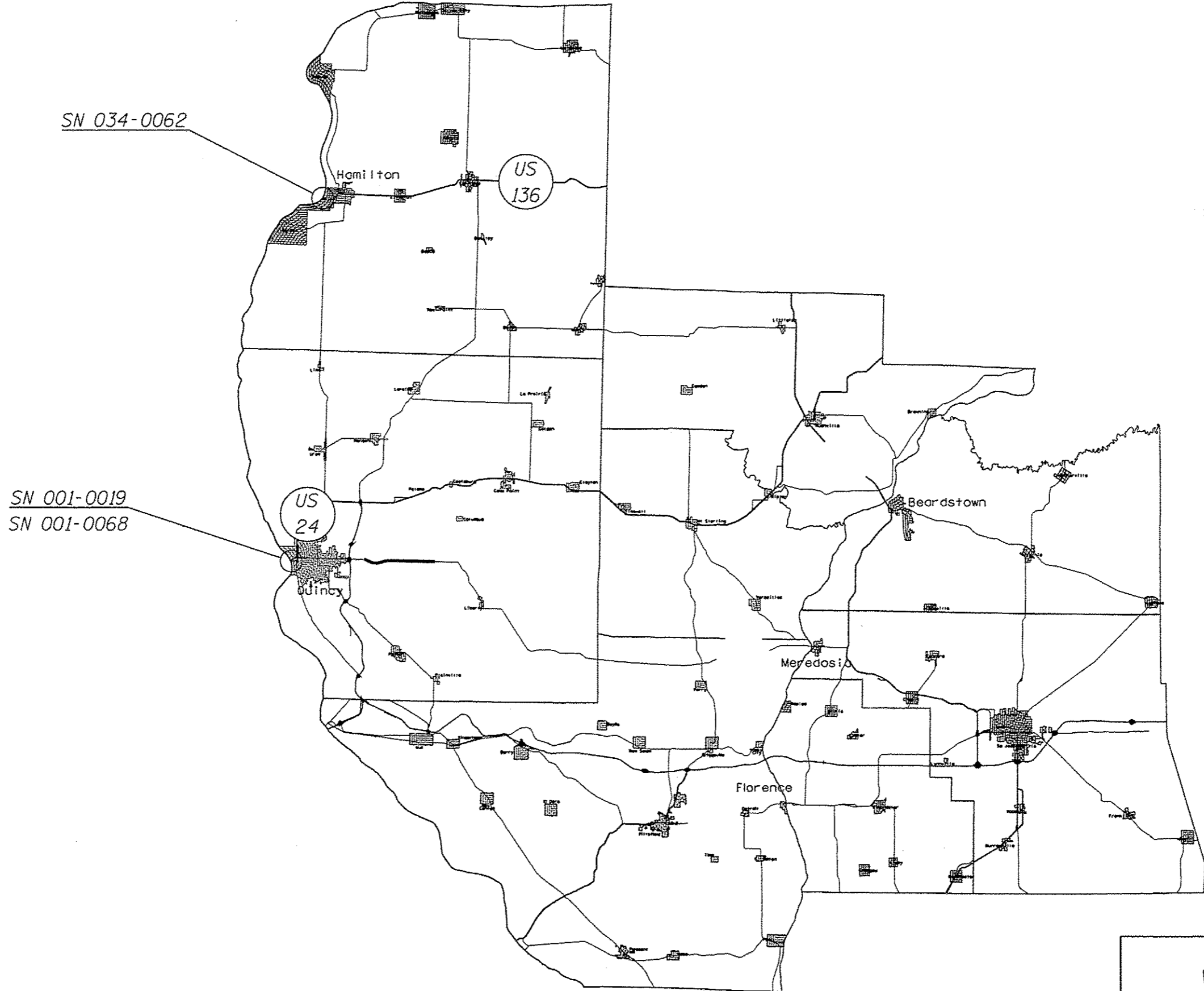
STATE OF ILLINOIS DEPARTMENT OF TRANSPORTATION DIVISION OF HIGHWAYS DISTRICT 6	
EXAMINED <u>12/4</u>	20 <u>13</u>
<u>Bill m Ryan</u> ENGINEER OF OPERATIONS	
EXAMINED <u>DEC 9</u>	20 <u>13</u>
<u>Jerry L. L.</u> ENGINEER OF PROJECT IMPLEMENTATION	
EXAMINED <u>Dec 5</u>	20 <u>13</u>
<u>DRMLI</u> ENGINEER OF PROGRAM DEVELOPMENT	

INDEX, STDS, & GENERAL NOTES
VARIOUS ROUTES
D6 BRIDGE CLEANING 2014
ADAMS AND HANCOCK COUNTIES

SUMMARY OF QUANTITIES

ITEM NO.	DESCRIPTION	UNIT	TOTAL QTY	100% STATE	100% STATE
				ADAMS COUNTY	HANCOCK COUNTY
59200101	BRIDGE WASHING NO. 1	EACH	1	1	
59200102	BRIDGE WASHING NO. 2	EACH	1	1	
59200103	BRIDGE WASHING NO. 3	EACH	1		1
67100100	MOBILIZATION	L SUM	1	0.67	0.33
70102630	TRAFFIC CONTROL AND PROTECTION STANDARD 701601	L SUM	1	0.67	0.33

QUANTITIES
VARIOUS ROUTES
D6 BRIDGE CLEANING 2014
ADAMS AND HANCOCK COUNTIES



LOCATION MAP
VARIOUS ROUTES
D6 BRIDGE CLEANING 2014
ADAMS AND HANCOCK COUNTIES