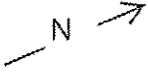
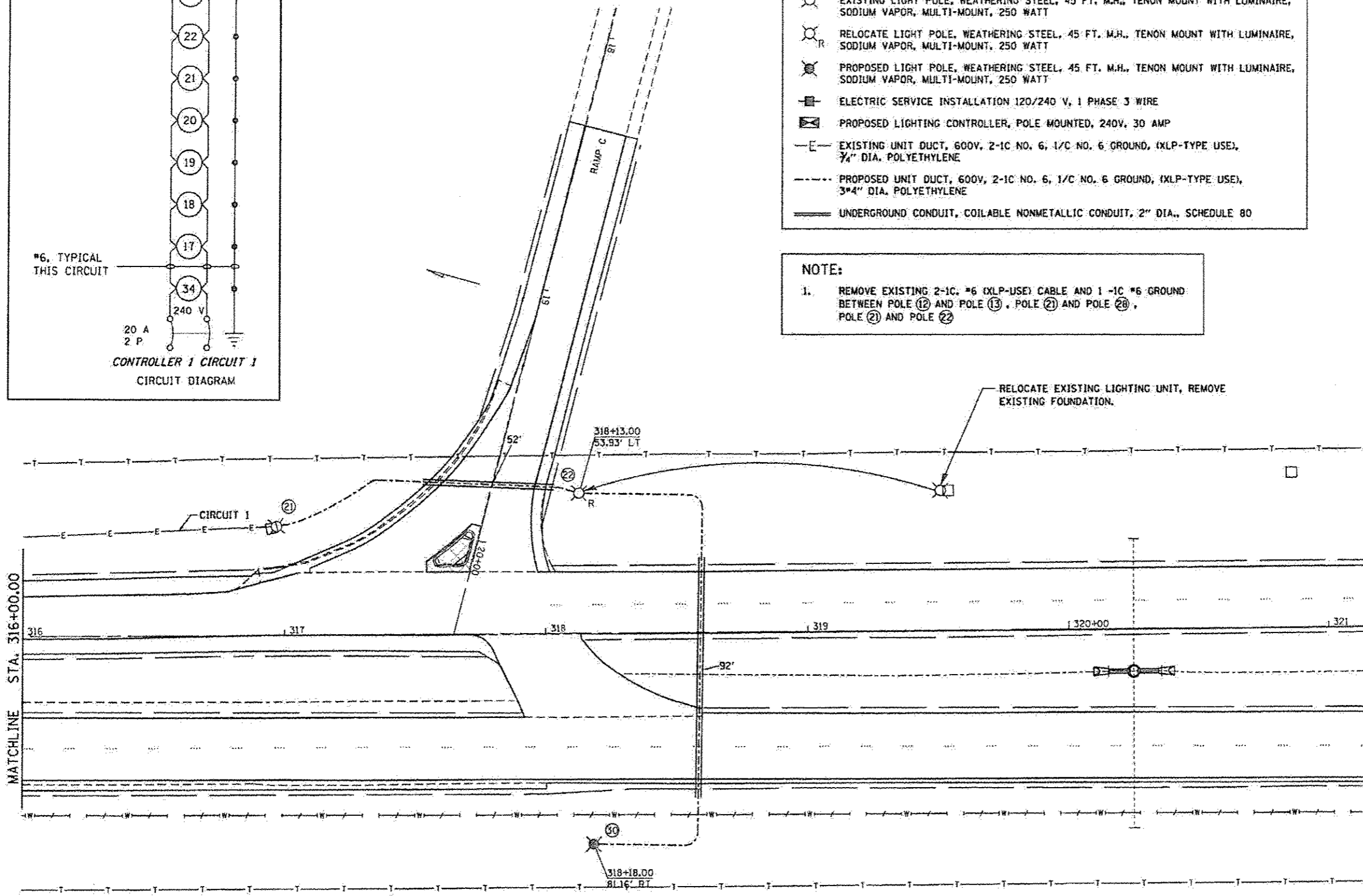


**LEGEND**

	EXISTING LIGHT POLE, WEATHERING STEEL, 45 FT. M.H., TENON MOUNT WITH LUMINAIRE, SODIUM VAPOR, MULTI-MOUNT, 250 WATT
	RELOCATE LIGHT POLE, WEATHERING STEEL, 45 FT. M.H., TENON MOUNT WITH LUMINAIRE, SODIUM VAPOR, MULTI-MOUNT, 250 WATT
	PROPOSED LIGHT POLE, WEATHERING STEEL, 45 FT. M.H., TENON MOUNT WITH LUMINAIRE, SODIUM VAPOR, MULTI-MOUNT, 250 WATT
	ELECTRIC SERVICE INSTALLATION 120/240 V, 1 PHASE 3 WIRE
	PROPOSED LIGHTING CONTROLLER, POLE MOUNTED, 240V, 30 AMP
	EXISTING UNIT DUCT, 600V, 2-1C NO. 6, 1/C NO. 6 GROUND, (XLP-TYPE USE), 3/4" DIA. POLYETHYLENE
	PROPOSED UNIT DUCT, 600V, 2-1C NO. 6, 1/C NO. 6 GROUND, (XLP-TYPE USE), 3/4" DIA. POLYETHYLENE
	UNDERGROUND CONDUIT, COILABLE NONMETALLIC CONDUIT, 2" DIA., SCHEDULE 80

**NOTE:**

1. REMOVE EXISTING 2-1C, #6 (XLP-USE) CABLE AND 1 -1C #6 GROUND BETWEEN POLE (12) AND POLE (13), POLE (21) AND POLE (20), POLE (21) AND POLE (22)



FILE NAME #	USER NAME #	DESIGNED -	REVISED -	<b>STATE OF ILLINOIS DEPARTMENT OF TRANSPORTATION</b>	<b>BUSINESS LOOP 55 PROPOSED LIGHTING PLAN</b>	F.A.P. R/F	SECTION	COUNTY	TOTAL SHEETS	SHEET NO.	
Default		DRAWN -	REVISED -			666	(26)RS.1	SANGAMON	116	53	
		CHECKED -	REVISED -			SCALE: SHEET OF SHEETS STA. TO STA.		CONTRACT NO. 72F50			
		DATE -	REVISED -			ILLINOIS FED. AID PROJECT					