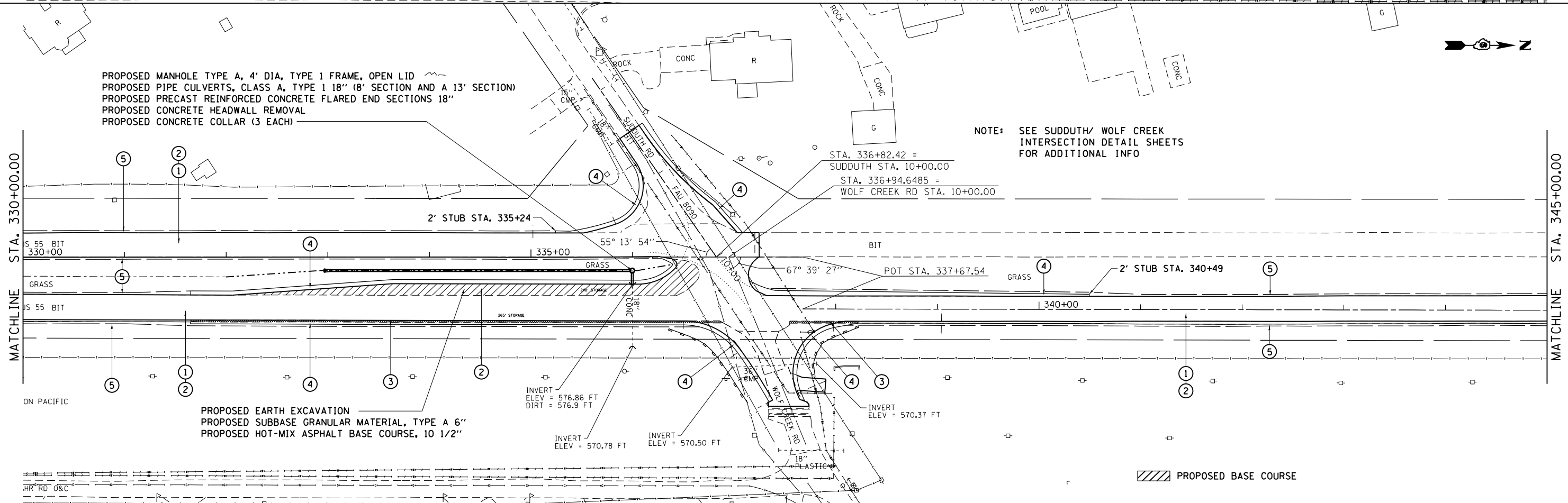
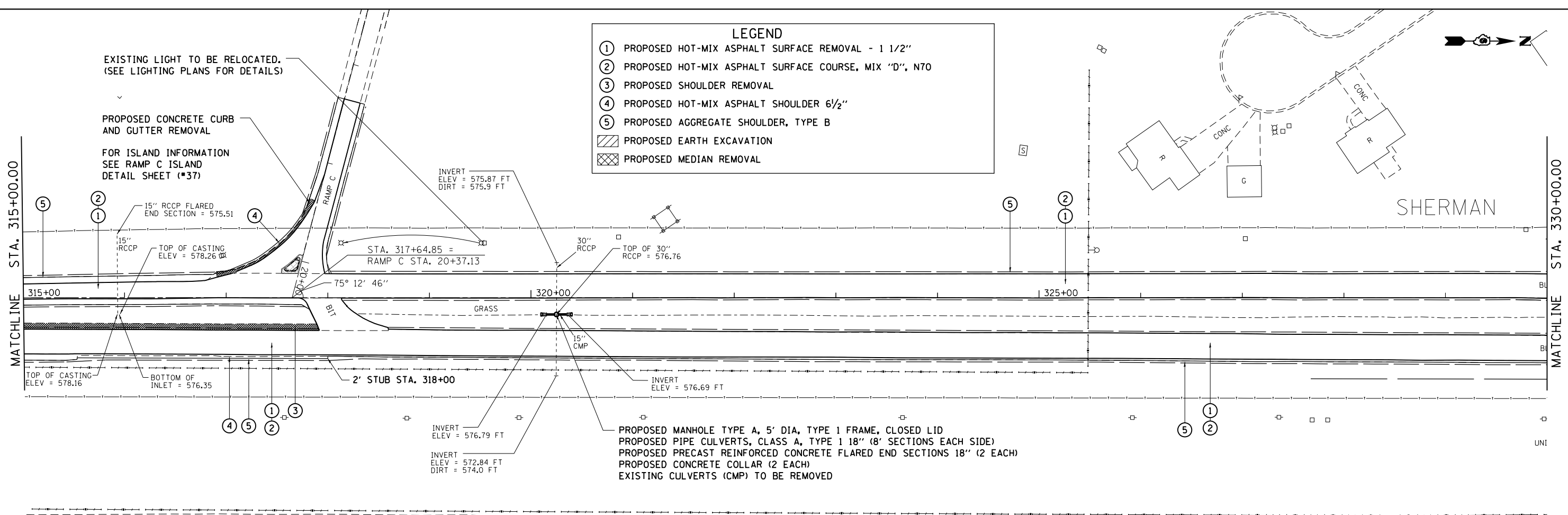


LEGEND

- ① PROPOSED HOT-MIX ASPHALT SURFACE REMOVAL - 1 1/2"
- ② PROPOSED HOT-MIX ASPHALT SURFACE COURSE, MIX "D", N70
- ③ PROPOSED SHOULDER REMOVAL
- ④ PROPOSED HOT-MIX ASPHALT SHOULDER 6 1/2"
- ⑤ PROPOSED AGGREGATE SHOULDER, TYPE B
- ▨ PROPOSED EARTH EXCAVATION
- ▩ PROPOSED MEDIAN REMOVAL



FILE NAME =	USER NAME = sparksgw	DESIGNED -	REVISED -	STATE OF ILLINOIS DEPARTMENT OF TRANSPORTATION	BUSINESS LOOP 55 PLAN SHEETS			F.A.P. RTE.	SECTION	COUNTY	TOTAL SHEETS	SHEET NO.
Default	ei:\pw_work\p\dot\sparksgw\10306018\067250-Sht-50-Pln.dgn	DRAWN -	REVISED -					666	(26)RS,I	SANGAMON	116	26
	PLOT SCALE = 100.0000' / 1in.	CHECKED -	REVISED -		CONTRACT NO. 72F50							
	PLOT DATE = Dec-06-2013 09:53:50AM	DATE -	REVISED -		ILLINOIS FED. AID PROJECT							