

STATE OF ILLINOIS
DEPARTMENT OF TRANSPORTATION
DIVISION OF HIGHWAYS

**PROPOSED
HIGHWAY PLANS**

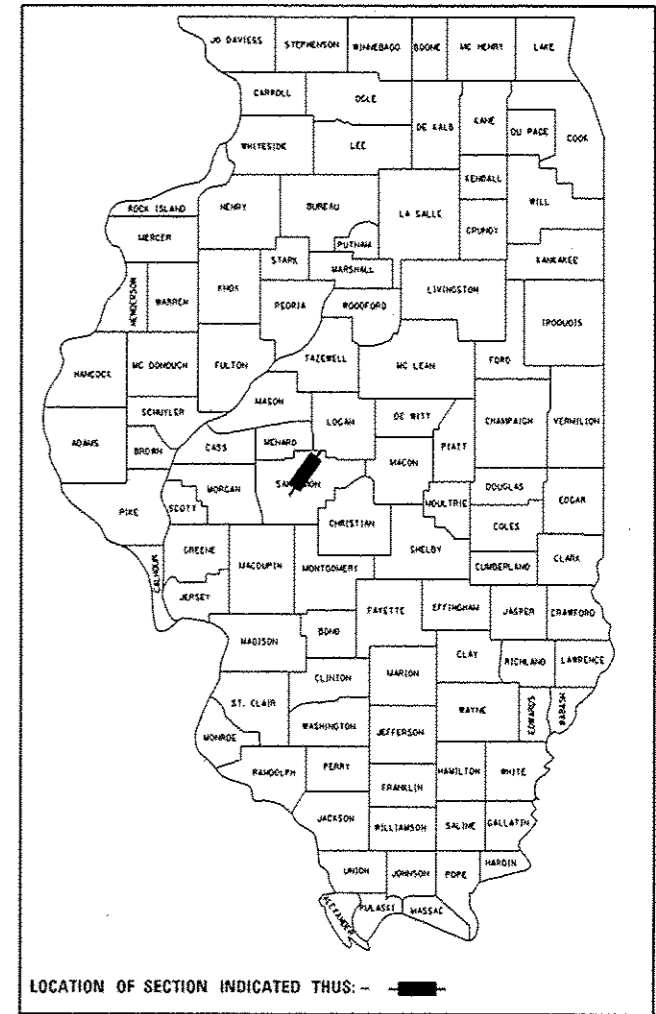
FAP ROUTE 666 (I-55 BUS /PEORIA RD)
SECTION (26)RS, I
PROJECT ACNHPP-ACHSIP-0666(023)
RESURFACING AND
INTERSECTION IMPROVEMENT
SANGAMON COUNTY

C-96-068-12

F.A.P. RTE. 666	SECTION (26)RS, I	COUNTY SANGAMON	TOTAL SHEETS 116	SHEET NO. 1
ILLINOIS CONTRACT NO. 72F50				

* 116-1 = 115 TOTAL SHEETS

D-96-068-12



ADT'S
BL-55: 8700 (2013)
SU% = 5.81%, 506
MU% = 3.16%, 275
PV = 7919 TF = 2.0

STATE OF ILLINOIS
DEPARTMENT OF TRANSPORTATION
DIVISION OF HIGHWAYS

SUBMITTED *December 5, 2013*
Raymond L. Aniskell
DEPUTY DIRECTOR OF HIGHWAYS, REGION ENGINEER

Jan 24, 2014
John D. Baranzello P.E.
ENGINEER OF DESIGN AND ENVIRONMENT

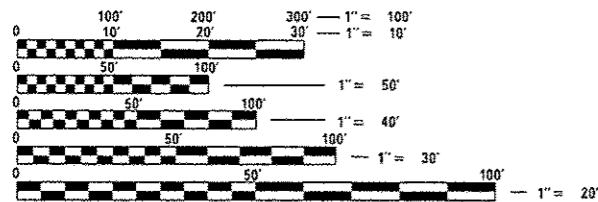
Jan 24, 2014
Omer Osman P.E.
DIRECTOR OF HIGHWAYS, CHIEF ENGINEER

**PRINTED BY THE AUTHORITY
OF THE STATE OF ILLINOIS**

FOR INDEX OF SHEETS, SEE SHEET NO. 2

HIGHWAY STANDARDS

000001-06	630301-06	701451-02	BLR 21-9
001001-02	631011-09	701456-03	
280001-07	631032-08	701701-09	
353001-04	635006-03	701901-03	
442101-07	635011-02	720001-01	
442201-03	701006-05	720006-04	
542301-03	701101-04	720011-01	
602401-03	701201-04	780001-04	
604001-03	701301-04	781001-03	
606001-05	701306-03	782001	
606301-04	701311-03	825001-01	
630001-10	701326-04	830021-02	
	701427-02	836001-02	
	701106-02	805001-02	
		821101	
		838001	

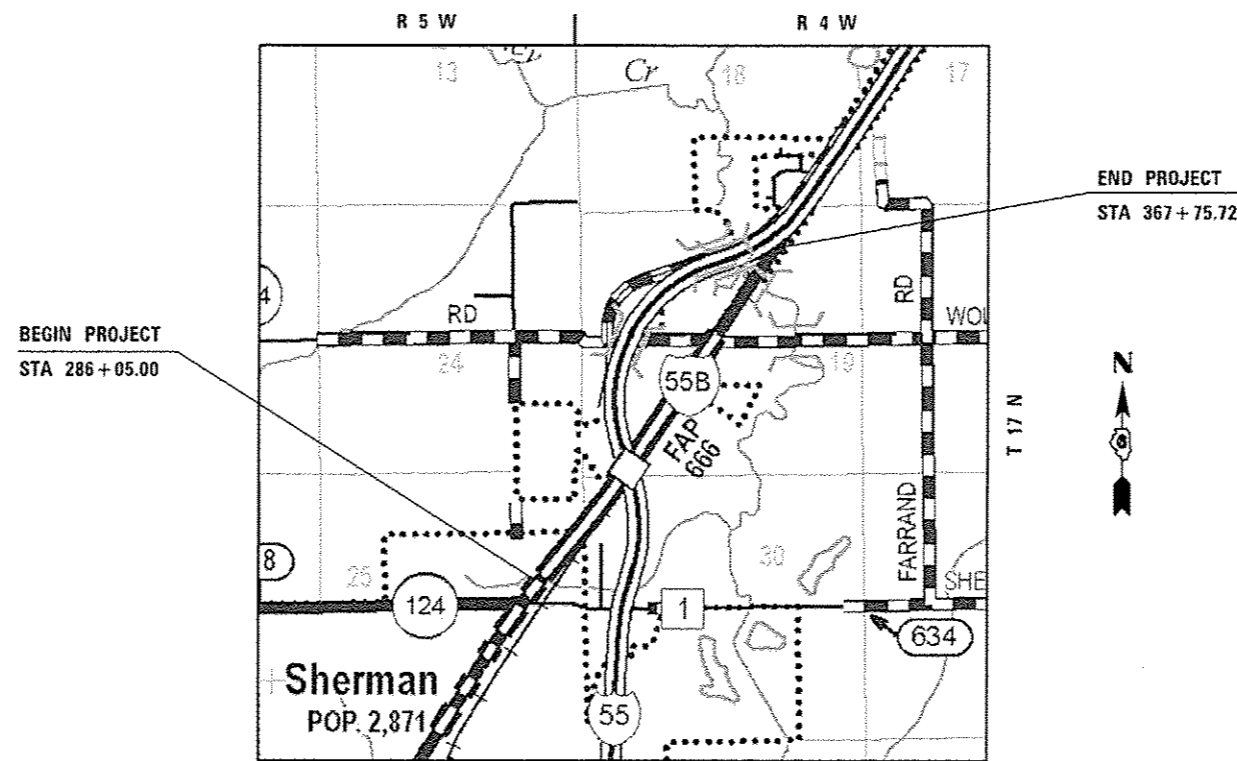


FULL SIZE PLANS HAVE BEEN PREPARED USING STANDARD ENGINEERING SCALES. REDUCED SIZED PLANS WILL NOT CONFORM TO STANDARD SCALES. IN MAKING MEASUREMENTS ON REDUCED PLANS, THE ABOVE SCALES MAY BE USED.

J.U.L.I.E.
JOINT UTILITY LOCATION INFORMATION FOR EXCAVATION
1-800-892-0123
OR 811

PROJECT ENGINEER: JEFF MYERS 217-782-4761
SQUAD LEADER: ED KERN 217-524-7547

CONTRACT NO. 72F50



GROSS LENGTH = 8,170.7 FT. = 1.56 MILE
NET LENGTH = 8,170.7 FT. = 1.56 MILE