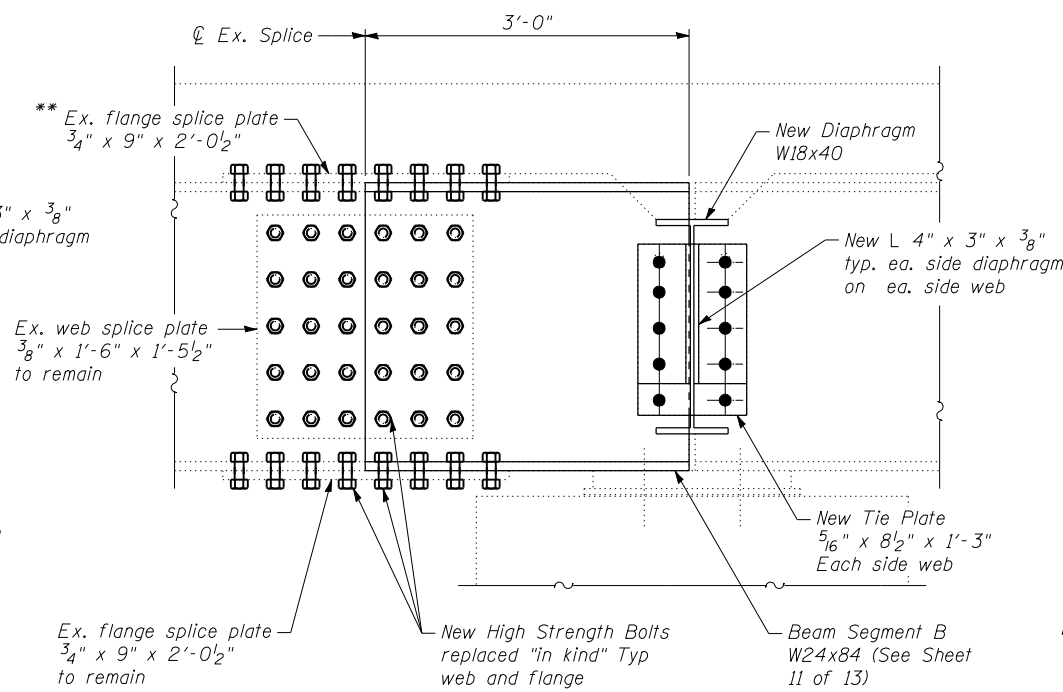
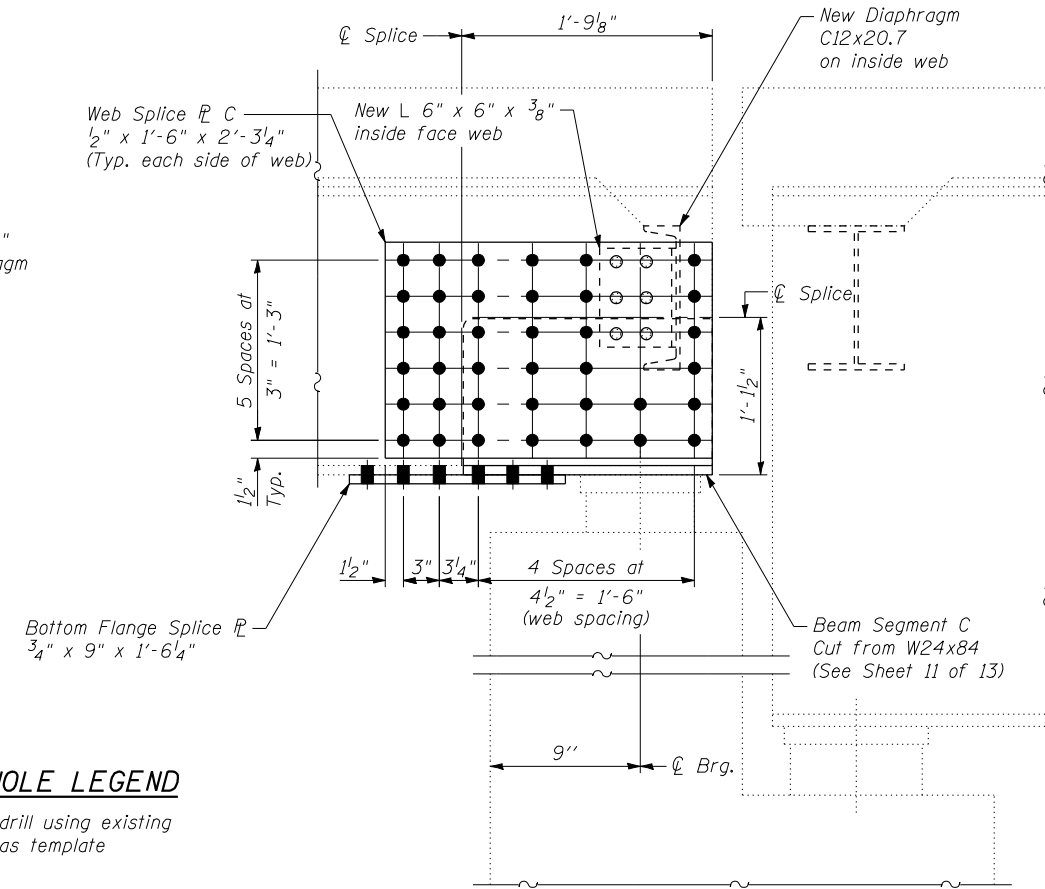


**REPAIR A**  
(8 Required)



**REPAIR B**  
(2 Required)



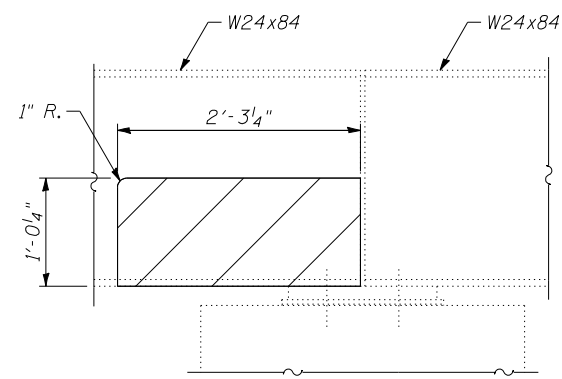
**REPAIR C**  
(2 Required)

**BOLT HOLE LEGEND**

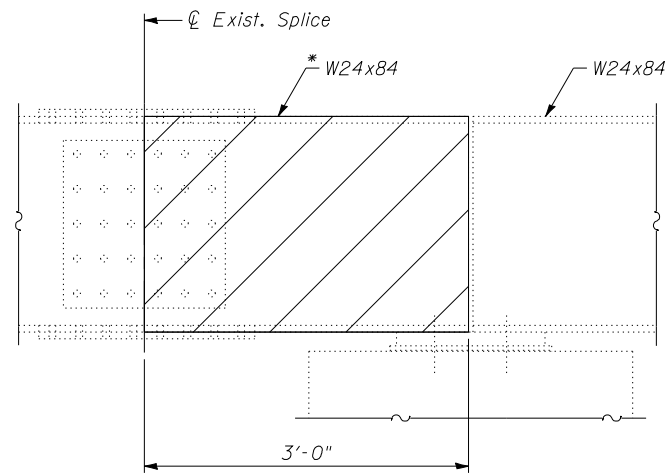
○ Field drill using existing steel as template

\* Disconnect splice to remove existing 3'-0" W24x84

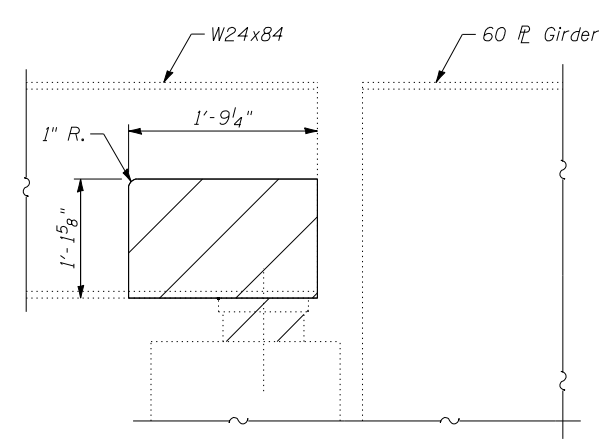
\*\* Existing top flange splice plate to remain unless replacement is deemed necessary by the Engineer



**REMOVAL DETAIL FOR REPAIR A**  
(Diaphragm and clip L's not shown for clarity)



**REMOVAL DETAIL FOR REPAIR B**  
(Diaphragm and clip L's not shown for clarity)



**REMOVAL DETAIL FOR REPAIR C**  
(Diaphragm and clip L's not shown for clarity)

REACTION TABLE (k)		
	Span 1, 2, 4 & 5	Span 3
R <sub>P</sub> (k)	32.7	70.7
LL (k)	23.4	39.2
Imp (k)	7.0	8.0
Min. Shoring & Cribbing Capacity (k)	71.9	141.5

Notes:  
Temporary Shoring and Cribbing shall be in place prior to removal at each repair location and will remain in place until bearings and repairs are in place at that location

FILE NAME = 72082-010-repairs-e.cadgn  
CB PROJECT NO. 07084-3

**Coombe-Bloxdorf P.C.**  
- CIVIL ENGINEERS -  
- STRUCTURAL ENGINEERS -  
- LAND SURVEYORS -  
Design Firm License No. 184-002703

USER NAME = .MML	DESIGNED - GJB	REVISED -
PLOT SCALE = 1:4.000000 ' / IN.	CHECKED - MCB	REVISED -
PLOT DATE = 10/23/2013	DRAWN - CFC	REVISED -
	CHECKED - MCB/CME	REVISED -

**STATE OF ILLINOIS**  
**DEPARTMENT OF TRANSPORTATION**

**REPAIRS A THRU C**  
**STRUCTURE NO. 054-0009**

SHEET NO. 10 OF 13 SHEETS

F.A.P. RTE.	SECTION	COUNTY	TOTAL SHEETS	SHEET NO.
717	(102B-1, 102CR, 102BR-2RS-5)	LOGAN	218	87
CONTRACT NO. 72B82				
ILLINOIS FED. AID PROJECT				