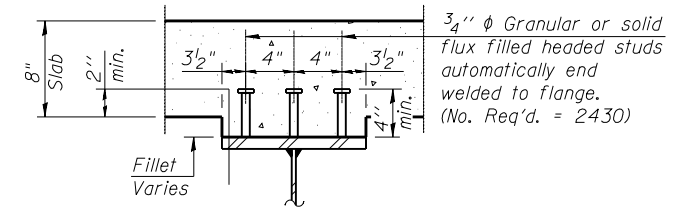
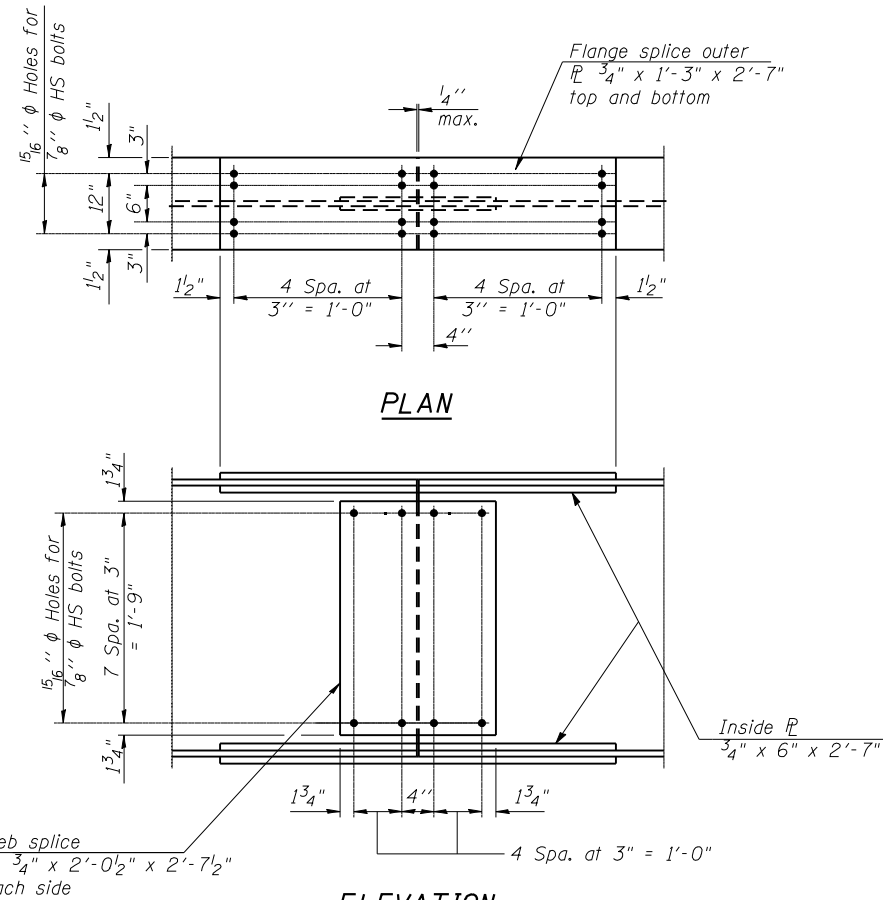


BEAM ELEVATION
(Showing shear connector spacing)



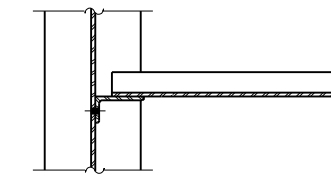
SECTION A-A



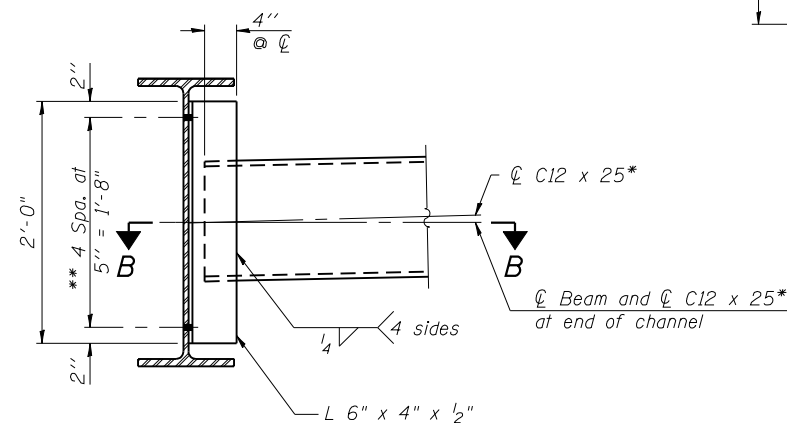
ELEVATION

SPLICE DETAIL
(6 Required)

Note:
Splice Plates shall conform to the Impact Testing Requirement, Zone 2.



SECTION B-B

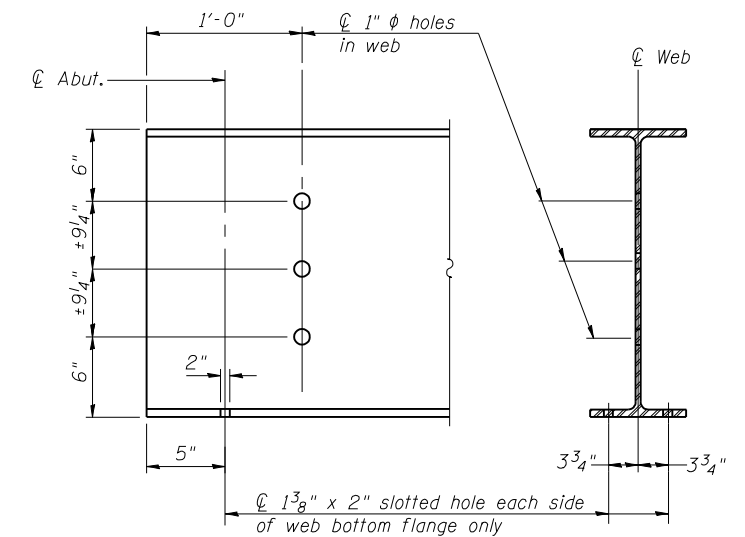


DIAPHRAGM D
(35 required)

Note:
Two hardened washers required for each set of oversized holes.

* Alternate C12x30 channels are permitted to facilitate material acquisition. Calculated weight of structural steel is based on the lighter section. The alternate, if utilized, shall be provided at no additional cost to the Department.

** 3/4" diameter HS bolts, 15/16" diameter holes



END OF BEAM DETAIL
(Showing required hole locations)

FILE NAME = 72B82-013-1-struct-steel-detail.dgn
CB PROJECT NO. 07284-B

Coombe-Bloxdorf P.C.
- CIVIL ENGINEERS -
- STRUCTURAL ENGINEERS -
- LAND SURVEYORS -
Design Firm License No. 184-002703

USER NAME = .MML.	DESIGNED - AMC	REVISED -
PLOT SCALE = 16:0.000000 ' / IN.	CHECKED - MCB	REVISED -
PLOT DATE = 10/23/2013	DRAWN - CFC	REVISED -
	CHECKED - MCB	REVISED -

STATE OF ILLINOIS
DEPARTMENT OF TRANSPORTATION

STRUCTURAL STEEL DETAILS
STRUCTURE NO. 054-0515

SHEET NO. 13 OF 23 SHEETS

F.A.P. RTE.	SECTION	COUNTY	TOTAL SHEETS	SHEET NO.
717	(102B-1, 102CR, 102BR-2RS-5)	LOGAN	218	67
CONTRACT NO. 72B82				

ILLINOIS FED. AID PROJECT