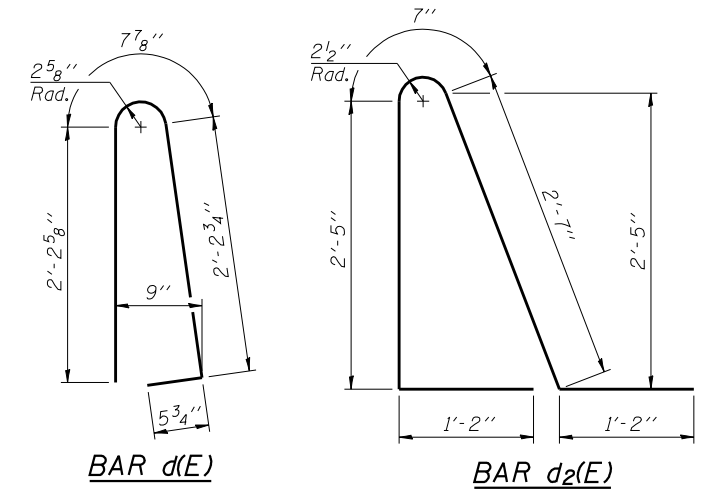


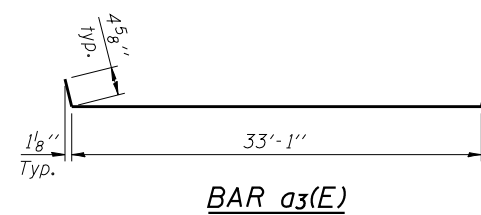
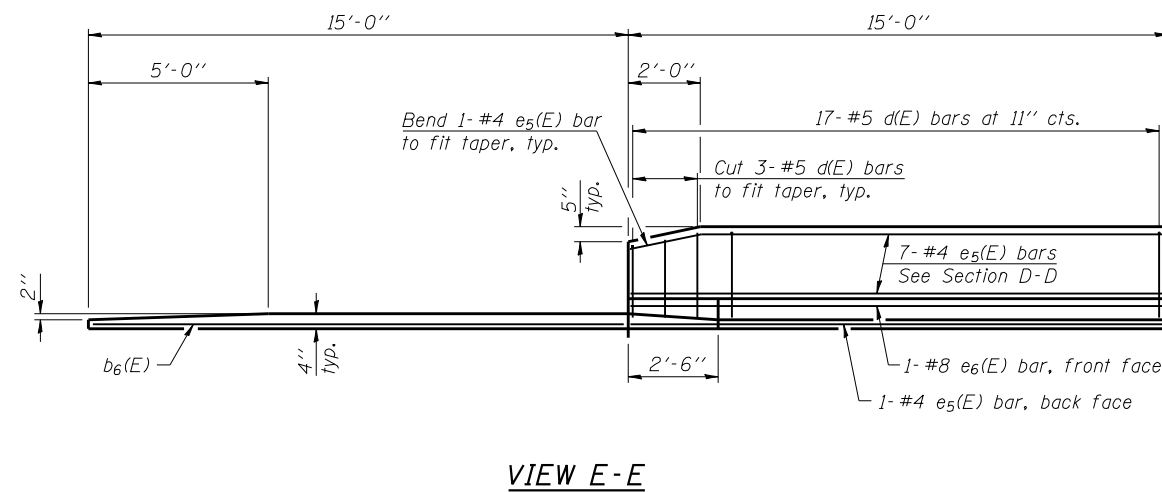
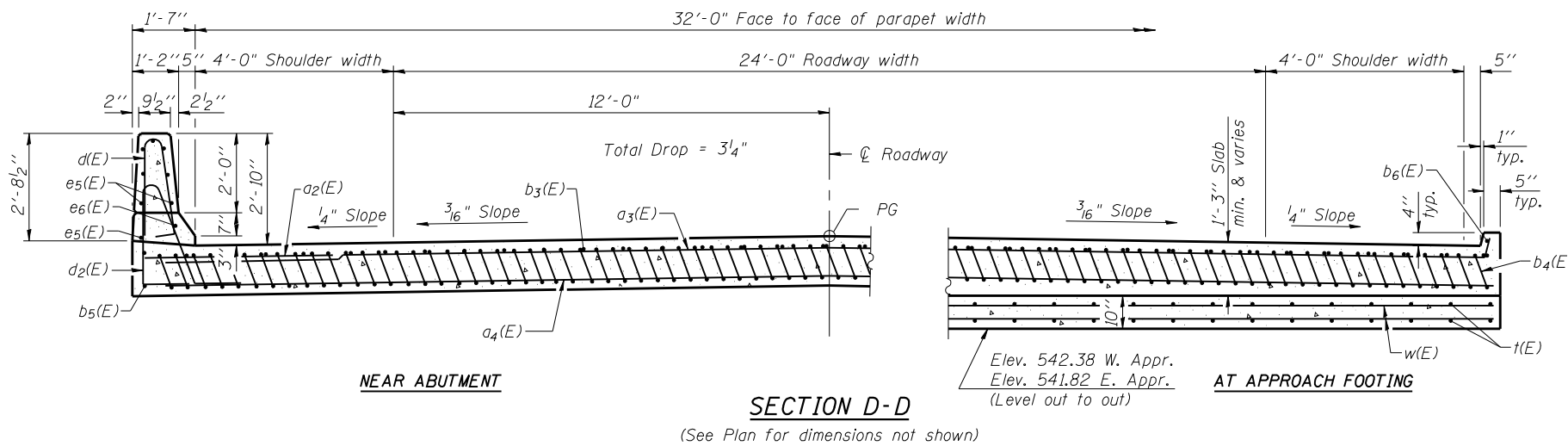
Notes:

See sheet 11 of 23 for Detail A.
 Approach slab and parapet concrete shall be paid for as Concrete Superstructure.
 Approach footing concrete shall be paid for as Concrete Structures.
 Reinforcement shall be paid for as Reinforcement Bars, Epoxy Coated.
 For v(E) bar details, see sheet 8 of 23.
 The approach footing maximum applied service bearing pressure (Q_{max}) = 2.0 ksf.
 Cost of excavation for approach footing included with Concrete Structures.
 For Granular Backfill for Structures and drainage treatment details, see sheet 2 of 23.
 For additional parapet details, see sheet 8 of 23.



* Tilt #9 b4(E) bars as required to maintain clearance.

*** Cost included with Concrete Superstructure.



**TWO APPROACHES
 BILL OF MATERIAL**

Bar	No.	Size	Length	Shape
a2(E)	48	#6	6'-6"	—
a3(E)	50	#4	33'-11"	—
a4(E)	92	#5	33'-6"	—
b3(E)	54	#4	29'-8"	—
b4(E)	154	#9	29'-9"	—
b5(E)	4	#4	14'-8"	—
b6(E)	4	#4	14'-9"	—
d(E)	68	#5	5'-7"	—
d2(E)	68	#5	7'-11"	—
e5(E)	32	#4	14'-8"	—
e6(E)	4	#8	14'-8"	—
t(E)	136	#4	9'-8"	—
w(E)	80	#5	33'-6"	—
Concrete Superstructure			Cu. Yd.	107.3
Concrete Structures			Cu. Yd.	20.8
** Reinforcement Bars, Epoxy Coated			Pound	26,640

** 22,970 lbs (Superstructure)
 3,670 lbs (Substructure)

FILE NAME = 72B82-011-ep-01-det.dgn
 CB PROJECT NO. 072B82-0

BA-0 12-12-12

Coombe-Bloxdorf P.C.
 CIVIL ENGINEERS-
 STRUCTURAL ENGINEERS-
 LAND SURVEYORS
 Design Firm License No. 184-002703

USER NAME = .MML.	DESIGNED - AMC	REVISED -
PLOT SCALE = 0.1667' / IN.	CHECKED - MCB	REVISED -
PLOT DATE = 10/23/2013	DRAWN - MML	REVISED -
	CHECKED - MCB	REVISED -

**STATE OF ILLINOIS
 DEPARTMENT OF TRANSPORTATION**

**BRIDGE APPROACH SLAB DETAILS
 STRUCTURE NO. 054-0515**

SHEET NO. 11 OF 23 SHEETS

F.A.P. RTE.	SECTION	COUNTY	TOTAL SHEETS	SHEET NO.
717	1102B-1, 102CR, 102BR-2/RS-5	LOGAN	218	65
CONTRACT NO. 72B82				
ILLINOIS FED. AID PROJECT				