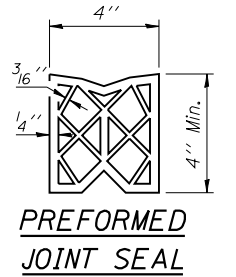
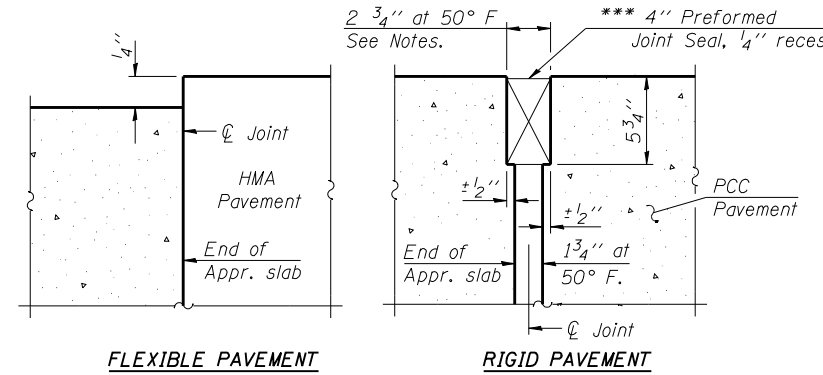
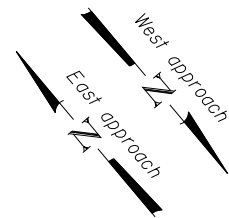
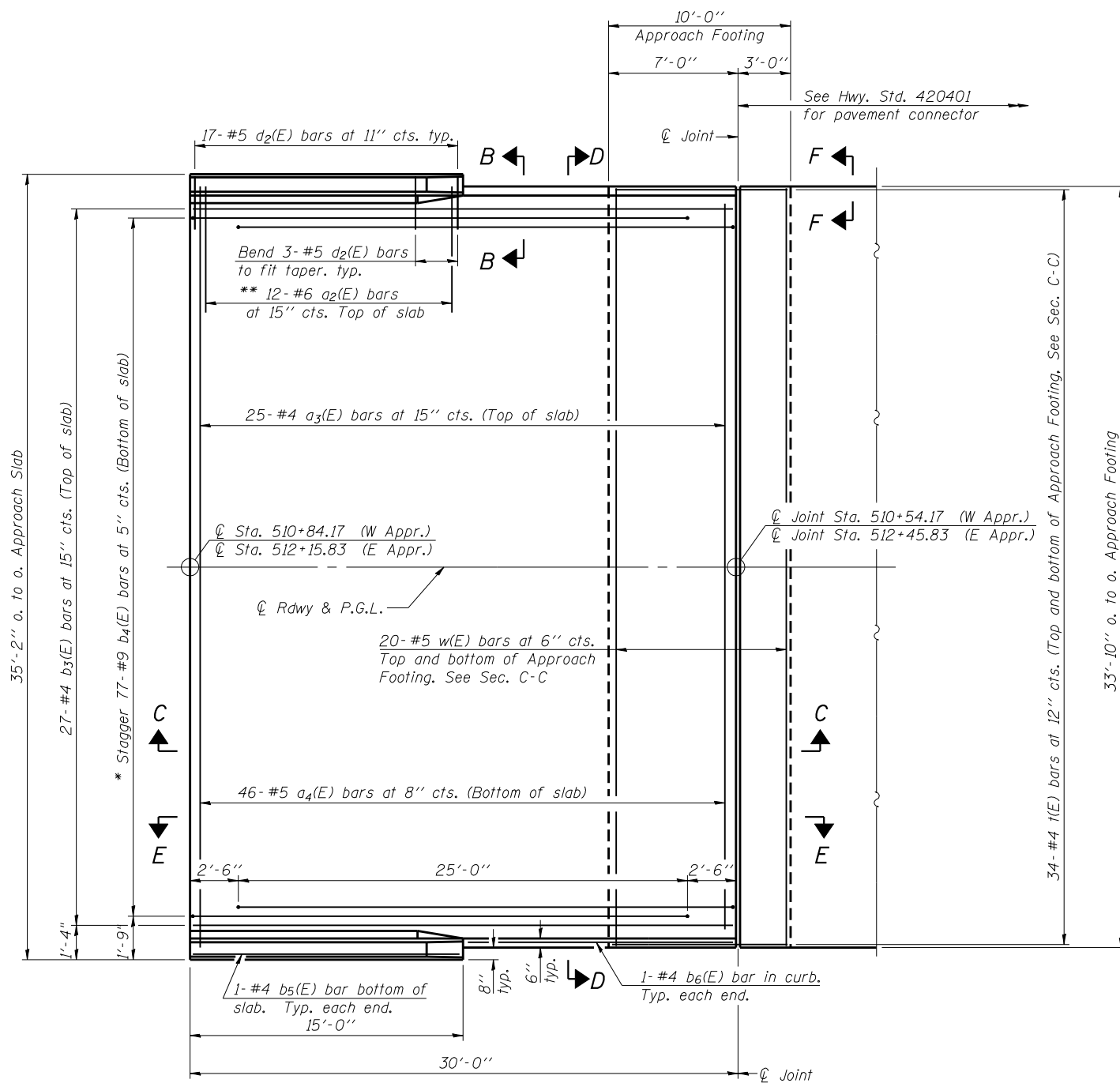
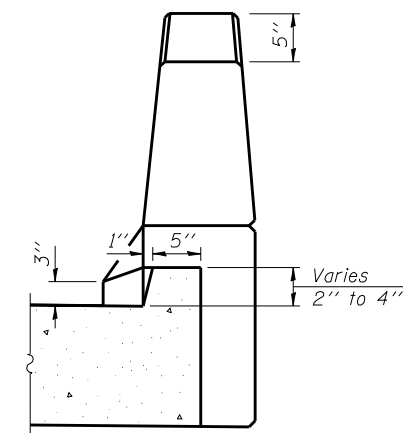
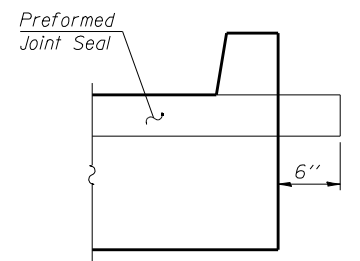


Notes:  
 See sheet 11 of 23 for Sections C-C & D-D and View E-E.  
 $a_3(E)$  and  $a_4(E)$  bar spacings measured along  $\varnothing$  Rdwy.  
 The joint opening shall be determined per Article 520.04 except that on jointless structures, the distance described as the bridge length between the nearest fixed bearings each way from the joint shall be taken as half the bridge length plus the approach slab length. The minimum dimension shall be  $1\frac{1}{2}$ " for installation purposes.

\*\*\* Cost included with Concrete Superstructure.



**DETAIL A**



\* Tilt #9  $b_4(E)$  bars as required to maintain clearance.  
 \*\* Space between  $a_3(E)$  bars, typ. ea. parapet.

BA-0 12-12-12

**Coombe-Bloxdorf P.C.**  
 CIVIL ENGINEERS-  
 STRUCTURAL ENGINEERS-  
 LAND SURVEYORS  
 Design Firm License No. 184-002703

USER NAME = .MML.	DESIGNED - AMC	REVISED -
PLOT SCALE = 0.1667' / IN.	CHECKED - MCB	REVISED -
PLOT DATE = 10/23/2013	DRAWN - MML	REVISED -
	CHECKED - MCB	REVISED -

**STATE OF ILLINOIS**  
**DEPARTMENT OF TRANSPORTATION**

**BRIDGE APPROACH SLAB DETAILS**  
**STRUCTURE NO. 054-0515**

SHEET NO. 10 OF 23 SHEETS

F.A.P. RTE.	SECTION	COUNTY	TOTAL SHEETS	SHEET NO.
717	102B-1, 102CR, 102BR-2IRS-5	LOGAN	218	64
CONTRACT NO. 72B82				

ILLINOIS FED. AID PROJECT

FILE NAME = 72B82-010-APP-01.dgn  
 PROJECT NO. 072B82-8