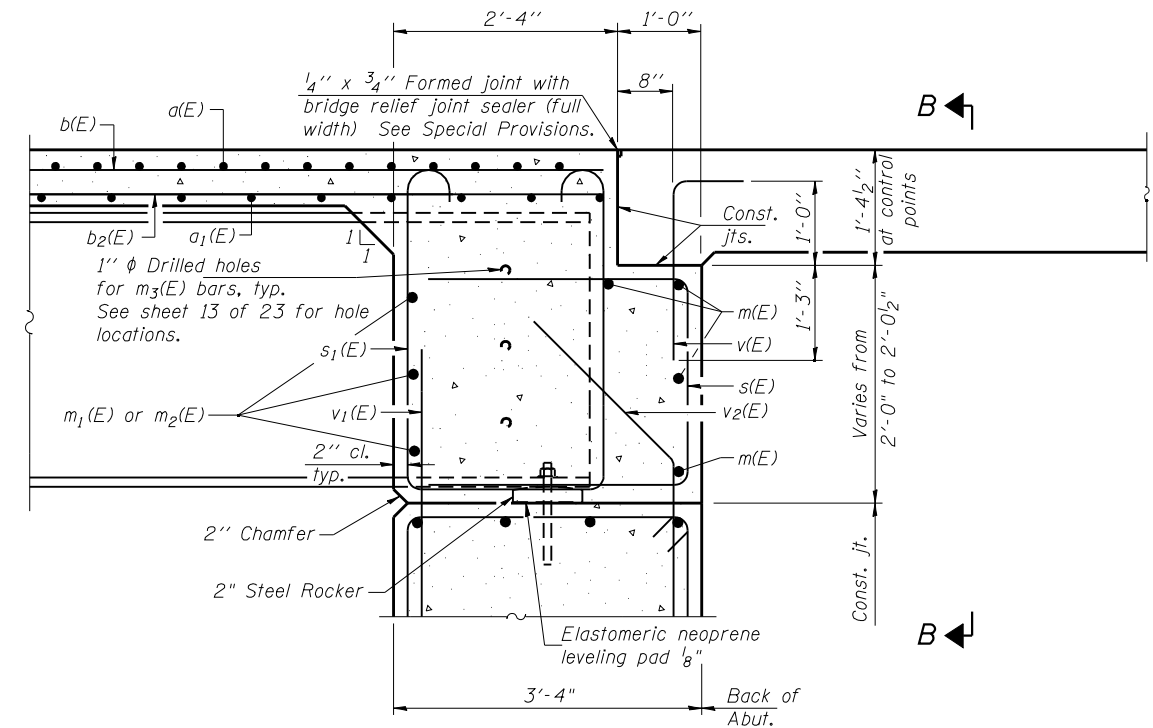
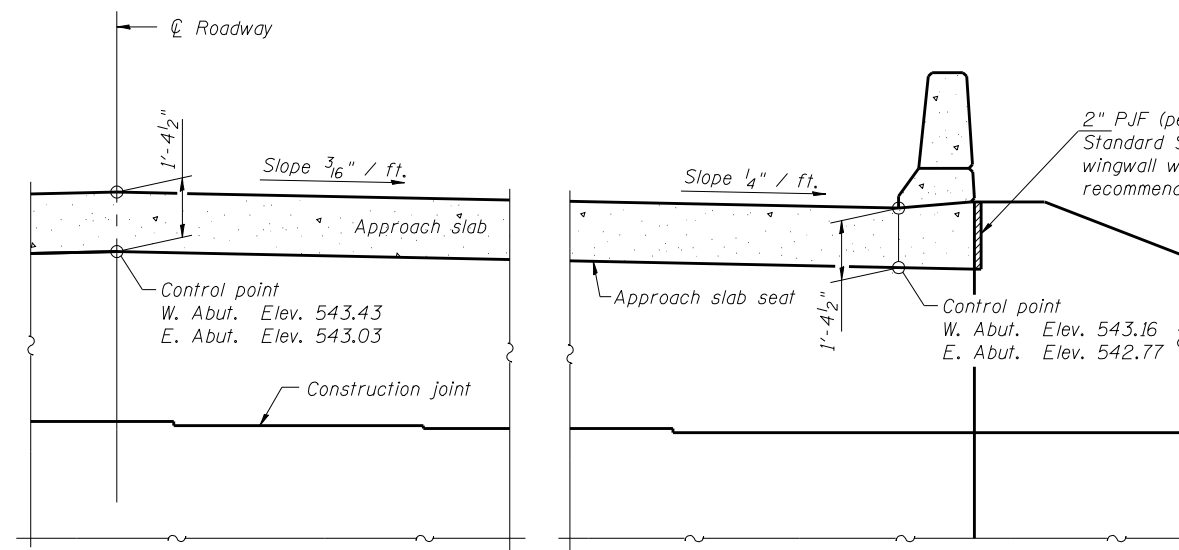


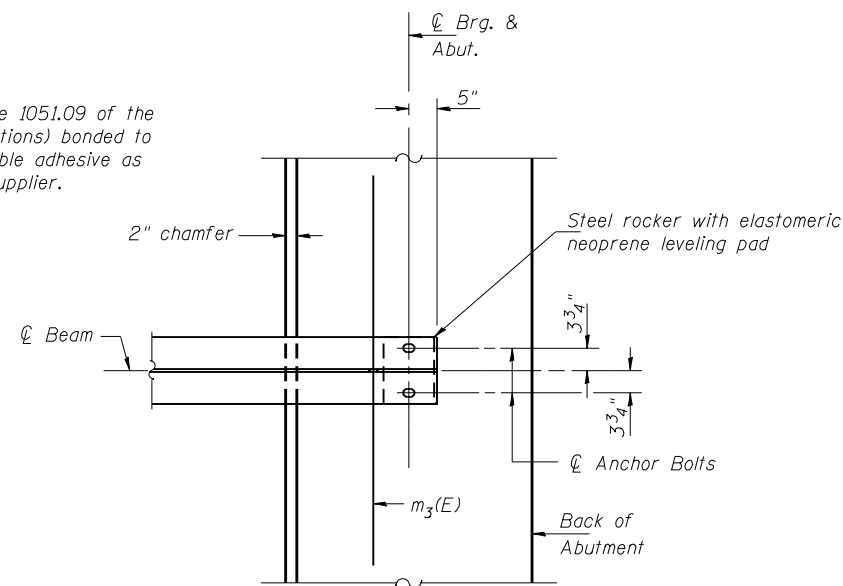
DIAPHRAGM ELEVATION AT ABUTMENT



SECTION A-A



SECTION B-B



PARTIAL PLAN AT ABUTMENT
(Showing bottom flange of beam)

Notes:
 Reinforcement bars in diaphragm are billed with superstructure on sheet 8 of 23.
 Concrete in diaphragm is included with Concrete Superstructure on sheet 8 of 23.
 For details of bars s(E), s1(E) and v(E) see sheet 8 of 23.
 The approach slab seat shall have a constant slope determined from the control points shown.
 For bearing details see sheet 14 of 23.

FILE NAME = 72882-009-diastr-dgn
 PROJECT NO. 072884-B

DSI-2440-0

8-31-12

Coombe-Bloxdorf P.C.
 CIVIL ENGINEERS-
 STRUCTURAL ENGINEERS-
 LAND SURVEYORS
 Design Firm License No. 184-002703

USER NAME = .MML.	DESIGNED - AMC	REVISED -
PLOT SCALE = 0.1667' / IN.	CHECKED - MCB	REVISED -
PLOT DATE = 10/23/2013	DRAWN - MML	REVISED -
	CHECKED - MCB	REVISED -

STATE OF ILLINOIS
DEPARTMENT OF TRANSPORTATION

DIAPHRAGM DETAILS
STRUCTURE NO. 054-0515

SHEET NO. 9 OF 23 SHEETS

F.A.P. RTE.	SECTION	COUNTY	TOTAL SHEETS	SHEET NO.
717	102B-1, 102CR, 102BR-2IRS-5	LOGAN	218	63
CONTRACT NO. 72882				
ILLINOIS FED. AID PROJECT				