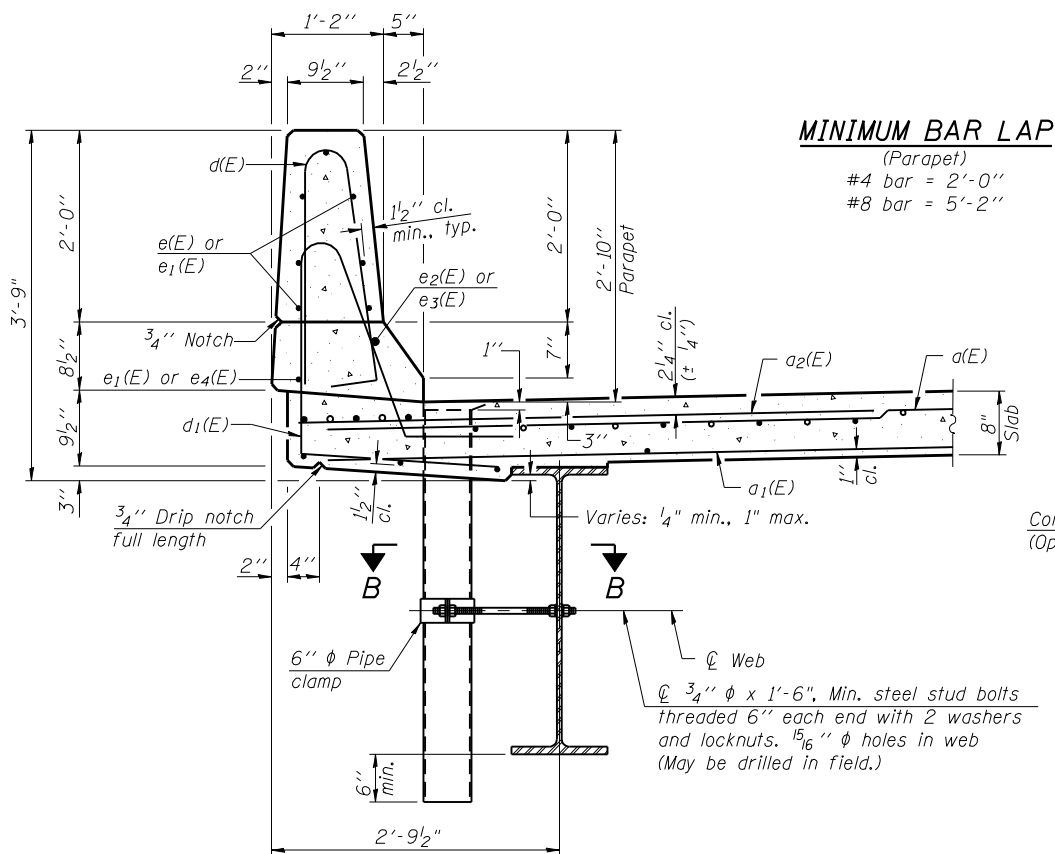
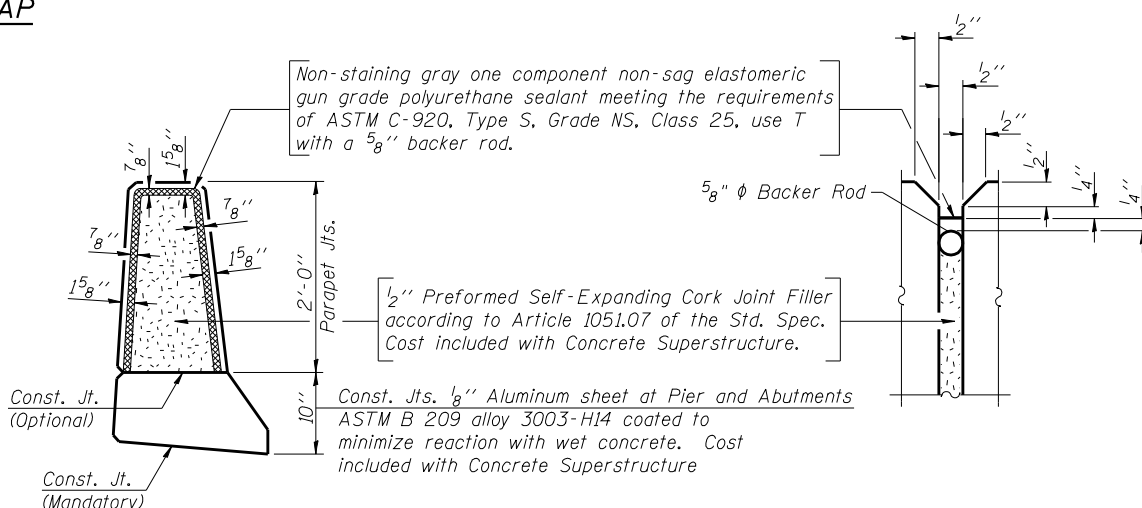


INSIDE ELEVATION OF PARAPET



SECTION THRU PARAPET

MINIMUM BAR LAP
(Parapet)
#4 bar = 2'-0"
#8 bar = 5'-2"



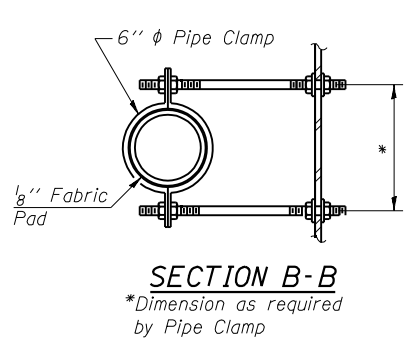
PARAPET JOINT DETAILS

Notes:
Floor drains need not be painted.
Fiberglass pipe shall conform to ASTM D 2996, with short-time rupture strength hoop tensile stress of 30,000 p.s.i. minimum.
Galvanize clamping device according to AASHTO M232. Cost of clamping device and inserts is included with Floor Drains.
Drains shall be located clear of all diaphragms.

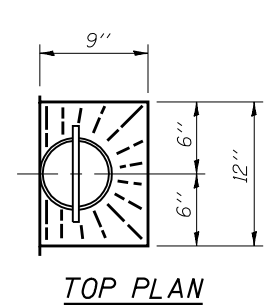
SUPERSTRUCTURE
BILL OF MATERIAL

| Bar | No. | Size | Length | Shape | |
|----------------------------------|-----|------|---------|----------|--------|
| a(E) | 226 | #5 | 34'-6" | — | |
| a1(E) | 159 | #5 | 34'-2" | — | |
| a2(E) | 452 | #6 | 6'-6" | — | |
| b(E) | 152 | #5 | 34'-10" | — | |
| b1(E) | 35 | #6 | 38'-0" | — | |
| b2(E) | 155 | #5 | 28'-4" | — | |
| d(E) | 288 | #5 | 5'-7" | ⌒ | |
| d1(E) | 288 | #5 | 7'-4" | ⌒ | |
| e(E) | 84 | #4 | 18'-4" | — | |
| e1(E) | 32 | #4 | 9'-5" | — | |
| e2(E) | 8 | #8 | 30'-6" | — | |
| e3(E) | 4 | #8 | 9'-5" | — | |
| e4(E) | 8 | #4 | 28'-11" | — | |
| m(E) | 8 | #6 | 34'-10" | — | |
| m1(E) | 30 | #6 | 5'-7" | — | |
| m2(E) | 12 | #6 | 2'-5" | — | |
| m3(E) | 36 | #5 | 4'-0" | — | |
| s(E) | 72 | #5 | 7'-4" | ⌒ | |
| s1(E) | 72 | #5 | 9'-0" | ⌒ | |
| v(E) | 70 | #5 | 3'-1" | ⌒ | |
| Reinforcement Bars, Epoxy Coated | | | | Pound | 38,640 |
| Concrete Superstructure | | | | Cu. Yds. | 170.8 |

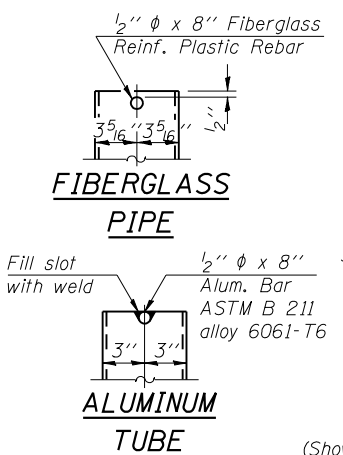
Bars indicated thus 1 x 2-#8 etc. indicates 1 line of bars with 2 lengths per line.



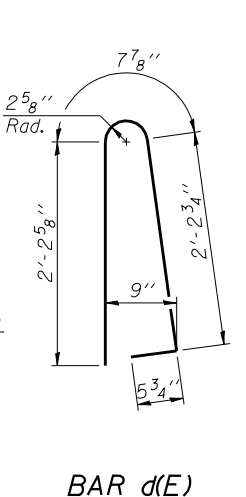
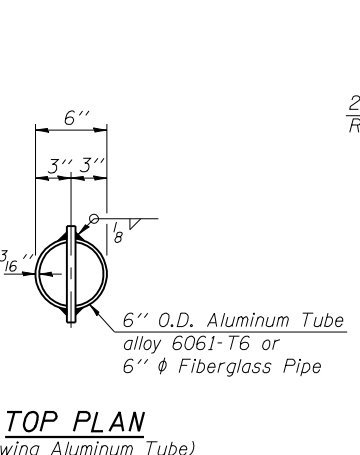
SECTION B-B
*Dimension as required by Pipe Clamp



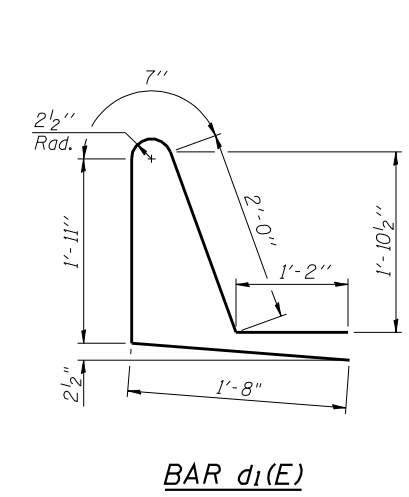
TOP PLAN



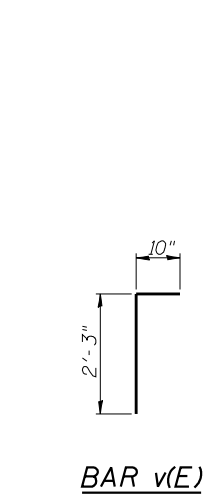
ALUMINUM TUBE
TOP PLAN (Showing Aluminum Tube)



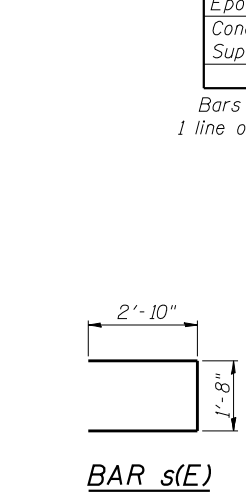
BAR d(E)



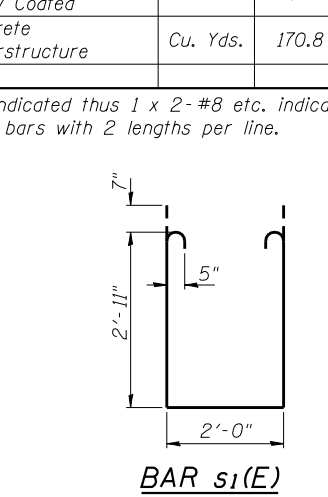
BAR d1(E)



BAR v(E)



BAR s(E)



BAR s1(E)

FILE NAME = 72882-028-super-detailed.dgn
CB PROJECT NO. 07884-B

SI-D2-0

8-31-12

Coombe-Bloxdorf P.C.
CIVIL ENGINEERS-
STRUCTURAL ENGINEERS-
LAND SURVEYORS
Design Firm License No. 184-002703

| | | |
|----------------------------|----------------|-----------|
| USER NAME = .MML. | DESIGNED - AMC | REVISED - |
| PLOT SCALE = 0.1667' / IN. | CHECKED - MCB | REVISED - |
| PLOT DATE = 10/23/2013 | DRAWN - MML | REVISED - |
| | CHECKED - MCB | REVISED - |

STATE OF ILLINOIS
DEPARTMENT OF TRANSPORTATION

SUPERSTRUCTURE DETAILS
STRUCTURE NO. 054-0515

SHEET NO. 8 OF 23 SHEETS

| | | | | |
|---------------------------|-----------------------------|--------|--------------|-----------|
| F.A.P. RTE. | SECTION | COUNTY | TOTAL SHEETS | SHEET NO. |
| 717 | 102B-1, 102CR, 102BR-2/RS-5 | LOGAN | 218 | 62 |
| CONTRACT NO. 72B82 | | | | |
| ILLINOIS FED. AID PROJECT | | | | |