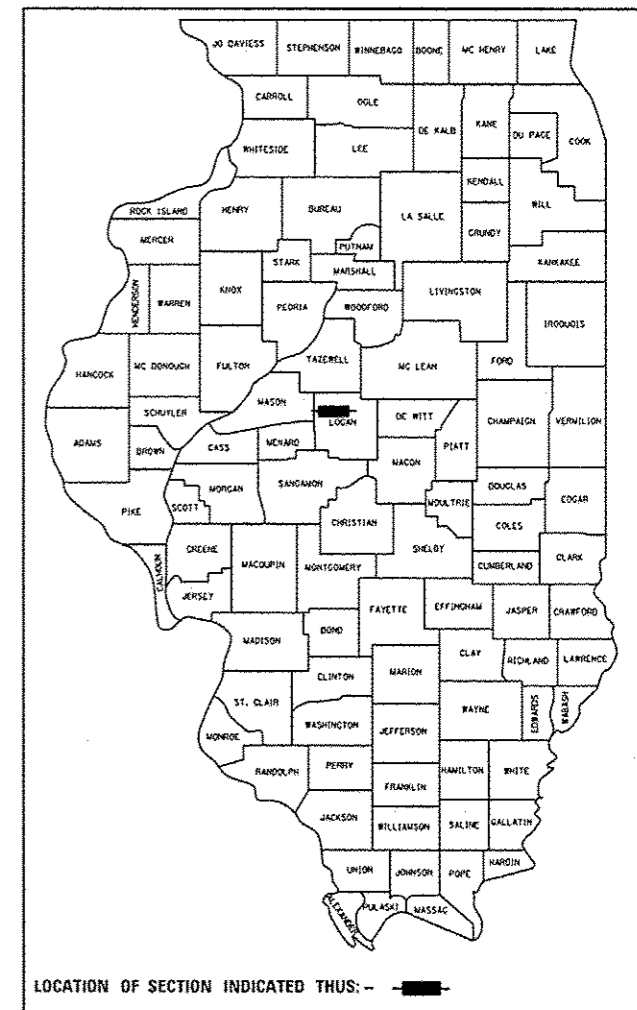


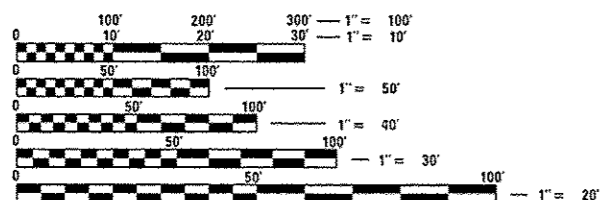
STATE OF ILLINOIS
 DEPARTMENT OF TRANSPORTATION
 DIVISION OF HIGHWAYS
**PROPOSED
 HIGHWAY PLANS**

F.A.P. RTE.	SECTION	COUNTY	TOTAL SHEETS	SHEET NO.
717	(102B-1, 102CR, 102BR-2) RS-5	LOGAN	218	1
FED. ROAD DIST. NO. 6		ILLINOIS	CONTRACT NO. 72B82	

D-96-044-08



FOR INDEX OF SHEETS, SEE SHEET NO. 2
 FOR SUMMARY OF QUANTITIES, SEE SHEET NO. 4



FULL SIZE PLANS HAVE BEEN PREPARED USING STANDARD ENGINEERING SCALES. REDUCED SIZED PLANS WILL NOT CONFORM TO STANDARD SCALES. IN MAKING MEASUREMENTS ON REDUCED PLANS, THE ABOVE SCALES MAY BE USED.

FAP 717 (IL 10) - WEST OF T.R. 44
 MINOR ARTERIAL (NON-URBAN)
 ADT=2150 (2009); 2600 (2029)
 SU=4.6%, MU=6.9%
 PV=88.5%

FAP 717 (IL 10) - EAST OF T.R. 44
 MINOR ARTERIAL (NON-URBAN)
 ADT=2200 (2009); 2650 (2029)
 SU=3.4%, MU=5.6%
 PV=91.0%

T.R. 44 - NORTH OF IL 10
 ADT=125 (2006); 150 (2026)
 SU=3.0%, MU=1.0%
 PV=96.0%

T.R. 44 - SOUTH OF IL 10
 ADT=75 (2006); 100 (2026)
 SU=3.0%, MU=1.0%
 PV=96.0%

J.U.L.I.E.
 JOINT UTILITY LOCATION INFORMATION FOR EXCAVATION
 1-800-892-0123 SHERIDAN TWP. - LOGAN CO.
 OR 811

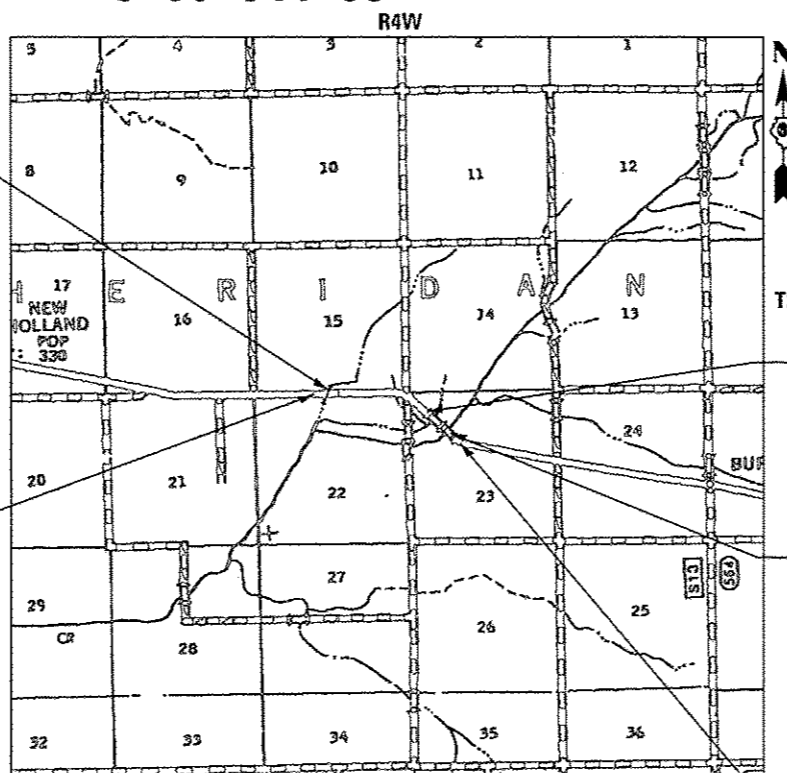
PROJECT ENGINEER: JEFF MYERS 217-782-4761
 SQUAD LEADER: ED KERN 217-524-7547

CONTRACT NO. 72B82

FAP ROUTE 717 (IL 10)
 SECTION (102B-1, 102CR, 102BR-2) RS-5
 PROJECT ACF-0717 (034)
CULVERT & BRIDGE REPLACEMENT
LOGAN COUNTY
SUGAR CREEK OVERFLOW BRIDGE
3.1 MI. E. OF NEW HOLLAND
C-96-044-08

PROPOSED CULVERT REPLACEMENT
 EXISTING SN 054-7010
 PROPOSED SN 054-7069
 STA. 488+73.19 (IL RTE 10)
 CONCRETE BOX CULVERT, 12'x9' (CAST IN PLACE)

PROPOSED IMPROVEMENT BEGINS
 STA. 484+00.00



PROPOSED BRIDGE REPLACEMENT
 EXISTING SN 054-0008
 PROPOSED SN 054-0515
 STATION 511+50.00 (IL RTE 10)
 2-SPANS 132'-0" B-B ABUTS.
 32'-0" REINF. CONC. DECK
 NO SKEW

PROPOSED BRIDGE REHABILITATION
 EXISTING SN 054-0009
 STATION 524+30.00 (IL RTE 10)
 5-SPANS 297'-6" B-B ABUTS.
 32'-0" OUT TO OUT DECK
 NO SKEW

PROPOSED IMPROVEMENT ENDS
 STA. 526+26.33

TOTAL LENGTH OF PROJECT = 4226.33 FT. = 0.800 MILE
 NET LENGTH OF PROJECT = 4226.33 FT. = 0.800 MILE

STATE OF ILLINOIS
 DEPARTMENT OF TRANSPORTATION
 DIVISION OF HIGHWAYS

SUBMITTED December 5 2013
Royan L. Priskell
 DEPUTY DIRECTOR OF HIGHWAYS, REGION ENGINEER

Jan 24 2014
John D. Baranelli, P.E.
 ENGINEER OF DESIGN AND ENVIRONMENT

Jan 24 2014
Omer Osman, P.E.
 DIRECTOR OF HIGHWAYS, CHIEF ENGINEER

BLANK, WESSELINK COOK & ASSOCIATES
 ENGINEERS - CONSULTANTS
 DECATUR, ILLINOIS



Charles W. Guthrie, Jr.
 CHARLES W. GUTHRIE, JR., P.E.
 DATE November 15 2013
 EXPIRES NOVEMBER 30, 2013

**PRINTED BY THE AUTHORITY
 OF THE STATE OF ILLINOIS**