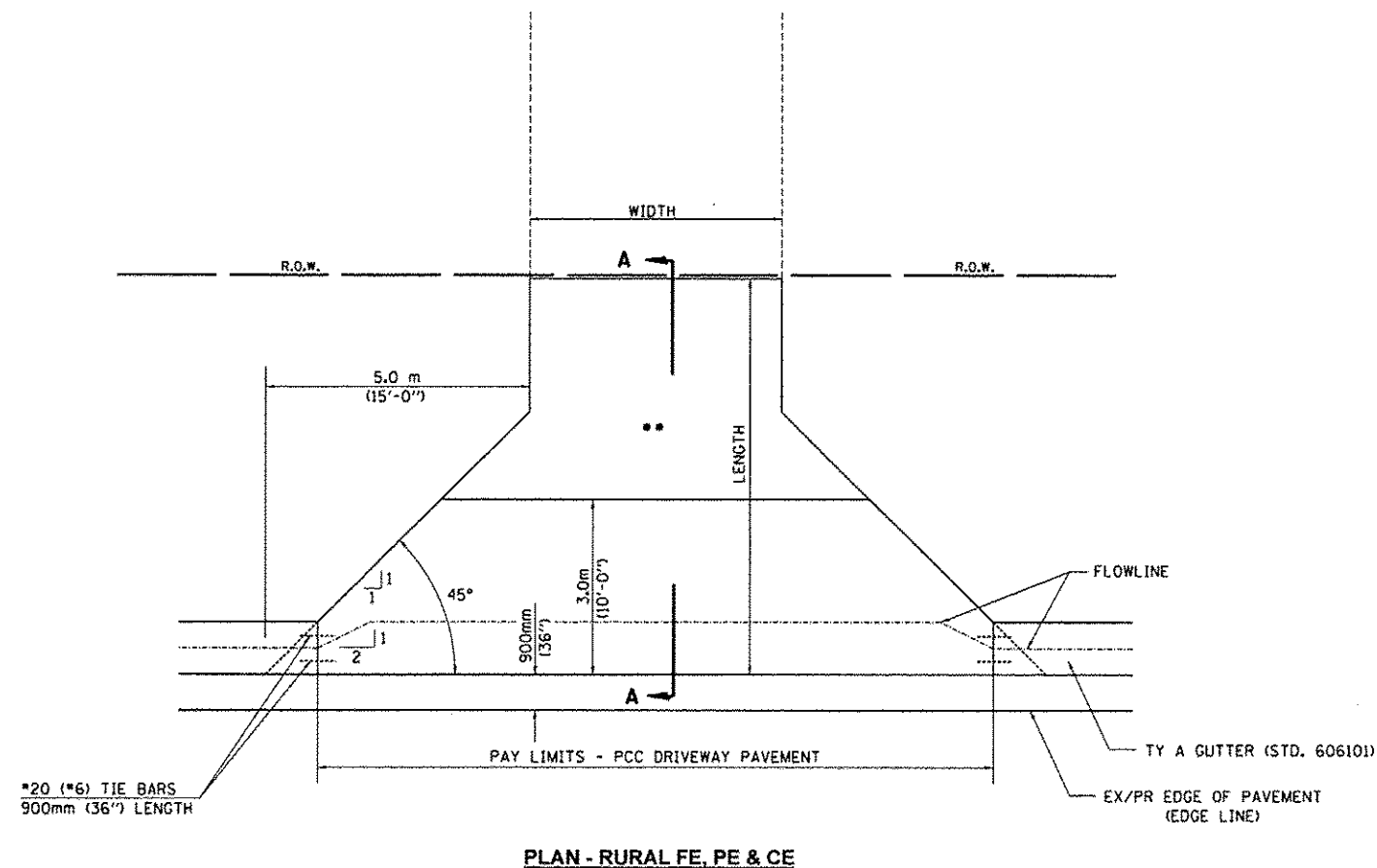
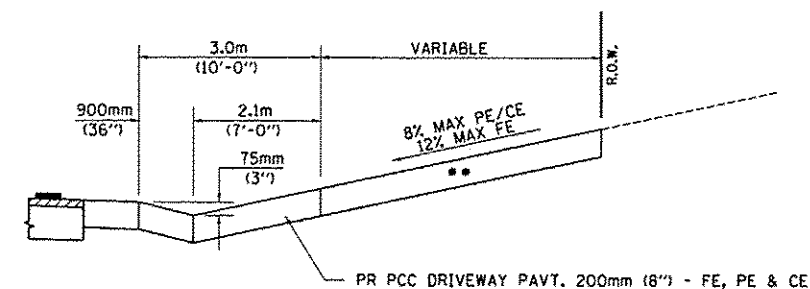


F.A.S. RTE.	SECTION	COUNTY	TOTAL SHEETS	SHEET NO.
1597	14 (W, RS-7)	ADAMS/PIKE	152	67
STA.		TO STA.		
FED. ROAD DIST. NO. 6 ILLINOIS		FED. AID PROJECT		

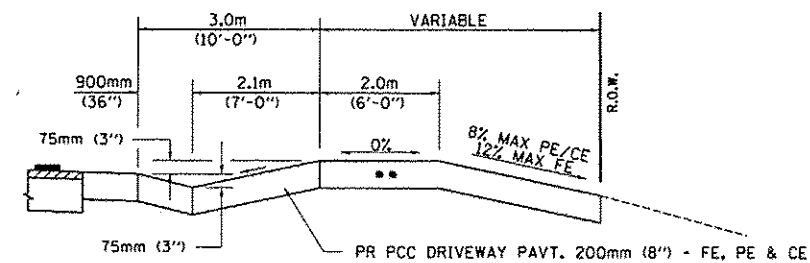


NOTE : THIS DETAIL OVERULES THE ENTRANCE DETAIL INCLUDED IN STD. 606101 ELSEWHERE HEREIN.

- MATCH IN KIND BEHIND SIDEWALK
- FOR EX EARTH OR AGGREGATE SURFACES :  
 PR AGGREGATE BASE COURSE, TYPE B 150mm (6") - PE/FE  
 PR PCC DRIVEWAY PAVT. 200mm (8") - CE
- FOR EX BITUMINOUS CONC. SURFACES :  
 PR BITUMINOUS CONCRETE 150mm (6") - PE  
 PR BITUMINOUS CONCRETE 200mm (8") - CE
- FOR EX PCC SURFACES :  
 PR PCC DRIVEWAY PAVT. 150mm (6") - PE  
 PR PCC DRIVEWAY PAVT. 200mm (8") - CE



SECTION A - A  
(CUT - SECTION)



SECTION A - A  
(FILL SECTION)

NOTES:

1. SEE PLAN SHEET / ENTRANCE PROFILE FOR LOCATION OF SIDEWALK.
2. THE COST OF FURNISHING AND INSTALLING THE 19 mm PREFORMED EXPANSION JOINT FILLER AND REINFORCEMENT BARS SHALL BE INCLUDED IN THE COST OF P.C.C. DRIVEWAY PAVEMENT.

REVISIONS	
NAME	DATE
JCN	2/19/03

ILLINOIS DEPARTMENT OF TRANSPORTATION  
**DISTRICT SIX**  
**DETAILS FOR RURAL ENTRANCE & MAILBOX TURNOUT IN STANDARD TYPE A GUTTER SECTION (3R - PROJECTS)**

SCALE: VERT.      DRAWN BY CADD  
 HORIZ.              CHECKED BY JCN  
 DATE: FEBRUARY 15, 1999