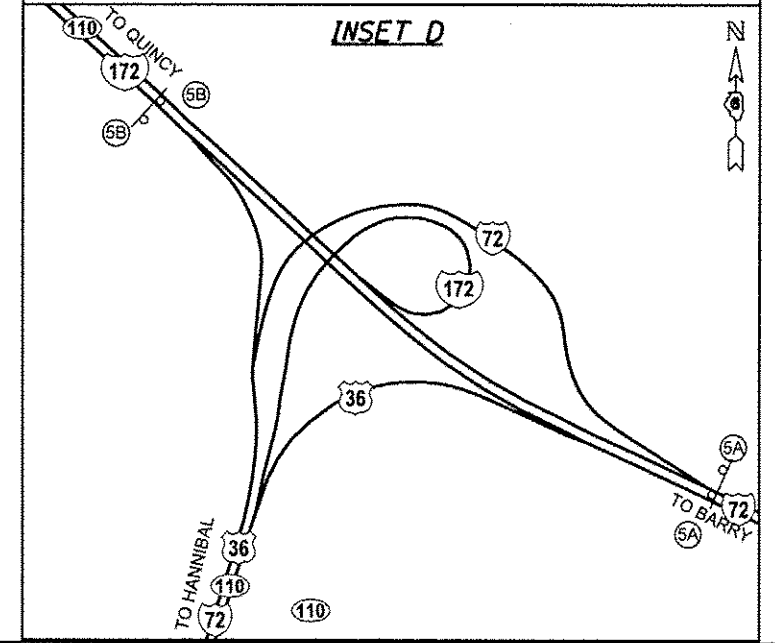
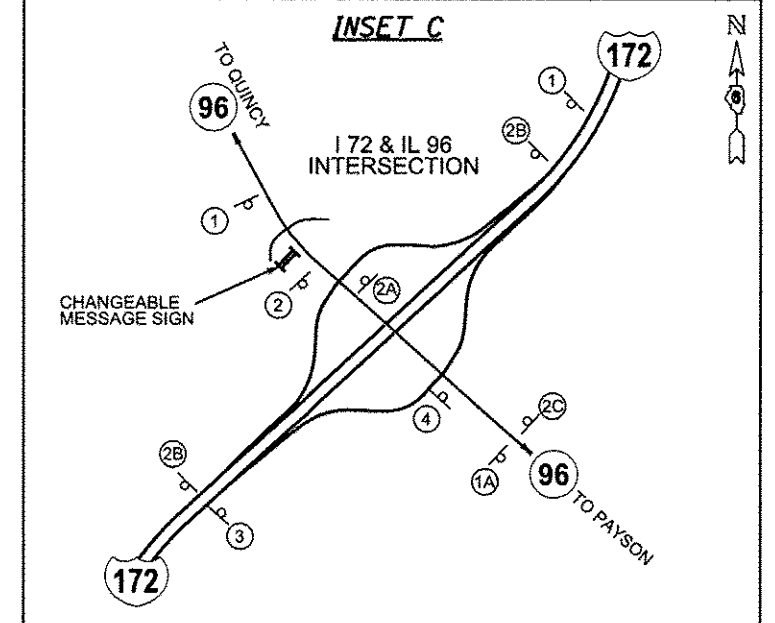
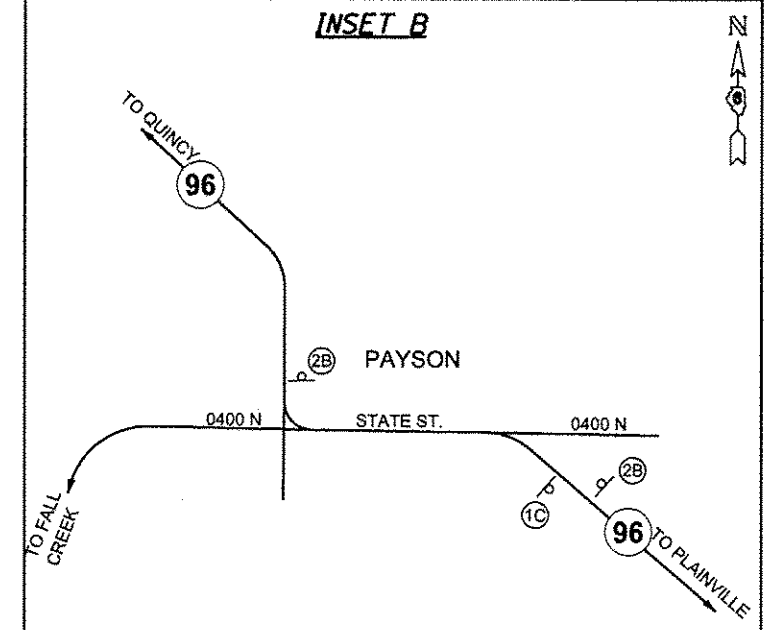
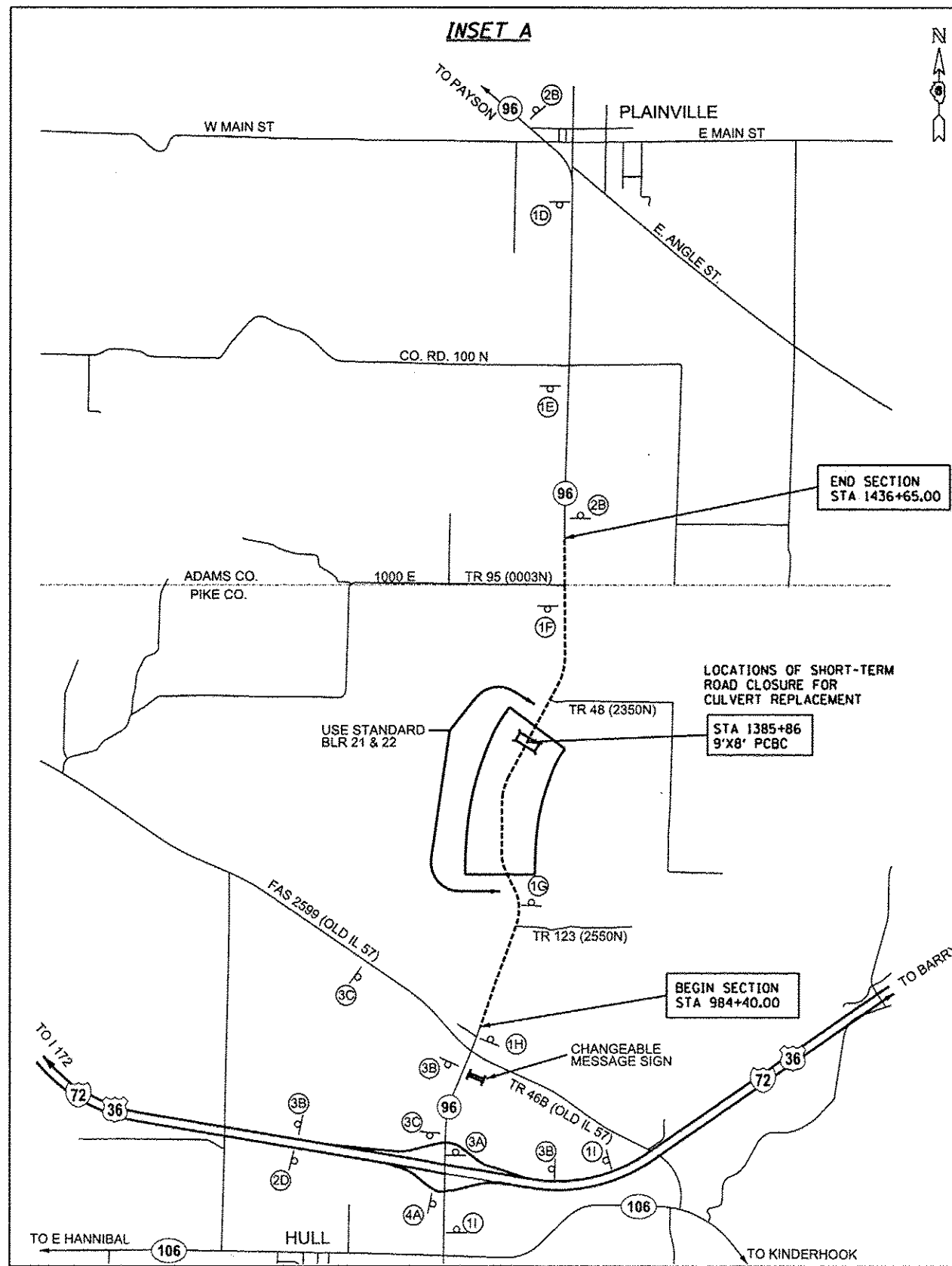


VICINITY MAP
NOT TO SCALE

NOTES

1. SEE SPECIAL PROVISIONS FOR TRAFFIC CONTROL PLAN.
2. IL 96 SHALL REMAIN OPEN TO THRU TRAFFIC EXCEPT FOR TEMPORARY CLOSURE TO INSTALL A 9'X8' PRECAST BOX CULVERT AT STA 1385+86.09.
3. ACCESS TO PRIVATE ENTRANCES MUST BE MAINTAINED AT ALL TIMES.
4. CHANGEABLE MESSAGE SIGNS ON IL 96 NORTH OF I-172 INTERCHANGE AND ON IL 96 NORTH OF I-72 INTERCHANGE SHALL NOTIFY TRAVELING PUBLIC FOR A PERIOD 2 WEEKS PRIOR AND THROUGHOUT IL 96 ROAD CLOSURE.
5. USE HIGHWAY STANDARD BLR 21 AND BLR 22 ON IL 96 AT TR 123 (2550N) AND TR 48 (2350N) AND POSITION TYPE III BARRICADES FOR LOCAL ACCESS.
6. TEMPORARY ONE LANE CLOSURE OF IL 96 WILL BE ALLOWED FOR INSTALLATION OF VARIOUS CROSS-ROAD CULVERTS USING TRAFFIC CONTROL AND PROTECTION STANDARD 701201.
7. LOCATION OF DETOUR SIGNS ARE SUBJECT TO APPROVAL OF ENGINEER.
8. FURNISHING, PLACING AND REMOVING ALL DETOUR SIGNING WILL BE PAID FOR AT THE CONTRACT LUMP SUM PRICE FOR DETOUR SIGNING. CHANGEABLE MESSAGE SIGNS WILL BE MEASURED AND PAID FOR SEPARATELY.



FILE NAME HOT_DETOURS.dgn	USER NAME natal	DESIGNED DBS	REVISED -	STATE OF ILLINOIS DEPARTMENT OF TRANSPORTATION	MAINTENANCE OF TRAFFIC DETOURS - LOCAL ROADS		F.A.S. RTE. 1597	SECTION 14 (W, RS-7)	COUNTY ADAMS/PIKE	TOTAL SHEETS 152	SHEET NO. 42	
	PLOT SCALE 1/8" = 100'	DRAWN DEW	REVISED -				CONTRACT NO. 72781					
	PLOT DATE 07/16/2013	CHECKED DBS	REVISED -				ILLINOIS FED. AID PROJECT					
		DATE 07/2013	REVISED -	SCALE: NONE		SHEET NO. 1 OF 2 SHEETS		STA. TO STA.				