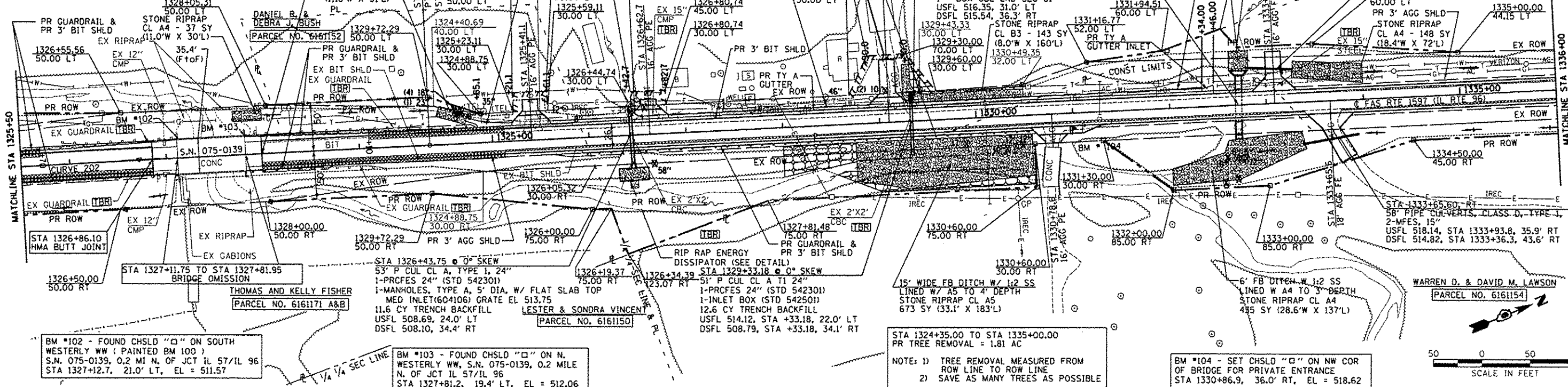


F.A.S. RTE.	SECTION	COUNTY	TOTAL SHEETS	SHEET NO.
1597	14 (W, RS-7)	ADAMS/PIKE	152	32

STA. 1325+50.00 TO STA. 1336+00.00
 FED. ROAD DIST. NO. 6 ILLINOIS FED. AID PROJECT

EX / PROP CURVE 202
 PI STA 1326+72.30
 $\Delta = 0^\circ 38' 03''$ (RT)
 $D = 0^\circ 06' 20''$
 $R = 300.00'$
 $L = 54,209.13'$
 $E = 599.99'$
 $C = 0.83'$
 PC STA 1323+72.30
 PT STA 1329+72.29

S.E. 1/4, SEC 10, T.4S., R.7W., 4TH P.M.



PLAN	DATE

BM *102 - FOUND CHSLD "□" ON SOUTH WESTERLY WW (PAINTED BM 100) S.N. 075-0139, 0.2 MI N. OF JCT IL 57/IL 96 STA 1327+12.7, 21.0' LT, EL = 511.57

BM *103 - FOUND CHSLD "□" ON N. WESTERLY WW, S.N. 075-0139, 0.2 MILE N. OF JCT IL 57/IL 96 STA 1327+81.2, 19.4' LT, EL = 512.06

STA 1324+35.00 TO STA 1335+00.00 PR TREE REMOVAL = 1.81 AC
 NOTE: 1) TREE REMOVAL MEASURED FROM ROW LINE TO ROW LINE
 2) SAVE AS MANY TREES AS POSSIBLE

BM *104 - SET CHSLD "□" ON NW COR OF BRIDGE FOR PRIVATE ENTRANCE STA 1330+86.9, 36.0' RT, EL = 518.62

WARREN D. & DAVID M. LAWSON
 PARCEL NO. 6161154



PROFILE	DATE

