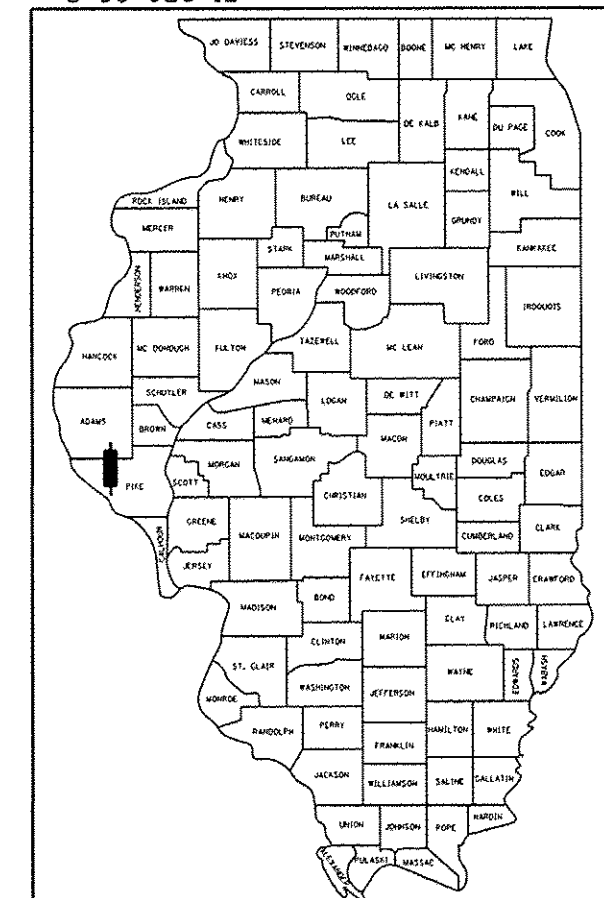


F.A.S. RTE.	SECTION	COUNTY	TOTAL SHEETS	SHEET NO.
1597	14 (W, RS-7)	ADAMS/PIKE	152	1

D-96-026-12



LOCATION OF SECTION INDICATED THUS: -

STATE OF ILLINOIS
DEPARTMENT OF TRANSPORTATION
DIVISION OF HIGHWAYS

SUBMITTED AUGUST 16, 2013
Royce L. Driskell
DEPUTY DIRECTOR OF HIGHWAYS - REGION FOUR ENGINEER

October 4, 2013
John D. Baranowski, PE
ENGINEER OF DESIGN AND ENVIRONMENT

October 4, 2013
Omer Osman, PE
DIRECTOR, DIVISION OF HIGHWAYS

STATE OF ILLINOIS
DEPARTMENT OF TRANSPORTATION
DIVISION OF HIGHWAYS

PLANS FOR PROPOSED FEDERAL AID HIGHWAY

PROJECT ACRS-1597(109)
F.A.S. ROUTE 1597 (IL 96)
SECTION 14 (W, RS-7)
CONTRACT NO 72781
ADAMS / PIKE COUNTY
C-96-026-12

RANGE 7W -4th PM

INDEX OF SHEETS

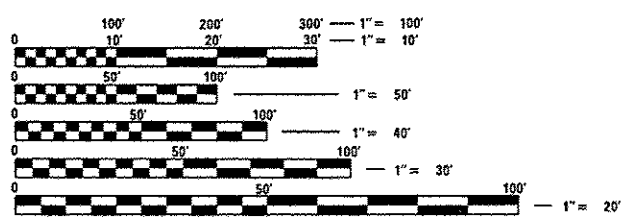
SHEET NO.	DESCRIPTION
1	COVER SHEET
2	GENERAL NOTES AND COMMITMENTS
3 - 12	SUMMARY OF QUANTITIES
13 - 24	SCHEDULE OF QUANTITIES
25 - 28	TYPICAL SECTIONS
29	SUPERELEVATION TRANSITION DETAIL
30	HORIZONTAL CONTROL POINTS
31 - 41	ROADWAY PLAN AND PROFILE
42 - 43	MAINTENANCE OF TRAFFIC - DETOURS
44 - 52	STORM WATER POLLUTION PREVENTION PLANS
53 - 63	CULVERT DETAILS
64	INTERSECTION DETAILS
65 - 68	ENTRANCE DETAILS
69	CONCRETE COLLAR DETAIL
70	GRANULAR BACKFILL DETAIL
71	FIELD TILE REPLACEMENT DETAIL
72	BUTT JOINT DETAIL
73	HEAVY DUTY EROSION CONTROL DETAIL
74	RIPRAP DETAILS
75	ENERGY DISSIPATING BASIN
76 - 147	CROSS SECTIONS - IL 96
148 - 152	CROSS SECTIONS - SIDE ROADS

STANDARDS

000001-06	542501-02	606101-04	701001-02	701336-06
001001-02	601001-04	630001-10	701006-05	720001-01
001006	601101-01	630301-06	701011-04	720006-04
280001-07	602401-03	631031-12	701201-04	780001-04
406201-01	602601-03	635006-03	701301-04	781001-03
442201-03	602701-02	635011-02	701306-03	BLR 21-9
482001-02	604101-01	666001-01	701311-03	BLR 22-7
542301-03			701326-04	

DESIGN DESIGNATIONS

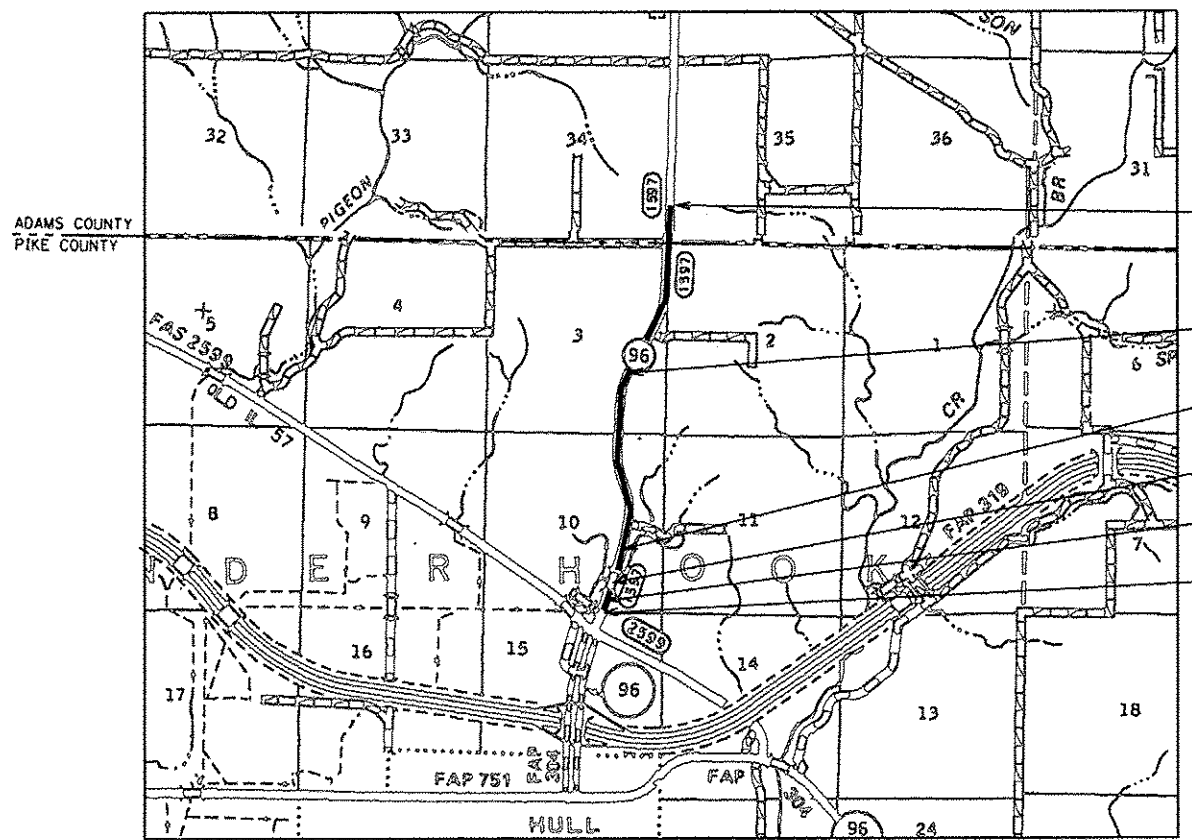
FAS 1597 (IL 96)
725 (2012) PV 89.4%
825 (2014) SU 4.0%
1075 (2022) MU 6.6%



FULL SIZE PLANS HAVE BEEN PREPARED USING STANDARD ENGINEERING SCALES, REDUCED SIZED PLANS WILL NOT CONFORM TO STANDARD SCALES, IN MAKING MEASUREMENTS ON REDUCED PLANS, THE ABOVE SCALES MAY BE USED.

J.U.L.I.E.
JOINT UTILITY LOCATION INFORMATION FOR EXCAVATION
1-800-892-0123

CONTRACT NO. 72781



TWP. 3S

TWP. 4S

END SECTION
STA 1436+65.00

STA. EQUATION
1376+87.15 BK = 1376+84.50 AH

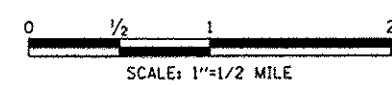
STA. EQUATION
1329+72.29 BK = 1324+34.67 AH

BRIDGE OMISSION
STA 1327+11.75 TO 1327+81.95

STA. EQUATION
986+00.00 BK = 1320+76.11 AH

BEGIN SECTION
STA 984+40.00

LOCATION MAP



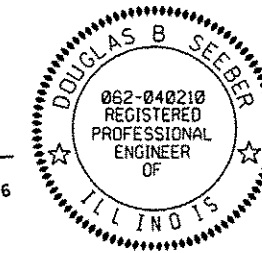
LENGTH OF PROJECT

BEGIN IMPROVEMENTS	STA 984+40.00
END IMPROVEMENTS	STA 1436+65.00
TOTAL LENGTH	12,218.96 FT = 2.314 MILE

PLANS PREPARED BY:

PSBA

POEPPING, STONE, BACH & ASSOCIATES, INC.
100 SOUTH 54TH STREET QUINCY, ILLINOIS 62306
PH: (217) 223-4605 FAX: (217) 223-1546
E-MAIL: PSBA@PSBA.COM WWW.PSBA.COM



Doug B. Seeber 8/16/13
DOUGLAS B. SEEBER DATE
REGISTERED PROFESSIONAL ENGINEER
STATE OF ILLINOIS NO. 62-040210
LICENSE EXPIRES NOVEMBER 30, 2013

SENIOR TEAM ENGINEER: MARK DUST (217) 785-0597
TEAM LEADER: FRANK SHIMKUS (217) 785-9102