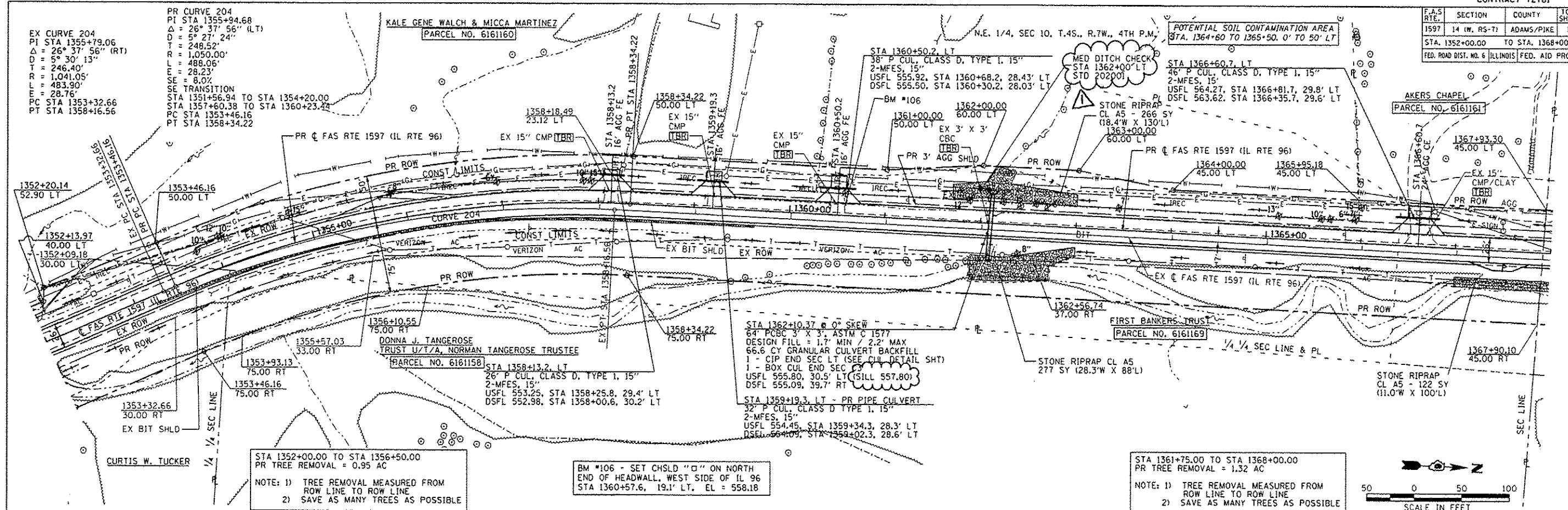


F.A.S. RTE.	SECTION	COUNTY	TOTAL SHEETS	SHEET NO.
1597	14 (W. RS-7)	ADAMS/PIKE	152	34
STA. 1352+00.00 TO STA. 1368+00.00				
FED. ROAD DIST. NO. 6 ILLINOIS FED. AID PROJECT				



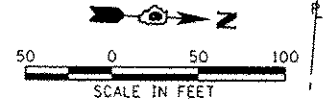
STA 1352+00.00 TO STA 1356+50.00
 PR TREE REMOVAL = 0.95 AC

NOTE: 1) TREE REMOVAL MEASURED FROM ROW LINE TO ROW LINE
 2) SAVE AS MANY TREES AS POSSIBLE

BM *106 - SET CHSLD "□" ON NORTH END OF HEADWALL, WEST SIDE OF IL 96
 STA 1360+57.6, 19.1' LT, EL = 558.18

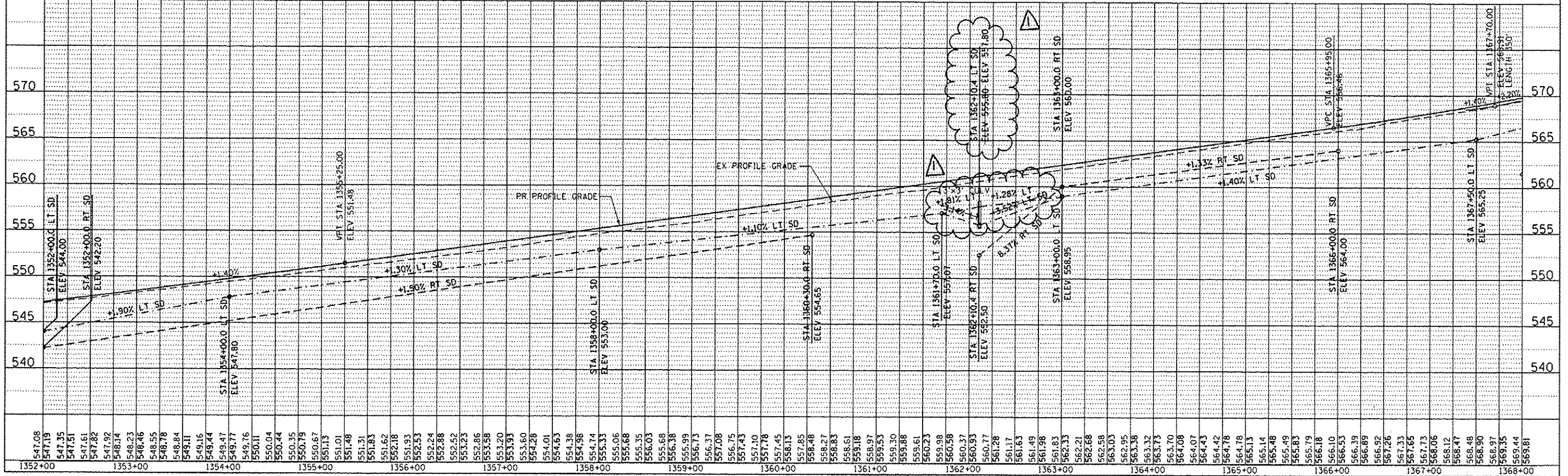
STA 1361+75.00 TO STA 1368+00.00
 PR TREE REMOVAL = 1.32 AC

NOTE: 1) TREE REMOVAL MEASURED FROM ROW LINE TO ROW LINE
 2) SAVE AS MANY TREES AS POSSIBLE



DATE	BY	REVISION

DATE	BY	REVISION



F.A.S. RTE.	SECTION	COUNTY	TOTAL SHEETS	SHEET NO.
1597	14 (W, RS-7)	ADAMS/PIKE	152	36
STA. 1384+00.00 TO STA. 1400+00.00				
FED. ROAD DIST. NO. 6 ILLINOIS FED. AID PROJECT				

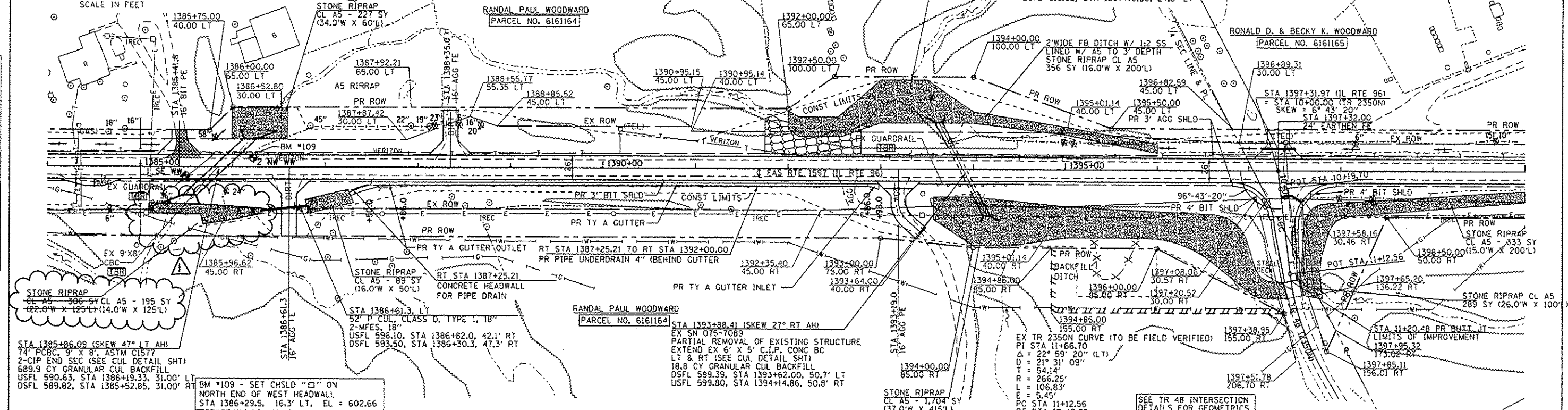
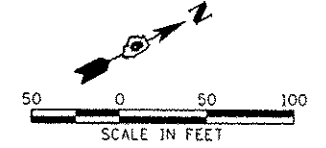
STA 1389+00.00 TO STA 1397+38.95
PR TREE REMOVAL = 2.63 AC

NOTE: 1) TREE REMOVAL MEASURED FROM ROW LINE TO ROW LINE
2) SAVE AS MANY TREES AS POSSIBLE

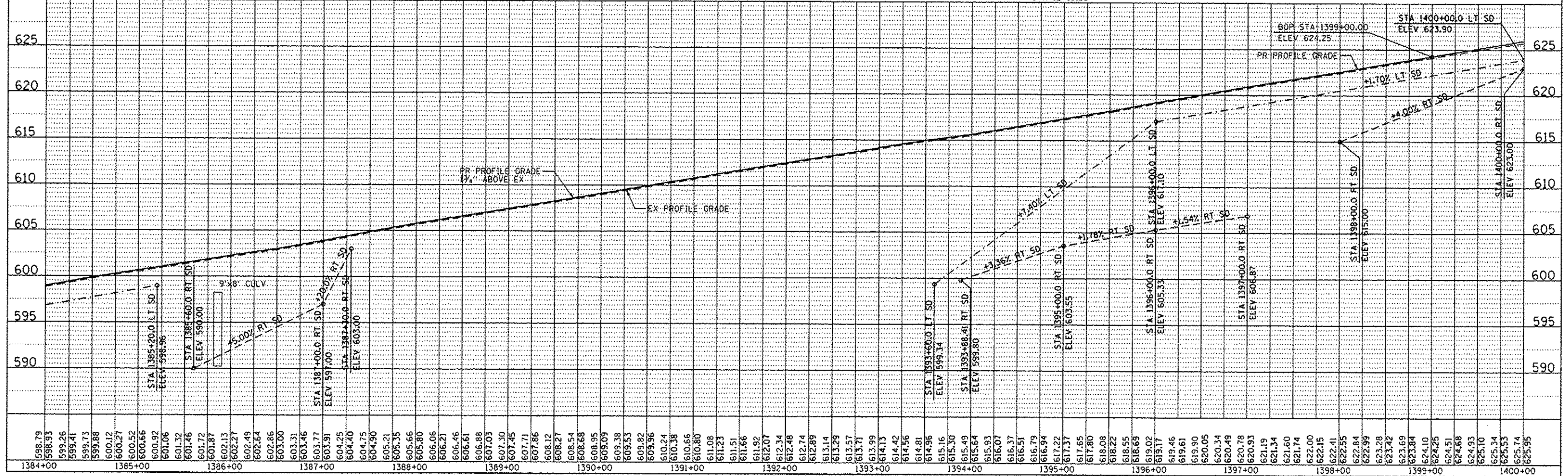
S.E. 1/4, SEC 3, T.4S., R.7W., 4TH P.M.

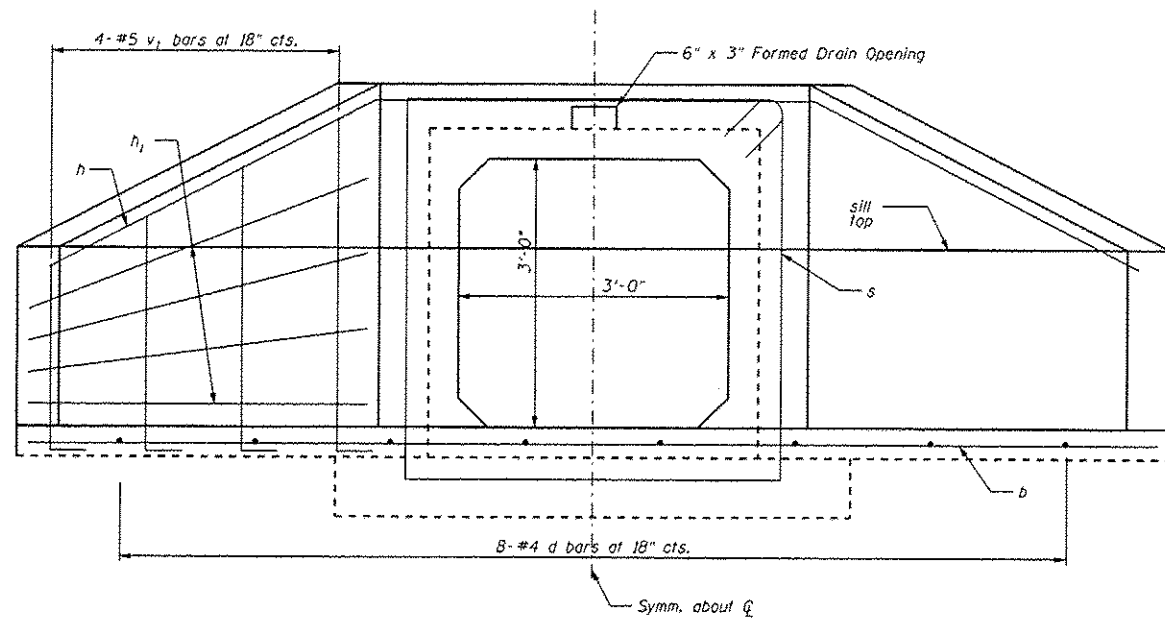
STONE RIPRAP CL 44
120 SY (32.4'W X 200'L)

N.E. 1/4, SEC 3, T.4S., R.7W., 4TH P.M.

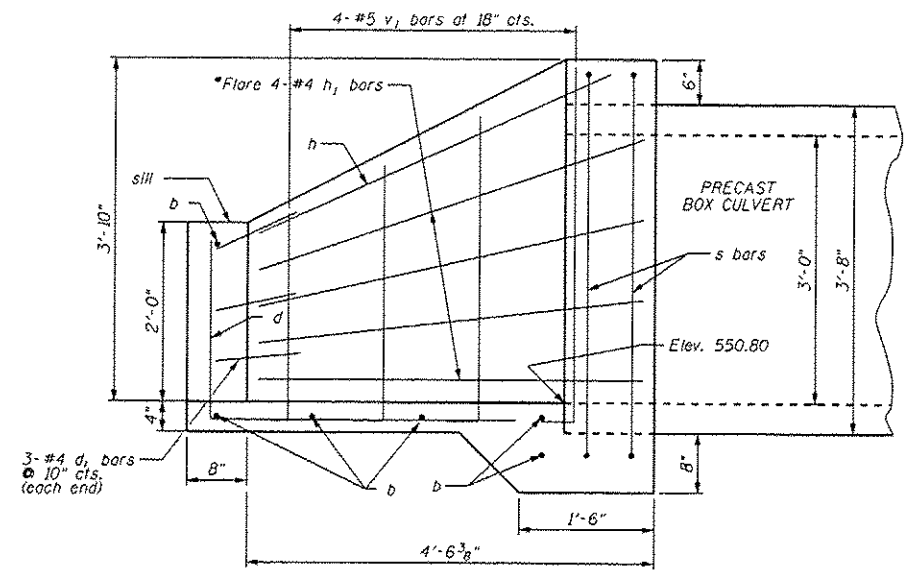


PROFILE	DATE





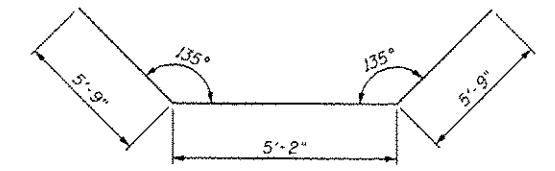
END ELEVATION
(Sill reinforcement not shown)



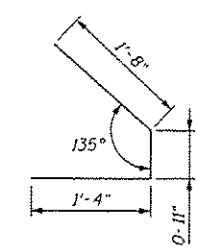
HALF LONG. SECTION

BILL OF MATERIAL

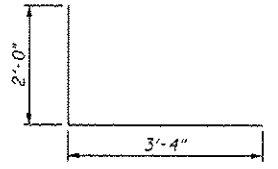
Bar	No.	Size	Length	Shape
b	6	4	12'-6"	—
d	8	4	5'-4"	—
d1	6	4	3'-9"	—
h	1	4	16'-8"	—
h1	8	4	5'-0"	—
s	2	4	17'-10"	—
v1	8	5	5'-1"	—
Concrete Box Culverts			Cu. Yd.	2.5
Reinforcement Bars			Pound	200



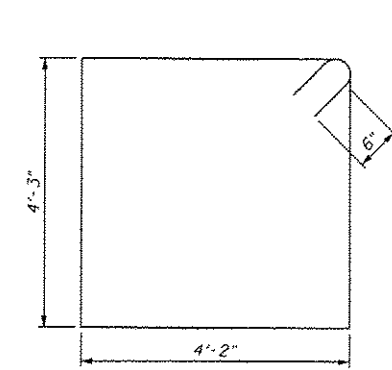
h BAR



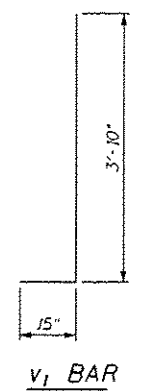
d1 BAR



d BAR

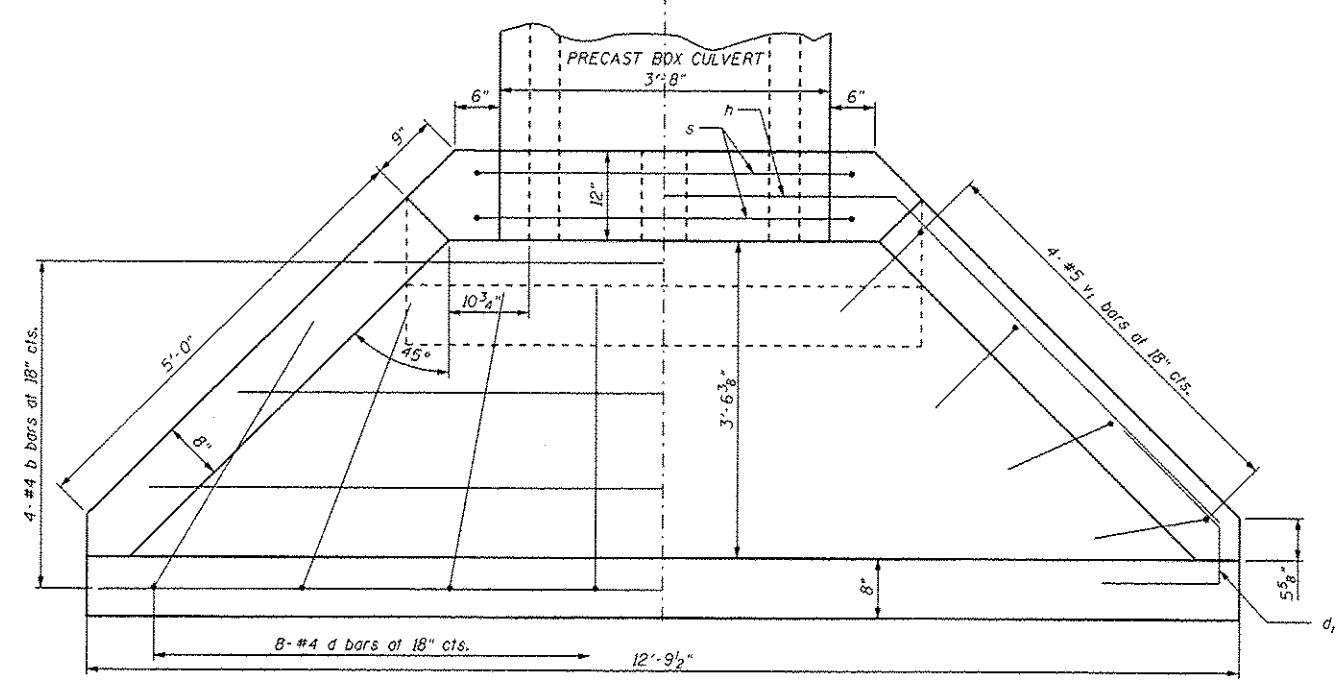


s BAR



v1 BAR

BAR BEND DETAILS



END PLAN

DESIGN STRESSES

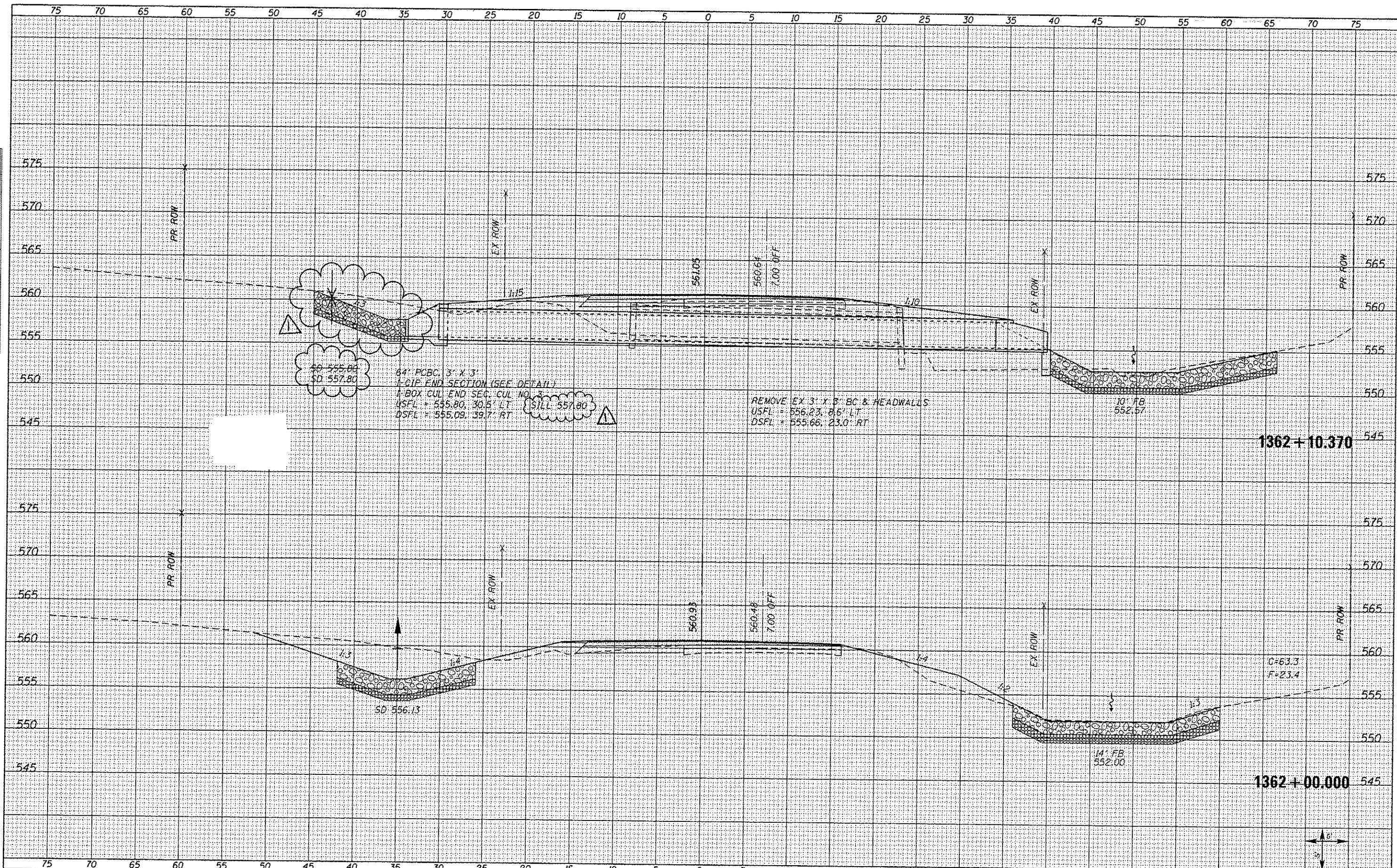
Fy = 60,000 psi
F'c = 3,500 psi

LOADING HL-93

FILE NAME = culvert1362+1037-CIP_ENDS.dgn	USER NAME = notel	DESIGNED - TCD	REVISED -	STATE OF ILLINOIS DEPARTMENT OF TRANSPORTATION	CULVERT DETAILS CAST-IN-PLACE END SECTION: STA 1362+10.37, LT		F.A.S. RTE. 1597	SECTION 14 (W, RS-7)	COUNTY ADAMS/PIKE	TOTAL SHEETS 192	SHEET NO. 57	
PLOT SCALE = 2:0.5824 1" = 10'	CHECKED - CSB	DATE - 07/2013	REVISED -		SCALE: NTS	SHEET 1 OF 1 SHEETS	STA. TO STA.	ILLINOIS FED. AID PROJECT				
PLOT DATE = 1/31/2014	DATE - 07/2013	REVISED -	REVISED -		REVISED SHEET 2-18-14							

DATE	
BY	
FINAL SURVEY	
SUPPLEMENTED	
NOTE BOOK	
AREAS CHECKED	

DATE	
BY	
ORIGINAL SURVEY	
SUPPLEMENTED	
NOTE BOOK	
AREAS CHECKED	

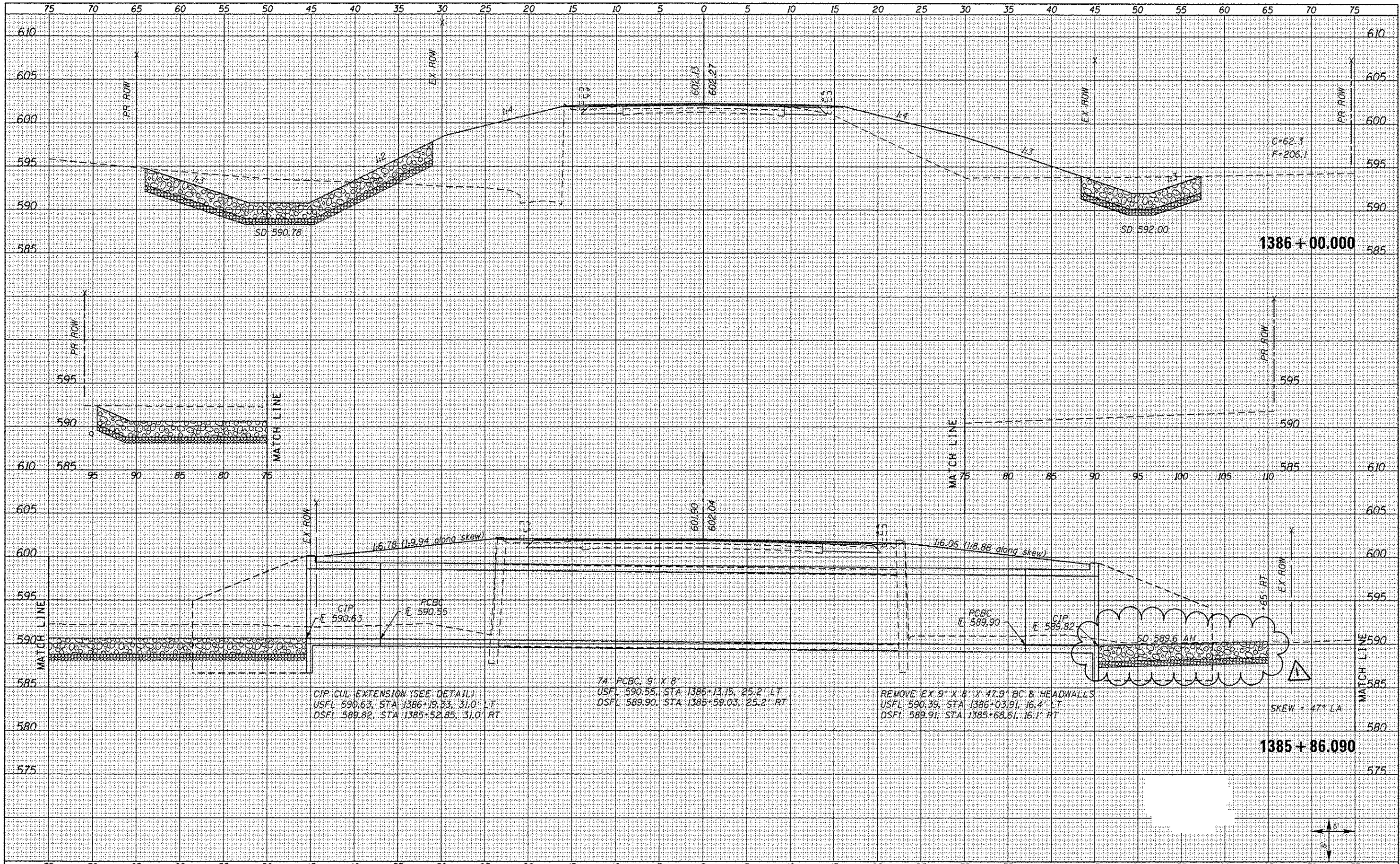


FILE NAME = XS_SHEETS-NEW.dgn	USER NAME = nase1	DESIGNED -	REVISED -	STATE OF ILLINOIS DEPARTMENT OF TRANSPORTATION	FAS 1597 (IL 96) CROSS SECTIONS	F.A.S. RTE.	SECTION	COUNTY	TOTAL SHEETS	SHEET NO.	
		DRAWN -	REVISED -			1597	14 (W, RS-7)	ADAMS/PIKE	152	106	
PLOT SCALE = 10,0000' / in.		CHECKED -	REVISED -			CONTRACT NO. 72781		ILLINOIS FED. AID PROJECT			
PLOT DATE = 1/30/2014		DATE -	REVISED -			SCALE: SHOWN	SHEET NO. 31 OF 72 SHEETS	STA. 1362+00.000	STA. 1362+10.370		

2-18-14

DATE	
BY	
REVISIONS	
NO.	
DATE	
BY	
REVISIONS	
NO.	
DATE	
BY	
REVISIONS	
NO.	
DATE	
BY	
REVISIONS	
NO.	

DATE	
BY	
REVISIONS	
NO.	
DATE	
BY	
REVISIONS	
NO.	
DATE	
BY	
REVISIONS	
NO.	
DATE	
BY	
REVISIONS	
NO.	



FILE NAME: KS.SHEETS-NEW.dgn
 USER NAME: natal
 PLOT SCALE: 1/8" = 10.0000' / 1"
 PLOT DATE: 1/30/2014

DESIGNED	-	REVISED	-
DRAWN	-	REVISED	-
CHECKED	-	REVISED	-
DATE	-	REVISED	-

**STATE OF ILLINOIS
 DEPARTMENT OF TRANSPORTATION**

**FAS 1597 (IL 96)
 CROSS SECTIONS**

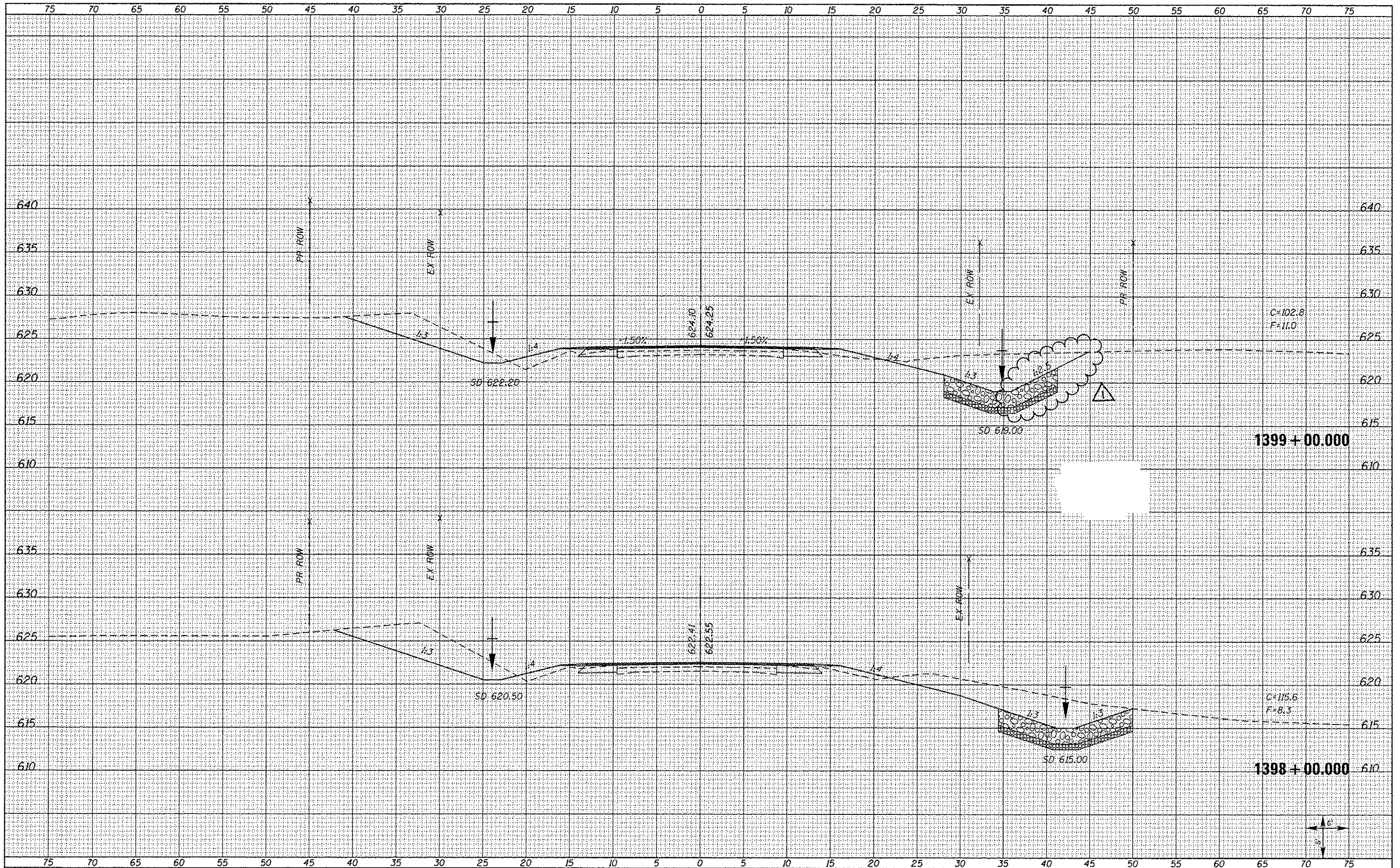
SCALE: SHOWN SHEET NO. 45 OF 72 SHEETS STA. 1385+86.090 STA. 1386+00.000

F.A.S. RTE.	SECTION	COUNTY	TOTAL SHEETS	SHEET NO.
1597	14 (W, RS-7)	ADAMS/PIKE	152	120
CONTRACT NO. 72781			ILLINOIS FED. AID PROJECT	

2-18-14

DATE _____
 BY _____
 CHECKED _____
 DESIGNED _____
 DRAWN _____
 PLOT DATE _____

DATE _____
 BY _____
 CHECKED _____
 DESIGNED _____
 DRAWN _____
 PLOT DATE _____



FILE NAME : XS.SHEETS-NEW.dgn
 USER NAME : notal
 PLOT SCALE : 10.0000' / in.
 PLOT DATE : 1/30/2014

DESIGNED -	REVISOR -
DRAWN -	REVISOR -
CHECKED -	REVISOR -
DATE -	REVISOR -

STATE OF ILLINOIS
 DEPARTMENT OF TRANSPORTATION

FAS 1597 (IL 96)
 CROSS SECTIONS

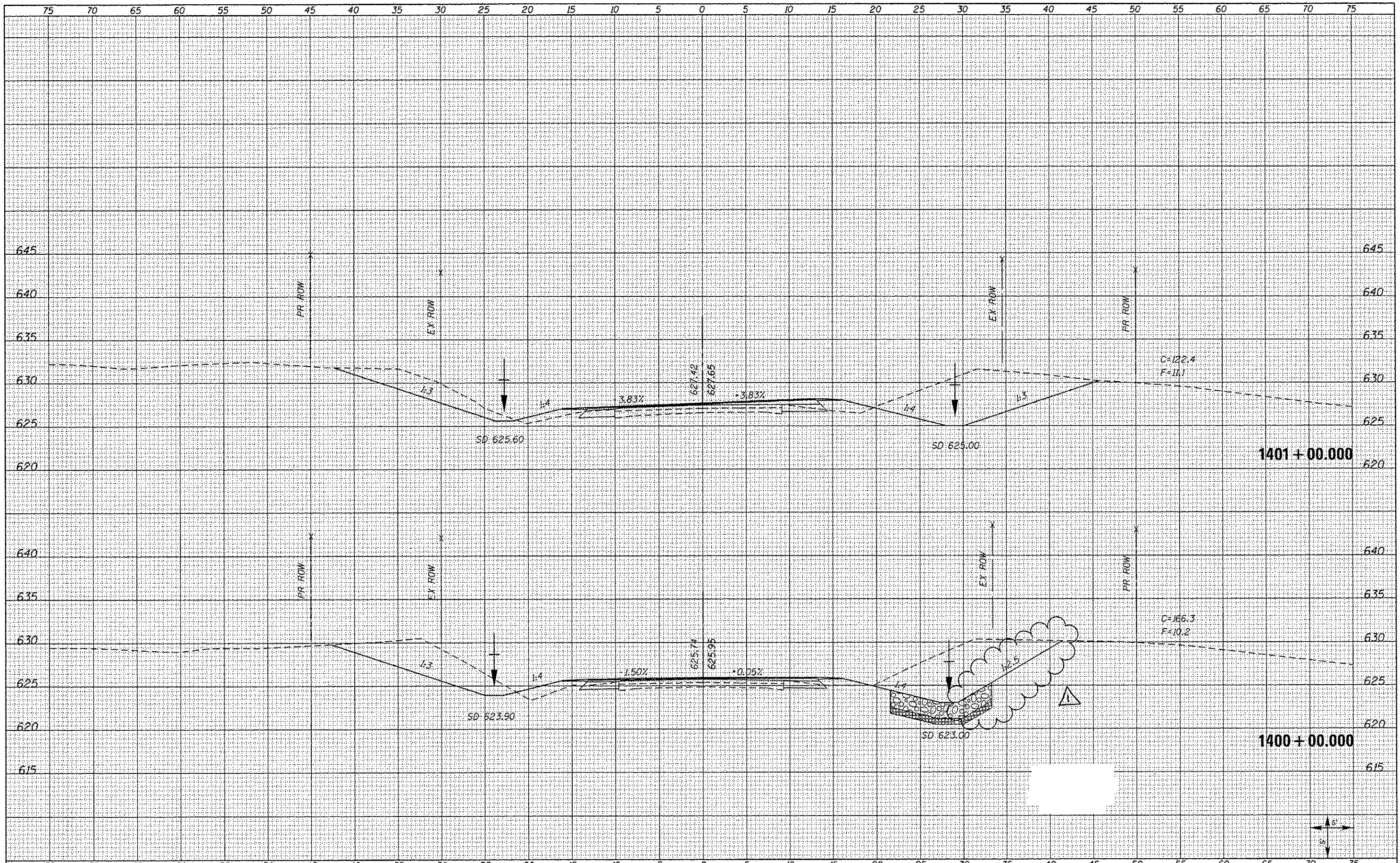
SCALE: SHOWN SHEET NO. 54 OF 72 SHEETS STA. 1398+00.000 STA. 1399+00.000

F.A.S. RTE. 1597	SECTION 14 (W, RS-7)	COUNTY ADAMS/PIKE	TOTAL SHEETS 152	SHEET NO. 129
CONTRACT NO. 72781			ILLINOIS FED. AID PROJECT	

2-10-14

DATE	BY
SURVEYED	
PLOTTED	
NOTE BOOK	
TEMP. AREAS	
CHECKED	
NO.	

DATE	BY
SURVEYED	
PLOTTED	
NOTE BOOK	
TEMP. AREAS	
CHECKED	
NO.	



FILE NAME : XS.SHEETS-NEW.dgn

USER NAME : notal	DESIGNED -	REVISED -
	DRAWN -	REVISED -
PLOT SCALE = 10.0000 "/>	CHECKED -	REVISED -
PLOT DATE = 1/20/2014	DATE -	REVISED -

**STATE OF ILLINOIS
DEPARTMENT OF TRANSPORTATION**

**FAS 1597 (IL 96)
CROSS SECTIONS**

SCALE: SHOWN SHEET NO. 55 OF 72 SHEETS STA. 1400+00.000 STA. 1401+00.000

F.A.S. RTE. 1597	SECTION 14 (W, RS-7)	COUNTY ADAMS/PIKE	TOTAL SHEETS 152	SHEET NO. 130
CONTRACT NO. 72781			ILLINOIS FED. AID PROJECT	

2-18-14