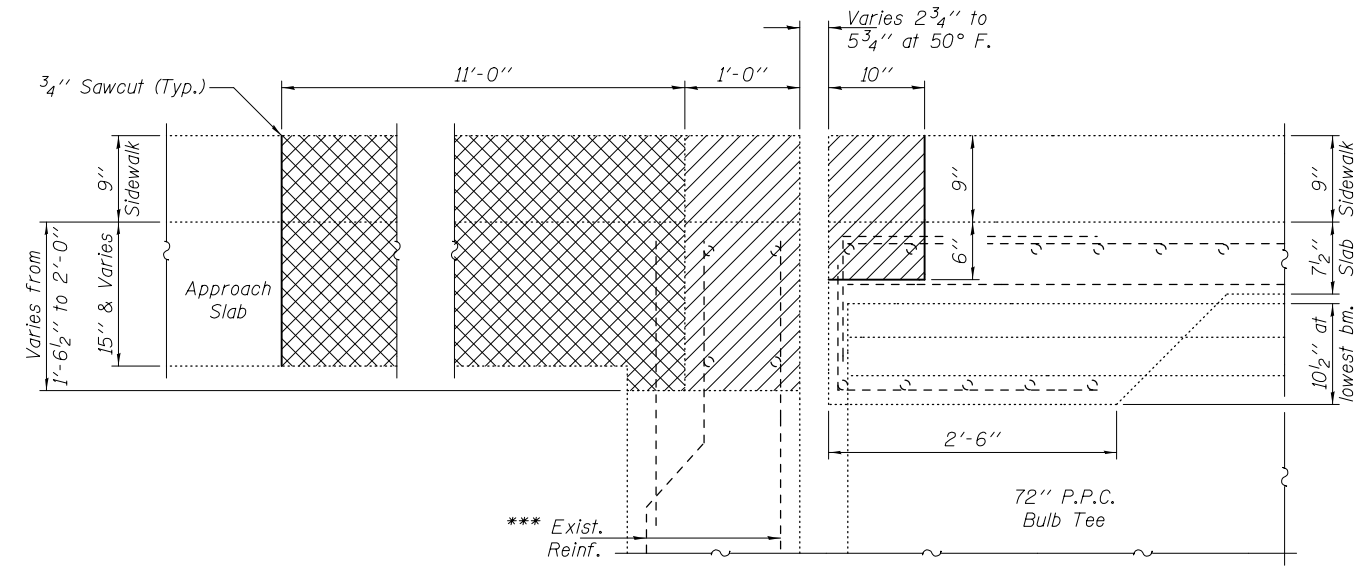
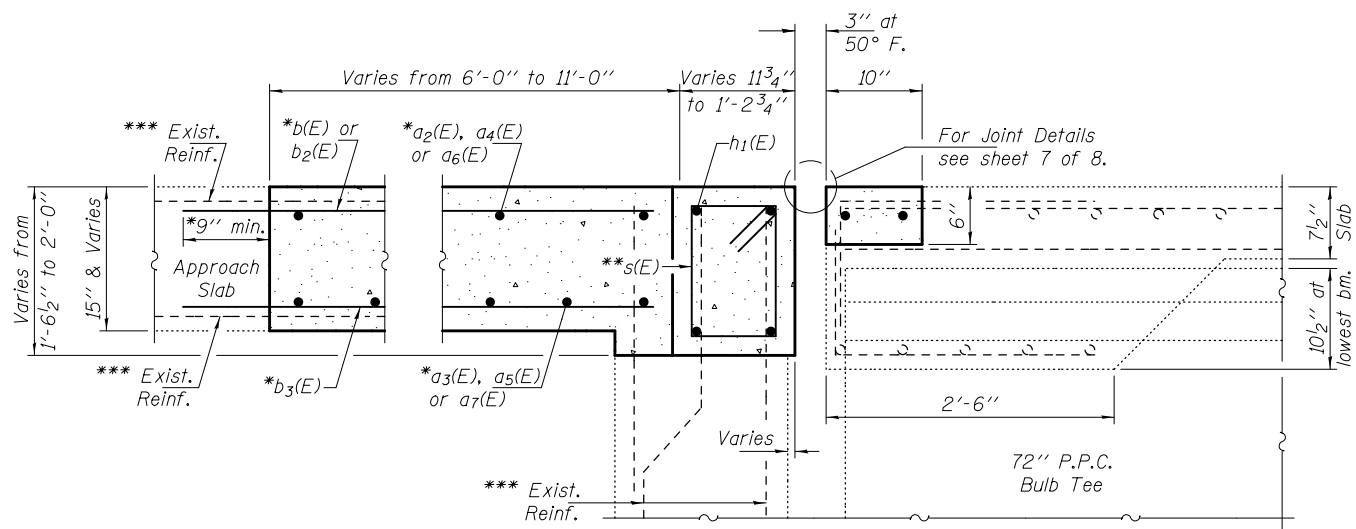


SECTION C-C

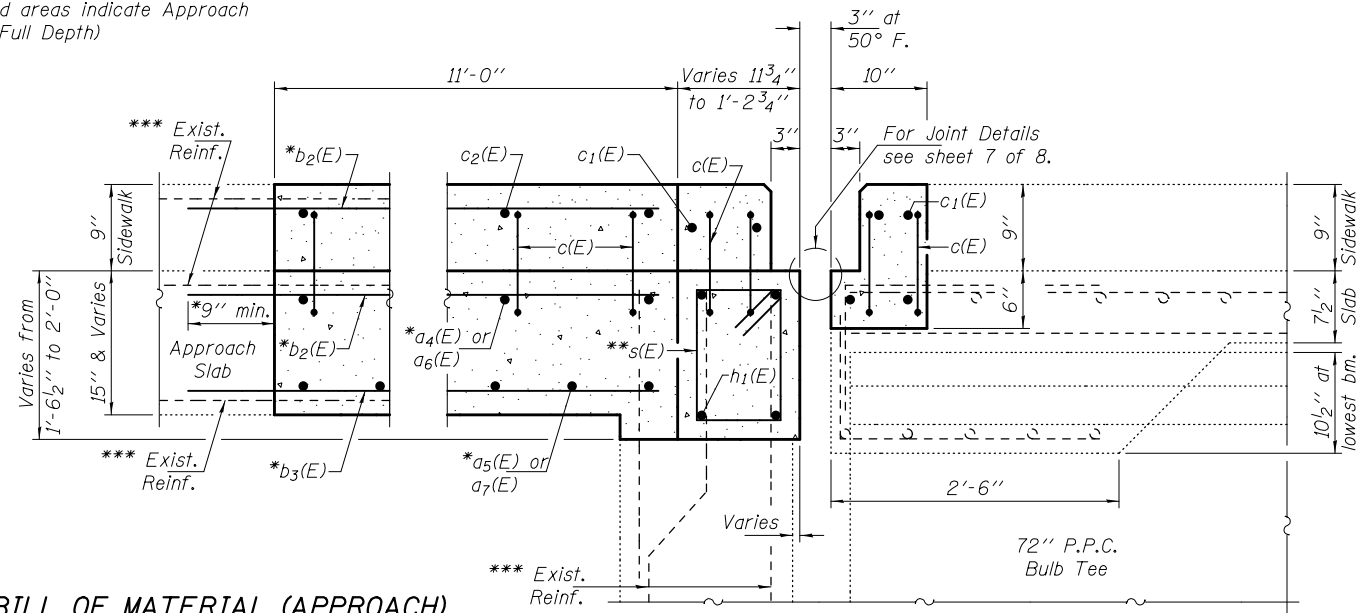


SECTION D-D

- Hatched areas indicate Concrete Removal
 - Cross-Hatched areas indicate Approach Slab Repair (Full Depth)



SECTION G-G

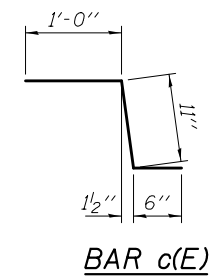


SECTION H-H

***** BILL OF MATERIAL (APPROACH)

Bar	No.	Size	Length	Shape
a ₂ (E)	5	#4	23'-7"	—
a ₃ (E)	10	#5	23'-7"	—
a ₄ (E)	5	#4	8'-0"	—
a ₅ (E)	10	#5	8'-0"	—
a ₆ (E)	4	#4	11'-1"	—
a ₇ (E)	7	#5	11'-1"	—
b(E)	21	#5	5'-8"	—
b ₁ (E)	56	#9	5'-8"	—
b ₂ (E)	17	#4	11'-7"	—
b ₃ (E)	13	#5	11'-7"	—
c(E)	11	#5	2'-5"	⌒
c ₂ (E)	11	#5	6'-8"	—
Bar Splicers			Each	15
Reinforcement Bars, Epoxy Coated			Pounds	2070

* Epoxy grout a₆(E), a₇(E), b₂(E) & b₃(E) bars in 9" min. holes according to Article 584 of the Standard Specifications.
 ** Tilt #5 s(E) bars as required to maintain clearance.
 *** Existing reinforcement extending into the removal area shall be cleaned, straightened and incorporated into the new construction. Any reinforcement bars that are damaged during concrete removal shall be replaced with an approved bar splicer or anchorage system. Cost shall be included with Concrete Removal.
 **** For information only. All materials required for approach slab are included with Approach Slab Repair (Full Depth).



BAR c(E)