

02-28-14 LETTING ITEM 080

STATE OF ILLINOIS  
DEPARTMENT OF TRANSPORTATION  
DIVISION OF HIGHWAYS

**PROPOSED  
HIGHWAY PLANS**

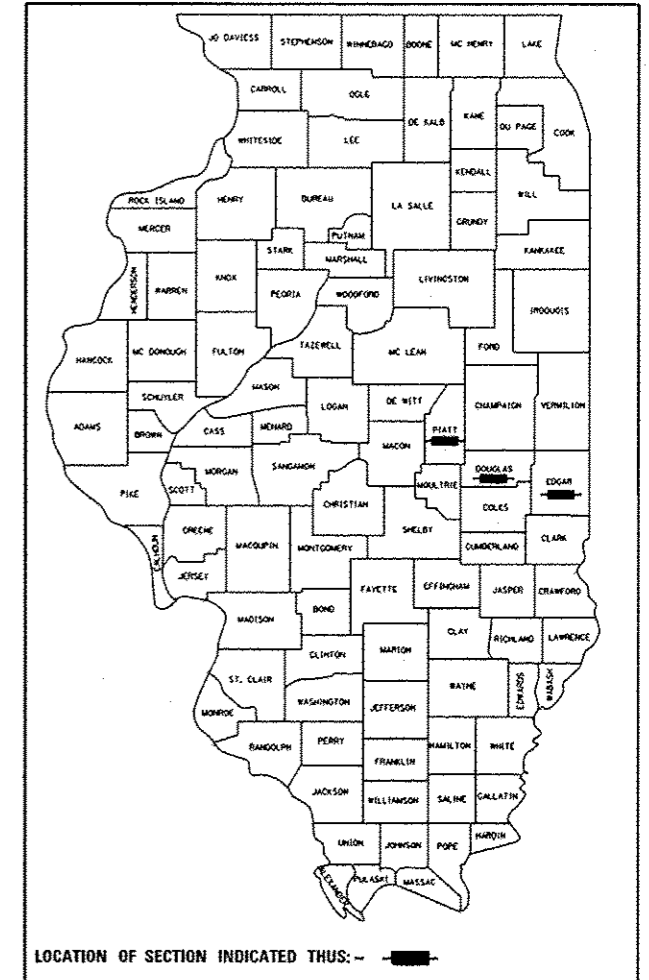
VARIOUS ROUTES  
SECTION FY2014 BRIDGE DECK SEALING  
VARIOUS DISTRICT WIDE BRIDGE DECK SEALING  
DOUGLAS, EDGAR, & PIATT COUNTIES

C-95-029-12

F.A.I. RTE.	SECTION	COUNTY	TOTAL SHEETS	SHEET NO.
VAR	*	**	21	1
		ILLINOIS	CONTRACT NO. 70918	

\*FY2014 BRIDGE DECK SEALING  
\*\*DOUGLAS, EDGAR, & PIATT COUNTIES

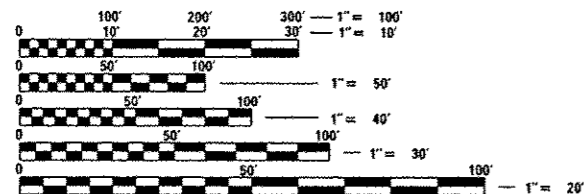
D-95-029-12



FOR INDEX OF SHEETS, SEE SHEET NO. 6  
FOR SUMMARY OF QUANTITIES, SEE SHEET NO. 8

<b>CURRENT ADT</b>	
I-57	
HIGHEST LOCATION SHOWN	
2012 ADT =	19,400
2022 ADT =	22,100
PU + PC =	67.5%
SU =	3.9%
MU =	28.6%

<b>DESIGN DESIGNATION</b>
N. A.



FULL SIZE PLANS HAVE BEEN PREPARED USING STANDARD ENGINEERING SCALES. REDUCED SIZED PLANS WILL NOT CONFORM TO STANDARD SCALES. IN MAKING MEASUREMENTS ON REDUCED PLANS, THE ABOVE SCALES MAY BE USED.

J.U.L.I.E.  
JOINT UTILITY LOCATION INFORMATION FOR EXCAVATION  
1-800-892-0123  
OR 811

PROJECT ENGINEER: TIM BRANDENBURG  
PROJECT DESIGNER: DAVID JAYME  
(217)465-4181

CONTRACT NO. 70918

FOR LOCATION MAPS,  
SEE SHEET NO. 2, SHEET NO. 3, SHEET NO. 4,  
& SHEET NO. 5

STATE OF ILLINOIS  
DEPARTMENT OF TRANSPORTATION  
DIVISION OF HIGHWAYS

SUBMITTED Nov. 20 2013  
Joseph E. Casare  
DEPUTY DIRECTOR OF HIGHWAYS, REGION ENGINEER *etc*

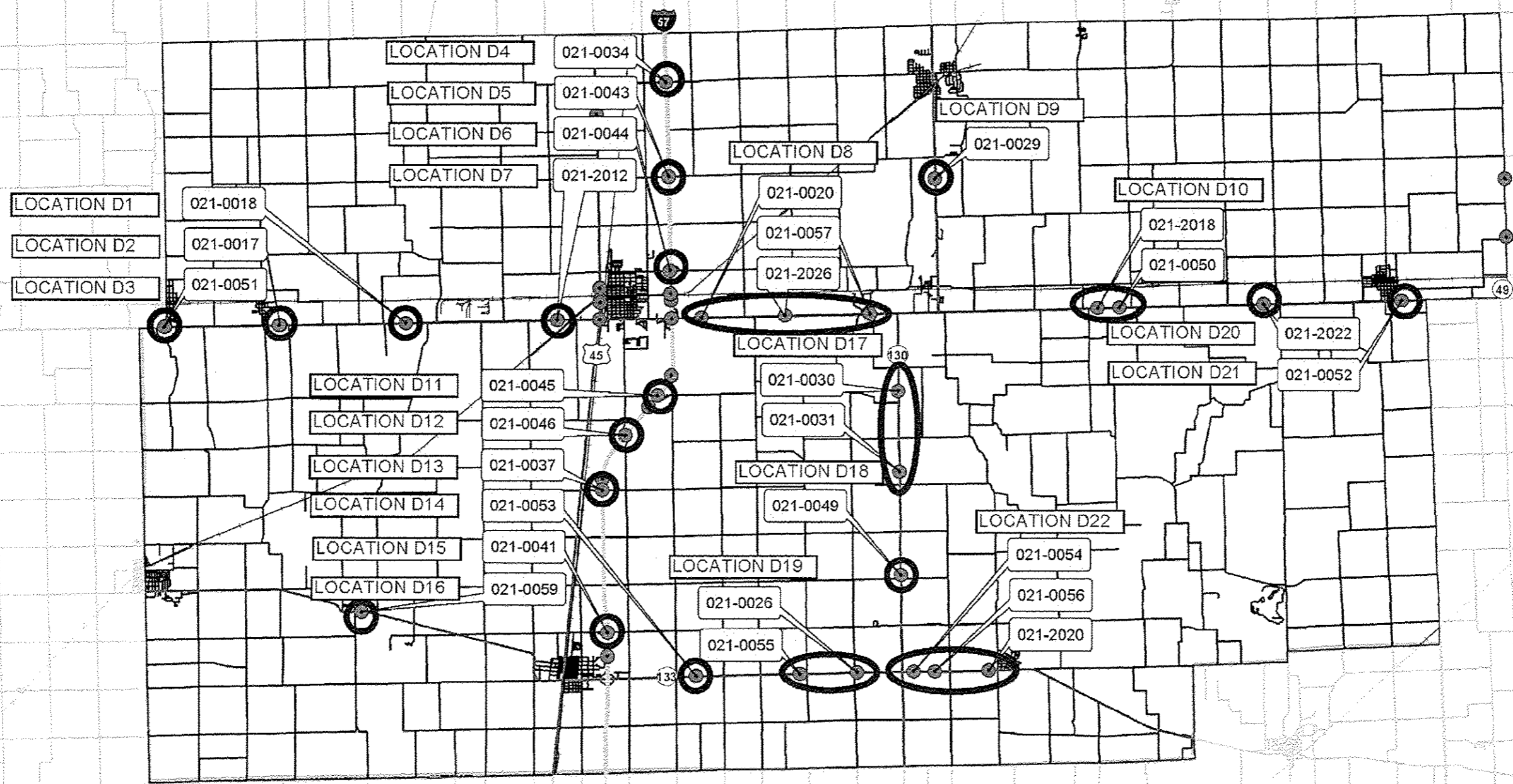
Jan 24 2014  
John D. Baranzelli, PE, Jr  
ENGINEER OF DESIGN AND ENVIRONMENT

Jan 24 2014  
Omer Osman, PE, Jr  
DIRECTOR OF HIGHWAYS, CHIEF ENGINEER

**PRINTED BY THE AUTHORITY  
OF THE STATE OF ILLINOIS**

# CONTRACT 70918; FY14 BRIDGE DECK SEALING

DOUGLAS COUNTY



1:134811



8/24/2012

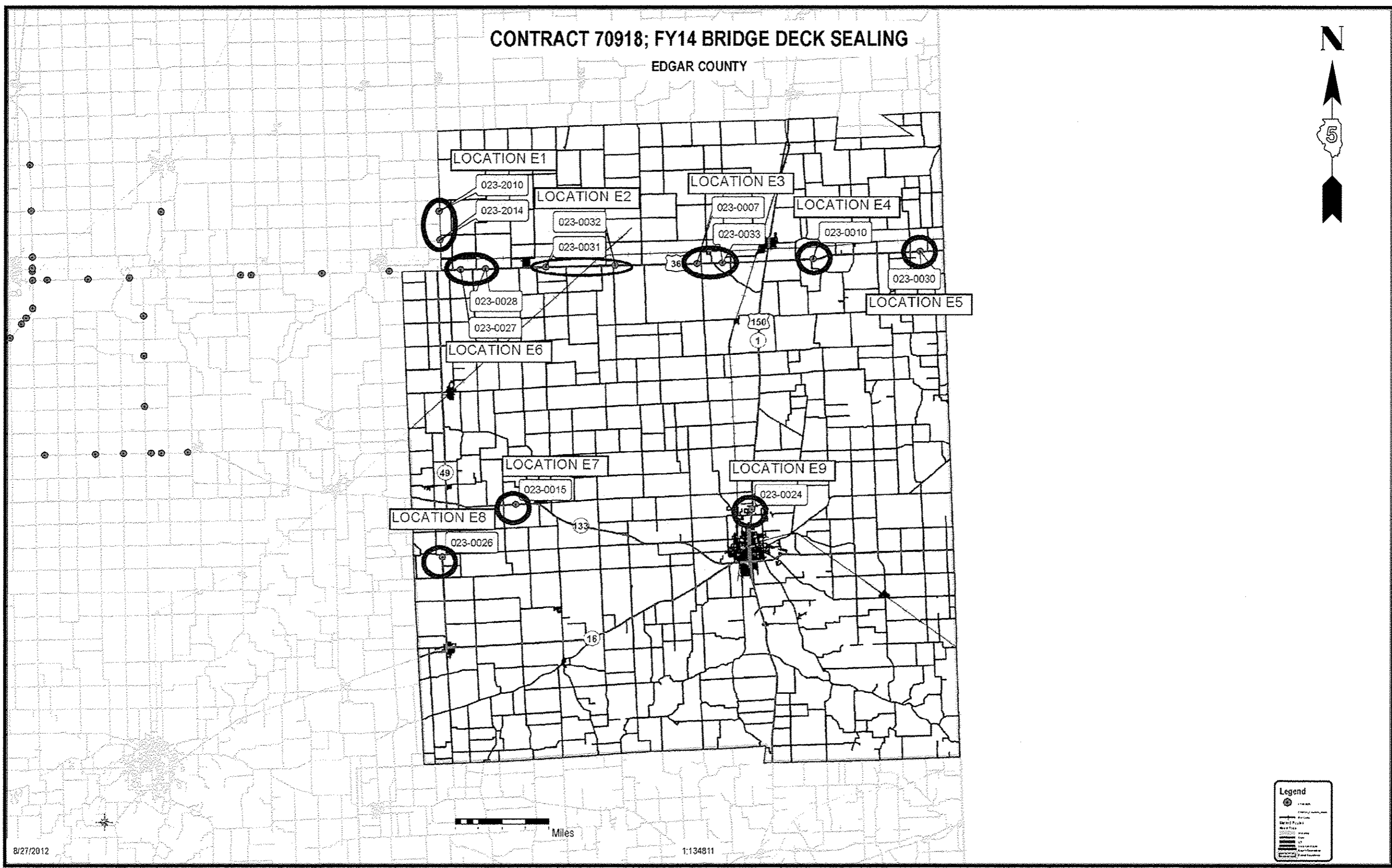
FILE NAME : USER NAME : piersanbr 0918-ah1-cover.dgn PLOT SCALE : 40,0000 1/ in. PLOT DATE : 11/21/2013				DESIGNED - TJB DRAWN - DFJ CHECKED - DATE - 10/11/12				REVISED - REVISED - REVISED - REVISED -				STATE OF ILLINOIS DEPARTMENT OF TRANSPORTATION				LOCATION MAP DOUGLAS COUNTY				F.A.I. RTE. SECTION COUNTY TOTAL SHEETS SHEET NO. VAR . . . . . 21 2	
SCALE: NONE						SHEET NO. 1 OF 2 SHEETS						STA. TO STA.		CONTRACT NO. 70918 ILLINOIS FED. AID PROJECT							

•FY2014 BRIDGE DECK SEALING  
 •DOUGLAS, EDGAR, & PIATT COUNTIES



# CONTRACT 70918; FY14 BRIDGE DECK SEALING

EDGAR COUNTY



**Legend**

- Bridge
- Bridge Deck Sealing Location
- ▭ Section
- ▨ County
- ▧ Total Sheets
- ▩ Sheet No.

B/27/2012

STATE OF ILLINOIS  
DEPARTMENT OF TRANSPORTATION

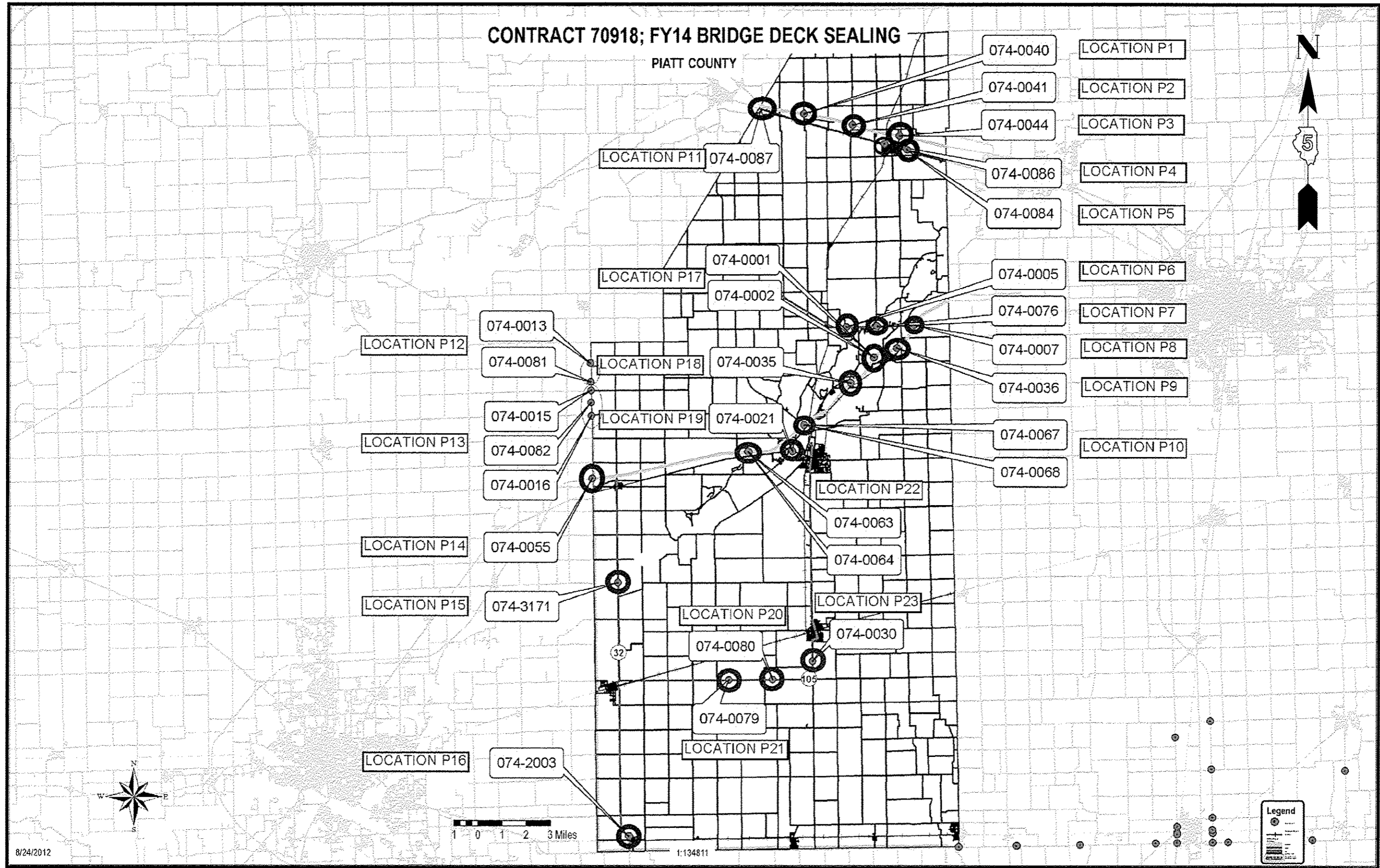
LOCATION MAP  
EDGAR COUNTY

•FY2014 BRIDGE DECK SEALING  
•DOUGLAS, EDGAR, & PIATT COUNTIES

FILE NAME : c:\p\work\p\idot\piersonb\70312248\05	USER NAME : piersonb	DESIGNED - TJB	REVISED -	SCALE: NONE	SHEET NO. 1 OF 1 SHEETS	STA.	TO STA.	F.A.I. RTE.	SECTION	COUNTY	TOTAL SHEETS	SHEET NO.			
		DRAWN - DFJ	REVISED -					VAR							
		CHECKED -	REVISED -												
		DATE - 10/11/12	REVISED -												
								CONTRACT NO. 70918		ILLINOIS FED. AID PROJECT					

# CONTRACT 70918; FY14 BRIDGE DECK SEALING

PIATT COUNTY



8/24/2012

1 0 1 2 3 Miles

1:134811



FILE NAME =	USER NAME = piersonbr	DESIGNED - TJB	REVISED -
or\p...ork\pvidot\piersonbr\d0312248\05	0918-shc-co-er.dgn	DRAWN - DFJ	REVISED -
	PLOT SCALE = 40.0000 ' / in.	CHECKED -	REVISED -
	PLOT DATE = 11/21/2013	DATE - 10/11/12	REVISED -

STATE OF ILLINOIS  
DEPARTMENT OF TRANSPORTATION

LOCATION MAP  
PIATT COUNTY

SCALE: NONE SHEET NO. 1 OF 1 SHEETS STA. TO STA.

*FY2014 BRIDGE DECK SEALING			
**DOUGLAS, EDGAR, & PIATT COUNTIES			
F.A.I. RTE.	SECTION	COUNTY	TOTAL SHEETS NO.
VAR	.	**	21 5
			CONTRACT NO. 70918
[ILLINOIS] FEO. AID PROJECT			

## INDEX OF SHEETS

SHEET NO.	DESCRIPTION
1	COVER SHEET
2-3	LOCATION MAPS - DOUGLAS COUNTY
4	LOCATION MAP - EDGAR COUNTY
5	LOCATION MAP - PIATT COUNTY
6	INDEX OF SHEETS
6	LIST OF HIGHWAY STANDARDS
7	GENERAL NOTES
8	SUMMARY OF QUANTITIES
9-12	TYPICAL APPLICATION SECTIONS
13-14	DOUGLAS COUNTY SCHEDULE OF QUANTITIES - APPLICATION
15-16	DOUGLAS COUNTY TRAFFIC CONTROL & PROTECTION
17	EDGAR COUNTY SCHEDULE OF QUANTITIES - APPLICATION
18	EDGAR COUNTY TRAFFIC CONTROL & PROTECTION
19	PIATT COUNTY SCHEDULE OF QUANTITIES - APPLICATION
20	PIATT COUNTY TRAFFIC CONTROL & PROTECTION
21	TRAFFIC CONTROL AND PROTECTION DEVICES ( ROAD & SIDEROAD/STREET CLOSURES )

## LIST OF HIGHWAY STANDARDS

STANDARD NO.	DESCRIPTION
000001-06	STANDARD SYMBOLS, ABBREVIATIONS AND PATTERNS
001006	DECIMAL OF AN INCH AND OF A FOOT
701201-04	LANE CLOSURE, 2 LANE, 2 WAY, DAY ONLY
701400-07	APPROACH TO LANE CLOSURE, FREEWAY/EXPRESSWAY
701406-08	LANE CLOSURE, FREEWAY/EXPRESSWAY, DAY OPERATIONS ONLY
701411-08	LANE CLOSURE, MULTILANE, AT ENTRANCE OR EXIT RAMP, FOR SPEEDS ≥ 45 MPH
701901-03	TRAFFIC CONTROL DEVICES

•FY2014 BRIDGE DECK SEALING  
••DOUGLAS, EDGAR, & PIATT COUNTIES

FILE NAME : c:\pvc\work\pvidot\piersonb\00312248\05	USER NAME : piersonb 0918-shi-gernote.dgn	DESIGNED - TJB	REVISED -	<b>STATE OF ILLINOIS DEPARTMENT OF TRANSPORTATION</b>	<b>INDEX OF SHEETS, LIST OF HIGHWAY STANDARDS &amp; GENERAL NOTES</b>	F.A.I. RTE.	SECTION	COUNTY	TOTAL SHEETS	SHEET NO.
PLOT SCALE * 40.0000 1/ in.	CHECKED -	DRAWN - DFJ	REVISED -	SCALE: NONE	SHEET NO. 1 OF 2 SHEETS	VAR	-	**	21	6
PLOT DATE * 11/21/2013	DATE - 10/11/12	REVISOR -	REVISED -	STA.	TO STA.	ILLINOIS FED. AID PROJECT CONTRACT NO. 70918				

## GENERAL NOTES

G.N. -100  
 ENGLISH UNITS OF MEASUREMENT SHALL GOVERN OVER AND SUPERSEDE ANY METRIC UNITS SHOWN IN THIS CONTRACT. WHERE INCLUDED, METRIC UNITS ARE FOR INFORMATION ONLY.

G.N. - PAVEMENT MARKINGS AND MARKERS  
 EXISTING PAVEMENT MARKINGS AND RAISED REFLECTIVE PAVEMENT MARKERS SHALL BE TEMPORARILY COVERED PRIOR TO APPLICATION OF THE DECK SURFACE TREATMENT, TO PREVENT THE MATERIAL FROM BEING APPLIED TO THE MARKINGS AND MARKERS. THE TEMPORARY COVERING SHALL BE REMOVED AFTER APPLICATION OF THE DECK SURFACE TREATMENT AND PRIOR TO OPENING TO TRAFFIC. COST IS INCLUDED WITH THE DECK SURFACE TREATMENT SPECIFIED.

NO COMMITMENTS

\*FY2014 BRIDGE DECK SEALING  
 \*\*DOUGLAS, EDGAR, & PIATT COUNTIES

FILE NAME =	USER NAME = pjarsonb	DESIGNED - TJB	REVISED -	<b>STATE OF ILLINOIS DEPARTMENT OF TRANSPORTATION</b>	<b>INDEX OF SHEETS, LIST OF HIGHWAY STANDARDS &amp; GENERAL NOTES</b>			F.A.I. RTE.	SECTION	COUNTY	TOTAL SHEETS	SHEET NO.	
er\p-work\p\dot\pjarsonb\0312248\05	0918-sht-gennote.dgn	DRAWN - DFJ	REVISED -		SCALE: NONE	SHEET NO. 2 OF 2 SHEETS	STA.	TO STA.	VAR	.	**	21	7
	PLOT SCALE = 40.0000 1/ in.	CHECKED -	REVISED -										
	PLOT DATE = 11/21/2013	DATE - 10/11/12	REVISED -										
ILLINOIS FED. AID PROJECT												CONTRACT NO. 70918	

SUMMARY OF QUANTITIES

SECTION: FY 2014 BRIDGE DECK SEALING

DESCRIPTION: BRIDGE PREVENTATIVE MAINTENANCE

MULTI-LANE INTERSTATE (FOUR LANES) AND TWO-LANE TWO-WAY HIGHWAYS

LOCATION OF WORK: DOUGLAS COUNTY (021) EDGAR COUNTY (023) PIATT COUNTY (074)

RURAL URBAN RURAL URBAN RURAL URBAN

FUNDING BREAKOUT: 100% STATE 100% STATE 100% STATE 100% STATE 100% STATE 100% STATE

CONSTRUCTION TYPE CODE: 0044 0044 0044 0044 0044 0044

CODE NO	ITEM	UNIT	TOTAL QUANTITY	QUANTITY	QUANTITY	QUANTITY	QUANTITY	QUANTITY	QUANTITY
X5870015	BRIDGE DECK CONCRETE SEALER	SQ FT	718,901.0	348,920.0	-	49,626.0	14,311.0	213,250.0	92,794.0
67100100	MOBILIZATION	L SUM	1.0	0.5	-	0.1	0.0	0.3	0.1
70100420	TRAFFIC CONTROL AND PROTECTION, STANDARD 701411	EACH	4.0	4.0	-	-	-	-	0.0
70100450	TRAFFIC CONTROL AND PROTECTION, STANDARD 701201	L SUM	1.0	0.5	-	0.2	0.0	0.3	0.0
70100700	TRAFFIC CONTROL AND PROTECTION, STANDARD 701406	L SUM	1.0	0.5	-	-	-	0.3	0.2
X7015005	CHANGEABLE MESSAGE SIGN	CAL DA	60.0	34.0	-	-	-	17.0	9.0

6

NO SPECIALTY ITEMS

•FY2014 BRIDGE DECK SEALING  
•DOUGLAS, EDGAR, & PIATT COUNTIES

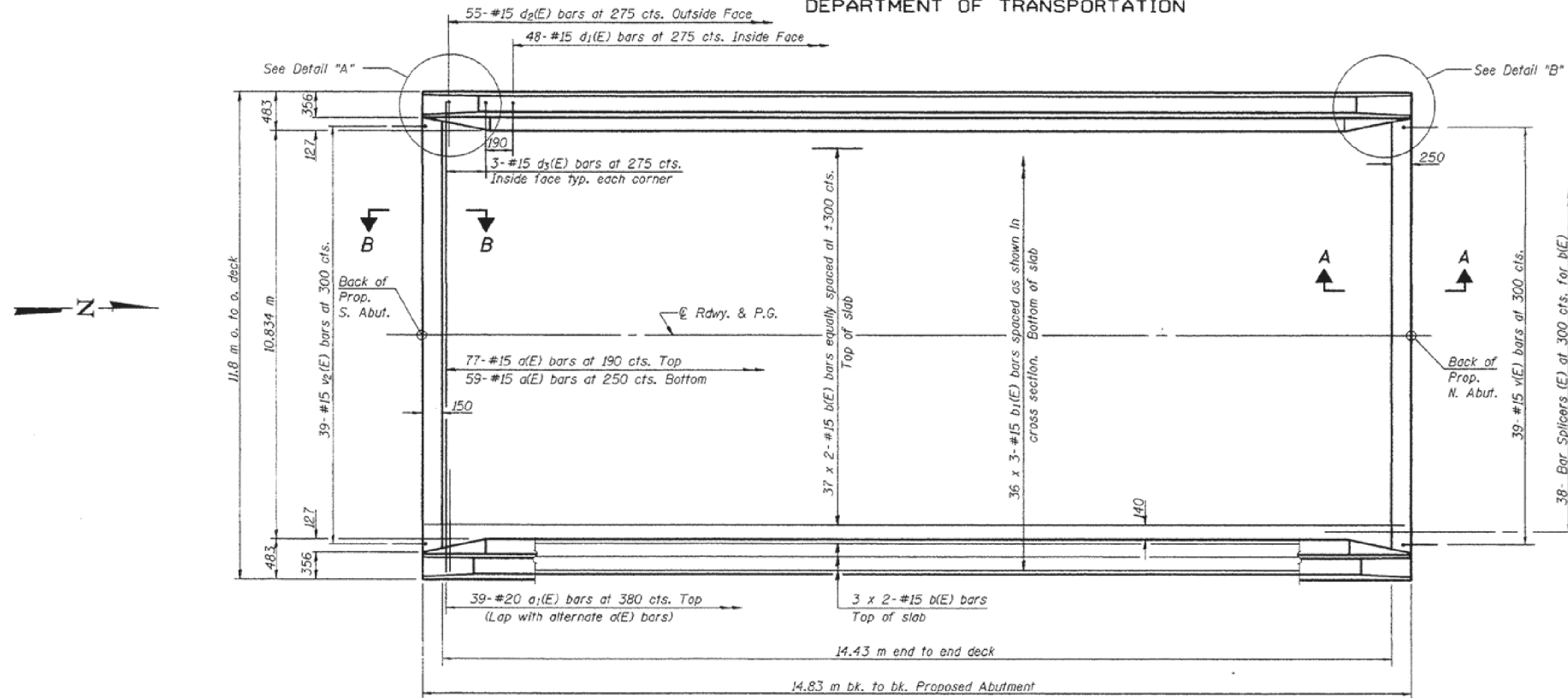
FILE NAME : c:\pwork\pwork\piatt\piatt\0312240\05	USER NAME : piatt 10918-ah1-500.dgn	DESIGNED - TJB DRAWN - DFJ	REVISED - REVISED -	<b>STATE OF ILLINOIS DEPARTMENT OF TRANSPORTATION</b>	<b>SUMMARY OF QUANTITIES</b>			F.A.I. RTE.	SECTION	COUNTY	TOTAL SHEETS	SHEET NO.
PLOT SCALE * 48.0000 / in.	CHECKED -	REVISED -	VAR							21	8	
PLOT DATE * 11/21/2013	DATE - 10/11/12	REVISED -			SCALE: NONE	SHEET NO. 1 OF 1 SHEETS	STA.	TO STA.	CONTRACT NO. 70918			
ILLINOIS FED. AID PROJECT												



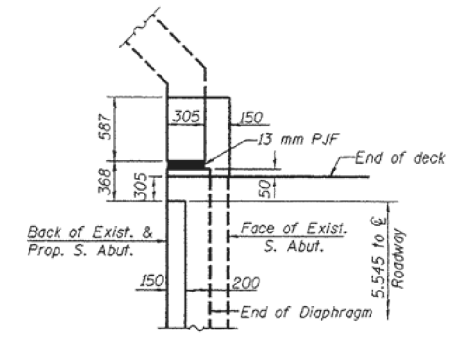
STATE OF ILLINOIS  
DEPARTMENT OF TRANSPORTATION

ROUTE NO.	SECTION	COUNTY	TOTAL SHEETS	SHEET NO.
F.A.S. RTE. 1671	SEC. 22BR-1	DOUGLAS	11	13
PRELIMINARY SHEET NO. 7	SUBPROJECT	FEEDBACK PROJECT		

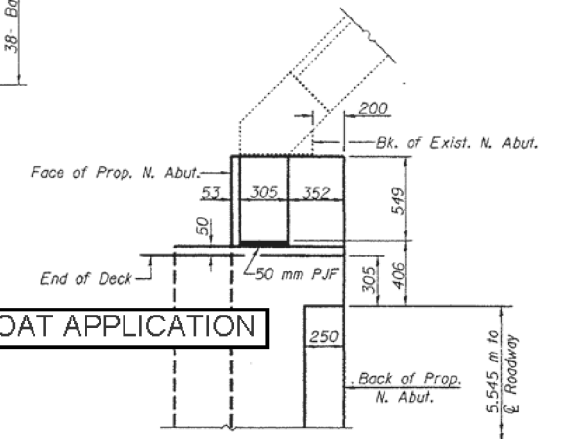
SHEET NO. 3  
13 SHEET  
90948



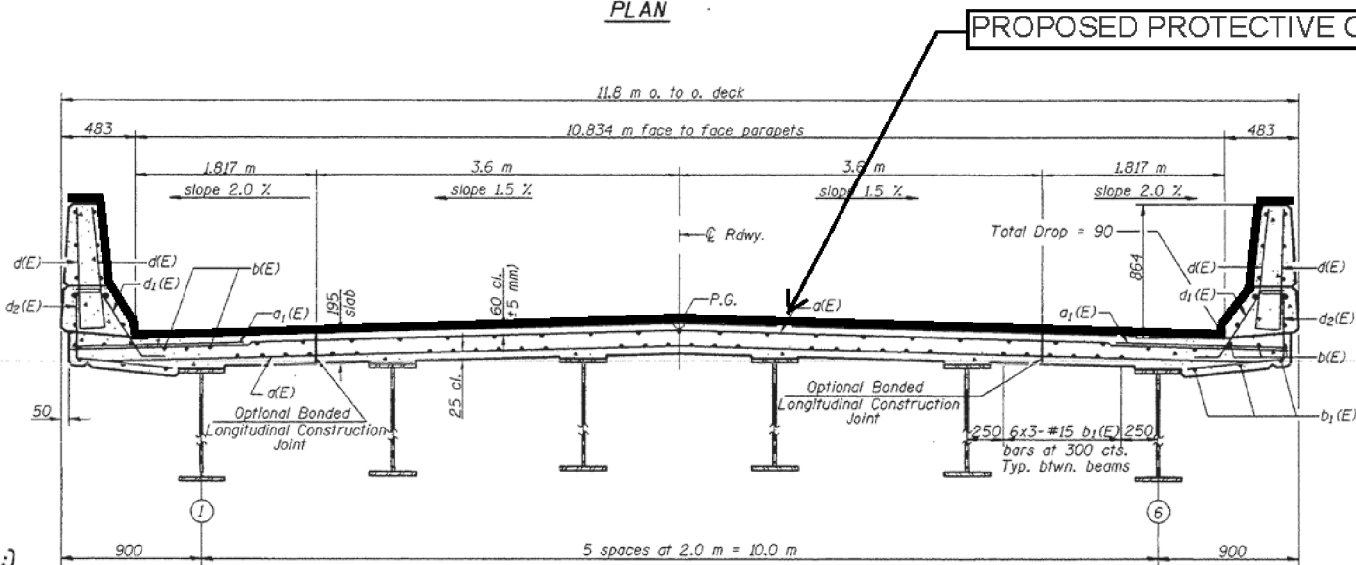
PLAN



DETAIL "A"  
Parapet and Approach not shown.



DETAIL "B"  
Parapet and Approach not shown.



TYPICAL SECTION; TWO-LANE TWO-WAY WITH PARAPET

CROSS SECTION  
(Looking North)

MIN. BAR LAPS  
#15 bars = 640

Notes: See Sheet 4 of 13 for superstructure details and Bill of Material.  
Reinforcement bars designated (E) shall be epoxy coated.  
Bars indicated thus 1 x 3-#15 etc. indicates 1 line of bars with 3 lengths per line.  
See Sheet 4 of 13 for parapet reinforcement.  
All dimensions are in millimeters (mm) except as noted.  
See sheet 12 of 13 for bar splicer details.

**SUPERSTRUCTURE**  
**F.A.S. RTE. 1671 SEC. 22BR-1**  
**DOUGLAS COUNTY**  
**STATION 22+618.644**  
**STRUCTURE NO. 021-0011**

DESIGNED **Jonas H. Patty**  
CHECKED **Mark D. Shaffer**  
DRAWN **R. Sommer**  
CHECKED **J.D.P./M.D.S.**

January 30 2014  
EXAMINED **Thomas J. Donagale**  
PASSED **Ralph E. Anderson**  
ENGINEER OF BRIDGES AND STRUCTURES

FILE NAME =	USER NAME = ppersonbr	DESIGNED - TJB	REVISED -
et:\pw_work\p\pidot\ppersonbr\d0312248\0570918-sh-typical.dgn		DRAWN - DFJ	REVISED -
PLOT SCALE = 40.0000' / in.		CHECKED -	REVISED -
PLOT DATE = 11/21/2013		DATE - 08/15/12	REVISED -

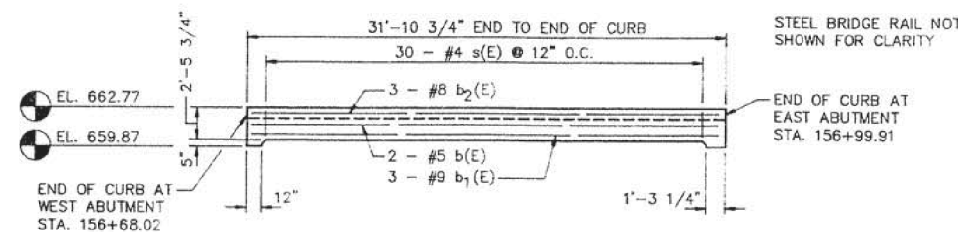
STATE OF ILLINOIS  
DEPARTMENT OF TRANSPORTATION

TYPICAL SECTION; 2 LANE 2 WAY HIGHWAY WITH PARAPET	
SCALE: NONE	SHEET NO. 1 OF 1 SHEETS
STA.	TO STA.

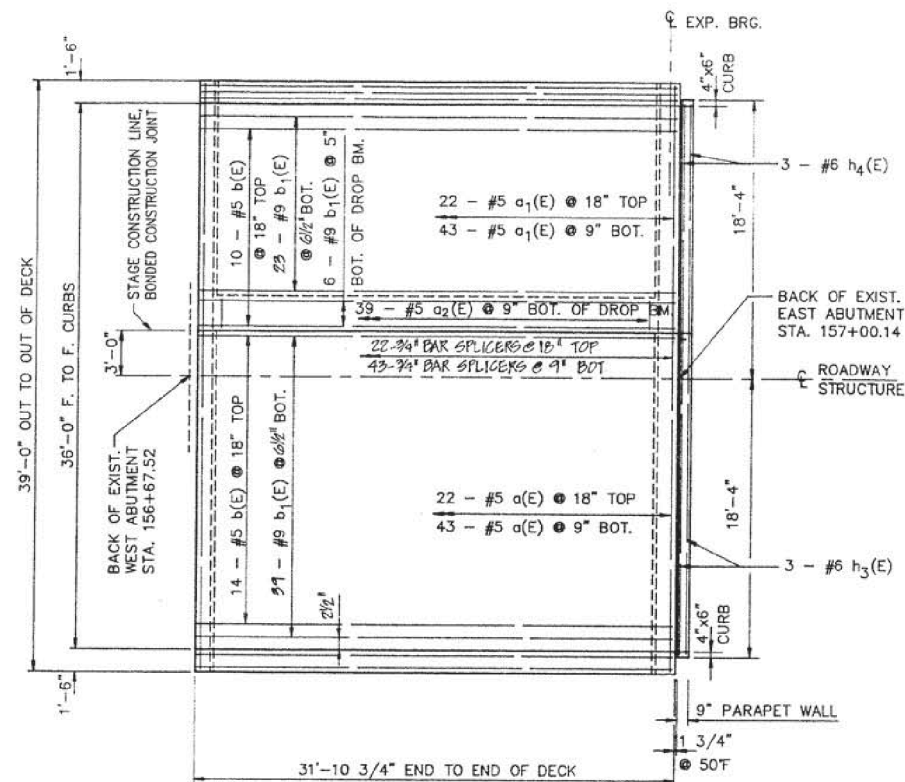
F.A.I. RTE.	SECTION	COUNTY	TOTAL SHEETS	SHEET NO.
VAR	.	**	21	9
CONTRACT NO. 70918				
ILLINOIS FED. AID PROJECT				

•FY2014 BRIDGE DECK SEALING  
•DOUGLAS, EDGAR, & PIATT COUNTIES

F.A.P. RTE.	SECTION	COUNTY	TOTAL SHEETS	SHEET NO.
79	143 BR-3	DOUGLAS	19	13
F.H.W.A. REG.	ILLINOIS	PROJECT		



**ELEVATION OF CURB BEAM**  
(DIMENSIONS • OUTSIDE EDGE)



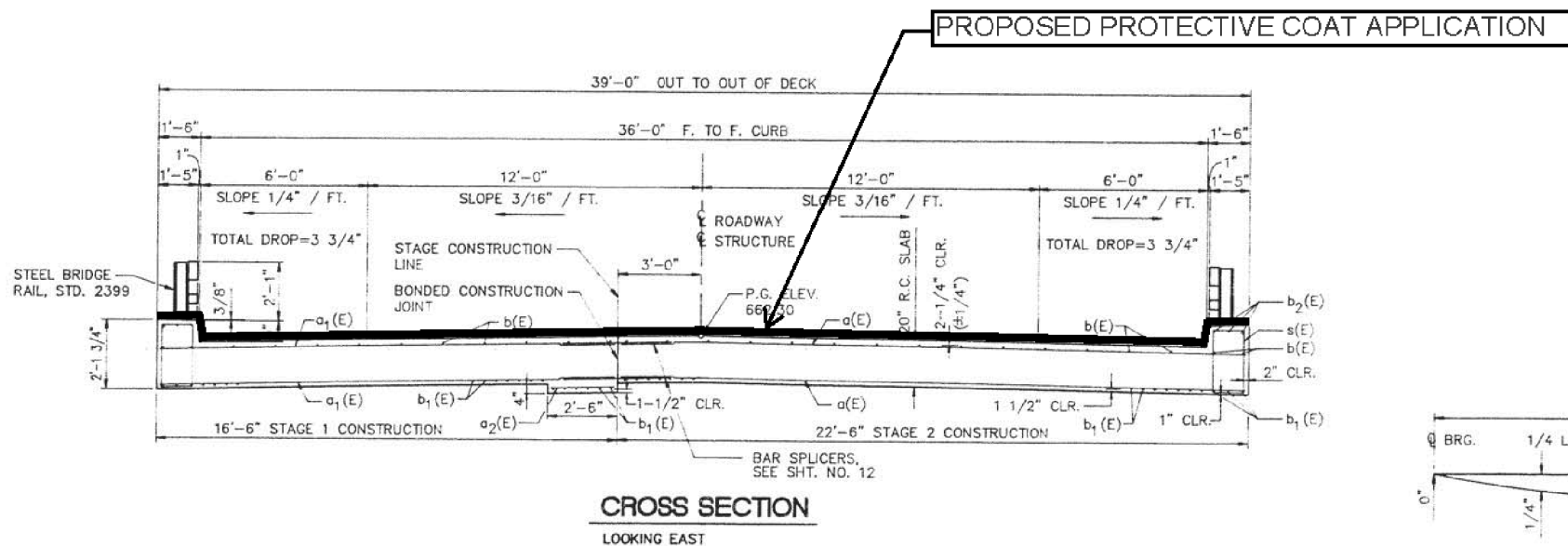
**PLAN**

**BILL OF MATERIALS SUPERSTRUCTURE**

BAR	SIZE	NO. REQ'D	LENGTH	SHAPE
a(E)	#5	67	22'-2"	—
a1(E)	#5	67	16'-2"	—
a2(E)	#5	39	2'-2"	—
a3(E)	#6	6	22'-2"	—
a4(E)	#6	6	16'-2"	—
b(E)	#5	28	31'-7"	—
b1(E)	#9	74	31'-7"	—
b2(E)	#8	6	31'-7"	—
h3(E)	#6	3	21'-0"	—
h4(E)	#6	3	15'-0"	—
s(E)	#4	60	6'-5"	□
s1(E)	#4	42	6'-1"	□
s2(E)	#4	42	5'-2"	□

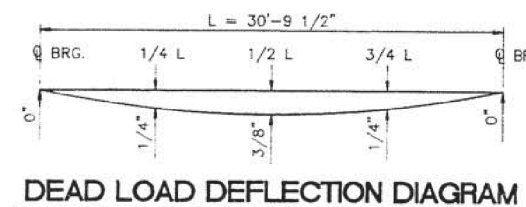
ITEM	UNIT	QUANTITY
PREFORMED JOINT SEAL 2-1/2"	LIN. FT.	39
CLASS "X" CONCRETE SUPERSTRUCTURE	CU. YD.	84.0
PROTECTIVE COAT	SQ. YD.	22
ELASTOMERIC BEARING ASSEMBLY TYPE I	EACH	7
FURNISHING AND ERECTING STRUCTURAL STEEL	POUND	1822
REINFORCEMENT BARS, EPOXY COATED	POUND	13,220

REINFORCEMENT BARS DESIGNATED (E) SHALL BE EPOXY COATED. SEE SHT. NO. 14 FOR BAR BENDING DETAILS.  
• SEE SHT. NO. 17 FOR ADDITIONAL PARAPET WALL DETAILS.



**CROSS SECTION**  
LOOKING EAST

**TYPICAL SECTION; TWO-LANE TWO-WAY WITH CURB**



**DEAD LOAD DEFLECTION DIAGRAM**

**SUPERSTRUCTURE**

U.S. 36 over Dry Fork Creek  
F.A.P. RTE. 79 Section 143 BR-3  
Douglas County  
Sta. 156+84  
Structure Number 021-0017

Drawn **EWING**  
Date 5/30/90  
REV. 8/90  
Project No. 16189002

**UPCHURCH AND ASSOCIATES**  
engineers architects surveyors  
MATTOON, IL. 235-3177



REV 10-15-90 BY HLC CHANGED REINFORCEMENT BARS, EPOXY COATED FROM 13,263 TO 13,220 POUNDS

•FY2014 BRIDGE DECK SEALING  
•DOUGLAS, EDGAR, & PIATT COUNTIES

FILE NAME =	USER NAME = ppersonbr	DESIGNED - TJB	REVISED -
et:\pw\work\p\pidot\ppersonbr\d0312248\0570918-sht-Typical.dgn		DRAWN - DFJ	REVISED -
PLOT SCALE = 40.0000' / in.		CHECKED -	REVISED -
PLOT DATE = 11/21/2013		DATE - 08/15/12	REVISED -

**STATE OF ILLINOIS**  
**DEPARTMENT OF TRANSPORTATION**

**TYPICAL SECTION;**  
**2 LANE 2 WAY HIGHWAY WITH CURB**

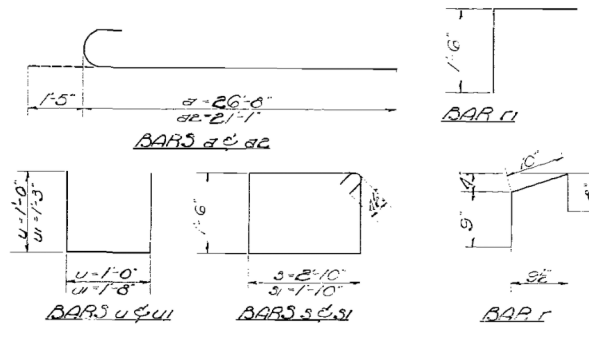
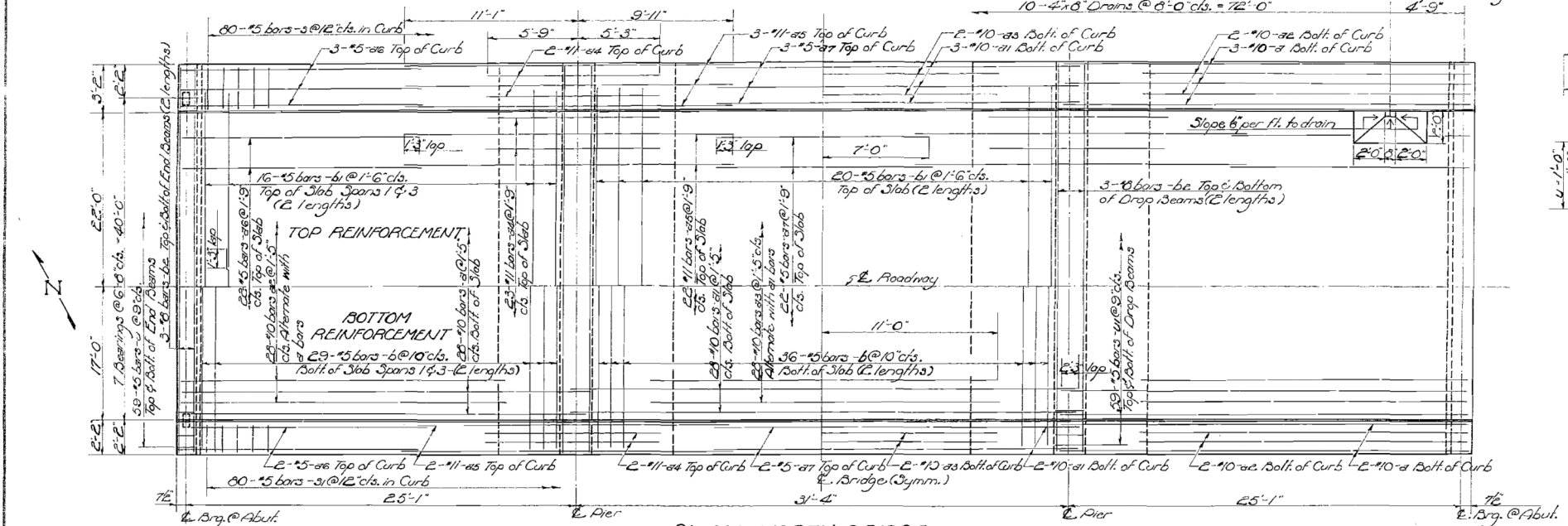
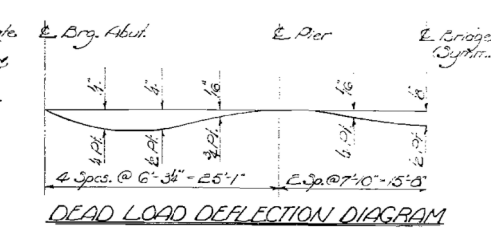
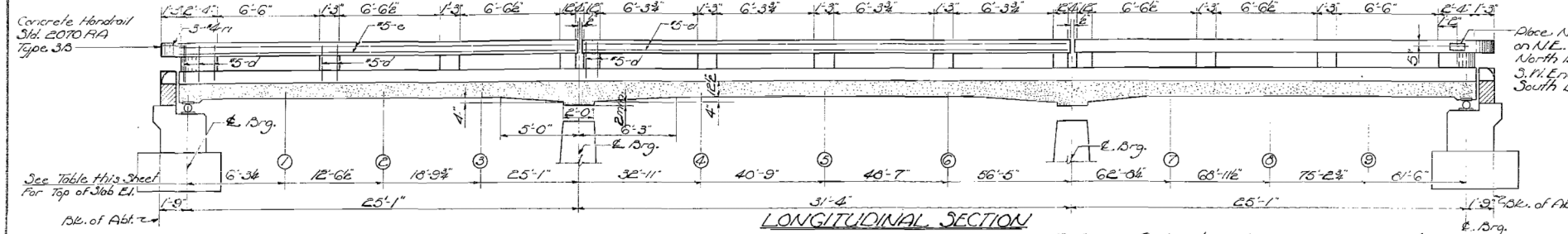
SCALE: NONE SHEET NO. 1 OF 1 SHEETS STA. TO STA.

F.A.I. RTE.	SECTION	COUNTY	TOTAL SHEETS	SHEET NO.
VAR	.	..	21	10
			CONTRACT NO. 70918	
ILLINOIS FED. AID PROJECT				



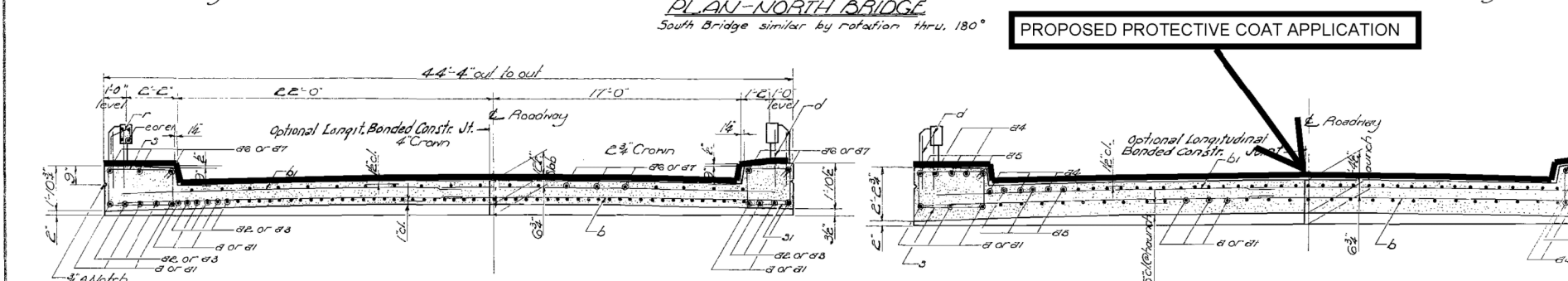
STATE OF ILLINOIS  
DEPARTMENT OF PUBLIC WORKS & BUILDINGS  
DIVISION OF HIGHWAYS

ROUTE NO.	SECTION	COUNTY	SHEET NO.	SHEET NO.
S. & L. 74	57-17B	MCLEAN	19	6
FED. ROAD DIST. NO. 1				



BILL OF MATERIAL - P. BRIDGES

Bar	No.	Size	Length	Spaced
4	132	#10	22'-1"	
41	66	#10	33'-6"	
42	126	#10	22'-0"	
43	66	#10	22'-0"	
44	108	#11	11'-0"	
45	108	#11	21'-0"	
46	108	#5	15'-9"	
47	54	#5	14'-0"	
6	376	#5	22'-3"	
61	208	#5	21'-6"	
62	96	#5	23'-0"	
9	160	#5	9'-5"	
31	160	#5	7'-5"	
41	472	#5	3'-0"	
41	472	#5	4'-2"	
0'	216	#5	2'-9"	
6	32	#5	25'-6"	
01	16	#5	31'-0"	
7	112	#4	2'-3"	
71	24	#4	3'-0"	
Class A Concrete	Cu. Yds.	334.1		
Horizontal Concrete	Cu. Yds.	0.0		
Reinforcement Bars	Lbs.	32,630		
Structural Steel	Lbs.	20,040		
Name Bars	Each	2		



TYPICAL SECTION; FOUR-LANE WITH CURB; DUAL STRUCTURES

Location	E. Drg. Abut. (1)	(2)	(3)	E. Pier (4)	(5)	(6)	E. Pier (7)	(8)	(9)	E. Drg. Abut.			
Theoretical Elevation	755.75	755.70	755.01	755.05	755.00	755.93	755.97	756.02	756.07	756.10	756.14	756.10	756.22
Theoretical El. + 10.00	755.75	755.00	755.03	755.06	755.00	755.93	755.98	756.02	756.07	756.11	756.16	756.20	756.22

DESIGNED: Joseph W. Lanni  
CHECKED: C. W. Shick  
DRAWN: R. W. Lanni  
CHECKED: C. W. Shick

EXAMINED: R. B. ...  
PASSED: ...  
APPROVED: R. B. ...

SUPERSTRUCTURE  
F.A.I.R.I. 74 - SEC. 57-17B  
MCLEAN COUNTY  
STA. 1512+64

# DOUGLAS COUNTY STRUCTURE SCHEDULE OF QUANTITIES ACTUAL MEASUREMENTS

DOUGLAS COUNTY STRUCTURE SCHEDULE OF QUANTITIES ACTUAL MEASUREMENTS																								
SN	ROUTE CARRIED	FEATURE CROSSED	SIMS INFORMATION		DECK			APPROACH SLABS					PARAPETS (HUB, FACE & TOP)			TYPE B CURB (FACE & TOP)			GRAND TOTAL (SQ FT)	LOC.	RURAL	URBAN		
			LENGTH (FT)	O-0 WIDTH (FT)	LENGTH (E -E)	WIDTH (F-F)	TOTAL AREA (SQ FT)	TOTAL LENGTH (FT)	LENGTH INSIDE PARAPET (FT)	WIDTH INSIDE PARAPET (FT)	LENGTH BEYOND PARAPET (FT)	WIDTH BEYOND PARAPET (O-O)	TOTAL AREA (SQ FT)	HEIGHT	LENGTH		TOTAL AREA (SQ FT)	HEIGHT					LENGTH	TOTAL AREA (SQ FT)
														4.15 FT TYPICAL	ALONG DECK (FT)	ALONG APPR. (FT)		9 INCH TYPICAL					ALONG APPR. PVT.	
021-0001	I-57 (NB)	CNRL RR/ BIKE PATH	152.7	43.3	150.4	40.1	6029.8	29.5	11.5	40.1	18.0	43.3	2483.7	4.15	150.4	11.5	1439.0	0.75	5.0	15.0	9968	D25	X	
021-0002	I-57 (SB)	CNRL RR/ BIKE PATH	152.7	43.3	150.4	40.1	6029.8	29.5	11.5	40.1	18.0	43.3	2483.7	4.15	150.4	11.5	1439.0	0.75	5.0	15.0	9968		X	
021-0003	I-57 (NB)	DRAINAGE DITCH	110.7	43.9	108.4	40.7	4410.7	0.0	0	40.7	0.0	43.9	0.0	3.32	108.4	10.0	852.4	0.75	0.0	0.0	5264		X	
021-0004	I-57 (SB)	DRAINAGE DITCH	110.7	43.9	108.4	40.7	4410.7	0.0	0	40.7	0.0	43.9	0.0	3.32	108.4	10.0	852.4	0.75	0.0	0.0	5264		X	
021-0005	I-57 (SB)	DRAINAGE DITCH	95.9	43.0	93.6	40.5	3789.6	0.0	0	40.5	0.0	43.0	0.0	0.00	93.6	0.0	507.2	0.75	0.0	0.0	4297	D27	X	
021-0006	I-57 (NB)	DRAINAGE DITCH	95.9	43.0	93.6	40.5	3789.6	0.0	0	40.5	0.0	43.0	0.0	0.00	93.6	0.0	507.2	0.75	0.0	0.0	4297		X	
021-0007	I-57 (NB)	SCATTERING FORK	111.9	43.0	109.6	40.5	4437.6	0.0	0	40.5	0.0	43.0	0.0	0.00	109.6	0.0	566.1	0.75	0.0	0.0	5004		X	
021-0008	I-57 (SB)	SCATTERING FORK	111.9	43.0	109.6	40.5	4437.6	0.0	0	40.5	0.0	43.0	0.0	0.00	109.6	0.0	566.1	0.75	0.0	0.0	5004		X	
021-0009	I-57 (NB)	FAP 323(US 36)	166.8	48.5	164.5	45.3	7450.5	29.5	0	45.3	29.5	48.5	2864.4	4.15	164.5	0.0	1365.1	0.75	29.5	88.6	11769	D26	X	
021-0010	I-57 (SB)	FAP 323(US 36)	166.8	48.5	164.5	45.3	7450.5	29.5	0	45.3	29.5	48.5	2864.4	4.15	164.5	0.0	1365.1	0.75	29.5	88.6	11769		X	
021-0011	US 45(FAS 1671)	HAYES BRANCH	48.7	38.7	45.6	35.5	1617.7	29.5	0	35.5	29.5	38.7	2285.6	4.15	45.6	0.0	378.2	0.75	29.5	88.6	4371	D23	X	
021-0012	US 45(FAS 1671)	SCATTERING FORK	94.6	35.2	92.3	32.0	2952.6	49.8	0	32.0	49.8	35.2	3505.2	4.15	92.3	0.0	765.8	0.75	5.0	15.0	7239	D24	X	
021-0017	FAP 323(US 36)	DRY FORK	32.6	39.0	30.3	36.0	1089.7	20.0	0	36.0	20.0	39.0	1560.0	2.25	30.3	0.0	136.2	0.75	5.0	15.0	2801	D2	X	
021-0018	FAP 323(US 36)	KASKASKIA RIVER	174.6	39.2	172.3	36.0	6201.7	41.2	0	36.0	41.2	39.2	1890.0	4.15	172.3	0.0	1429.8	0.75	15.0	45.0	9567	D1	X	
021-0020	FAP 323(US 36)	HAYES BRANCH DITCH	82.6	36.3	80.3	30.0	2408.1	0.0	0	30.0	0.0	36.3	0.0	1.00	80.3	0.0	160.5	0.75	3.0	9.0	2578	D8	X	
021-0026	FAP 749(IL 133)	DRAINAGE DITCH	24.0	42.0	21.7	39.0	845.1	20.0	0	39.0	20.0	42.0	840.0	2.25	21.7	0.0	97.5	0.75	5.0	15.0	1798	D19	X	
021-0029	IL 130(FAP 808)	EMBARRAS RIVER	342.0	35.2	339.7	32.0	10869.4	30.0	10	32.0	20.0	35.2	2048.0	4.15	339.7	10.0	2985.3	0.75	0.0	0.0	15903	D9	X	
021-0030	IL 130(FAP 820)	EMBARRAS RIVER	175.5	35.2	173.2	32.0	5541.4	20.0	0	32.0	20.0	35.2	1408.0	4.15	173.2	0.0	1437.3	0.75	0.0	0.0	8387		X	
021-0031	IL 130(FAP 820)	SCATTERING FORK	127.4	35.2	125.1	32.0	4002.2	20.0	0	32.0	20.0	35.2	1408.0	4.15	125.1	0.0	1038.1	0.75	0.0	0.0	6449	D17	X	
021-0034	FAS 522(CH 6)	I-57	222.5	30.0	220.2	26.5	5834.5	0.0	0	26.5	0.0	30.0	0.0	3.32	220.2	0.0	1850.7	0.75	0.0	0.0	7686	D4	X	
021-0037	TR 119	I-57	222.0	29.7	219.7	26.5	5821.3	0.0	0	26.5	0.0	29.7	0.0	3.32	219.7	0.0	1867.3	0.75	0.0	0.0	7689	D13	X	
021-0041	TR 157 D	I-57	223.0	29.8	220.7	26.2	5774.9	0.0	0	26.2	0.0	29.8	388.8	3.32	220.7	0.0	1465.2	0.75	0.0	0.0	7629	D15	X	
021-0043	TR 25	I-57	221.0	30.0	218.7	26.5	5794.8	0.0	0	26.5	0.0	30.0	388.8	3.32	218.7	0.0	1452.0	0.75	0.0	0.0	7636	D5	X	
021-0044	TR 49	I-57	221.8	32.0	219.5	28.5	6254.9	0.0	0	28.5	0.0	32.0	388.8	3.32	219.5	0.0	1457.3	0.75	0.0	0.0	8101	D6	X	
021-0045	TR 83	I-57	229.2	30.0	226.9	26.5	6012.1	0.0	0	26.5	0.0	30.0	408.7	3.32	226.9	0.0	1506.4	0.75	0.0	0.0	7928	D11	X	
021-0046	TR 108	I-57	244.0	30.0	241.7	24.0	5800.1	0.0	0	24.0	0.0	30.0	408.7	3.32	241.7	0.0	1604.7	0.75	0.0	0.0	7814	D12	X	
021-0049	IL 130(FAP 820)	DEER CREEK	82.5	35.2	80.2	32.0	2565.4	20.0	0	32.0	20.0	35.2	1408.0	4.15	80.2	0.0	665.4	0.75	15.0	45.0	4684	D18	X	
021-0050	US 36(FAP 323)	DRAINAGE DITCH	82.0	39.2	79.7	36.0	2868.1	20.0	0	36.0	20.0	39.2	1568.0	4.15	79.7	0.0	661.3	0.75	5.0	15.0	5113	D10	X	
021-0051	US 36(FAP 323)	LAKE FORK RIVER	183.2	39.2	180.9	36.0	6511.3	20.0	0	36.0	20.0	39.2	1568.0	4.15	180.9	0.0	1501.2	0.75	5.0	15.0	9596	D3	X	
021-0052	FAP 323(US 36)	BRUSHY FORK RIVER	142.0	39.2	139.7	36.0	5028.1	20.0	0	36.0	20.0	39.2	1568.0	4.15	139.7	0.0	1159.3	0.75	20.0	60.0	7816	D21	X	
021-0053	FAP 749(IL 133)	SCATTERING FORK	56.0	35.2	53.7	32.0	1717.4	20.0	0	32.0	20.0	35.2	1408.0	4.15	53.7	0.0	445.5	0.75	5.0	15.0	3586	D14	X	
021-0054	FAP 749(IL 133)	UNION DIST #6	44.5	35.2	42.2	32.0	1349.4	20.0	0	32.0	20.0	35.2	1315.1	4.15	42.2	0.0	350.0	0.75	5.0	15.0	3030	D22	X	
021-0055	FAP 749(IL 133)	TRIB SCATTERING FORK	52.0	35.2	49.7	32.0	1589.4	20.0	0	32.0	20.0	35.2	1408.0	4.15	49.7	0.0	412.3	0.75	5.0	15.0	3425	D19	X	
021-0056	FAP 749(IL 133)	DRAINAGE DITCH	31.0	35.0	28.7	32.0	917.4	20.0	0	32.0	20.0	35.0	1400.0	2.25	28.7	0.0	129.0	0.75	5.0	15.0	2462	D22	X	
021-0057	FAP 323(US 36)	EMBARRAS RIVER	195.0	39.2	192.7	36.0	6936.1	20.0	0	36.0	20.0	39.2	1568.0	4.15	192.7	0.0	1599.2	0.75	20.0	60.0	10164	D8	X	
021-0059	FAP 749(IL 133)	KASKASKIA RIVER	330.0	43.2	327.7	40.0	13106.8	30.0	0	40.0	30.0	43.2	2592.0	4.15	327.7	0.0	2719.7	0.75	30.0	90.0	18509	D16	X	
021-0060	US RTE 45	U. P. & CSX RR	192.0	35.2	189.7	32.0	6069.4	30.0	0	32.0	30.0	35.2	2112.0	4.15	189.7	0.0	1574.3	0.75	30.0	90.0	13332		X	
021-0061	US RTE 45	U. P. RAILROAD	202.0	35.2	199.7	32.0	6389.4	30.0	0	32.0	30.0	35.2	2112.0	4.15	199.7	0.0	1657.3	0.75	30.0	90.0	13332	D24	X	
021-0062	US 45(FAS 1671)	US 36(FAP 323)	104.0	36.0	101.7	32.0	3253.4	30.0	30	32.0	0.0	36.0	1920.0	2.25	101.7	30.0	727.5	0.75	0.0	0.0	5901		X	

•FY2014 BRIDGE DECK SEALING  
•DOUGLAS, EDGAR, & PIATT COUNTIES

# DOUGLAS COUNTY STRUCTURE SCHEDULE OF QUANTITIES ACTUAL MEASUREMENTS

DOUGLAS COUNTY STRUCTURE SCHEDULE OF QUANTITIES																									
ACTUAL MEASUREMENTS																									
SN	ROUTE CARRIED	FEATURE CROSSED	SIMS INFORMATION		DECK			APPROACH SLABS					PARAPETS (HUB, FACE & TOP)			TYPE B CURB (FACE & TOP)			GRAND TOTAL (SQ FT)	LOC.	RURAL	URBAN			
			LENGTH (FT)	O-O WIDTH (FT)	LENGTH (E -E)	WIDTH (F-F)	TOTAL AREA (SQ FT)	TOTAL LENGTH (FT)	LENGTH INSIDE PARAPET (FT)	WIDTH INSIDE PARAPET (FT)	LENGTH BEYOND PARAPET (FT)	WIDTH BEYOND PARAPET (O-O)	TOTAL AREA (SQ FT)	HEIGHT	LENGTH		TOTAL AREA (SQ FT)	HEIGHT					LENGTH	TOTAL AREA (SQ FT)	
														4.15 FT TYPICAL	ALONG DECK (FT)	ALONG APPR. (FT)		9 INCH TYPICAL					ALONG APPR. PVT.		
021-2008	I-57 (NB)	CSX & UP RR	220.0	42.6	217.7	39.4	8576.2	29.5	0	39.4	29.5	42.6	2516.0	4.15	217.7	0.0	1806.7	0.75	29.5	88.6	12988	D26		X	
021-2009	I-57 (SB)	CSX & UP RR	220.0	42.6	217.7	39.4	8576.2	29.5	0	39.4	29.5	42.6	2516.0	4.15	217.7	0.0	1806.7	0.75	29.5	88.6	12988			X	
021-2010	I-57 (NB)	HAYES BRANCH	224.2	42.0	221.9	40.0	8874.8	0.0	0	40.0	0.0	42.0	388.8	3.32	221.9	0.0	1473.2	0.75	0.0	0.0	10737			X	
021-2011	I-57 (SB)	HAYES BRANCH	224.2	42.0	221.9	40.0	8874.8	0.0	0	40.0	0.0	42.0	388.8	3.32	221.9	0.0	1473.2	0.75	0.0	0.0	10737		X		
021-2012	US 36(FAP 323)	STREAM	20.0	40.0	17.7	39.0	689.1	0.0	0	39.0	0.0	40.0	26.7	0.00	17.7	0.0	124.4	0.75	5.0	15.0	856	D7		X	
021-2018	US 36(FAP 323)	DRAINAGE DITCH	46.2	38.0	43.9	36.0	1579.3	20.0	0	36.0	20.0	38.0	1520.0	2.25	43.9	0.0	197.4	0.75	5.0	15.0	3312	D10		X	
021-2020	FAP 749(IL 133)	STREAM	22.2	35.0	19.9	31.8	631.9	20.0	0	31.8	20.0	35.0	1400.0	2.25	19.9	0.0	89.4	0.75	5.0	15.0	2137	D22		X	
021-2022	FAP 323 (US 36)	BRUSHY FORK TRIB	41.5	39.0	39.2	36.0	1410.1	30.0	0	36.0	30.0	39.0	1850.0	2.25	39.2	0.0	176.3	0.75	5.0	15.0	3452	D20		X	
021-2026	FAP 323 (US 36)	HACKETT CREEK	45.9	48.0	44.3	40.0	1773.4	30.0	0	40.0	30.0	48.0	2520.0	2.25	44.3	0.0	199.5	0.75	30.0	90.0	4583	D8		X	

**GRAND TOTAL (SQ FT):**    348920    348920    0

•FY2014 BRIDGE DECK SEALING  
••DOUGLAS, EDGAR, & PIATT COUNTIES

# DOUGLAS COUNTY STRUCTURE SCHEDULE OF QUANTITIES TRAFFIC CONTROL & PROTECTION

COUNTY STRUCTURES TRAFFIC CONTROL & PROTECTION SCHEDULE																			
			RAILROAD COORDINATION, N. A. ; MAINTENANCE ACTIVITY					TRAFFIC CONTROL & PROTECTION					PROSECUTION & PROGRESS						
SN	ROUTE CARRIED	FEATURE CROSSED	OWNER	DOT/AAR NO.	MILE POST	FLAGGERS	INSURANCE (RRPLI)	701400	701406	701411 (DRIVING LANE ONLY)	701201	70200000	LOC.	SUMMARY	CHANGEABLE MESSAGE SIGN (Calendar Days)	WORKING DAYS	PROSECUTION	RURAL	URBAN
021-0001	I-57 (NB)	CNRL RR/ BIKE PATH						2	2	1			D25	4 - 701400 SET-UPS (2 DL; 2 PL) 4 - 701406 SET-UPS (2 DL; 2 PL) 2 - WD'S (1 DL; 1 PL) 2 STRUCTURES		2	1 DAY DRIVING LANES NB & SB; 1 DAY PASSING LANES NB & SB	X	
021-0002	I-57 (SB)	CNRL RR/ BIKE PATH						2	2									X	
021-0003	I-57 (NB)	DRAINAGE DITCH						INCL.	INCL.									X	
021-0004	I-57 (SB)	DRAINAGE DITCH						INCL.	INCL.									X	
021-0005	I-57 (SB)	DRAINAGE DITCH						2	2				D27	4 - 701400 SET-UPS (2 DL; 2 PL) 4 - 701406 SET-UPS (2 DL; 2 PL) 4 - WD'S (2 DL; 2 PL) 6 STRUCTURES	2 - CMS (1 NB; 1 SB); 7 CALENDAR DAYS PRIOR; 10 WORKING DAYS; 17 DAYS EACH DIRECTION; TOTAL 34 CALENDAR DAYS; 14 DOUGLAS COUNTY STRUCTURES ON FAI 57	4	2 DAY DRIVING LANES NB & SB; 2 DAY PASSING LANES NB & SB	X	
021-0006	I-57 (NB)	DRAINAGE DITCH						2	2									X	
021-0007	I-57 (NB)	SCATTERING FORK						INCL.	INCL.									X	
021-0008	I-57 (SB)	SCATTERING FORK						INCL.	INCL.									X	
021-0009	I-57 (NB)	FAP 323(US 36)						INCL.	INCL.	1			D26	SEE SN 0212008		INCL.	SEE 0212008	X	
021-0010	I-57 (SB)	FAP 323(US 36)						INCL.	INCL.	1								X	
021-0011	US 45(FAS 1671)	HAYES BRANCH									2		D23	2 - 701201 (1 NB; 1 SB) 1 - WD'S (1 NB; 1 SB) 1 STRUCTURE		1	1/2 DAY NB; 1/2 DAY SB	X	
021-0012	US 45(FAS 1671)	SCATTERING FORK										INCL.	D24	SEE SN 0210060		INCL.	SEE SN 0210060	X	
021-0017	FAP 323(US 36)	DRY FORK									2		D2	2 - 701201 (1 EB; 1 WB) 1 - WD 1 STRUCTURE		0.5	1/4 DAY EB; 1/4 DAY WB	X	
021-0018	FAP 323(US 36)	KASKASKIA RIVER									2		D1	2 - 701201 (1 EB; 1 WB) 1 - WD 1 STRUCTURE		0.5	1/4 DAY EB; 1/4 DAY WB	X	
021-0020	FAP 323(US 36)	HAYES BRANCH DITCH									2		D8	6-701201 (3 EB; 3 WB) 2 - WD'S 3 STRUCTURES INCL. SN 0210057 & 0212026		2	1 DAY EB; 1 DAY WB	X	
021-0026	FAP 749(IL 133)	DRAINAGE DITCH									2		D19	2-701201 (1 EB; 1 WB) 1 - WD 2 STRUCTURES INCL. 0210055		1	1/2 DAY EB; 1/2 DAY WB	X	
021-0029	IL 130(FAP 808)	EMBARRAS RIVER									2		D9	2-701201 (1 NB; 1 SB) 1 - WD 1 STRUCTURE		1	1/2 DAY NB; 1/2 DAY SB	X	
021-0030	IL 130(FAP 820)	EMBARRAS RIVER									2		D17	4-701201 (2 NB; 2 SB) 1 - WD 2 STRUCTURES		1	1/2 DAY NB; 1/2 DAY SB	X	
021-0031	IL 130(FAP 820)	SCATTERING FORK									2							X	
021-0034	FAS 522(CH 6)	I-57									2		D4	2-701201 (1 EB; 1 WB) 1 - WD 1 STRUCTURE		0.5	1/4 DAY EB; 1/4 DAY WB	X	
021-0037	TR 119	I-57										1	D13	1-70200000 1/2 - WD 1 STRUCTURE		0.5	1/2 DAY CLOSURE	X	
021-0041	TR 157 D	I-57										1	D15	1-70200000 1/2 - WD 1 STRUCTURE		0.5	1/2 DAY CLOSURE	X	
021-0043	TR 25	I-57										1	D5	1-70200000 1/2 - WD 1 STRUCTURE		0.5	1/2 DAY CLOSURE	X	
021-0044	TR 49	I-57										1	D6	1-70200000 1/2 - WD 1 STRUCTURE		0.5	1/2 DAY CLOSURE	X	
021-0045	TR 83	I-57										1	D11	1-70200000 1/2 - WD 1 STRUCTURE		0.5	1/2 DAY CLOSURE	X	
021-0046	TR 108	I-57										1	D12	1-70200000 1/2 - WD 1 STRUCTURE		0.5	1/2 DAY CLOSURE	X	
021-0049	IL 130(FAP 820)	DEER CREEK									2		D18	2-701201 (1 NB; 1 SB) 1 - WD 1 STRUCTURE		1	1/2 DAY NB; 1/2 DAY SB	X	
021-0050	US 36(FAP 323)	DRAINAGE DITCH									2		D10	4-701201 (2 EB; 2 WB) 1 - WD 2 STRUCTURES INCLUDING SN 0212018		1	1/2 DAY EB; 1/2 DAY WB	X	
021-0051	US 36(FAP 323)	LAKE FORK RIVER									2		D3	2-701201 (1 EB; 1 WB) 1/2 WD 1 STRUCTURE		0.5	1/4 DAY EB; 1/4 DAY WB	X	
021-0052	FAP 323(US 36)	BRUSHY FORK RIVER									2		D21	4-701201 (2 EB; 2 WB) 1 - WD 2 STRUCTURES INCLUDING SN 0212022		1	1/2 DAY EB; 1/2 DAY WB	X	

•FY2014 BRIDGE DECK SEALING  
•DOUGLAS, EDGAR, & PIATT COUNTIES

FILE NAME =	USER NAME = ppersonbr	DESIGNED - TJB	REVISED -	<b>STATE OF ILLINOIS DEPARTMENT OF TRANSPORTATION</b>	<b>DOUGLAS COUNTY STRUCTURE SCHEDULE OF QUANTITIES TRAFFIC CONTROL &amp; PROTECTION</b>	F.A.I. RTE.	SECTION	COUNTY	TOTAL SHEETS	SHEET NO.	
et:\pw\work\p\dot\personbr\d0312248\050918-sht-schedule.dgn		DRAWN - DFJ	REVISED -			VAR	*	**	21	15	
PLOT SCALE = 40.0000' / in.		CHECKED -	REVISED -			CONTRACT NO. 70918					
PLOT DATE = 11/21/2013		DATE - 08/15/12	REVISED -			SCALE: NONE	SHEET NO. 1 OF 2 SHEETS	STA.	TO STA.	ILLINOIS FED. AID PROJECT	

# DOUGLAS COUNTY STRUCTURE SCHEDULE OF QUANTITIES TRAFFIC CONTROL & PROTECTION

COUNTY STRUCTURES TRAFFIC CONTROL & PROTECTION SCHEDULE																								
			RAILROAD COORDINATION, N. A. ; MAINTENANCE ACTIVITY										PROSECUTION & PROGRESS											
SN	ROUTE CARRIED	FEATURE CROSSED	OWNER	DOT/AAR NO.	MILE POST	FLAGGERS	INSURANCE (RRPLI)	701400	701406	701411 (DRIVING LANE ONLY)	701201	70200000	LOC.	SUMMARY	CHANGEABLE MESSAGE SIGN (Calendar Days)	WORKING DAYS	PROSECUTION	RURAL	URBAN					
021-0053	FAP 749( IL 133)	SCATTERING FORK									2		D14	2-701201 ( 1 EB; 1 WB) 1/2 WD 1 STRUCTURE		0.5	1/4 DAY EB; 1/4 DAY WB	X						
021-0054	FAP 749( IL 133)	UNION DIST #6									2		D22	2-701201 ( 1 EB; 1 WB) 1 WD 3 STRUCTURES INCLUDING SN 0210056, & 0212020		1	1/2 DAY EB; 1/2 DAY WB	X						
021-0055	FAP 749( IL 133)	TRIB SCATTERING FORK									INCL.		D19	SEE SN 0210026		INCL.	INCL.	X						
021-0056	FAP 749( IL 133)	DRAINAGE DITCH									INCL.		D22	SEE SN 0210054		INCL.	INCL.	X						
021-0057	FAP 323( US 36)	EMBARRAS RIVER									2		D8	SEE SN 0210020		INCL.	INCL.	X						
021-0059	FAP 749( IL 133)	KASKASKIA RIVER									2		D16	2-701201 ( 1 EB; 1 WB) 1/2 - WD 1 STRUCTURE		0.5	1/4 DAY EB; 1/4 DAY WB	X						
021-0060	US RTE 45	U. P. & CSX RR	ICRR	908 288 W	150.00						2		D24	2 - 701201 SET-UPS ( 1 NB; 1 SB) 2 - WD' S 4 STRUCTURES INCLUDING SN 0210012		2	1 DAY NB; 1 DAY SB	X						
021-0061	US RTE 45	U. P. RAILROAD	UPRR/CSX	167 017 S/154 561 P	153.7/241.68						INCL.											X		
021-0062	US 45( FAS 1671)	US 36( FAP 323)									INCL.												X	
021-2008	I-57 ( NB)	CSX & UP RR	UPRR/CSX	167 015 D/167 015 D	152.1/152.1			2	2	1			D26	4 - 701400 SET-UPS ( 2 DL; 2 PL) 4 - 701406 SET-UPS ( 2 DL; 2 PL) 3-701411 4 - WD' S ( 2 DL; 2 PL) 6 STRUCTURES INCLUDING SN 0210009 & 0210010	SEE SN 0210001	4	2 DAY DRIVING LANES NB & SB; 2 DAY PASSING LANES NB & SB	X						
021-2009	I-57 ( SB)	CSX & UP RR	UPRR/CSX	167 015 D/167 015 D	152.1/152.1			2	2														X	
021-2010	I-57 ( NB)	HAYES BRANCH						INCL.	INCL.														X	
021-2011	I-57 ( SB)	HAYES BRANCH						INCL.	INCL.														X	
021-2012	US 36( FAP 323)	STREAM									2		D7	2-701201 ( 1 EB; 1 WB) 1/2 - WD 1 STRUCTURE		0.5	1/4 DAY EB; 1/4 DAY WB	X						
021-2018	US 36( FAP 323)	DRAINAGE DITCH									2		D10	SEE SN 0210050		INCL.	INCL.	X						
021-2020	FAP 749( IL 133)	STREAM									INCL.		D22	SEE SN 0210054		INCL.	INCL.	X						
021-2022	FAP 323 ( US 36)	BRUSHY FORK TRIB									2		D20	SEE SN 0210052		INCL.	INCL.	X						
021-2026	FAP 323 ( US 36)	HACKETT CREEK									2		D8	SEE SN 0210020		INCL.	INCL.	X						

TOTAL TC&P SET-UPS; LOCATIONS; CMS CALENDAR DAYS; ESTIMATED WORKING DAYS:	12	12	4	44	6
---	----	----	---	----	---

28.5
------

•FY2014 BRIDGE DECK SEALING  
••DOUGLAS, EDGAR, & PIATT COUNTIES



# EDGAR COUNTY STRUCTURE SCHEDULE OF QUANTITIES ACTUAL MEASUREMENTS

EDGAR COUNTY STRUCTURE SCHEDULE OF QUANTITIES ACTUAL MEASUREMENTS																										
SIMS INFORMATION			ACTUAL MEASUREMENTS																				GRAND TOTAL (SQ FT)	LOC.	RURAL	URBAN
			LENGTH (FT)	O-O WIDTH (FT)	LENGTH (E-E)	WIDTH (F-F)	TOTAL AREA (SQ FT)	TOTAL LENGTH (FT)	LENGTH INSIDE PARAPET (FT)	WIDTH INSIDE PARAPET (FT)	LENGTH BEYOND PARAPET (FT)	WIDTH BEYOND PARAPET (O-O)	TOTAL AREA (SQ FT)	HEIGHT	LENGTH		TOTAL AREA (SQ FT)	HEIGHT	LENGTH	TOTAL AREA (SQ FT)						
SN	ROUTE CARRIED	FEATURE CROSSED	4.15 FT TYPICAL	ALONG DECK (FT)	ALONG APPR. (FT)	9 INCH TYPICAL	ALONG APPR. PVT.																			
023-0007	US 36(FAP 323)	BROUILLETTS CR	38.0	39.2	35.7	36.0	1284.1	20.0	0	36.0	20.0	39.2	1253.3	4.15	35.7	0.0	296.1	0.75	0.0	0.0	2834	E3	X			
023-0010	US 36(FAP 323)	CRABAPPLE CREEK	63.0	39.2	60.7	36.0	2184.1	30.0	0	36.0	30.0	39.2	2352.0	4.15	60.7	0.0	503.6	0.75	5.0	15.0	5055	E4	X			
023-0015	IL 133 (FAP 749)	HICKORY GROVE CREEK	147.0	32.0	144.7	32.0	4629.4	0.0	0	32.0	0.0	32.0	0.0	0.00	144.7	0.0	0.0	0.00	0.0	0.0	4630	E7	X			
023-0024	IL 1 US 150(FAP 332)	PARIS LAKE	128.5	66.0	126.2	62.8	7923.5	20.0	0	62.8	20.0	66.0	2640.0	4.15	126.2	0.0	1047.2	0.75	15.0	45.0	14311	E9		X		
023-0026	IL 49(FAP 836)	EAST DONICA CREEK	70.0	35.2	67.7	32.0	2165.4	20.0	10	32.0	10.0	35.2	1344.0	4.15	67.7	10.0	727.7	0.75	0.0	0.0	4238	E8	X			
023-0027	FAP 323(US 36)	STREAM	62.5	39.2	60.2	36.0	2166.1	20.0	10	36.0	10.0	39.2	1330.0	4.15	60.2	10.0	499.4	0.75	5.0	15.0	4011	E6	X			
023-0028	FAP 323(US 36)	STREAM	62.5	39.2	60.2	36.0	2166.1	20.0	10	36.0	10.0	39.2	1330.0	4.15	60.2	10.0	499.4	0.75	5.0	15.0	4011		X			
023-0030	US 36(FAP 323)	LICK RUN	53.0	39.2	50.7	36.0	1824.1	20.0	0	36.0	20.0	39.2	1568.0	4.15	50.7	0.0	420.6	0.75	5.0	15.0	3828	E5	X			
023-0031	FAP 323(US 36)	BRUSHY CREEK	57.5	39.2	55.2	36.0	1986.1	20.0	0	36.0	20.0	39.2	1330.0	4.15	55.2	0.0	457.9	0.75	0.0	0.0	3775	E2	X			
023-0032	FAP 323(US 36)	STREAM	64.0	39.2	61.7	36.0	2220.1	20.0	0	36.0	20.0	39.2	1568.0	4.15	61.7	0.0	511.9	0.75	5.0	15.0	4315		X			
023-0033	US 36(FAP 323)	BROUILLETTS CREEK	98.0	35.2	96.5	32.0	3088.0	30.0	0	32.0	30.0	35.2	2112.0	4.15	96.5	0.0	801.0	0.75	30.0	90.0	6091	E3	X			
023-2010	IL 49(FAP 836)	TRIB OF BRUSHY FORK	34.0	34.0	31.7	32.0	1013.4	30.0	0	32.0	30.0	34.0	2040.0	1.55	31.7	0.0	98.2	0.75	0.0	0.0	3152	E1	X			
023-2014	IL 49(FAP 836)	STREAM	43.8	34.7	41.5	32.0	1327.0	30.0	0	32.0	30.0	34.7	2082.0	2.25	41.5	0.0	186.6	0.75	30.0	90.0	3686		X			

**GRAND TOTAL (SQ FT):**    63937    49626    14311

•FY2014 BRIDGE DECK SEALING  
•DOUGLAS, EDGAR, & PIATT COUNTIES

# EDGAR STRUCTURE SCHEDULE OF QUANTITIES TRAFFIC CONTROL & PROTECTION

			COUNTY STRUCTURES TRAFFIC CONTROL & PROTECTION SCHEDULE																
			RAILROAD COORDINATION, N. A. ; MAINTENANCE ACTIVITY					TRAFFIC CONTROL & PROTECTION							PROSECUTION & PROGRESS				
SN	ROUTE CARRIED	FEATURE CROSSED	OWNER	DOT/AAR NO.	MILE POST	FLAGGERS	INSURANCE (RRPLI)	701400	701406	701411 (DRIVING LANE ONLY)	701201	70200000	LOC.	SUMMARY	CHANGEABLE MESSAGE SIGN (Calendar Days)	WORKING DAYS	PROSECUTION	RURAL	URBAN
023-0007	US 36(FAP 323)	BROUILLETTS CR									1		E3	2-701201 ( 1 EB; 1 WB) 1 - WD 2 STRUCTURES INCLUDING SN 0230033		1	1/2 DAY EB; 1/2 DAY WB	X	
023-0010	US 36(FAP 323)	CRABAPPLE CREEK									2		E4	2-701201 ( 1 EB; 1 WB) 1/2 - WD 1 STRUCTURE		0.5	1/4 DAY EB; 1/4 DAY WB	X	
023-0015	IL 133 (FAP 749)	HICKORY GROVE CREEK									2		E7	2-701201 ( 1 EB; 1 WB) 1 - WD 1 STRUCTURE		0.5	1/4 DAY EB; 1/4 DAY WB	X	
023-0024	IL 1 US 150(FAP 332)	PARIS LAKE									2		E9	2-701201 ( 1 NB; 1 SB) 1 - WD 1 STRUCTURE		1	1/2 DAY NB; 1/2 DAY SB		X
023-0026	IL 49(FAP 836)	EAST DONICA CREEK									2		E8	2-701201 ( 1 NB; 1 SB) 1/2 - WD 1 STRUCTURE		0.5	1/4 DAY NB; 1/4 DAY SB	X	
023-0027	FAP 323(US 36)	STREAM									1		E6	2-701201 ( 1 EB; 1 WB) 1 - WD 2 STRUCTURES		1	1/2 DAY EB; 1/2 DAY WB	X	
023-0028	FAP 323(US 36)	STREAM									1							X	
023-0030	US 36(FAP 323)	LICK RUN									2		E5	2-701201 ( 1 EB; 1 WB) 1/2 - WD 1 STRUCTURE		0.5	1/4 DAY EB; 1/4 DAY WB	X	
023-0031	FAP 323(US 36)	BRUSHY CREEK									2		E2	4-701201 ( 2 EB; 2 WB) 1 - WD 2 STRUCTURES		1	1/2 DAY EB; 1/2 DAY WB	X	
023-0032	FAP 323(US 36)	STREAM									2							X	
023-0033	US 36(FAP 323)	BROUILLETTS CREEK									1		E3	SEE 0230007		INCL.	INCL.	X	
023-2010	IL 49(FAP 836)	TRIB OF BRUSHY FORK									1		E1	2-701201 ( 1 NB, 1 SB) 1 - WD 2 STRUCTURES		1	1/2 DAY NB; 1/2 DAY SB	X	
023-2014	IL 49(FAP 836)	STREAM									1							X	

TOTAL TC&P SET-UPS; LOCATIONS; CMS CALENDAR DAYS; ESTIMATED WORKING DAYS:	0	0	0	20	0
---	---	---	---	----	---

7
---

•FY2014 BRIDGE DECK SEALING  
••DOUGLAS, EDGAR, & PIATT COUNTIES

FILE NAME =	USER NAME = ppersonbr	DESIGNED - TJB	REVISED -	<b>STATE OF ILLINOIS DEPARTMENT OF TRANSPORTATION</b>	<b>EDGAR COUNTY STRUCTURE SCHEDULE OF QUANTITIES TRAFFIC CONTROL &amp; PROTECTION</b>	F.A.I. RTE.	SECTION	COUNTY	TOTAL SHEETS	SHEET NO.	
et:\pwork\pwork\personbr\d0312248\0570918-sht-schedule.dgn		DRAWN - DFJ	REVISED -			VAR	.	**	21	18	
PLOT SCALE = 40.0000' / in.		CHECKED -	REVISED -			CONTRACT NO. 70918					
PLOT DATE = 11/21/2013		DATE - 08/15/12	REVISED -			SCALE: NONE	SHEET NO. 1 OF 1 SHEETS	STA.	TO STA.	ILLINOIS FED. AID PROJECT	

# PIATT COUNTY STRUCTURE SCHEDULE OF QUANTITIES ACTUAL MEASUREMENTS

PIATT COUNTY STRUCTURE SCHEDULE OF QUANTITIES ACTUAL MEASUREMENTS																								
			SIMS INFORMATION		DECK			APPROACH SLABS					PARAPETS (HUB, FACE & TOP)			TYPE B CURB (FACE & TOP)			GRAND TOTAL (SQ FT)	LOC.	RURAL	URBAN		
													HEIGHT	LENGTH		TOTAL AREA (SQ FT)	HEIGHT	LENGTH					TOTAL AREA (SQ FT)	
SN	ROUTE CARRIED	FEATURE CROSSED	LENGTH (FT)	0-0 WIDTH (FT)	LENGTH (E-E)	WIDTH (F-F)	TOTAL AREA (SQ FT)	TOTAL LENGTH (FT)	LENGTH INSIDE PARAPET (FT)	WIDTH INSIDE PARAPET (FT)	LENGTH BEYOND PARAPET (FT)	WIDTH BEYOND PARAPET (0-0)	TOTAL AREA (SQ FT)	4.15 FT TYPICAL	ALONG DECK (FT)	ALONG APPR. (FT)	TOTAL AREA (SQ FT)	9 INCH TYPICAL	ALONG APPR. PVT.	TOTAL AREA (SQ FT)				
074-0001	I-72 (EB)	IC RR	151.7	41.6	149.4	38.4	5735.8	29.5	14.76	38.4	14.8	41.6	2362.4	4.15	149.4	14.8	1484.8	0.75	14.8	44.3	9628	P17	X	
074-0002	I-72 (WB)	IC RR	151.7	41.6	149.4	38.4	5735.8	29.5	14.76	38.4	14.8	41.6	2362.4	4.15	149.4	14.8	1484.8	0.75	14.8	44.3	9628		X	
074-0005	IL 10 (FAP 721)	MADDEN CREEK	151.4	32.0	149.1	32.0	4770.2	0.0	0	32.0	0.0	32.0	0.0	0.00	149.1	0.0	0.0	0.75	0.0	0.0	4771	P6	X	
074-0007	IL 10 (FAP 721)	I-72	269.2	36.2	266.9	33.0	8806.7	30.0	0	33.0	30.0	36.2	2172.0	4.15	266.9	0.0	2215.0	0.75	30.0	90.0	13284	P8	X	
074-0013	IL 48(FAP 760)	CREEK	32.0	42.2	29.7	38.5	1142.3	20.0	0	38.5	20.0	42.2	1688.0	0.00	29.7	0.0	145.7	0.75	5.0	15.0	2992	P12	X	
074-0015	IL 48(FAP 760)	CREEK	47.6	35.2	45.3	32.0	1448.6	20.0	0	32.0	20.0	35.2	1330.0	4.15	45.3	0.0	375.7	0.75	5.0	15.0	3170	P13	X	
074-0016	IL 48(FAP 760)	CREEK	25.4	42.2	23.1	38.5	888.2	20.0	0	38.5	20.0	42.2	1688.0	0.00	23.1	0.0	117.6	0.75	5.0	15.0	2709		X	
074-0021	FAS 538(BRIDGE ST)	SANGAMON RIVER	530.7	39.2	528.4	36.0	19021.3	30.0	13.5	36.0	16.5	39.2	2265.6	4.15	528.4	13.5	4609.6	0.75	16.5	49.5	25946	P19		X
074-0030	IL 105(FAP 741)	CREEK	29.0	45.3	26.7	42.3	1128.9	20.0	0	42.3	20.0	45.3	1812.0	2.25	26.7	0.0	120.0	0.75	5.0	15.0	3076	P23	X	
074-0035	TR 87	I-72	223.2	27.7	220.9	22.0	4859.1	0.0	0	22.0	0.0	27.7	0.0	3.32	220.9	0.0	1466.6	0.75	0.0	0.0	6715	P18	X	
074-0036	FAS 1532 (TR 154)	I-72	233.4	29.8	231.1	24.0	5545.7	0.0	0	24.0	0.0	29.8	0.0	3.32	231.1	0.0	1534.3	0.75	0.0	0.0	7469	P9	X	
074-0040	TR 80	I-74	254.9	30.0	252.6	28.0	7072.0	0.0	0	28.0	0.0	30.0	0.0	3.32	252.6	0.0	1677.1	0.75	0.0	0.0	8750	P1	X	
074-0041	TR 96	I-74	260.6	30.0	258.3	28.0	7231.6	0.0	0	28.0	0.0	30.0	0.0	3.32	258.3	0.0	1714.9	0.75	0.0	0.0	8947	P2	X	
074-0044	FAS 495	I-74	251.7	68.0	249.4	64.8	16159.2	0.0	0	64.8	0.0	68.0	0.0	4.32	249.4	0.0	2154.6	0.75	0.0	0.0	18314	P3	X	
074-0055	IL 48 (FAP 760)	I-72	250.8	68.0	248.5	64.8	16338.9	0.0	0	64.8	0.0	68.0	155.0	3.46	248.5	5.0	1788.6	0.75	5.0	15.0	18298	P14	X	
074-0063	I-72 (EB)	WILDCAT CREEK	107.2	42.0	104.9	38.8	4069.0	0.0	0	38.8	0.0	42.0	0.0	3.43	104.9	0.0	719.4	0.75	0.0	0.0	4789	P22	X	
074-0064	I-72 (WB)	WILDCAT CREEK	107.2	42.0	104.9	38.8	4069.0	0.0	0	38.8	0.0	42.0	0.0	3.43	104.9	0.0	719.4	0.75	0.0	0.0	4789		X	
074-0067	I-72 (EB)	SANGAMON RIVER	677.9	42.0	675.6	38.5	26009.4	0.0	0	38.5	0.0	42.0	2928.7	3.32	675.6	0.0	4485.8	0.75	0.0	0.0	33424	P10		X
074-0068	I-72 (WB)	SANGAMON RIVER	677.9	42.0	675.6	38.5	26009.4	0.0	0	38.5	0.0	42.0	2928.7	3.32	675.6	0.0	4485.8	0.75	0.0	0.0	33424			X
074-0076	IL 10(FAP 721)	SANGAMON RIVER	590.0	34.0	587.7	32.0	18805.4	0.0	0	32.0	0.0	34.0	0.0	4.15	587.7	13.5	5101.8	0.75	0.0	0.0	23908	P7	X	
074-0079	IL 105(FAP 741)	CREEK	52.5	43.2	50.2	40.0	2006.8	20.0	0	40.0	20.0	43.2	1470.6	4.15	50.2	0.0	416.4	0.75	5.0	15.0	3909	P21	X	
074-0080	IL 105(FAP 741)	STREAM	42.0	43.2	39.7	40.0	1586.8	20.0	0	40.0	20.0	43.2	1470.6	4.15	39.7	0.0	329.3	0.75	5.0	15.0	3402	P20	X	
074-0081	IL 48(FAP 760)	STREAM	82.0	35.2	79.7	32.0	2549.4	20.0	0	32.0	20.0	35.2	1470.6	4.15	79.7	0.0	661.3	0.75	5.0	15.0	4697	P12	X	
074-0082	IL 48(FAP 760)	FRIENDS CREEK DITCH	147.5	35.2	145.2	32.0	4645.4	20.0	0	32.0	20.0	35.2	1287.0	4.15	145.2	0.0	1204.9	0.75	5.0	15.0	7153	P13	X	
074-0084	FAS 1517(US 150)	MADDEN CREEK	66.5	35.2	64.2	32.0	2053.4	30.0	0	32.0	30.0	35.2	2112.0	4.15	64.2	0.0	532.6	0.75	30.0	90.0	4789	P5	X	
074-0086	US 150 (FAS 1517)	N & W RR	164.0	35.2	161.7	32.0	5173.4	30.0	15	32.0	15.0	35.2	2016.0	4.15	161.7	15.0	1590.9	0.75	15.0	45.0	8826	P4	X	
074-0087	FAS 1517 (US 150)	S BRANCH SALT CREEK	113.0	35.2	110.7	32.0	3541.4	30.0	15	32.0	15.0	35.2	2016.0	4.15	110.7	15.0	1167.6	0.75	15.0	45.0	6771	P11	X	
074-2003	FAP 758(IL 32)	STREAM	45.3	63.8	43.0	32.0	1375.0	30.0	0	32.0	30.0	35.0	2100.0	2.25	43.0	0.0	193.4	0.75	30.0	90.0	3759	P16	X	
074-3171	FAP 760 (CH 17)	SANGAMON RIVER	372.0	36.2	369.7	34.0	12568.8	30.0	15	34.0	15.0	36.2	2820.0	4.15	369.7	15.0	3317.3	0.75	0.0	0.0	18707	P15	X	

**GRAND TOTAL (SQ FT):**    306044    213250    92794

•FY2014 BRIDGE DECK SEALING  
•DOUGLAS, EDGAR, & PIATT COUNTIES

# PIATT STRUCTURE SCHEDULE OF QUANTITIES TRAFFIC CONTROL & PROTECTION

COUNTY STRUCTURES TRAFFIC CONTROL & PROTECTION SCHEDULE																					
SN			RAILROAD COORDINATION, N. A. ; MAINTENANCE ACTIVITY					TRAFFIC CONTROL & PROTECTION										PROSECUTION & PROGRESS		RURAL	URBAN
			OWNER	DOT/AAR NO.	MILE POST	FLAGGERS	INSURANCE (RRPLI)	701400	701406	701411 (DRIVING LANE ONLY)	701201	70200000	LOC.	SUMMARY	CHANGEABLE MESSAGE SIGN (Calendar Days)	WORKING DAYS	PROSECUTION				
074-0001	I-72 (EB)	IC RR					2	2				P17	4 - 701400 SET-UPS (2 DL; 2 PL) 4 - 701406 SET-UPS (2 DL; 2 PL) 2 - WD'S (1 DL; 1 PL) 2 STRUCTURES	SEE SN 0740063	2	1 DAY DRIVING LANES EB & WB; 1 DAY PASSING LANES EB & WB	X				
074-0002	I-72 (WB)	IC RR					2	2									X				
074-0005	IL 10 (FAP 721)	MADDEN CREEK									2	P6	2-701201 (1 EB; 1 WB) 1/2 - WD 1 STRUCTURE		0.5	1/4 DAY EB; 1/4 DAY WB	X				
074-0007	IL 10 (FAP 721)	I-72									2	P8	2-701201 (1 EB; 1 WB) 1/2 - WD 1 STRUCTURE		0.5	1/4 DAY EB; 1/4 DAY WB	X				
074-0013	IL 48(FAP 760)	CREEK									2	P12	2-701201 (1 NB; 1 SB) 1 - WD 2 STRUCTURES INCLUDING SN 0740081		1	1/2 DAY NB; 1/2 DAY SB	X				
074-0015	IL 48(FAP 760)	CREEK									2	P13	2-701201 (1 NB; 1 SB) 1 - WD 3 STRUCTURES INCLUDING SN 0740082		1	1/2 DAY NB; 1/2 DAY SB	X				
074-0016	IL 48(FAP 760)	CREEK									INCL.							X			
074-0021	FAS 538(BRIDGE ST)	SANGAMON RIVER									2	P19	2-701201 (1 EB; 1 WB) 1 - WD 1 STRUCTURE INCLUDING MEDIAN & RAMPS		1	1/2 DAY EB; 1/2 DAY WB		X			
074-0030	IL 105(FAP 741)	CREEK									2	P23	2-701201 (1 NB; 1 SB) 1 - WD 1 STRUCTURE		1	1/2 DAY SB ; 1/2 DAY NB	X				
074-0035	TR 87	I-72										1	P18	1-70200000 1/2 - WD 1 STRUCTURE		0.5	1/2 DAY CLOSURE	X			
074-0036	FAS 1532 (TR 154)	I-72										1	P9	1-70200000 1/2 - WD 1 STRUCTURE		0.5	1/2 DAY CLOSURE	X			
074-0040	TR 80	I-74										1	P1	1-70200000 1/2 - WD 1 STRUCTURE		0.5	1/2 DAY CLOSURE	X			
074-0041	TR 96	I-74										1	P2	1-70200000 1/2 - WD 1 STRUCTURE		0.5	1/2 DAY CLOSURE	X			
074-0044	FAS 495	I-74									2	P3	2-701201 (1 NB; 1 SB) 1 - WD 1 STRUCTURE INCLUDING MEDIAN & RAMPS		1	1/2 DAY NB; 1/2 DAY SB	X				
074-0055	IL 48 (FAP 760)	I-72									2	P14	2-701201 (1 NB; 1 SB) 1 - WD 1 STRUCTURE INCLUDING MEDIAN & RAMPS		1	1/2 DAY NB; 1/2 DAY SB	X				
074-0063	I-72 (EB)	WILDCAT CREEK					2	2				P22	4 - 701400 SET-UPS (2 DL; 2 PL) 4 - 701406 SET-UPS (2 DL; 2 PL) 2 - WD'S (1 DL; 1 PL) 2 STRUCTURES	2 - CMS (1 EB; 1 WB); 7 CALENDAR DAYS PRIOR; 6 WORKING DAYS; 13 DAYS EACH DIRECTION; TOTAL 26 CALENDAR DAYS; 6 PIATT COUNTY STRUCTURES ON FAI-72	2	1 DAY DRIVING LANES EB & WB; 1 DAY PASSING LANES EB & WB	X				
074-0064	I-72 (WB)	WILDCAT CREEK					2	2													X
074-0067	I-72 (EB)	SANGAMON RIVER					2	2				P10	4 - 701400 SET-UPS (2 DL; 2 PL) 4 - 701406 SET-UPS (2 DL; 2 PL) 2 - WD'S (1 DL; 1 PL) 2 STRUCTURES		2	1 DAY DRIVING LANES EB & WB; 1 DAY PASSING LANES EB & WB		X			
074-0068	I-72 (WB)	SANGAMON RIVER					2	2													
074-0076	IL 10(FAP 721)	SANGAMON RIVER									2	P7	2-701201 (1 EB; 1 WB) 1/2 - WD 1 STRUCTURE		0.5	1/4 DAY EB; 1/4 DAY WB	X				
074-0079	IL 105(FAP 741)	CREEK									2	P21	2-701201 (1 EB; 1 WB) 1/2 - WD 1 STRUCTURE		0.5	1/4 DAY EB ; 1/4 DAY WB	X				
074-0080	IL 105(FAP 741)	STREAM									2	P20	2-701201 (1 EB; 1 WB) 1/2 - WD 1 STRUCTURE		0.5	1/4 DAY EB ; 1/4 DAY WB	X				
074-0081	IL 48(FAP 760)	STREAM										INCL.	SEE SN 0740013		INCL.	INCL.	X				
074-0082	IL 48(FAP 760)	FRIENDS CREEK DITCH										INCL.	SEE SN 0740016		INCL.	INCL.	X				
074-0084	FAS 1517(US 150)	MADDEN CREEK									2	P5	2-701201 (1 EB; 1 WB) 1/2 - WD 1 STRUCTURE		0.5	1/4 DAY EB; 1/4 DAY WB	X				
074-0086	US 150 (FAS 1517)	N & W RR	NSRR	479 064 M	131.86						2	P4	2-701201 (1 EB; 1 WB) 1/2 - WD 1 STRUCTURE		0.5	1/4 DAY EB; 1/4 DAY WB	X				
074-0087	FAS 1517 (US 150)	S BRANCH SALT CREEK									2	P11	2-701201 (1 EB; 1 WB) 1/2 - WD 1 STRUCTURE		0.5	1/4 DAY EB; 1/4 DAY WB	X				
074-2003	FAP 758( IL 32)	STREAM									2	P16	2-701201 (1 NB; 1 SB) 1/2 - WD 1 STRUCTURE		0.5	1/4 DAY SB ; 1/4 DAY NB	X				
074-3171	FAP 760 (CH 17)	SANGAMON RIVER									2	P15	2-701201 (1 NB; 1 SB) 1/2 - WD 1 STRUCTURE		0.5	1/4 DAY SB ; 1/4 DAY NB	X				

TOTAL TC&P SET-UPS; LOCATIONS; CMS CALENDAR DAYS; ESTIMATED WORKING DAYS:	12	12	0	32	4
---	----	----	---	----	---

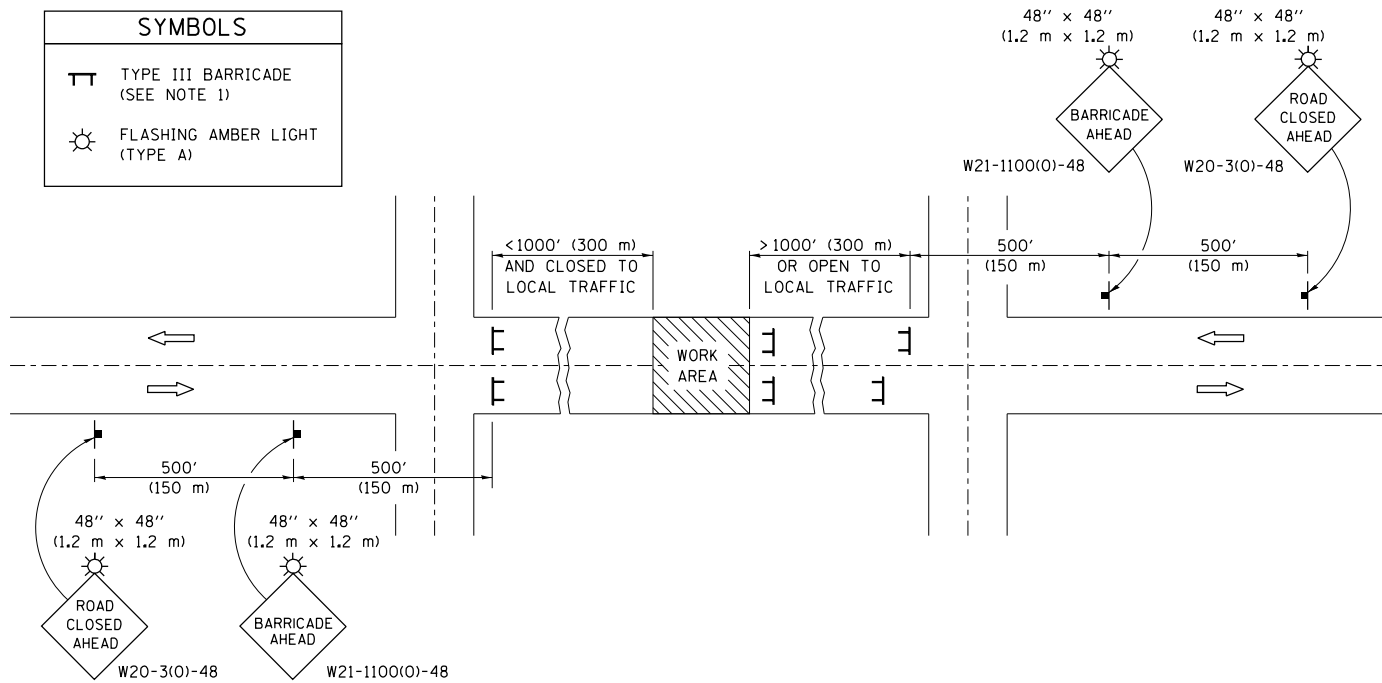
19
----

•FY2014 BRIDGE DECK SEALING  
•DOUGLAS, EDGAR, & PIATT COUNTIES

# ROAD CLOSURE

# SIDEROAD / STREET CLOSURE

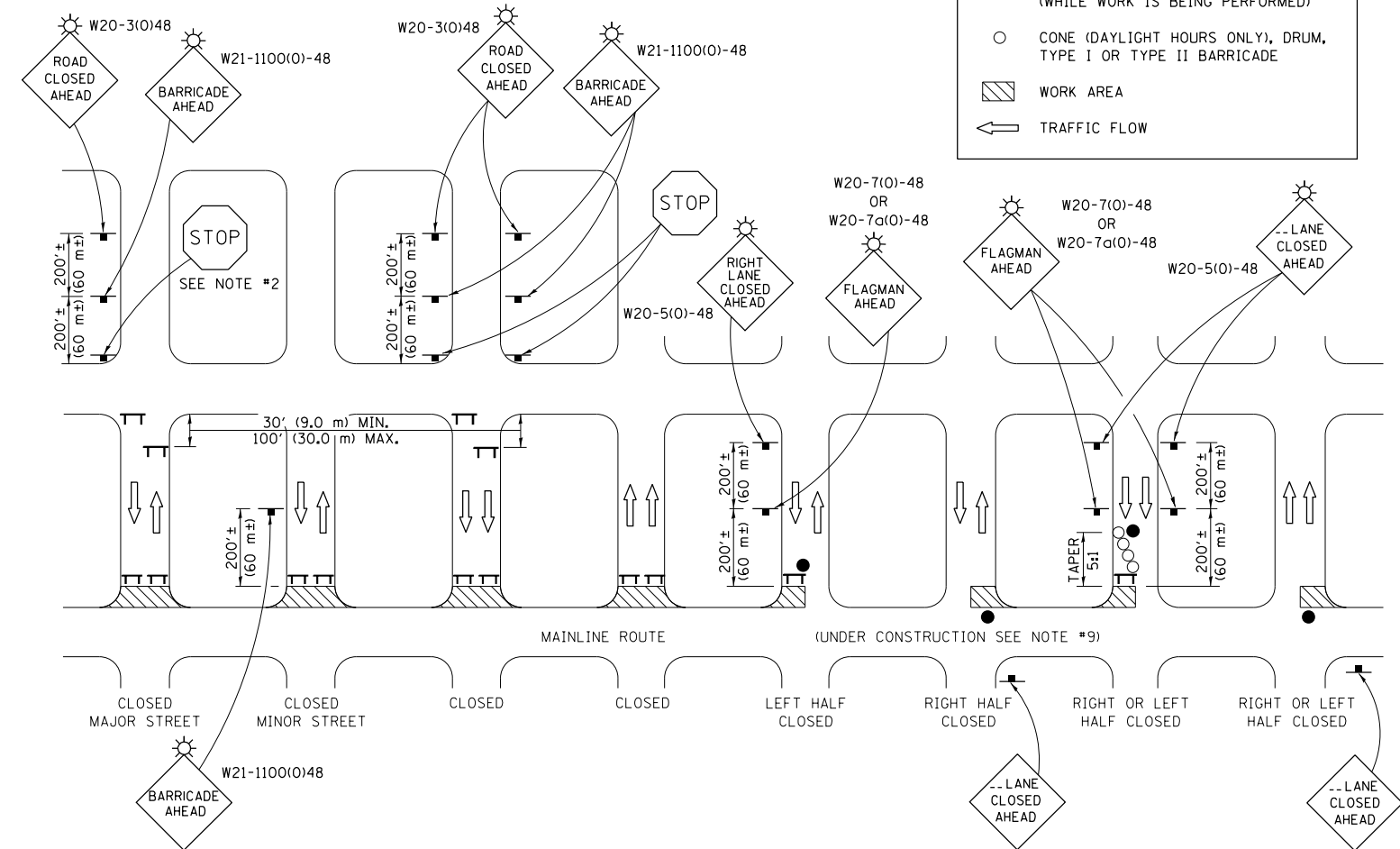
SYMBOLS	
	TYPE III BARRICADE (SEE NOTE 1)
	FLASHING AMBER LIGHT (TYPE A)



## GENERAL NOTES

- TYPE III BARRICADES SHALL BE AS SHOWN ON STANDARD 701901 "TYPICAL APPLICATIONS OF TYPE III BARRICADES CLOSING A ROAD". EACH TYPE III BARRICADE SHALL HAVE TWO FLASHING AMBER LIGHTS MOUNTED ABOVE IT.
- IF THE ROAD IS OPEN TO LOCAL TRAFFIC OR EXCEEDS 1000' (300 m), ANOTHER SET OF TYPE III BARRICADES, EQUIPPED AS IN NOTE 1 ABOVE, SHALL BE PLACED AT EACH END OF THE WORK AREA.
- WHEN A STOP CONDITION EXISTS, NO SIGNS ARE REQUIRED IN ADVANCE OF THE "STOP" SIGN WHEN THE ROAD IS CLOSED WITHIN 100' (30 m) OF THE INTERSECTION.
- STANDARD 701901 SHALL APPLY FOR THE PLACEMENT & DESIGN OF TYPE III BARRICADES.
- IF A TYPE III BARRICADE WITH AN ATTACHED SIGN PANEL WHICH MEETS NCHRP 350 IS NOT AVAILABLE, THE SIGNS MAY BE MOUNTED ON AN NCHRP 350 TEMPORARY SIGN SUPPORT DIRECTLY IN FRONT OF THE BARRICADE.
- REFLECTORIZED STRIPING SHALL APPEAR ON BOTH SIDES OF THE TYPE III BARRICADES IF ROAD IS OPEN TO LOCAL TRAFFIC.
- ALL SIGNS SHALL BE POST MOUNTED IF THE CLOSURE TIME EXCEEDS FOUR DAYS.
- A MINIMUM OF TWO FLASHING LIGHTS SHALL BE USED AT NIGHT ON EACH APPROACH IN ADVANCE OF THE WORK AREA. FLASHING LIGHTS SHALL BE INSTALLED ABOVE THE FIRST TWO SIGNS IN THE SERIES.
- LONGITUDINAL DIMENSIONS MAY BE ADJUSTED SLIGHTLY TO FIT FIELD CONDITIONS.
- FORMS BT. 725 AND BT. 726 ARE REQUIRED.
- WHEN A SIDEROAD INTERSECTS THE HIGHWAY ON WHICH WORK IS BEING PERFORMED, ADDITIONAL TRAFFIC DEVICES SHALL BE ERECTED AND PROVIDED AS DIRECTED BY THE ENGINEER.
- AN ADDITIONAL SIGN MAY BE REQUIRED AT A MAJOR INTERSECTING ROAD IN ADVANCE OF THE CLOSURE. THE ADDITIONAL SIGN SHALL GIVE THE DISTANCE TO THE BARRICADE IN MILES OR FRACTIONS OF A MILE.

SYMBOLS	
	TYPE III BARRICADE (SEE NOTE)
	FLASHING LIGHT
	FLAGGER WITH TRAFFIC CONTROL SIGN (WHILE WORK IS BEING PERFORMED)
	CONE (DAYLIGHT HOURS ONLY), DRUM, TYPE I OR TYPE II BARRICADE
	WORK AREA
	TRAFFIC FLOW



## GENERAL NOTES

- TYPE III BARRICADES SHALL BE AS SHOWN ON "TYPICAL APPLICATIONS OF TYPE III BARRICADES CLOSING A ROAD". EACH TYPE III BARRICADE SHALL HAVE TWO FLASHING AMBER LIGHTS MOUNTED ABOVE IT.
- WHERE A STOP CONDITION EXISTS, AS SHOWN ABOVE, WARNING SIGNS MAY BE OMITTED IN ADVANCE OF THE "STOP" SIGN.
- STANDARD 701901 SHALL APPLY FOR THE PLACEMENT & MANUFACTURE OF TYPE III BARRICADES.
- ALL SIGNS SHALL BE POST MOUNTED IF THE CLOSURE TIME EXCEEDS FOUR DAYS.
- ONE FLASHING LIGHT IS REQUIRED ABOVE EACH ADVANCE WARNING SIGN DURING HOURS OF DARKNESS.
- LONGITUDINAL DIMENSIONS MAY BE ADJUSTED SLIGHTLY TO FIT FIELD CONDITIONS.
- FORMS BT 725 AND BT 726 ARE REQUIRED.
- THE MAINLINE ROUTE TEMPORARY TRAFFIC CONTROL SHALL BE IN ACCORDANCE WITH THE PLANS, SPECIAL PROVISIONS AND STANDARD SPECIFICATIONS.
- ALL FLAGGERS REQUIRED AT SIDE ROADS AND ENTRANCES REMAINING OPEN TO TRAFFIC AND/OR ADDITIONAL BARRICADES REQUIRED BY THE ENGINEER TO CLOSE SIDE ROADS AND ENTRANCES WILL BE PAID FOR ACCORDING TO ARTICLE 109.04.

Note: All dimensions are in INCHES (millimeters) unless otherwise shown.  
 •FY2014 BRIDGE DECK SEALING  
 •DOUGLAS, EDGAR, & PIATT COUNTIES

## DISTRICT 5 DETAIL NO. 7020000

FILE NAME =	USER NAME = ppersonbr	DESIGNED -	REVISED - 11/06
et:\pw\work\p\pidot\personbr\d0312248\0570918-sht-details.dgn		DRAWN -	REVISED - 12/07
		CHECKED -	REVISED - 09/09 - KJT
		DATE -	REVISED -

STATE OF ILLINOIS  
DEPARTMENT OF TRANSPORTATION

TRAFFIC CONTROL & PROTECTION DEVICES  
(ROAD & SIDEROAD/STREET CLOSURES)

SCALE: SHEET NO. 1 OF 1 SHEETS STA. TO STA.

F.A. RTE.	SECTION	COUNTY	TOTAL SHEETS	SHEET NO.
VAR	.	..	21	21
CONTRACT NO. 70918				
FED. ROAD DIST. NO. ILLINOIS FED. AID PROJECT				