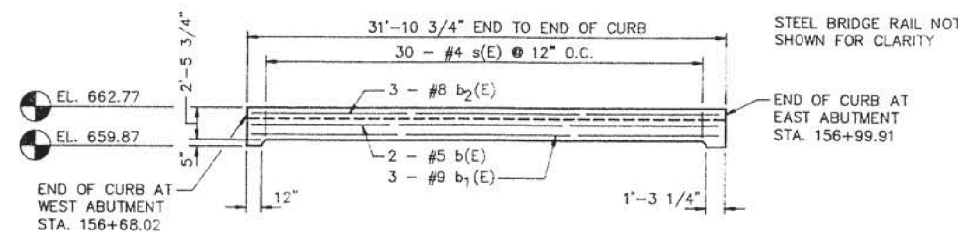
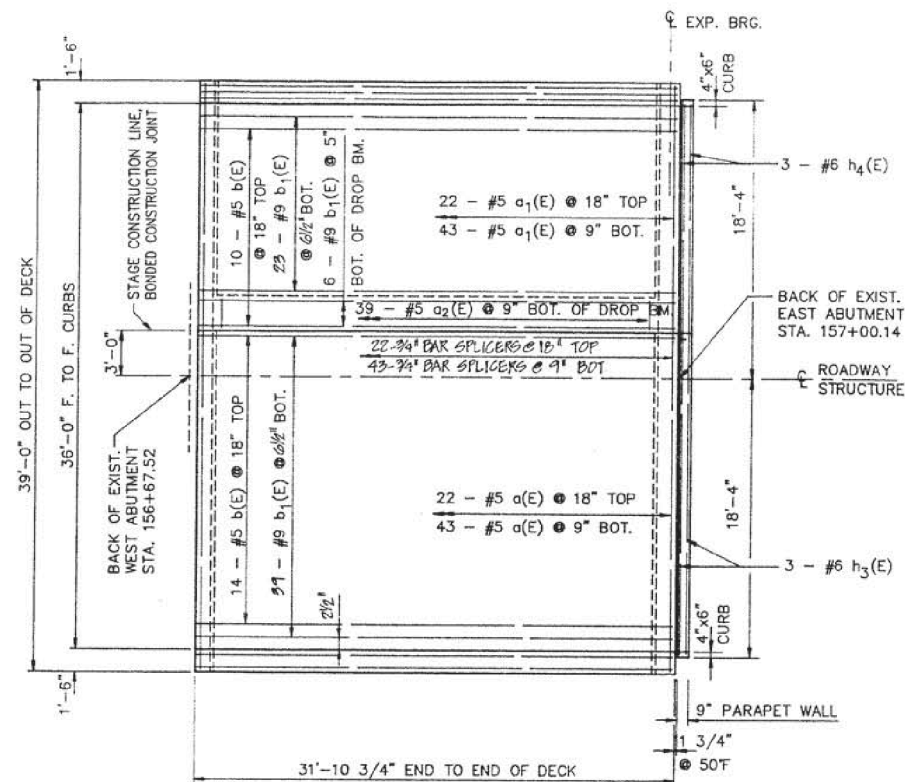


F.A.P. RTE.	SECTION	COUNTY	TOTAL SHEETS	SHEET NO.
79	143 BR-3	DOUGLAS	19	13
F.H.W.A. REG.	ILLINOIS	PROJECT		



ELEVATION OF CURB BEAM
(DIMENSIONS • OUTSIDE EDGE)



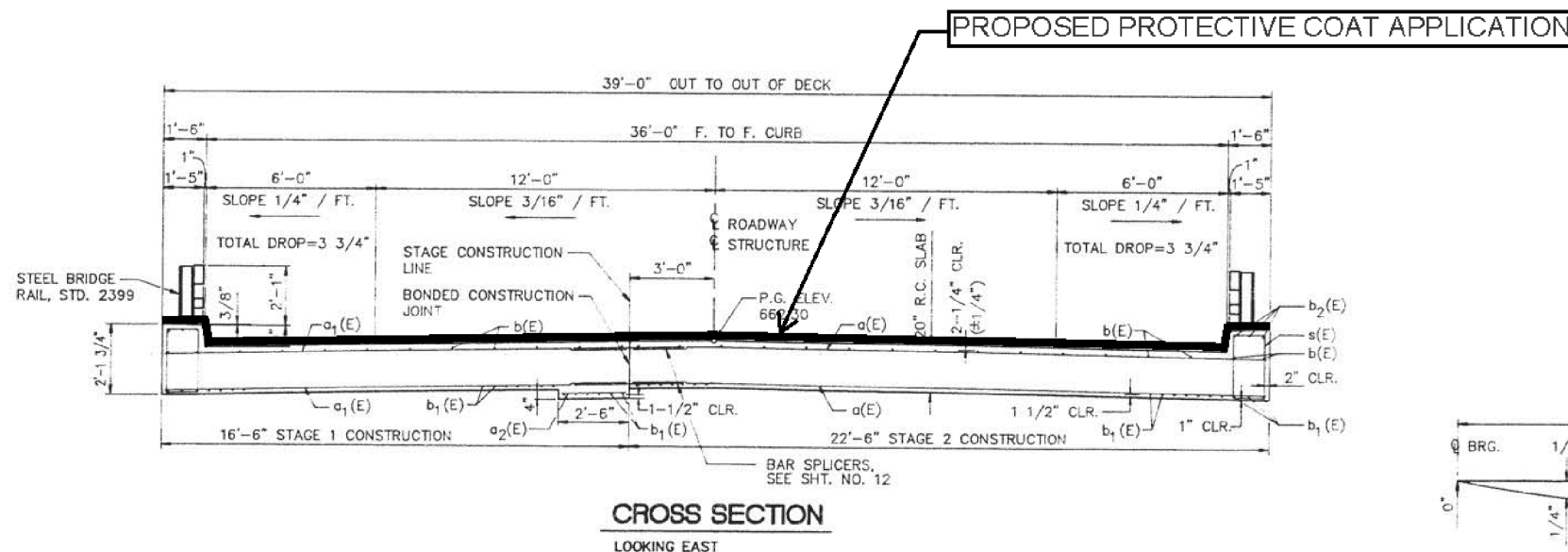
PLAN

BILL OF MATERIALS SUPERSTRUCTURE

BAR	SIZE	NO. REQ'D	LENGTH	SHAPE
a(E)	#5	67	22'-2"	—
a1(E)	#5	67	16'-2"	—
a2(E)	#5	39	2'-2"	—
a3(E)	#6	6	22'-2"	—
a4(E)	#6	6	16'-2"	—
b(E)	#5	28	31'-7"	—
b1(E)	#9	74	31'-7"	—
b2(E)	#8	6	31'-7"	—
h3(E)	#6	3	21'-0"	—
h4(E)	#6	3	15'-0"	—
s(E)	#4	60	6'-5"	□
s1(E)	#4	42	6'-1"	□
s2(E)	#4	42	5'-2"	□

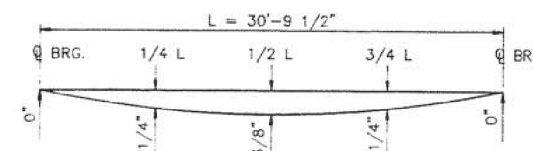
ITEM	UNIT	QUANTITY
PREFORMED JOINT SEAL 2-1/2"	LIN. FT.	39
CLASS "X" CONCRETE SUPERSTRUCTURE	CU. YD.	84.0
PROTECTIVE COAT	SQ. YD.	22
ELASTOMERIC BEARING ASSEMBLY TYPE I	EACH	7
FURNISHING AND ERECTING STRUCTURAL STEEL	POUND	1822
REINFORCEMENT BARS, EPOXY COATED	POUND	13,220

REINFORCEMENT BARS DESIGNATED (E) SHALL BE EPOXY COATED. SEE SHT. NO. 14 FOR BAR BENDING DETAILS.
SEE SHT. NO. 17 FOR ADDITIONAL PARAPET WALL DETAILS.



CROSS SECTION
LOOKING EAST

TYPICAL SECTION; TWO-LANE TWO-WAY WITH CURB



DEAD LOAD DEFLECTION DIAGRAM

SUPERSTRUCTURE

U.S. 36 over Dry Fork Creek
F.A.P. RTE. 79 Section 143 BR-3
Douglas County
Sta. 156+84
Structure Number 021-0017

Drawn **EWING**
Date 5/30/90
REV. 8/90
Project No. 16189002

UPCHURCH AND ASSOCIATES
engineers architects surveyors
MATTOON, IL. 235-3177

REV 10-15-90 BY HLC CHANGED REINFORCEMENT BARS, EPOXY COATED FROM 13,268 TO 13,220 POUNDS

•FY2014 BRIDGE DECK SEALING
•DOUGLAS, EDGAR, & PIATT COUNTIES

FILE NAME =	USER NAME = ppersonbr	DESIGNED - TJB	REVISED -
et:\pw\work\p\pidot\ppersonbr\d0312248\0570918-sht-Typical.dgn		DRAWN - DFJ	REVISED -
PLOT SCALE = 40.0000' / in.		CHECKED -	REVISED -
PLOT DATE = 11/21/2013		DATE - 08/15/12	REVISED -

STATE OF ILLINOIS
DEPARTMENT OF TRANSPORTATION

TYPICAL SECTION;
2 LANE 2 WAY HIGHWAY WITH CURB

SCALE: NONE SHEET NO. 1 OF 1 SHEETS STA. TO STA.

F.A.I. RTE.	SECTION	COUNTY	TOTAL SHEETS	SHEET NO.
VAR	.	**	21	10
			CONTRACT NO. 70918	
ILLINOIS FED. AID PROJECT				