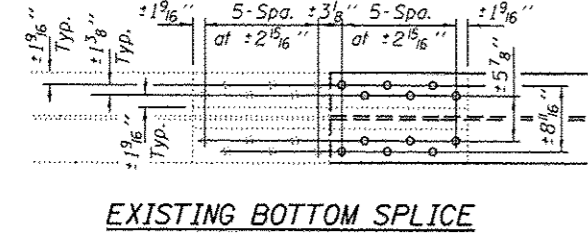
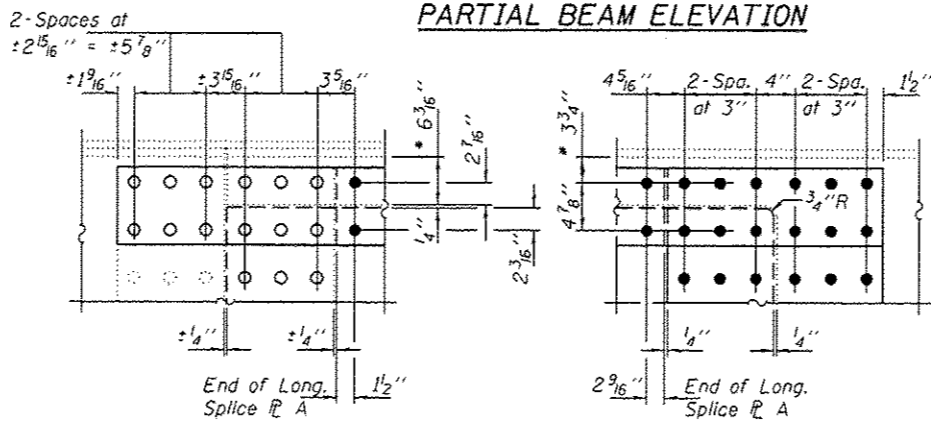


**PARTIAL BEAM ELEVATION**



**EXISTING BOTTOM SPLICE**

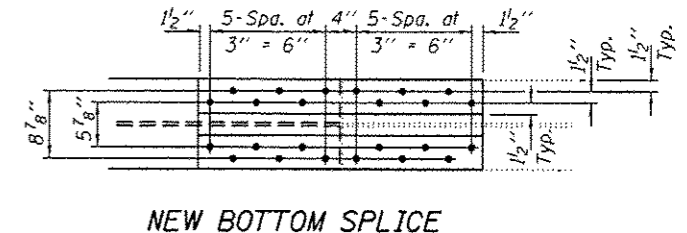


**DETAIL A**

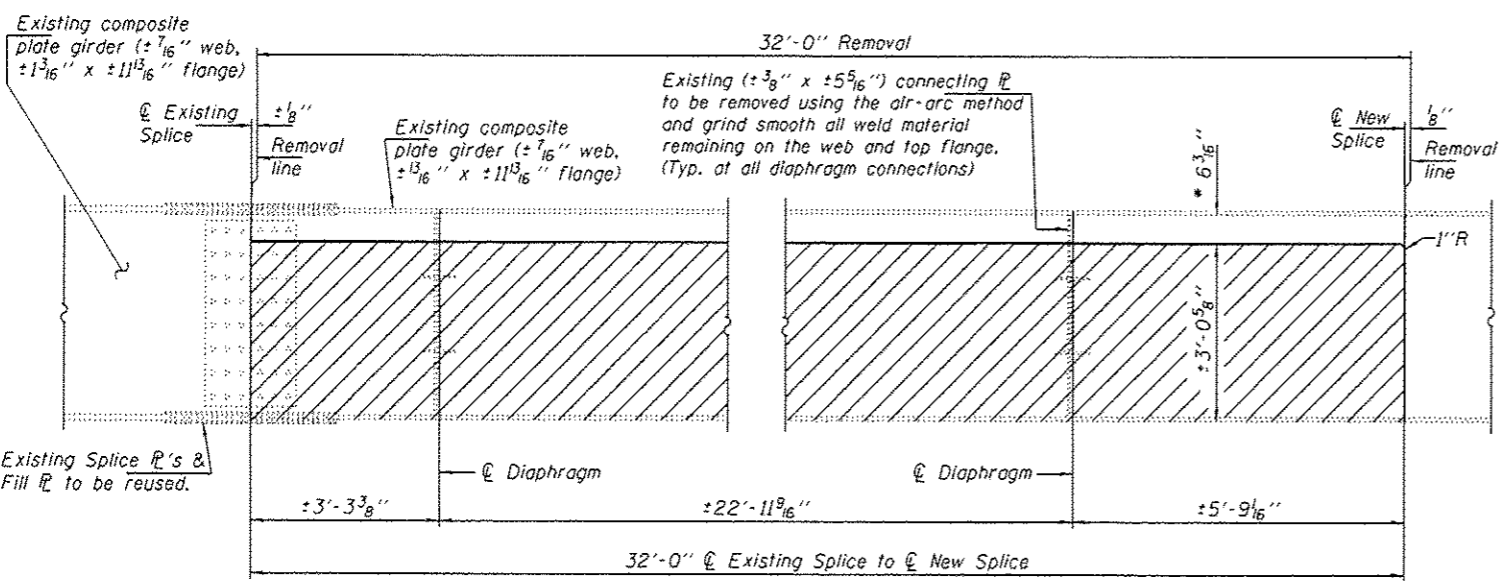
**DETAIL B**

**BOLT HOLE LEGEND**

- Existing Holes
- Field Drill holes in new steel using holes in existing steel as template.
- Field Drill holes in existing steel using holes in new steel as template.

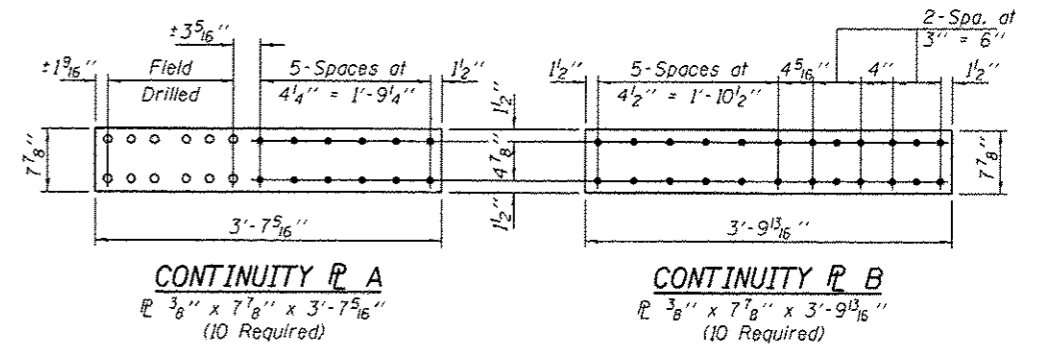


**NEW BOTTOM SPLICE**



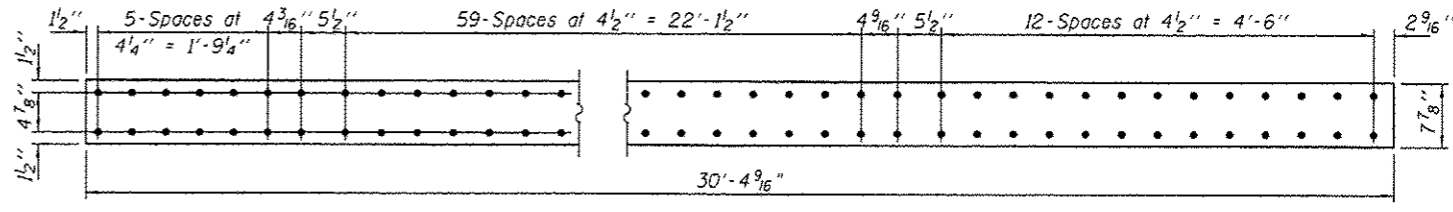
**BEAM SEGMENT REMOVAL DETAIL**

Hatched areas indicate removal. All cut edges are to be ground smooth and be free of any nicks, gouges or irregularities.



**CONTINUITY PLATE A**

**CONTINUITY PLATE B**



**LONGITUDINAL SPLICE PLATE A**

PLATE 3/8\"/>

\* Measured from bottom of top flange.

DESIGNED GGE	EXAMINED <i>Timothy A. ...</i>	DATE NOVEMBER 18, 2013	STATE OF ILLINOIS DEPARTMENT OF TRANSPORTATION		REPAIR DETAILS SN 072-0179		F.A.I. RTE.	SECTION	COUNTY	TOTAL SHEETS	SHEET NO.
CHECKED ATH	PASSED <i>Kyle M. Steffen</i>	REVISED					14	04 NCHD 2014-1	PEORIA	8	8
DRAWN Kyle M. Steffen	ACTING ENGINEER OF BRIDGES AND STRUCTURES	REVISED	SHEET NO. 3 OF 3 SHEETS		CONTRACT NO. 68864		ILLINOIS FED. AID PROJECT				
CHECKED GGE ATH	ACTING ENGINEER OF STRUCTURAL SERVICES	REVISED									