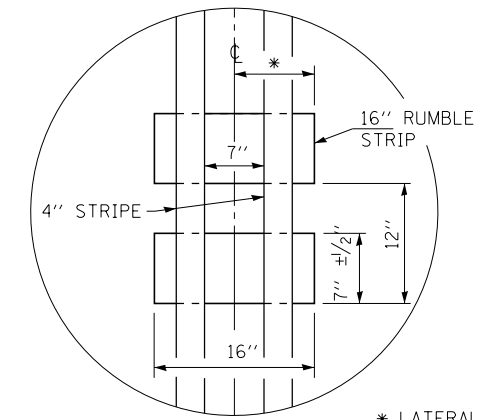
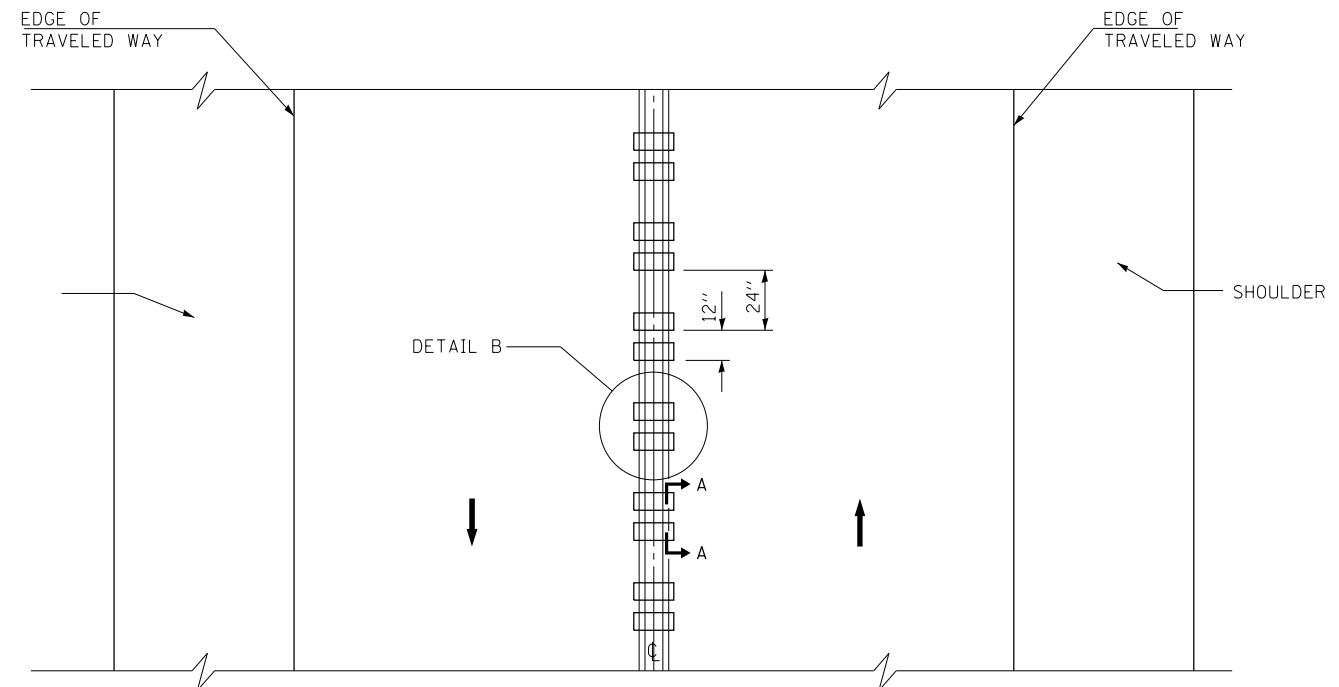


SECTION A-A



DETAIL B

* LATERAL DEVIATION SHALL NOT EXCEED ONE INCH IN 100 FEET.



TWO-WAY ROAD

CENTERLINE RUMBLE STRIPS

GENERAL NOTES

SEE DETAILS FOR STRIPING.

RUMBLE STRIPS SHALL NOT BE PLACED ON BRIDGES.

ALL RUMBLE STRIPS SHALL BE MILLED.

CENTERLINE RUMBLE STRIPS SHALL BE CONTINUOUS THROUGH CONNECTIONS OF SIDEROADS WITH NO LEFT TURN LANES.

DISCONTINUE CENTERLINE RUMBLE STRIPS THROUGH THE LIMITS OF ALL LEFT TURN LANES, INCLUDING ANY LANE TAPER SECTIONS.

WHERE USED, ADJUST SPACING OF RAISED REFLECTIVE PAVEMENT MARKERS TO FALL IN WIDER GAP BETWEEN RUMBLE STRIPS.

CENTERLINE RUMBLE STRIPS SHALL BE PLACED AT LOCATIONS SHOWN ON THE PLANS.

FILE NAME =	USER NAME = carpenterdj	DESIGNED -	REVISED -
ei:\pw_work\p\id\carpenterdj\d0366282\0366D36-sh1-details.dgn		DRAWN -	REVISED -
	PLOT SCALE = 100.0000' / in.	CHECKED -	REVISED -
	PLOT DATE = 12/6/2013	DATE -	REVISED -

STATE OF ILLINOIS
DEPARTMENT OF TRANSPORTATION

DETAILS

SCALE: SHEET OF SHEETS STA. TO STA.

F.A.P. RTE.	SECTION	COUNTY	TOTAL SHEETS	SHEET NO.
17	(124)I & RS-3	DEKALB	26	26
CONTRACT NO. 66D36				
ILLINOIS FED. AID PROJECT				