

INDEX OF SHEETS

1. COVER SHEET
2. GENERAL NOTES
3. SUMMARY OF QUANTITIES
4. TYPICAL SECTIONS
5. TRAFFIC CONTROL AND PROTECTION, STANDARD 701400 (SPECIAL)
6. DETAILS
7. MAINLINE SCHEDULE

STANDARDS

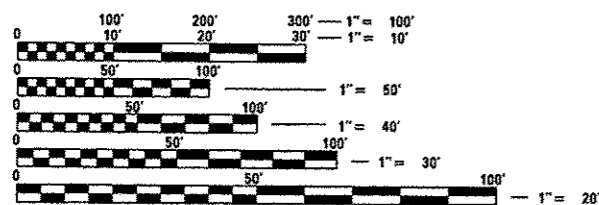
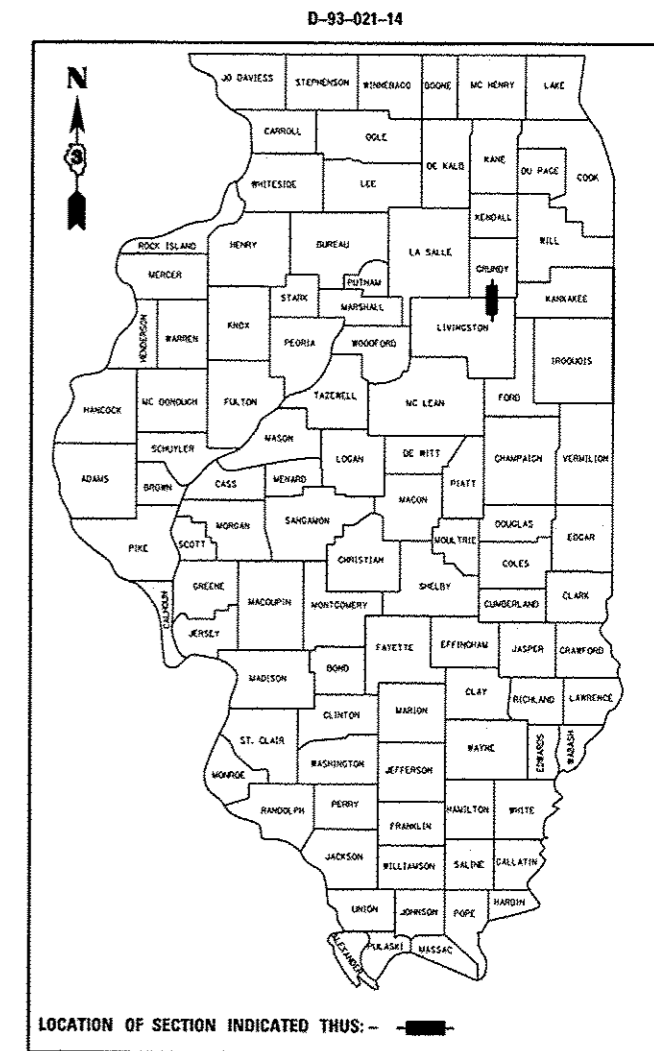
000001-06	STANDARD SYMBOLS, ABBREVIATIONS AND PATTERNS
001006	DECIMAL OF AN INCH AND OF A FOOT
642001-02	SHOULDER RUMBLE STRIPS, 16 INCH
701101-04	OFF-ROAD OPERATIONS MULTILANE, 15' (4.5 m) TO 24' (600 mm) FROM PAVEMENT EDGE
701106-02	OFF-ROAD OPERATIONS, MULTILANE, MORE THAN 15' (4.5 m) AWAY
701401-08	LANE CLOSURE, FREEWAY/EXPRESSWAY
701411-08	LANE CLOSURE, MULTILANE, AT ENTRANCE OR EXIT RAMP FOR SPEEDS 45 MPH
701901-03	TRAFFIC CONTROL DEVICES

STATE OF ILLINOIS  
DEPARTMENT OF TRANSPORTATION  
DIVISION OF HIGHWAYS  
**PROPOSED  
HIGHWAY PLANS**

F.A.I. ROUTE 55 (I-55)  
SECTIONS (53-1, 32-3)I-4  
PROJECT: ACHSIP-0055(404)  
**HOT-MIX ASPHALT SHOULDER REPAIR  
GRUNDY & LIVINGSTON COUNTIES**

C-93-027-14

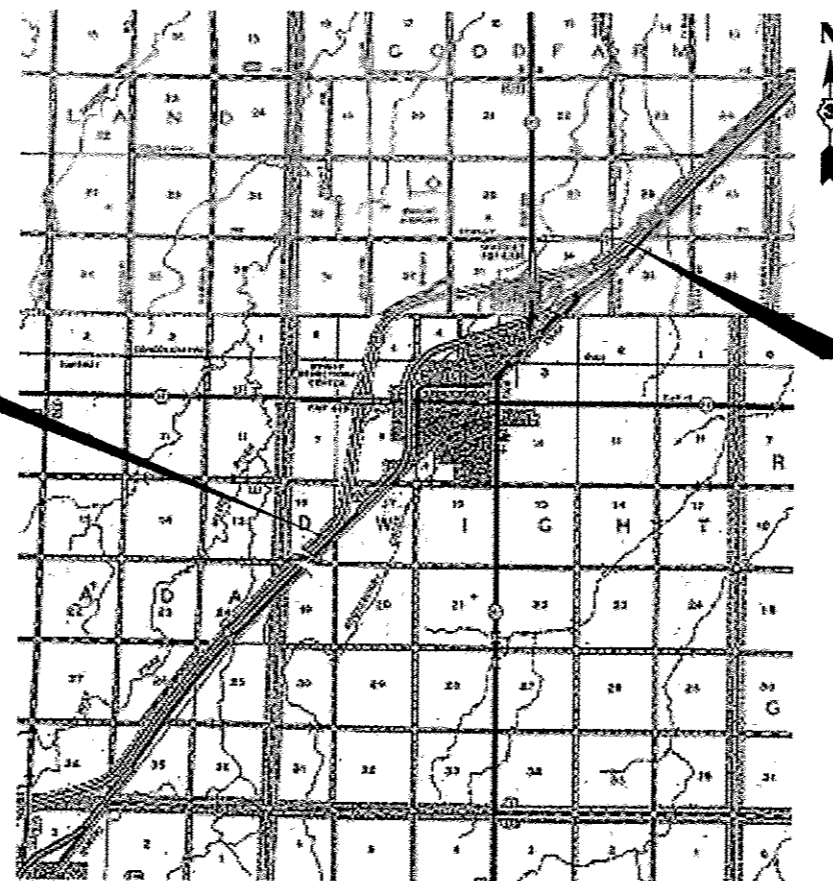
F.A.I. RTE.	SECTION	COUNTY	TOTAL SHEETS	SHEET NO.
55	(53-1, 32-3)I-4	VARIOUS	7	1
		ILLINOIS	CONTRACT NO. 66D33	



FULL SIZE PLANS HAVE BEEN PREPARED USING STANDARD ENGINEERING SCALES. REDUCED SIZED PLANS WILL NOT CONFORM TO STANDARD SCALES. IN MAKING MEASUREMENTS ON REDUCED PLANS, THE ABOVE SCALES MAY BE USED.

J.U.L.I.E.  
JOINT UTILITY LOCATION INFORMATION FOR EXCAVATION  
1-800-892-0123  
OR 811

DISTRICT 3 NO. (815) 434-6131  
PROJECT ENGINEER: JOE KANNEL, P.E.  
UNIT CHIEF: SCOTT A. FERGUSON  
CONTRACT NO. 66D33



**BEGIN PROJECT**  
STA. 655 + 49.51 BK =  
STA. 150 + 05.99 AH

**END PROJECT**  
STA. 460 + 00.00  
1.2 MI NORTH OF IL 47

GROSS LENGTH = 30,994.01 FT. = 5.87 MILES  
NET LENGTH = 30,994.01 FT. = 5.87 MILES

LOCATION MAP  
NOT TO SCALE

**FUNCTIONAL CLASSIFICATION**  
**RURAL INTERSTATE**  
2013 ADT = 19200  
P.V. = 73.17% M.U. = 23.44% S.U. = 3.39%

STATE OF ILLINOIS  
DEPARTMENT OF TRANSPORTATION  
DIVISION OF HIGHWAYS

SUBMITTED: *Paul A. Coates* 12-6-13  
DEPUTY DIRECTOR OF HIGHWAYS, REGION ENGINEER

*John D. Baranzelli* 1-24-14  
ENGINEER OF DESIGN AND ENVIRONMENT

*Omer Osman* 1-24-14  
DIRECTOR OF HIGHWAYS, CHIEF ENGINEER

**PRINTED BY THE AUTHORITY  
OF THE STATE OF ILLINOIS**