

F.A.I. RTE.	SECTION	COUNTY	TOTAL SHEETS	SHEET NO.
57	(38-5VB)BP	IROQUOIS	9	1
		ILLINOIS	CONTRACT NO. 66D10	

**STATE OF ILLINOIS
DEPARTMENT OF TRANSPORTATION**

DIVISION OF HIGHWAYS

**PROPOSED
HIGHWAY PLANS**

**F.A.I. ROUTE 57 (I-57)
SECTION (38-5VB)BP**

**CLEANING AND PAINTING STRUCTURAL STEEL
STRUCTURE NO.'S 038-0005 (NB) AND 038-0006 (SB)**

IROQUOIS COUNTY

C-93-110-13

INDEX OF SHEETS

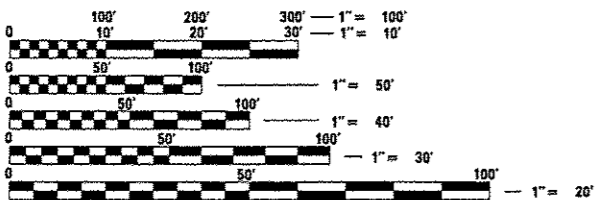
- 1 COVER SHEET
- 2 GENERAL NOTES
- 3 SUMMARY OF QUANTITIES
- 4 TYPICAL SECTIONS
- 5 TRAFFIC CONTROL AND PROTECTION STANDARD 701400 (SPECIAL)
- 6 TRAFFIC CONTROL AND PROTECTION STANDARD 701402 (SPECIAL)
- 7 TYPICAL PAVEMENT MARKINGS
- 8-9 EXISTING STRUCTURE PLANS

STANDARDS

- 000001-06 STANDARD SYMBOLS, ABBREVIATIONS AND PATTERNS
- 001006 DECIMAL OF AN INCH AND OF A FOOT
- 635011-02 REFLECTOR MARKER AND MOUNTING DETAILS
- 701101-04 OFF-ROAD OPERATIONS MULTILANE, 15' (4.5m) TO 24" (600m) FROM PAVEMENT EDGE
- 701106-02 OFF-ROAD OPERATIONS, MULTILANE, MORE THAN 15' (4.5m) AWAY
- 701426-06 LANE CLOSURE, MULTILANE INTERMITTENT OR MOVING OPERATION, FOR SPEEDS > 45 MPH
- 701901-03 TRAFFIC CONTROL DEVICES
- 704001-07 TEMPORARY CONCRETE BARRIER

PROJECT LOCATION

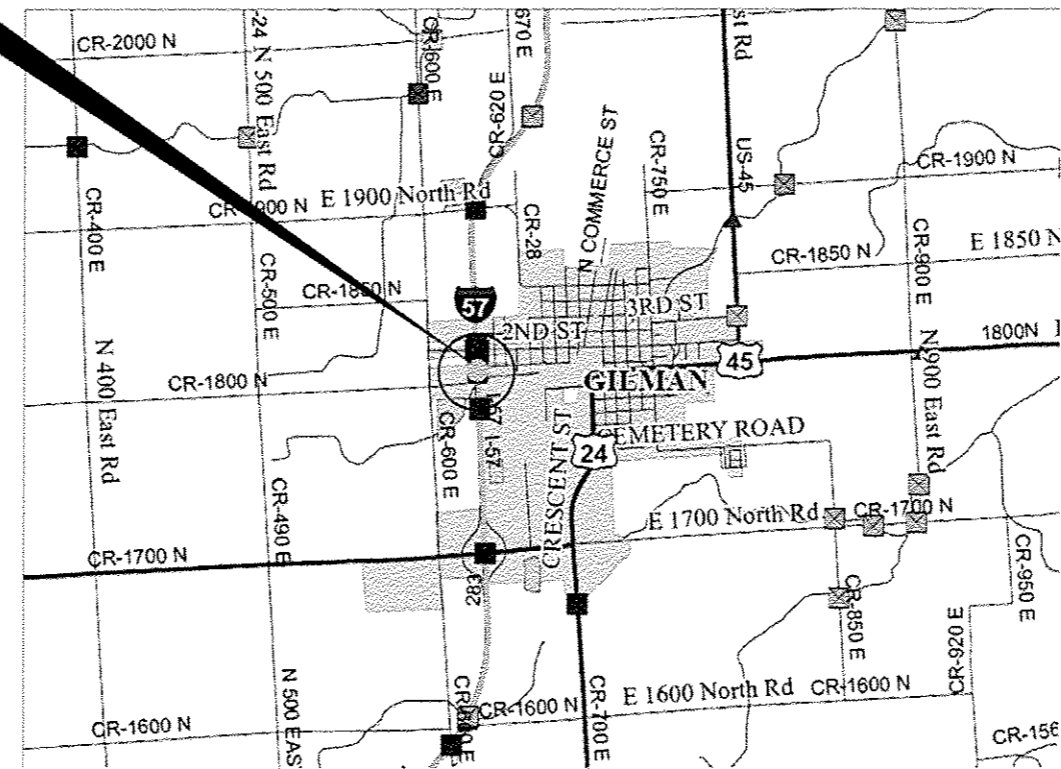
**SN: 038-0005 (NB) AND SN: 038-0006 (SB)
CARRYING FAI 57 (I-57) OVER T.P. & W. RR
STA. 592 + 77.57**



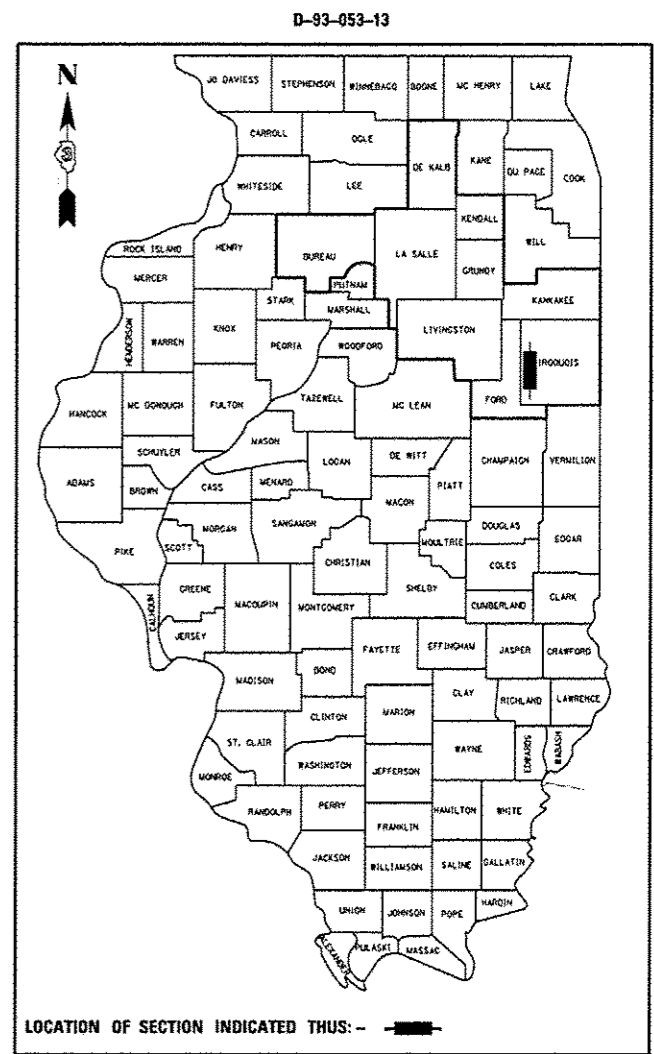
FULL SIZE PLANS HAVE BEEN PREPARED USING STANDARD ENGINEERING SCALES. REDUCED SIZED PLANS WILL NOT CONFORM TO STANDARD SCALES. IN MAKING MEASUREMENTS ON REDUCED PLANS, THE ABOVE SCALES MAY BE USED.

J.U.L.I.E.
JOINT UTILITY LOCATION INFORMATION FOR EXCAVATION
1-800-892-0123
OR 811

**DISTRICT 3 NO. (815) 434-6131
PROJECT ENGINEER: JOE KANNEL, P.E.
UNIT CHIEF: RON WOODSHANK
TOWNSHIP: DOUGLAS
CONTRACT NO. 66D10**



**LOCATION MAP NOT TO SCALE
POINT LOCATION**



FUNCTIONAL CLASSIFICATION
URBAN INTERSTATE
FAI 57 (I-57)
2011 ADT = 1550
P.V. = 89.03%
M.U. = 3.23%
S.U. = 7.74%

STATE OF ILLINOIS
DEPARTMENT OF TRANSPORTATION
DIVISION OF HIGHWAYS

SUBMITTED *Paul A. Looney* 12-9-2013
DEPUTY DIRECTOR OF HIGHWAYS, REGION ENGINEER

John D. Baranzelli, P.E. 12-24-2014
ENGINEER OF DESIGN AND ENVIRONMENT

Amer Osman, P.E. 12-24-2014
DIRECTOR OF HIGHWAYS, CHIEF ENGINEER

**PRINTED BY THE AUTHORITY
OF THE STATE OF ILLINOIS**