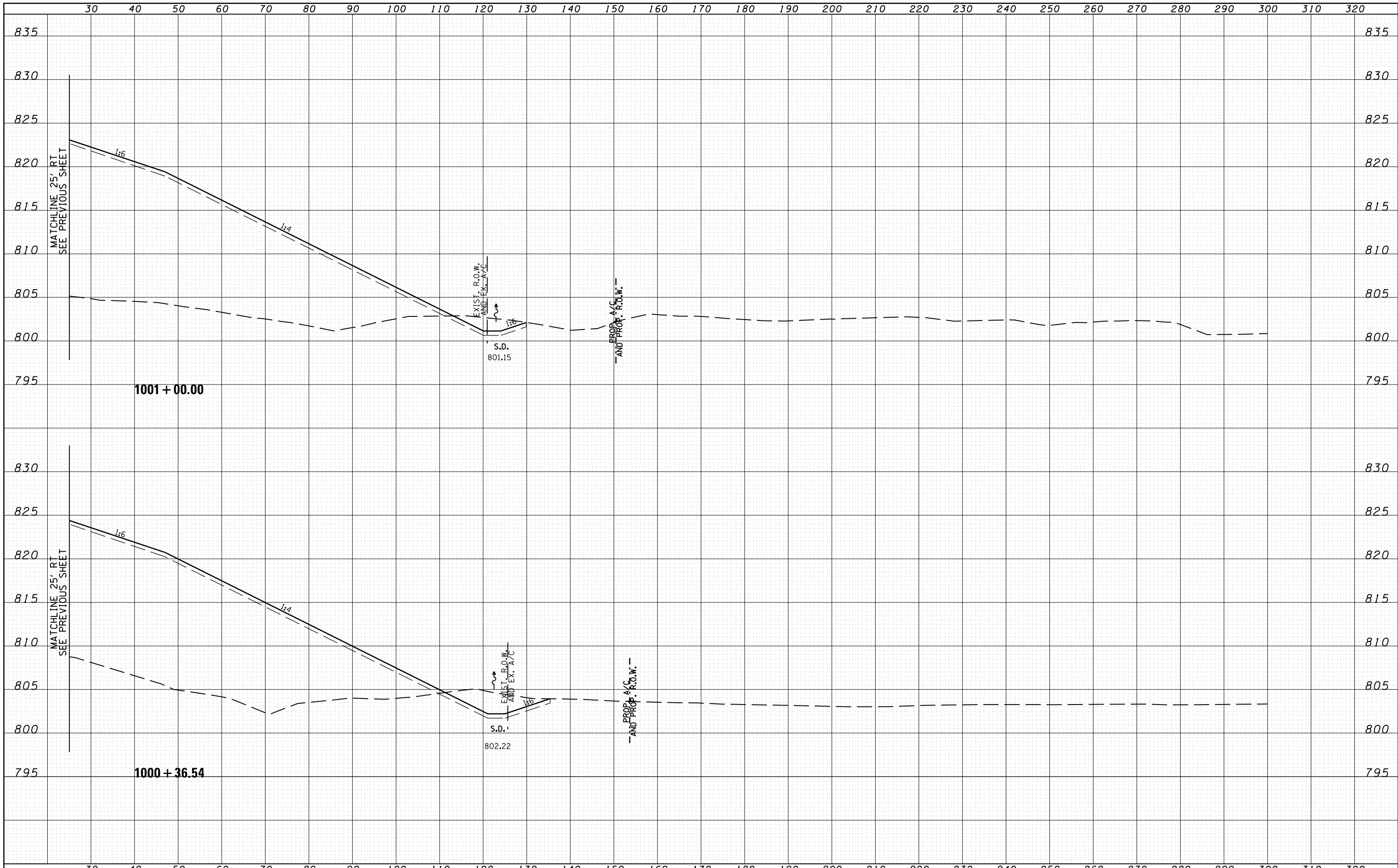


| | |
|--------------|---------------|
| BY | DATE |
| | |
| FINAL SURVEY | SURVEYED |
| NOTE BOOK | PLOTTED |
| NO. | TEMPLATE |
| | AREAS CHECKED |

| | |
|-----------------|---------------|
| BY | DATE |
| | |
| ORIGINAL SURVEY | SURVEYED |
| NOTE BOOK | PLOTTED |
| NO. | TEMPLATE |
| | AREAS CHECKED |



FILE NAME =
 c:\pw-work\pwidth\rundbladerr\d0331836\0264H70\sh-t-xssht-IL_Route_2.dgn

USER NAME =
 DESIGNED - RDT
 DRAWN - RDT
 PLOT SCALE =
 PLOT DATE

REVISIED -
 REVISIED -
 REVISIED -
 REVISIED -
 DATE - 10-05-2012

**STATE OF ILLINOIS
 DEPARTMENT OF TRANSPORTATION**

**ILLINOIS ROUTE 2
 CROSS SECTIONS**
 H: 1" = 10'
 SCALE: V: 1" = 5'
 SHEET NO. OF SHEETS STA. 1000+36.54 TO STA. 1001+00.00

| F.A.P. RTE. | SECTION | COUNTY | TOTAL SHEETS | SHEET NO. |
|--------------------|---------|-----------|---------------------------|-----------|
| 734 | 77R-1 | WINNEBAGO | 179 | 131 |
| CONTRACT NO. 64HT0 | | | ILLINOIS FED. AID PROJECT | |