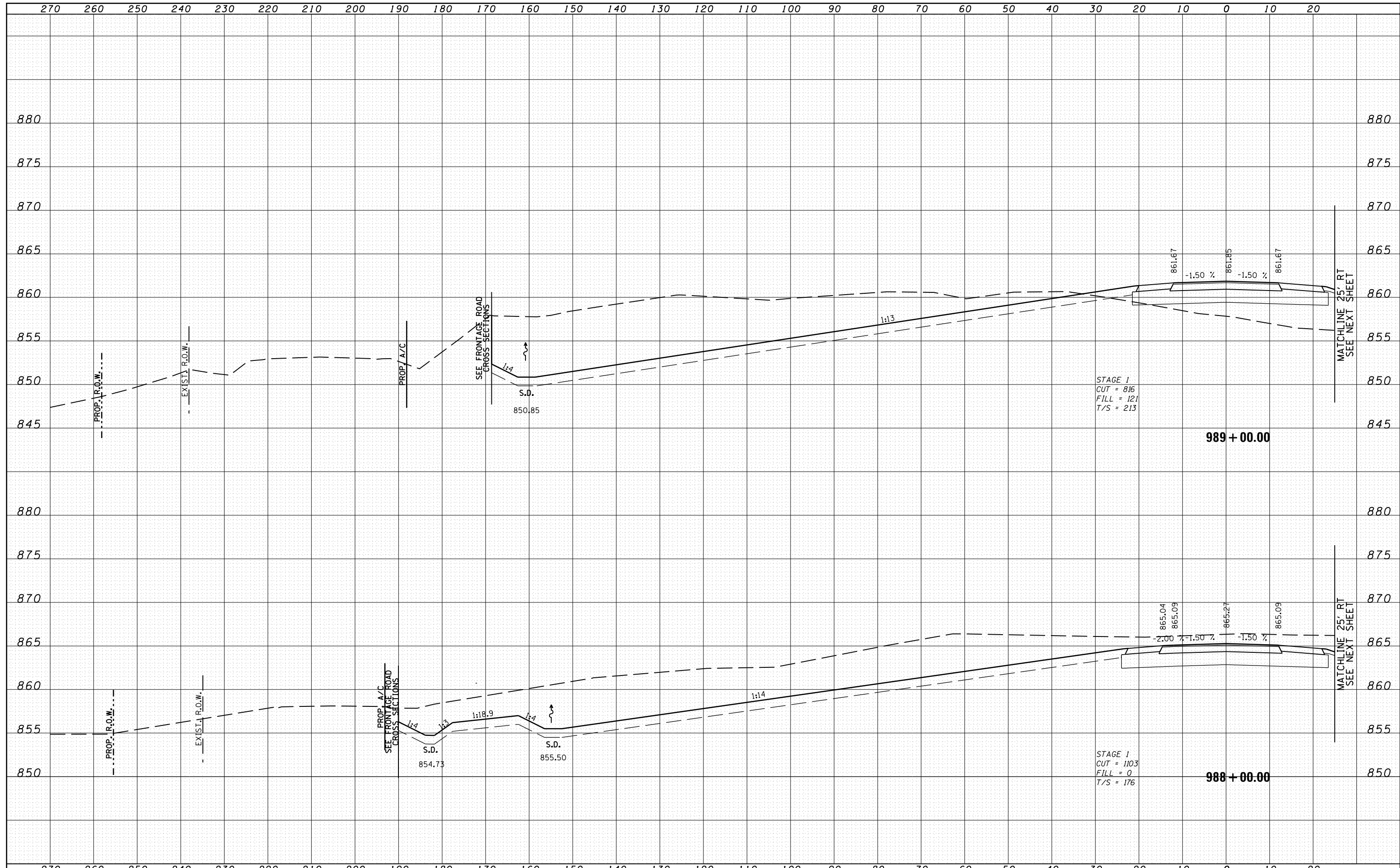


| | |
|--------------|---------------|
| DATE | |
| BY | |
| FINAL SURVEY | SURVEYED |
| NOTE BOOK | PLOTTED |
| NO. | TEMPLATE |
| | AREAS CHECKED |

| | |
|-----------------|---------------|
| DATE | |
| BY | |
| ORIGINAL SURVEY | SURVEYED |
| NOTE BOOK | PLOTTED |
| NO. | TEMPLATE |
| | AREAS CHECKED |



| | | | | | | | | | | | |
|--|-------------------|----------------|---------------------------|---|--|-------------|-----------|----------------------------------|--------------------|-----------|--|
| FILE NAME = | USER NAME = | DESIGNED - RDT | REVISED - | STATE OF ILLINOIS DEPARTMENT OF TRANSPORTATION | ILLINOIS ROUTE 2 CROSS SECTIONS | F.A.P. RTE. | SECTION | COUNTY | TOTAL SHEETS | SHEET NO. | |
| ca:\pw\work\p\dot\rundbladerr\d0331836\0264H70\sheet\ssht-IL_Route_2.dgn | | DRAWN - RDT | REVISED - | | | 734 | 77R-1 | WINNEBAGO | 179 | 116 | |
| PLOT SCALE = | CHECKED - GC | REVISED - | SCALE: V: 1" = 5' | | | SHEET NO. | OF SHEETS | STA. 988+00.00 TO STA. 989+00.00 | CONTRACT NO. 64H70 | | |
| PLOT DATE | DATE - 10-05-2012 | REVISED - | ILLINOIS FED. AID PROJECT | | | | | | | | |